

**The “First Substitute” Regatta**  
**Saturday, January 30, 2021**  
**Random Leg Sailing Instructions**  
**Channel Islands Yacht Club**

- 1. Rules:** This race will be governed by the *rules* as defined in the *Racing Rules of Sailing*. Changes to these written Sailing Instructions, if any, will be posted online by 0930hrs on the day of the event.

Once on the water, oral changes to a sailing instruction may only be made by hailing all competitors on VHF Channel 71 and receiving confirmation from each that they have heard and understood the change.

- 2. Notices to Competitors and Signals Ashore:** Notices to competitors will be available on the event website at Regatta Network (<https://www.regattanetwork.com/event/21786>). No signals will be made ashore.

**3. Schedule and Class Flags**

- a. All boats shall check in with the Race Committee (RC) on VHF channel 71 or by passing behind and hailing the RC boat prior to the starting sequence
- b. The starting system will follow *rule 26* with “rolling starts,” ie, the starting signal for one class will be warning signal for the next class
- c. The RC will signal multiple short blasts at 6min before the first start, ie, 1min before the 5-minute Warning signal, which is planned for 1055hrs
- d. The RC will signal the course number for the first starting class no later than the class warning signal. For succeeding classes the RC will signal the course number as soon as possible after the warning signal for that class, which changes Rule 27.1.
- e. The sequence of starts and class flags are described below:

1 <sup>st</sup> Start	PHRF Crewed	Numeral Pennant #1
2 <sup>nd</sup> Start	PHRF/One-Design Double-handed	Numeral Pennant #2
3 <sup>rd</sup> Start	PHRF/One-Design Single-handed	Numeral Pennant #3
4 <sup>th</sup> Start	One-design Crewed	Numeral Pennant #4

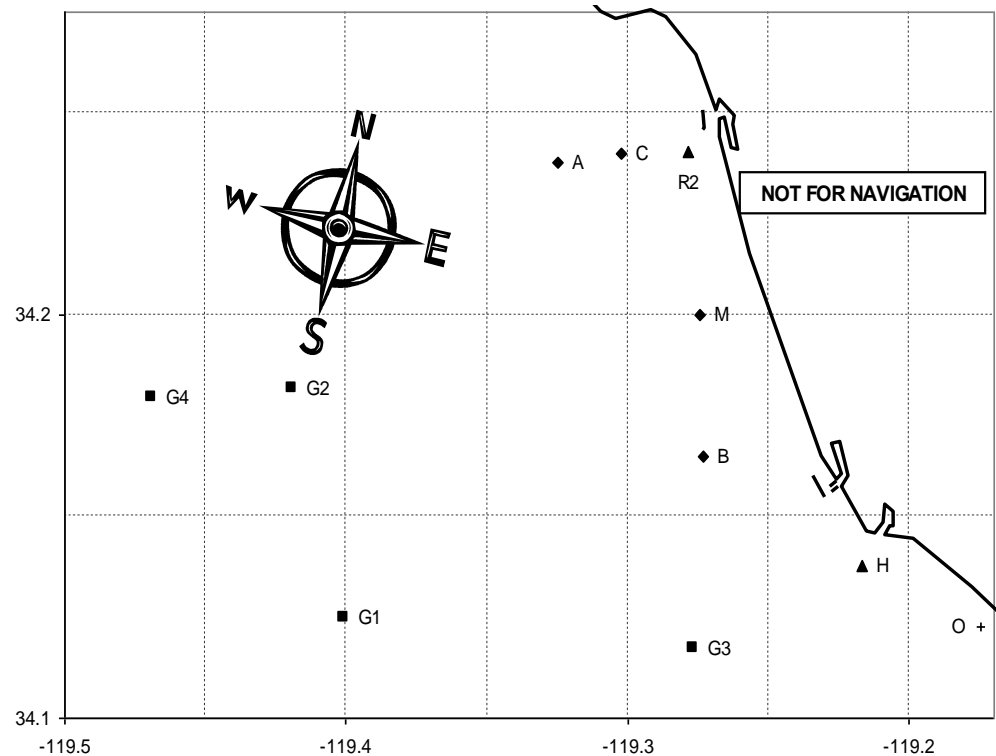
Min before 1 <sup>st</sup> Start	Visual Signal	Sound Signal	Means
6		Multiple short	1 min before 5min Warning
5	Class Flag	One	5min Warning signal
4	P, I, Z, Z with I or Black	One	Preparatory signal
1	Preparatory flag removed	One Long	One minute before Start
0	Class flag removed	One	Starting signal

- 4. Racing Area, Courses and Marks:** The racing area will be the coastal waters of Ventura County. The courses will be chosen from the CIYC Course Chart (attached), which includes course distances between 5.1 and 23.8nm. When an oil platform is a mark of the course, its associated mooring buoy(s) are also marks of the course.
- 5. Starting and Finishing Lines:** Racing will begin near the Mandalay spar buoy. The port end of the Start line will be the Mandalay spar buoy, and the starboard end will be designated by an orange flag on the RC boat. The Finish line is between Channel Markers #4 and #5, near the entrance to Channel Islands Harbor.

6. **Protests:** A *protest* about an incident observed in the racing area shall be delivered to the Race Committee within 1 hour after the last boat finishes. Protests shall be delivered to the RC within 1 hour of the finish (or early retirement) of the protesting boat. Protest forms are available online at US Sailing (<https://cdn.ussailing.org/wp-content/uploads/2018/01/US-Sailing-2017-2020-Protest-Form.pdf>) or may be completed digitally through the US Sailing *RRS* app.
7. **Scoring:** Mixed entry classes will be scored using their PHRF handicap ratings; one-design classes will be scored by their order of finish. Single- and double-handed entries will be scored among themselves, as applicable.
8. **Safety Equipment:** All boats shall carry a VHF radio with Channels 16 and 71. The RC will monitor VHF Channel 71 throughout the race. Each skipper is responsible for compliance with applicable US Sailing Safety Equipment Requirements for Nearshore.

**Channel Islands Yacht Club – Random Leg Course Chart**  
**Start: Mandalay Buoy    Finish: CI Harbor Channel Markers #4 & #5**

Course #	nm	Waypoints (see Codes below)	Approx Bearing to 1 <sup>st</sup> Mark
1	11.50	Sm Hs G3s Fc	143°T (130°M)
2	4.71	Sm Bp Fc	178°T (165°M)
3	6.91	Sm Bp Hp Fc	178°T (165°M)
4	8.54	Sm G3p Fc	181°T (168°M)
5	9.73	Sm G3p Hp Fc	181°T (168°M)
6	13.81	Sm G3s Bs Ms Fc	181°T (168°M)
7	20.07	Sm G3s G1s Fc	181°T (168°M)
8	16.66	Sm G1p Fc	234°T (221°M)
9	17.38	Sm G1p G3p Fc	234°T (221°M)
10	18.57	Sm G1p G3p Hp Fc	234°T (221°M)
11	17.06	Sm G2p Fc	261°T (248°M)
12	18.79	Sm G2p G3p Fc	261°T (248°M)
13	23.47	Sm G4p G3p Fc	263°T (250°M)
14	11.29	Sm Ap Fc	313°T (300°M)
15	11.71	Sm Ap Bp Fc	313°T (300°M)
16	10.13	Sm Cp Bp Fc	330°T (317°M)
17	13.40	Sm R2Vp G3p Fc	355°T (342°M)



Code	Marks	Approximate Location
A	Fish Sticks spar buoy	34° 14.5' N 119° 19.8' W
B	“Wes” Mark (spar buoy)	34° 09.9' N 119° 16.4' W
C	Chips spar buoy	34° 14.4' N 119° 18.2' W
H	Hueneme buoy	34° 08.3' N 119° 13.0' W
Sm	Mandalay spar buoy (Start)	34° 12.0' N 119° 16.5' W
R2	Ventura R2 whistle buoy	34° 14.4' N 119° 16.7' W
G1	Platform Gail	34° 07.5' N 119° 24.0' W
G2	Platform Gilda	34° 10.9' N 119° 25.1' W
G3	Platform Gina	34° 07.0' N 119° 16.6' W
G4	Platform Grace	34° 10.8' N 119° 28.1' W