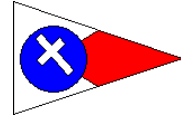


SANTA CRUZ YACHT CLUB



THREE BUOY FIASCO

FEBRUARY 13, 2021

SAILING INSTRUCTIONS

1. RULES

- 1.1. This series will be governed by the rules as defined in *The Racing Rules of Sailing (RRS)*.
- 1.2. The Class Rules of the respective classes will apply.
- 1.3. The first sentence of RRS 40 is changed so that competitors shall comply with the obligations of RRS 40 (wear a PFD) whether or not the race committee displays flag Y with one sound.
- 1.4. Boats may not have a spinnaker or gennaker hoisted above the gooseneck, prior to their starting signal.

2. NOTICE TO COMPETITORS

- 2.1 Notices to Competitors will be posted on the Official Notice Board in the northeast window of the clubhouse upper lever and may be posted on-line at the Regatta Network event site.
- 2.2 On the water, the Race Committee may use VHF channel 68 for communication

3. CHANGES TO SAILING INSTRUCTIONS

- 3.1 Any change to these sailing instructions will be posted before 1000 on the day it will take effect, except any changes to the schedule of races will be posted by 2000 on the day before it will take effect.

4. SIGNALS MADE ASHORE

- 4.1 Signals made ashore will be displayed from the SCYC Clubhouse flagpole.
- 4.2 When flag AP is displayed ashore, '1 minute' is replaced with 'not less than 60 minutes' in race signals AP.

5. SCHEDULE OF RACES

- 5.1 Date of Racing for all classes: February 13, 2021
- 5.2 The scheduled time of the warning signal for the first division is 1055, followed by the second division noted by the Class Flag.

6. CLASS FLAGS

<u>Class</u>	<u>Class Flag</u>
Santa Cruz 27	Flag with Santa Cruz 27 Class symbol
Moore 24	Flag with Moore 24 Class symbol

7. RACING AREA

- 7.1 The racing area will be within five miles of Walton Lighthouse at Santa Cruz Harbor.

8. MARKS

- 8.1 All marks listed in the table below are rounding marks except marks "Start" and "Signal Vessel".
- 8.2 A Chartlet provided below shows the relative positions of the marks, but should not be used for navigational purposes.
- 8.3 Three course marks are SC6, SC4 and SC3. Boats shall round these marks in any order and in either direction.

9. THE START

- 9.1 The starting line will be between mark S and an orange flag displayed from a staff aboard the signal boat.
- 9.2 The race committee may hail, on VHF channel 68, the sail number or other identifying feature of any boat that was on the course side of the starting line at the start signal. The failure of a hail, the failure of a boat to hear a hail, or the order of the hail(s) shall not be the ground for a boat to request redress. The changes RRS
- 9.3 The starting /finishing line is restricted and may only be crossed when starting or finishing. Boats may start in either direction.

10. CHECKOUT

- 10.1 A boat that retires from a race shall notify the race committee at the first reasonable opportunity.

11. THE FINISH

11.1 The finishing line will be the same as the starting line. Boats may finish in either direction.

12. PENALTY SYSTEM

12.1 RRS rule 44.1 is changed so that the Two-Turns Penalty is replaced by the One-Turn Penalty.

13. PROTESTS AND REQUESTS FOR REDRESS

13.1 Protest Forms are available at the SCYC Regatta Shed and Clubhouse, or online
<https://cdn.ussailing.org/wp-content/uploads/2018/01/US-Sailing-2017-2020-Protest-Form.pdf>

Protests and requests for redress or reopening shall be delivered to the SCYC regatta shed or emailed to the Race Committee as soon as possible following the infraction within the time limit.

13.2 The protest time limit is sixty (60) minutes after the time limit of the last boat finishing. The protest filing time limit will be posted on the official notice board.

13.3 Notices will be posted no later than thirty (30) minutes after the protest filing time limit to inform competitors of the hearing in which they are parties.

14. SCORING

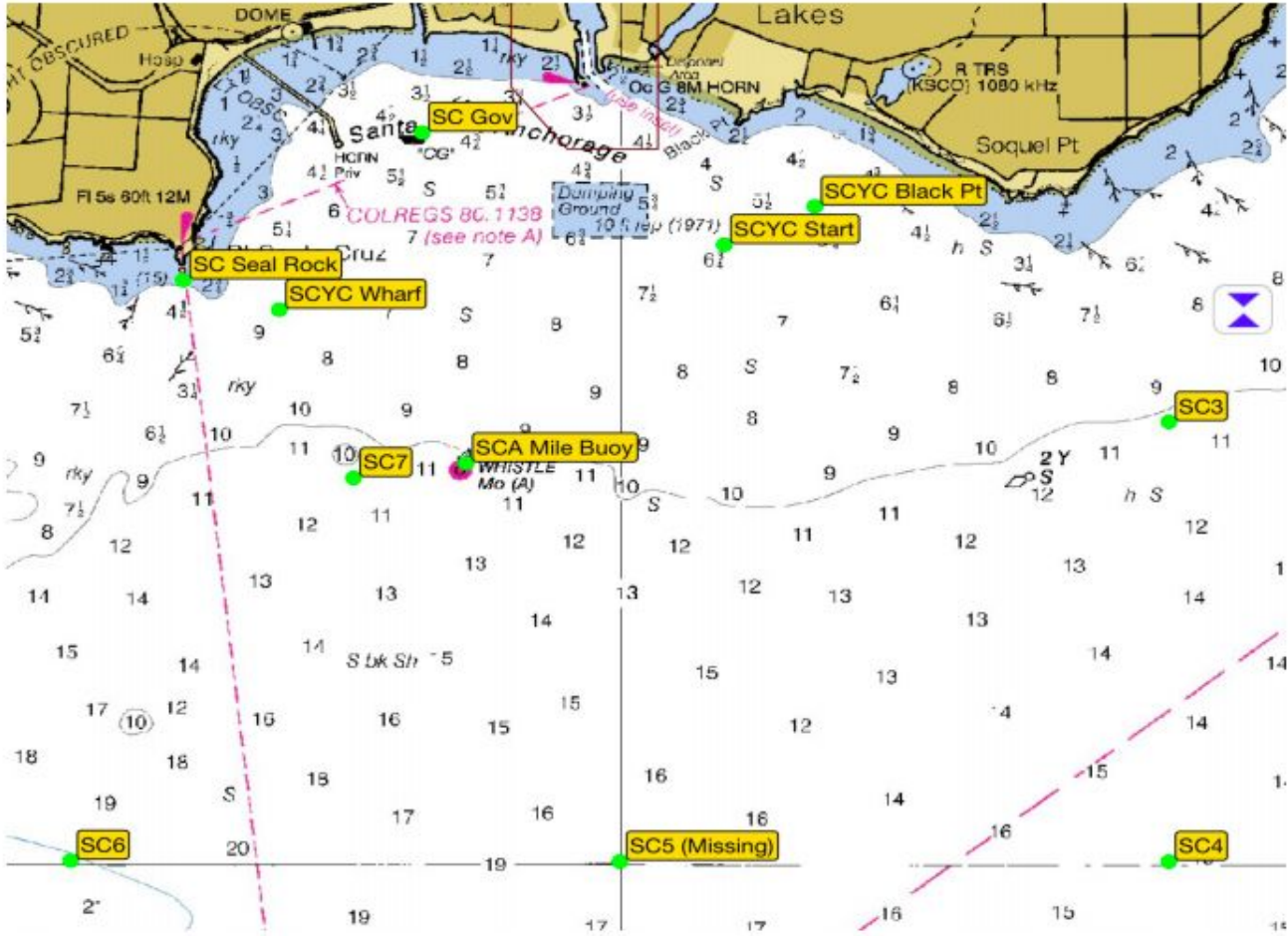
14.1 Standings for each division may be calculated and posted on Results Regatta Network.

Appendix A Marks Descriptions

Government (GOV)	36°57.47'N -122°00.72' W	Large white metal ball marked (GOV)
Mile Buoy (Mile)	36°56.35'N - 122°00.56'W	Large RW "SC" Whistle buoy
SC 3	36°56.50'N - 121°58.00' W	Yellow cylinder marked "SC3"
SC 4	36°55.113'N - 121°56.547'W	Yellow cylinder marked "SC4"
SC 6	36°55.455'N - 122°02.220'W	Yellow cylinder marked "SC6"
SC 7	36°56.51'N - 122°01.01'W	Yellow cylinder marked "SC7"
Signal Vessel	Near mark "Start"	RC Signal Vessel
Start (S)	36°57.06'N -121°59.63'W	Inflatable red ball

Appendix B Chartlet

MARKS LOCATION CHARTLET SHOULD NOT BE USED FOR NAVIGATION PURPOSES



Appendix C Mark Distances and Bearings

Start/Fin20	Bearing (M)	Distance	Total Distance		36° 57.06' N	121° 59.64' W
SC6	232	2.61	2.61		36° 55.455' N	122° 02.22' W
SC4	94	4.55	7.17		36° 55.113' N	121° 56.547' W
SC3	320	1.81	8.98		36° 56.50' N	121° 58.00' W
Start/Fin20	293	1.43	10.40		36° 57.06' N	121° 59.64' W