

SAILING INSTRUCTIONS

82nd Annual One Design Regatta

August 14-15, 2021

Fishing Bay Yacht Club

Deltaville, Virginia

1. RULES

- 1.1. The regatta will be governed by the rules as defined in The Racing Rules of Sailing (RRS) for 2021-2024, and current applicable class rules.
- 1.2. If there are any discrepancies between the Notice of Race and the Sailing Instructions, the Sailing Instructions take precedent.
- 1.3. Competitors in the Portsmouth class must fly a red streamer at the aft end of the vessel's boom. (Streamer will be provided at check-in)

2. NOTICES TO COMPETITORS

2.1 Changes to these Sailing Instructions will be posted by 1000 on the day they will take effect, except that any change to the schedule of races will be posted no later than 1800 on the day before it will take effect. The Official Notice Board is located between the Main Clubhouse and the parking lot.

3. SIGNALS MADE ASHORE

- 3.1. Signals made ashore will be displayed on the flagpole on the Fishing Bay Dock.
- 3.2. The display of Flag "AP" accompanied by two sound signals means the start of racing is postponed. The lowering of Flag "AP" with one sound means the Warning Signal for the next race shall be made in not less than 60 minutes. This changes RRS Race Signal "AP" relative to signals made ashore only.
- 3.3. Signals made ashore shall be for all classes and courses for the regatta.

4. CHANGES TO INSTRUCTION ON THE WATER

- 4.1. If additional changes/instructions are needed to be conveyed to competitors on the water prior to the start, code flag 'Y' will be hoisted while RC is anchored. Competitors are requested to tune to the VHF channel assigned to their course in Appendix C, and/or sail by the signal boat for verbal instructions.
- 4.2. Code Flag "A" displayed as boats are finishing means "No more racing today on this course."

5. SCHEDULE

Friday, August 13, 2021

Late Registration & Check in 1700–2000

Saturday, August 14, 2021

Continental Breakfast 0800

Check-In 0800 - 0925

Skippers Meeting 0930

First Warning Signal 1100

Followed by subsequent races

Post-Race Bar 1700

Buffet Dinner 1800

Sunday, August 15, 2021

Continental Breakfast 0800

First Warning Signal 1000

Followed by subsequent races

No races shall be started after 1400 on Sunday.

6. CLASS FLAGS

6.1 Class flags, assigned race areas and intended start orders will be listed in Appendix C

6.2 Starting class of subsequent races will be as signaled with class flags.

7. RACING AREAS

7.1. Appendix B shows the approximate location of racing areas.

7.2. Class assignments to racing areas will be listed in Appendix C

7.3. Boats may be led to another racing area by hosting code flag 'L'.

8. THE COURSES

8.1 Example courses are illustrated in Appendix A,

8.2 The course for each class will be designated by displaying letter(s) on the Race Committee Signal Boat. A number following the course designation will indicate the number of legs. (Other examples include: "W2" is windward/leeward, "W4" is windward/ leeward/ windward/ leeward, and "H5" is windward/ leeward/ windward/ leeward/ windward.)

8.3 The Race Committee may deploy an Offset Mark adjacent to any Windward Mark.

Said Offset Mark shall be a mark of the course and passed after the Windward Mark in the same direction as the Windward Mark. If there is a change of course, there will not be an offset mark, even if it was present during previous rounding.

8.4 The "S" letter following the course designation indicates the finish line will be on the opposite side of the RC Signal Boat from the starting line.

8.5 The "L" letter following the course designation "W" indicates that the Race Committee will set two windward marks; the classes designated to sail the "L" course will round the farther windward mark, and all other classes will round the nearer windward mark.

9. MARKS

9.1. Marks of Race Courses B & C shall be orange inflatable marks. Course A (Juniors) will have inflatable marks as designated by race committees.

9.2. New change marks, as provided in Rule 33, will be yellow inflatable marks.

9.2.1. If the course is changed after the start, only one change mark will be set. All boats shall round this single change mark.

9.2.2. If course has a long and a short weather mark, all boats will round the single change mark.

9.3. The starting and finishing marks will be orange inflatable marks.

10. THE START

10.1 The starting line will be between the staff from which a yellow or orange flag is displayed on the RC signal boat and the starting mark (pin).

10.2 Boats starting later than four (4) minutes after their starting signal will be scored Did Not Start without a hearing. This changes rules A4 and A5.

10.3 Boats whose warning signal has not been made shall avoid the starting area during the starting sequence for other classes.

10.4 As a courtesy, to alert boats that a starting sequence will begin shortly, the Race Committee may make multiple sounds approximately one minute prior to the warning signal. This is not a timed sound signal.

10.5 Each boat is required to check in at the Race Committee signal boat by hailing her sail number and class and being acknowledged by the Race Committee before the warning signal of the first race in which she intends to participate. A boat may not protest a breach of this instruction. This changes Rule 60.1

10.6 Race committee will attempt to hail OCS boats by sail number on individual recalls. Failure of the Race Committee to make this hail, failure of a boat to hear the hail, her position in the sequence of notifications or promptness of notification will not be valid grounds for redress. This modifies Rule 29.1

10.7. Attempt to notify OCS boats will be using VHF channel designated in Appendix C

11. THE FINISH

11.1. The finishing line will be between a yellow or orange flag (or staff with code flag "S" if course has been shortened) on a committee boat and the designated finishing mark.

1. A boat sailing the course whose finish position cannot be changed no matter how she finishes, may be requested by the Race Committee to immediately return to the starting area. Such a boat will be scored as though she had completed the race. This changes Rules 28.1, 35, A4.1 and A4.2

12. TIME LIMITS

12.1. The time limit for the first class boat to finish will be 75-minutes.

12.2. Boats failing to finish within 30-minutes after the first boat in class finishes will be scored TLE and given points 1 greater than the number of boats finishing the race. This changes Rules 35.

13. PROTESTS AND REQUESTS FOR REDRESS

13.1. A boat intending to protest another boat must so notify the Race Committee by hail immediately after finishing or retiring. This notification must include the boat name and/or sail number of the boat being protested and must be acknowledged by the Race Committee. This changes Rule 61.1(a).

13.2 Protest forms are available on the glass display case inside the first floor of the FBYC Main Clubhouse.

13.3 The time limit for filing written protests is one hour after the Race Committee for that course moors at FBYC. This protest time limit will be posted on the Official Notice Board. If the Race Committee posts a list of boats scored OCS, ZFP, or BFD on the Official Notice Board before expiration of the protest time limit, the time for filing a request for redress based on such a score shall be made no later than 30 minutes after the protest time limit. This changes Rule 62.2.

13.4 A notice of protests and requests for redress filed, approximate hearing times and place of hearing will be posted on the Official Notice Board within 30 minutes after the end of protest time.

13.5 Any skipper wishing to become party to a redress hearing must notify the Race Committee in writing within 45 minutes after the end of protest time

14. SCORING

- 14.1. One completed race shall constitute the regatta.
- 14.2. Low-point scoring will apply with the exception of no throw-outs.
- 16.3. Current Portsmouth Yardstick D-PN Handicaps found on the US Sailing web site will be used to score races comprised of unlike boats

15. SAFETY

- 15.1. A boat shall carry all equipment required by her class rules. If not so specified, she shall also carry one USCG-approved PFD for each person on board.
- 15.2. A boat that retires from a race shall notify the Race Committee as soon as possible.
- 15.3. A yacht requesting assistance should attempt to signal by repeatedly waiving an extended arm. A yacht may also contact the Race Committee on VHF Channel designated for their course in Appendix C.
- 15.4. Each boat should carry a tow line of appropriate diameter and length for the class of boat.
- 15.5. Boats disabled or unable to return to the dock under their own sail may be towed to a non-race mark, clear of the racing area, and will be asked to tie off/anchor there until a break in the racing permits a safety or Race Committee boat to tow the disabled vessel to dock.

16. AWARDS

- 16.1. Annual One Design Awards will be given to the first 3 finishers in each class with 5 or more entries.
- 16.2. The John R. Hawksworth Memorial Trophy will be awarded to the class winner who has been most competitive as measured both by the degree to which he has consistently been at the top of his class and the number of boats against which he has competed. The formula used for calculation is:
HAWKSWORTH Score = (Class Score/Average Starters) times (Minimum Races/Class Races)

17. DISCLAIMER OF LIABILITY

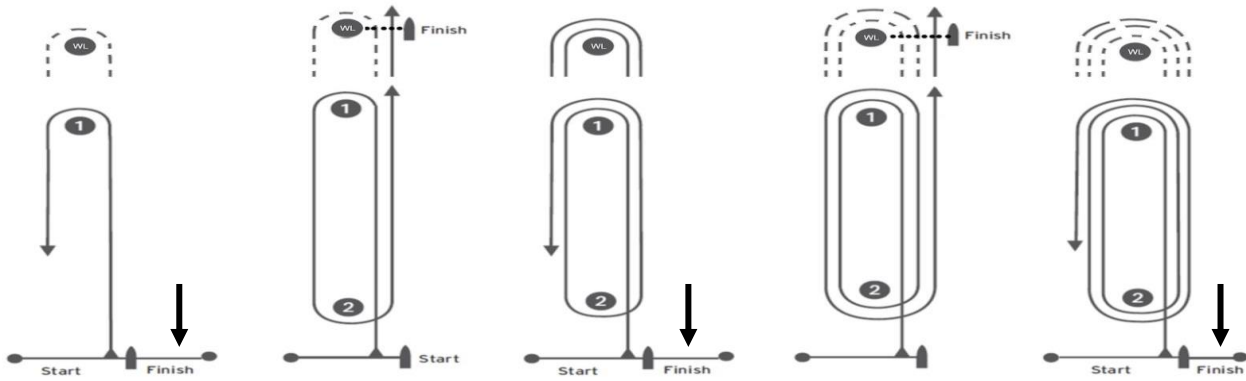
- 17.1. Competitors participate in the regatta entirely at their own risk. See Rule 4, Decision to Race. The organizing authority will not accept any liability for material damage or personal injury or death sustained in conjunction with or prior to, during or after the regatta.

18. Discipline

18.1 All competitors are expected to maintain the highest level of conduct throughout the entire event. When the Protest Committee, from its own observation or a report received from any source believes that a competitor may have committed a breach of a rule, good manners, or sportsmanship, or may have brought the sport into disrepute, it may call a hearing. After a proper hearing the penalty may range from a reprimand to dismissal from the regatta and additional action may be taken under RRS 69.

Appendix A

All marks are to be rounded to port. There may be two windward marks used. For all courses with a leeward finish, the leeward mark has no significance on the last leg of the course. For windward finishes the finish line will be located between the longest weather mark and an RC boat displaying an orange finish flag. Additionally, for windward finishes when a long weather mark (WL) is in use, the short weather mark has no significance on the finish leg.



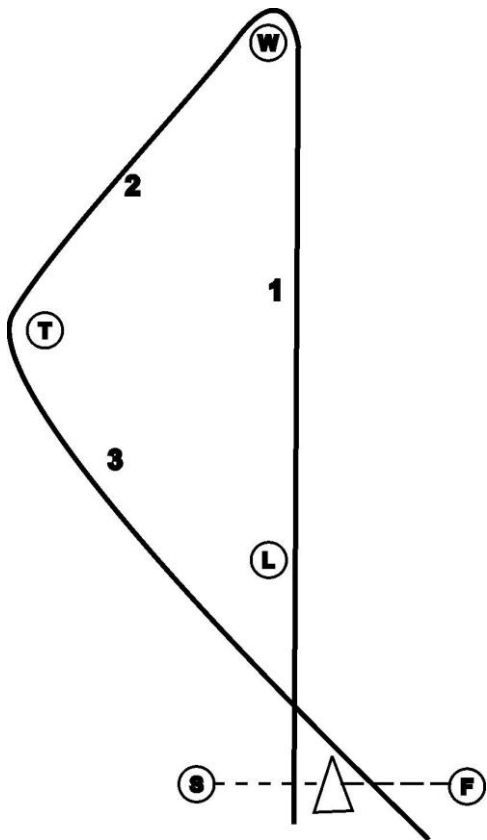
'W2' & 'WL2'

'W3' & 'WL3'

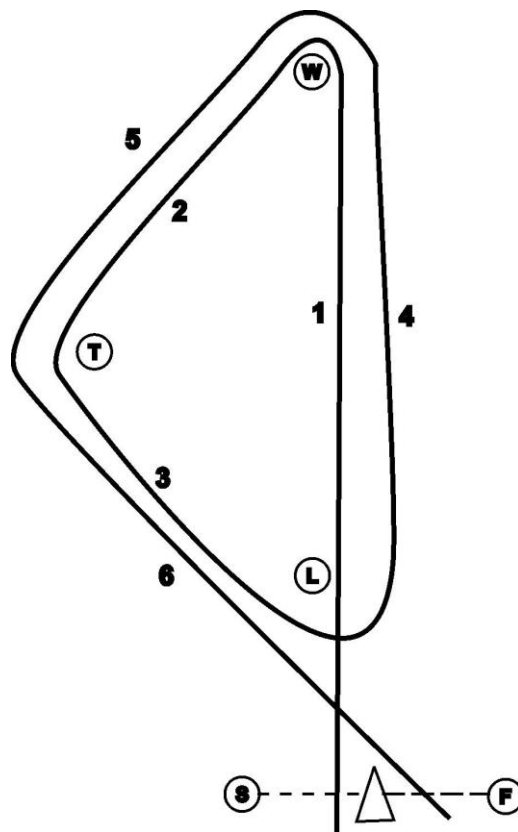
'W4' & 'WL4'

'W5' & 'WL5'

'W6' & 'WL6'



'T' (Start, W, T, Finish)

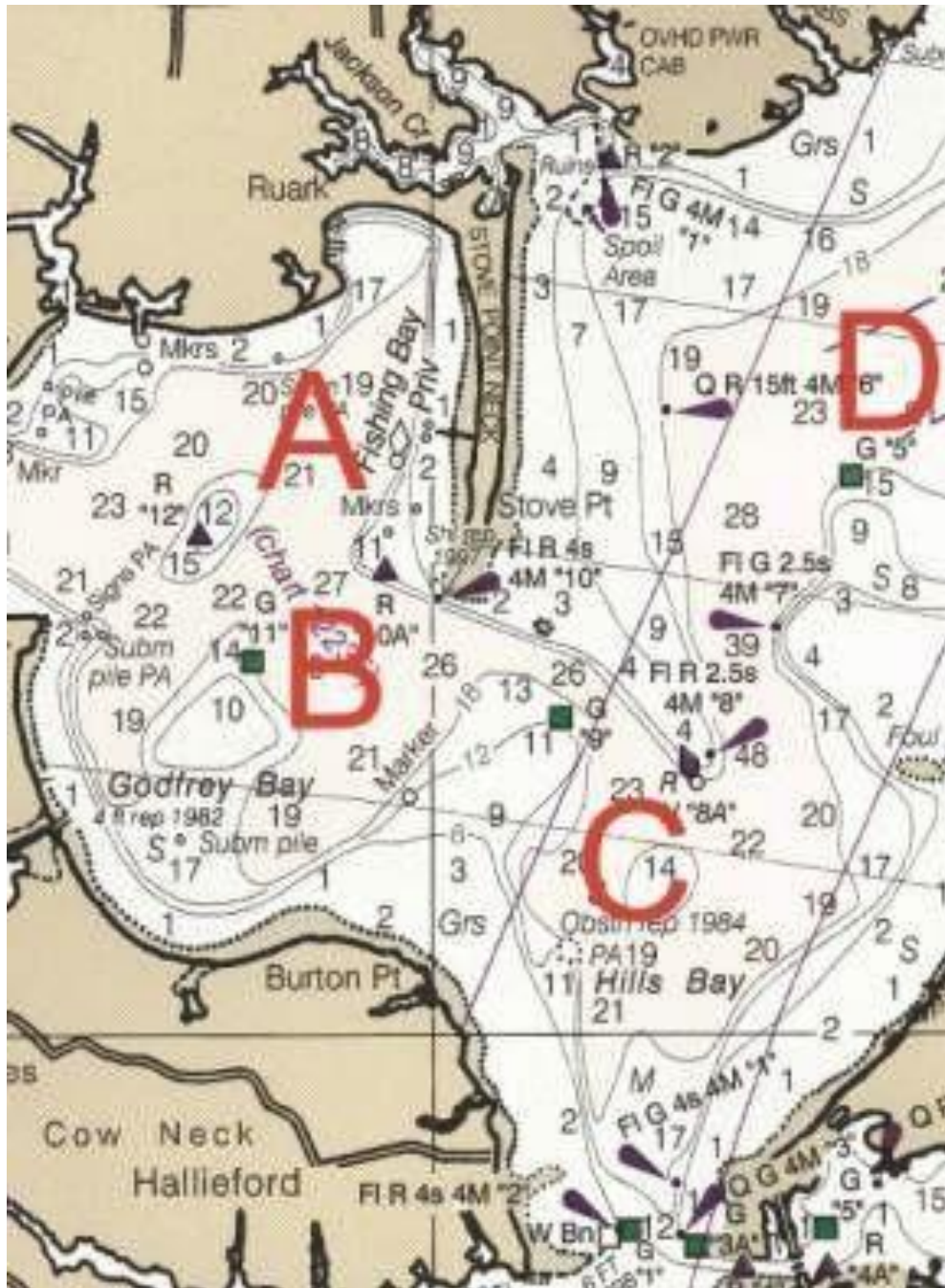


'T2' (Start, W, T, L, W, T, Finish)



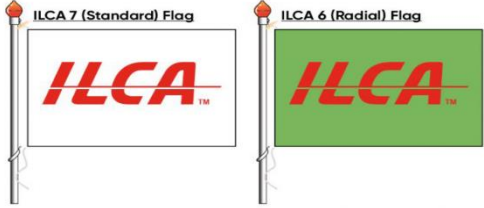

If 'TL' long windward mark
will be used

If 'T2L' long windward mark
will be used.

APPENDIX B



Appendix C

Expected Start Order	Class	Flag	Course Area	VHF Channel
1	Opti Green, Red, White, & Blue	<p>OPTI Flag</p> 	A	71
1	Flying Scot	<p>Flag with Flying Scot logo</p> 	B	69
2	ILCA Dinghy & ILCA Radial	<p>ILCA Dinghy = White flag ILCA Radial = Green flag</p> 	B	69
1	Ports-mouth	<p>Pennant 9</p> 	C	72
2	Typhoon	<p>Flag with Typhoon Logo Ty</p>	C	72

We wish to thank our sponsors:

Legend Brewing Company

Legend Brewing Co.



RICHMOND , VA

Evolution Sails Chesapeake
Latrell Sails



eEVOLUTION

sails

