



2022 Sunfish Championships
International Masters – Mar 12-15, 2022
US Nationals at Midwinters – Mar 18-20, 2022

Sailing Instructions

Organizing Authority: Clearwater Yacht Club, Clearwater, FL
Endorsed by International Sunfish™ Class Association (ISCA)
Endorsed by US Sunfish™ Class Association (USSCA)

1 RULES

- 1.1 The regatta will be governed by the rules as defined in the Racing Rules of Sailing (RRS).
- 1.2 The US SAILING Prescriptions to RRS 60.3, 61.4, 67, 70.5(a), 76.1 and Appendix R will apply. In addition, Appendix V will apply, amending NoR 1.2. US Sailing Prescriptions are contained in their entirety at: <https://cdn.ussailing.org/wp-content/uploads/2020/11/2021-2024-US-Prescriptions-Final.pdf>

2 NOTICES TO COMPETITORS

Notices to competitors will be posted on the Regatta Network event sites:

Masters - <https://www.regattanetwork.com/event/23705>

Midwinters - <https://www.regattanetwork.com/event/23706>

Courtesy copies of notices may be found on the bulletin board at CCSC.

3 CHANGES TO THE SAILING INSTRUCTIONS

Any change to the sailing instructions will be posted before 0900 on the day it will take effect, except that any change to the schedule of races will be posted by 2000 on the day before it will take effect.

4 SIGNALS MADE ASHORE

- 4.1 The signals made ashore will be displayed from a flagpole near the shore at CCSC.
- 4.2 When flag AP is displayed ashore '1 minute' is replaced with 'not less than 45 minutes' in race signal AP.

5 SCHEDULE OF RACES

Masters Date	Midwinters Date	Time	Activity	Comment
Sat, March 12	Thu, March 17	1500 - 1800	Check-in at CCSC	
Sun, Mar 13	Fri, Mar 18	0800-0900 0930 1130 After racing	Check-in at CCSC Competitor Meeting First Warning Q & A with top 3 finishers	CCSC 4 races scheduled CCSC
Mon, Mar 14	Sat, Mar 19	1000 After racing	First Warning Q & A with top 3 finishers	4 races scheduled CCSC
Tue, Mar 15	Sun, Mar 20	1000 1400 After racing	First Scheduled Warning No Warning after this time Prize giving	Three races are planned CCSC

5.1 One extra race per day may be sailed provided that racing does not get more than one race ahead of schedule.

5.2 To alert boats that a race or sequence will begin soon, the orange start line flag will be displayed with multiple sounds approximately one (1) minute before a warning signal is made.

6 CLASS FLAG

Sunfish Class Flag will be used.

7 RACING AREA

Races will be sailed in the Gulf of Mexico, Race Area A, north of Clearwater Pass. (Please see Attachment 1)

8 THE COURSE

8.1 The diagrams in Attachment 2 show the courses, including the angles between legs, the order in which marks are to be passed, and the side on which each mark is to be left.

8.2 If a gate mark (4s or 4p) is missing the remaining mark should be left to port.

9 MARKS

9.1 Marks 1, 2, 3, 4S and 4P will be orange tetrahedrons.

9.2 Mark OS (offset) will be an orange tetrahedron.

9.3 The new mark as provided in SI 11.2 will be a yellow tetrahedron.

9.4 The starting marks will be race committee vessels displaying orange flags.

9.5 The finishing marks (Fs and Fp) will be race committee vessels displaying blue flags.

9.6 Finishing Mark F on Course W5 will be a race committee vessel displaying a blue flag.

10 THE START

- 10.1 Races will be started in accordance with RRS 26 with the warning signal made five (5) minutes before the starting signal.
- 10.2 The start line will be between staffs displaying orange flags on the starting marks. A boat starting later than five (5) minutes after her starting signal will be scored Did Not Start without a hearing. This changes RRS A4.
- 10.3 No later than the warning signal, the race committee signal vessel will display the course, and approximate compass bearing of the first leg. The length of the first leg may also be posted.

11 CHANGE OF THE NEXT LEG OF THE COURSE

- 11.1 The race committee may, without signal, move a mark to change the direction up to 10 degrees or the length up to 10% of the previous length, provided that no boat is sailing to the mark.
- 11.2 To change the next leg of the course, when signaled in accordance with RRS 33, the race committee will lay a new mark (or move the finishing line) and remove the original mark as soon as practicable. When in a subsequent change a new mark is replaced, it will be replaced by an original mark.
- 11.3 When Mark 1 has been replaced, Mark 1a is no longer a mark of the course.

12 THE FINISH

The finishing line will be between a staff displaying a blue flag on the race committee vessel Fp and a staff displaying a blue flag on the race committee vessel Fs as illustrated on Attachment 2 – Possible Courses. Fp and Fs replace Yellow F and Blue finish boat on Course W5.

13 PENALTY SYSTEM

- 13.1 Appendix V will apply.
- 13.2 Penalties for breaking a rule other than those of Part 2, RRS 31 or RRS 42 will be determined by the protest committee. Penalties may be less than disqualification. The scoring abbreviation for a discretionary penalty imposed under this instruction will be DPI.

14 TIME LIMITS AND TARGET TIMES

- 14.1 Time limits and target times are as follows:

Race Time Limit	Mark 1 Time Limit	Target Time
90 minutes	30 minutes	50 minutes

- 14.2 If no boat has passed Mark 1 within the Mark 1 time limit the race will be abandoned. Failure to meet the target time will not be grounds for redress. This changes RRS 62.1(a).

- 14.3 Boats still racing 30 minutes after the first boat sails the course and finishes will be scored Time Limit Expired (TLE), as per SI 16.5 without a hearing. This changes RRS 35, A4.1, A5, and A11.

15 PROTESTS AND REQUESTS FOR REDRESS

- 15.1 Protest forms and scoring inquiry forms are available at CCSC. Cell phone pictures of completed forms shall be emailed to PRO Rick Lillie at rhillie@aol.com within the appropriate time limit and must include the name of the skipper of the boat, skipper's email address, and phone number. This supplements RRS 61.2.
- 15.2 The protest time limit is **45** minutes after the RC signal boat docks after the last race of the day or when RC signals no more racing today, whichever is later.
- 15.3 Notices will be posted on the online Official Notice Board (see SI 2) no later than 30 minutes after the protest time limit to inform competitors of hearings in which they are parties or named as witnesses.
- 15.4 Hearings will be held on the second floor of CCSC or by Zoom.

16 SCORING for each event (Masters and Midwinters)

- 16.1 One (1) race is required to constitute a regatta.
- 16.2 A maximum of eleven (11) races will be sailed.
- 16.3 When fewer than six (6) races have been completed, a boat's series score will be the total of her race scores.
- 16.4 When six (6) to eleven (11) races have been completed, a boat's series score will be the total of her race scores excluding her worst score.
- 16.5 Boats scored TLE will be scored points equal to the number of boats which sail the course and finish plus two (2) points. This changes RRS 35, A4, A5 and A10.

17 SAFETY REGULATIONS

- 17.1 Check-in Procedures: Prior to the warning signal for the first race of each day in which she intends to compete, each boat shall check in by sailing past the stern of the race committee signal vessel on starboard tack, hail her sail number and obtain acknowledgement of the race committee. Boats that fail to check-in may be scored DNS. This changes RRS A5.
- 17.2 A boat that retires from a race shall notify the race committee as soon as practicable. Failure by any competitor to inform the race committee either by hail, or by telephone to Kelley at 407-920-7545 that they have retired from racing may result in a 20% penalty in the competitor's last completed race. This also changes RRS A5.

18 REPLACEMENT EQUIPMENT

Substitution of damaged or lost equipment will not be allowed unless authorized by the USSCA Measurer or designate before the first race or by the race committee (the Principal Race Officer or designee) thereafter. Requests for substitution shall be made in writing to the race committee at the first reasonable opportunity.

19 OFFICIAL VESSELS

- 19.1 Official vessels will be marked as follows:
Race Committee Vessels: Blue flag with RC

- Judge Vessels: Flag "J" or blue flag with letter J
Race Committee Support Vessels: Red and white flag
- 19.2 Failure of an official vessel to display the designated flag shall not be grounds for redress. This amends RRS 62.1(a).

20 SUPPORT VESSELS

- 20.1 If a competitor support vessel does not comply with applicable rules, restrictions, or instructions a discretionary penalty may be applied by the protest committee to some or all associated competitors and may include restrictions on the movement of their support vessel.
- 20.2 Competitor support vessels may be required to act as race committee support vessels upon instruction from a race official.

21 TRASH DISPOSAL

Trash may be placed aboard support or official vessels.

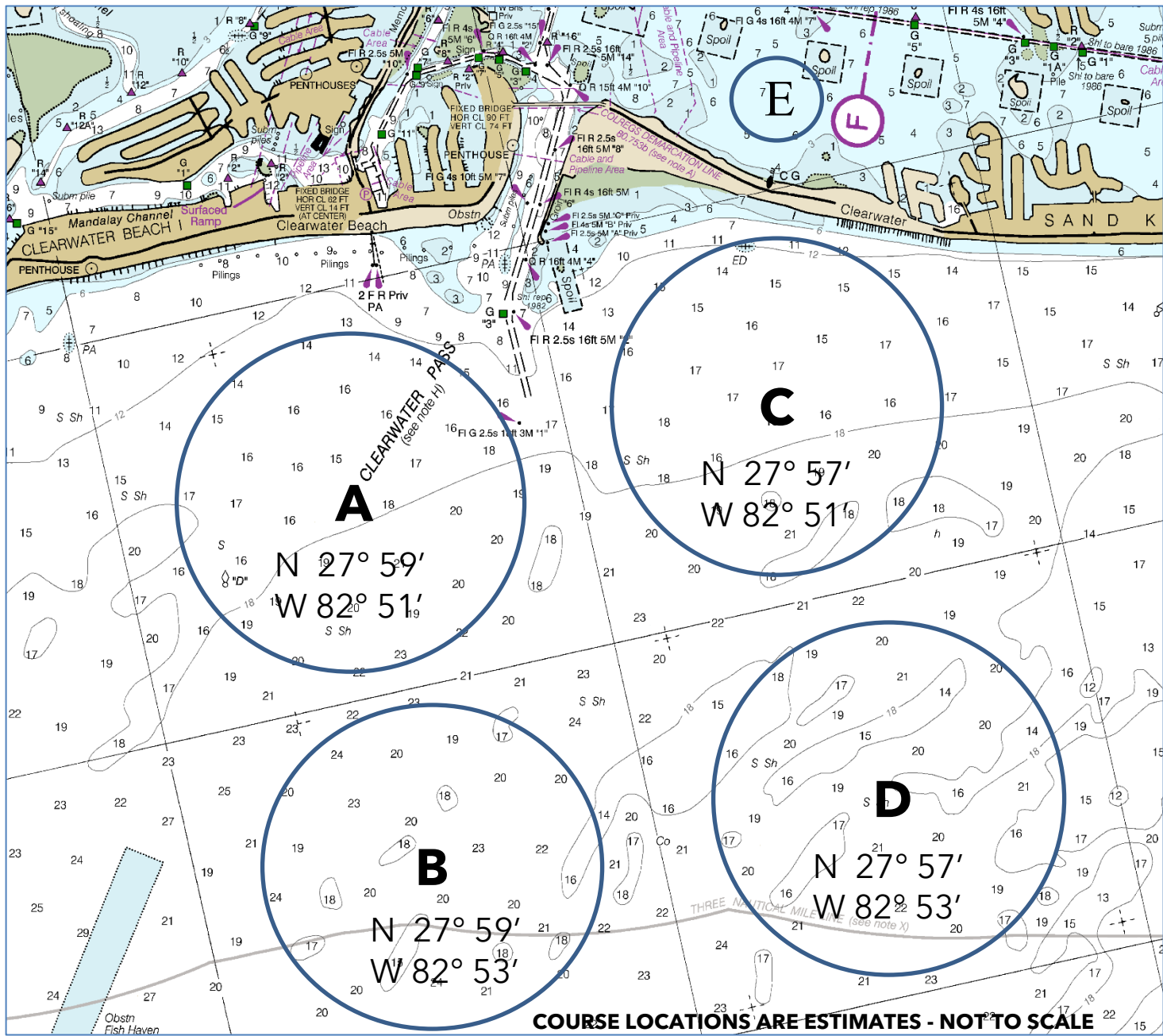
22 RADIO COMMUNICATION

Except in emergency, a boat shall neither make radio transmissions while racing nor receive radio communications not available to all boats. This restriction also applies to mobile telephones.

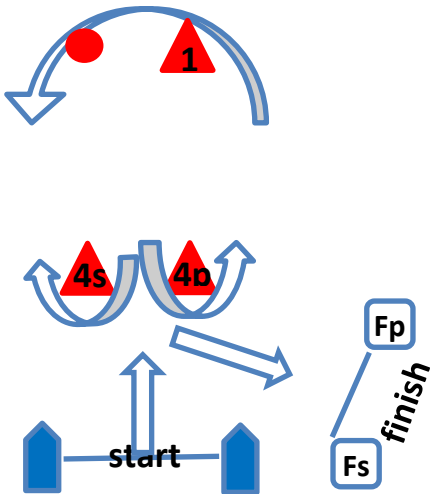
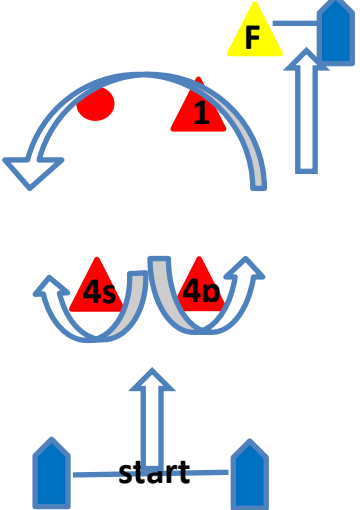
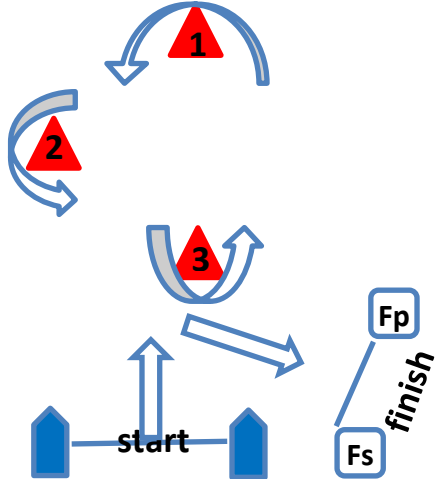
23 DISCLAIMER OF LIABILITY

Competitors participate in the regatta entirely at their own risk. See rule 3, Decision to Race. The organizing authority will not accept any liability for material damage or personal injury, illness, disease, or death sustained in conjunction with, prior to, during, or after the regatta

Attachment 1 - Approximate Racing Area



Attachment 2 – Possible Courses

Course L4 – Windward/Leeward (4 legs) Reach to Finish	Course W5 - Windward/Leeward/finish to Windward (5 legs)	Course T5 – Triangle/Windward/Leeward Reach to Finish
		
Mark Rounding Order – Start, 1, OS, 4s/4p, 1, OS, 4p, finish (Fs/Fp)	Mark Rounding Order – Start, 1, OS, 4s/4p, 1, OS, 4s/4p, finish	Mark Rounding Order – Start, 1, 2, 3, 1, 3, finish (Fs/Fp)