



San Diego Coastal Cup 2022

2022 SDPHRF Championship Event

San Diego Pursuit to Mission Bay Race

Fun Race for San Diego Bay to Mission Bay

Friday, May 27th, 2022

Hosted by SWYC & MBYC

Butler Invitational Race

Mission Bay to Oceanside

Saturday, May 28th, 2022

Hosted by MBYC & OYC

&

Oceanside to SWYC Race

Oceanside to San Diego

Sunday, May 29th, 2022

Hosted by SWYC & OYC

Sailing Instructions

MBYC Regatta Chair – Kathy Dryden 760-703-9950

MBYC PRO - Craig Storms (760) 705-4087

OYC Regatta Chair - Mark Mallaby 858-382-1934

SWYC Regatta Co-Chairs – Brad Alberts/Don Garber

SWYC PRO/Event Protest Chair – Colleen Cooke

sailorcookie@cox.net

[DP] – Discretionary Penalty • [NP] – Not Protest-able

1. RULES

- 1.1. The regatta will be governed by the rules as defined in The Racing Rules of Sailing.
- 1.2. When a boat sailing under the RRS meets a boat that is not, she shall comply with the International Regulations for Preventing Collisions at Sea.
- 1.3. All racers shall adhere to the defined Naval Protection Zone (33 C.F.R. 165.2030).
- 1.4. Sail numbers on all sails flown must comply with US Sailing RRS for size, contrast, and general placement. They must also agree with the numbers indicated on the entry form.
- 1.5. Boats that **go aground, get caught in kelp or need to move to avoid a vessel outlined in Section 1.8** below may use their engines provided the boat does not gain a significant advantage in the race. This modifies and includes RRS 42.3.
- 1.6. [DP] Discarding biodegradable bands into the water when setting a spinnaker may be less than disqualification. Racers remain responsible for compliance with RRS 47, all applicable state, and federal laws.
- 1.7. This event shall also be governed by the SoCal PHRF Class Rules. <https://phrfsocal.org/wp-content/uploads/Rules/lr.pdf>
- 1.8. [DP] NAVAL and CRUISE SHIP PROTECTION ZONE: A naval protection zone exists in a radius of 500 yards (CFR 165.2015) around U.S. naval vessels greater than 100 feet in length, except when the large naval vessel is moored or anchored within a restricted area. All vessels within a naval vessel protection zone shall operate at the minimum speed necessary to maintain a safe course and shall proceed as directed by an official patrol, and when within such zone, no vessel is allowed within 100 yards of a large U.S. naval vessel (CFR 165.2030). No vessel is allowed within 100 yards of a cruise ship (CFR 165.1108).

2. NOTICE TO COMPETITORS

- 2.1. Notices to competitors will be posted on the regatta website prior to 08:30 hours on Thursday, May 27th for the San Diego Pursuit to Mission Bay. <https://www.regattanetwork.com/event/24495>
- 2.2. Notices to competitors will be posted on the regatta website prior to 08:30 hours on May 28th for the Mission Bay to Oceanside Race. <https://www.regattanetwork.com/event/24495>
- 2.3. Notices to competitors will be posted on the regatta website prior to 08:30 hours on May 28th for the Oceanside to San Diego Race. <https://www.regattanetwork.com/event/24495>
- 2.4. Official Class assignments will be established and posted on the regatta website no later than 1200 on Friday, May 28th, 2022. Provisional assignments MAY be posted earlier.

3. CHANGES IN SAILING INSTRUCTIONS

- 3.1. **Ashore:** Any change in the Sailing Instructions for the Butler Race to Oceanside will be posted on the Regatta website no later than 2000 hours on Friday, May 27th, 2022. Any change to the Sailing Instructions for the Oceanside to San Diego Race will be posted on the Regatta web site no later than 0900 hours on Sunday, May 29th, 2022.
- 3.2. **Afloat:** Any change in the Sailing Instructions made afloat will be communicated via **VHF Channel 68** and/or loud hailer per RRS 90.2.

4. SCHEDULE OF RACES

- 4.1. The San Diego Pursuit To Mission Bay Race is scheduled for Friday, May 27th, 2022. Time of the First Warning will be 12:55 hours.
- 4.2. The Butler Invitational Race is scheduled for Saturday, May 28th, 2022. Time of the First

Warning will be 11:40 hours.

- 4.3. The Oceanside to San Diego Race is scheduled for Sunday, May 28th, 2022. Time of the First Warning will be 10:55 hours.

5. CLASSES, CLASS FLAGS AND STARTING ORDER

- 5.1. Class Assignments, Class Flags and Starting Order will be established and posted on the regatta website no later than 08:00 Friday, May 27th, 2022, and shall be considered an amendment to the sailing instructions.
- 5.2. Class flags will be displayed from the yacht's backstay and be provided by the yacht's owner. Boats without a backstay shall display their pennants in a prominent manner on the stern. All yachts must display the class flag of the class they are assigned to for the race.

6. CHECK-IN

- 6.1. For Saturday's & Sunday's races, eligible yachts complete their entry by checking in with the RC boat prior to their First Warning signal. Yachts checking in shall pass the RC boat to starboard and hail with **sail number, class, and number of crew**. Check-in will be complete only when RC boat responds with that information. RADIO CHECK-IN is also permitted. Yachts are considered checked in ONLY when RC confirms via **VHF 68**.
- 6.2. Yachts who do not receive RC confirmation, must verify their check-in with the RC vessel prior to their Warning Signal.
- 6.3. Check-in will not be accepted during start sequences after the Warning for each race.
- 6.4. Check-in NOT required for Friday's Pursuit Race.

7. RACING AREA

- 7.1. For the **San Diego Pursuit to Mission Bay Race** - The racing area is between San Diego Bay Buoy 17 area, offshore La Jolla & Mission Bay entrance area.
- 7.2. For the **Butler Race to Oceanside** - The racing area is between Mission Bay entrance area, offshore La Jolla & north San Diego County and the Oceanside Pier.
- 7.3. For the **OYC to SWYC race** - The racing area is between Oceanside Harbor entrance area, offshore north San Diego County, La Jolla, and the San Diego Bay rounding the SD Buoy into San Diego Bay entrance (Course 1) or adjacent to Buoy 3 (Course 2).

8. THE COURSES • Use US Geodetic Chart Numbers 18740 (5101) & 18772 (5107). All buoys are USCG unless noted

- 8.1. Friday: **The San Diego Pursuit to Mission Bay Race**: All classes will sail the same course:
 - All classes will sail the same course:
 - Start in the vicinity of Buoy 17
 - Round Buoy 3 to starboard
 - Finish inside the MB harbor entrance at 5 mph markers

NOTE 1: **Distance for handicap purposes is 12.5 nautical miles**

- 8.2. Saturday: **The Butler Invitational** - All classes will sail the same course:
 - Start -- approximately $\frac{3}{4}$ nm NW of the Mission Bay Entrance as shown in Appendix (A)
 - Leave Mark A (Orange Tetrahedron approximately 1nm upwind from the start-line) to starboard;
 - Finish off Oceanside Pier (approximately 250 yards due west of pier) as shown in Appendix (B).

NOTE 1: **Distance for handicap purposes is 28.3 nautical miles**

- 8.3. Sunday: **The Oceanside to SWYC Race** - There will two different courses:
 - **Start** - all boats will start approximately 250 yards due west of the Oceanside pier as shown in Appendix (E)

Course 1: *Classes To Be Covered In An Amendment (see Appendix F- NOTE: all appendixes are for reference only, not to be considered a rule for the SI's)*

Sail to the SD channel entrance buoy (SD) and round it to port

Finish: For the finish line, see SI Section 12.3.

NOTE 1: **Distance for handicap purposes is 37.6 nautical miles**

Course 2: *Classes To Be Covered In An Amendment (see Appendix F)*

Sail to San Diego Buoy 3

Finish: For the finish line, see SI Section 12.3.

NOTE 1: **Distance for handicap purposes is 35.0 nautical miles**

9. THE START

9.1. **Friday's San Diego Pursuit to Mission Bay Race** - All classes will sail the same course:

Start: between the RC inflatable dingy taken to starboard and Buoy 17 at the port end.

- The start will be conducted in accordance with RRS 26, except as modified by these sailing instructions. Starting times will be staggered according to PHRF handicaps.
- **Audible Starting Signals found in RRS Appendix U will be used.**
- Individual yacht pursuit starting times will be included in an Amendment to the SI's.
- The first Warning Signal will be at 12:55 p.m. The first start will be at 1:00 p.m. A horn will be sounded every 10 minutes after the first start.
- Each boat's start time shall be signaled by a **whistle sound** at their designated start time.
- Starting Penalties: Rule 30.1 ("I-Flag Rule") will apply to all starts.
 - The Starting Line will be between a staff displaying an Orange Flag on the RC Signal Boat at the starboard end and Buoy 17 at the port end of the line
 - As a courtesy, the RC may announce any such changes on **VHF Channel 68**
 - Yachts whose warning signal has not been made shall avoid the starting area. Yachts not in their Warning period and observed obstructing fellow racers may be penalized by the RC without a hearing. This changes RRS 63.1.

Failure of a yacht to hear a hail OR failure of the RC to hail shall not be grounds for redress. It is the responsibility of each yacht to listen to the sound signals and start properly.

9.2. **Saturday: The Butler Invitational** - All classes will sail the same course:

Start: all boats start approximately $\frac{3}{4}$ nm NW of the Mission Bay Entrance as shown in Appendix C & D.

- The Starting Line will be between a staff displaying an Orange Flag on the RC Signal Boat at the starboard end and a yellow mark at the port end of the line. (The yellow mark at Mission Bay will be a tetrahedron) A distance buoy may be streamed aft of the RC boat and if present shall be considered part of the RC boat. For purposes of RRS 31.1 (Touching A Mark), this buoy is to be considered a permanent part of the starting mark.
- The Warning signal for each class will be five (5) minutes prior to its start. A 5:00 min gap between the start of one class and the Warning of the next class shall be used by the RC. As a courtesy, VHF transmission of the start sequence may be made. The absence of VHF calls shall not grounds for redress
- Yachts whose warning signal has not been made shall avoid the starting area. Yachts not in their Warning period and observed obstructing fellow racers may be penalized by the RC without a hearing. This changes RRS 63.1.

- The class starting order will be included in the Class Break amendment.

9.3. **Sunday: The Oceanside to SWYC race-** *There will two different courses as described in 8.3*

Start – all boats start approximately 500 yards directly west of the Oceanside Pier (as illustrated in Appendix E). A distance buoy may be streamed aft of the RC boat and, if present, shall be considered part of the RC boat. For purposes of RRS 31.1 (Touching A Mark), this buoy is to be considered a permanent part of the starting mark.

- The Warning signal for each class will be five (5) minutes prior to its start. A 5:00 min gap between the start of one class and the Warning of the next class shall be used by the RC. As a courtesy, VHF transmission of the start sequence may be made. The absence of VHF calls shall not grounds for redress
- Yachts whose warning signal has not been made shall avoid the starting area. Yachts not in their Warning period and observed obstructing fellow racers may be penalized by the RC without a hearing. This changes RRS 63.1.

10. RECALLS

- 10.1. Individual recalls shall be signaled in accordance with RRS 29.1. The RC may attempt to notify premature starters either by loud hailer or VHF Channel 68. The failure of any boat to hear her hail, the timing of the hail, and/or the order of the hail Shall Not be grounds for redress. This changes RRS 62.1.
- 10.2. General Recalls will be pursuant to RRS 29.2.
- 10.3. Under World Sailing Test Rule DR21-01, change the definition Start as follows: Start A boat starts when her hull having been entirely on the pre- start side of the starting line, and having complied with rule 30.1 if it applies, any part of her hull crosses the starting line from the pre-start side to the course side either
- (a) at or after her starting signal, or
 - (b) during the last 15 seconds before her starting signal.
- 10.4. When a boat starts in accordance with item (b) of the definition Start, she may return to the pre-start side of the line to comply with item (a) of the definition of Start, but, if she does not, she shall receive a Scoring Penalty calculated in accordance with RRS 44.3(c).

11. WITHDRAWAL

11.1. A yacht that retires from any of the three Coastal Cup races must notify the RC before leaving the course or call the RC on VHF 68 or 858-335-1822, MBYC at 858-488-0501, or OYC at 760-586-6902 or 619.757.0684. Failure to do so shall result in disqualification from this race and possible rejection of entry for subsequent races. No refund of entry fees for disqualification

12. THE FINISH

12.1. **Friday: San Diego Pursuit to Mission Bay Race** – proper finish will be inside the Mission Bay harbor entrance at the first set of 5 mph markers as shown in Detail A & B at the end of the SI's

NOTE 1: There will be no RC Boat on station at the finish location. The skipper shall take the time when the boat crosses the above described finish line (GPS Time) and send an e-mail report to shelly.raming@gmail.com or text to **858.232.7725** within 30 minutes of finishing.

Report in your email: Please ensure your **boat name is in the subject line of the email!**

Sail #: _____, Boat Name: _____, Class: _____,

Finish Time (GPS): hr: _____ min: _____ sec: _____,

Your name and telephone number _____,

The sail number and the time ahead of and behind the nearest finishing boat(s)_____.

12.2. **Saturday: Butler Invitational Race** When the lead yacht of the leading class is within two hours of finishing, she is requested to so advise the RC via VHF 68.

- The finish area for the **Butler Invitational** shall be approximately 250 yards directly west of the Oceanside Pier.
- The Finish Line shall be between a staff displaying a blue flag on the RC boat at the port end and a yellow tetrahedron on the starboard end (or south end of the Oceanside Pier if a mark is not present).
- If no finish mark is present pass within 3 boat lengths from the RC boat) . A proper finish will leave the RC boat to port. (See Attachment E)

12.3. **Sunday: Oceanside to SWYC Race**

Course 1 shall finish within three boat lengths west of San Diego Buoy 3 (See Appendix F)

- No RC boat will be on station at the finish of the Oceanside to SWYC race. Yachts shall record their own finish time.
- Yachts shall take their own finish time when they are directly west of Buoy 3 within three (3) boat lengths. Times taken must be **corrected to GPS time** and emailed within 30 minutes of finishing. See 12.4 below.

Course 2 shall finish within three boat lengths west of San Diego Buoy 5 (See Appendix F)

- The finish line will be the extension of the line created by SD Channel Buoys #5 & #6, leaving Buoy #5 to starboard NNE bound and finishing within three (3) boat lengths of [DP].
- No RC boat will be on station at the finish of the Oceanside to SWYC race. Yachts shall record their own finish time.
- Times taken must be **corrected to GPS time** and emailed within 30 minutes of finishing. See 12.4 below.

12.4. All finishing boats shall report the following information in their email to shelly.raming@gmail.com: *Please ensure your boat name is in the subject line of the email!*

Sail #: _____, Boat Name: _____, Class: _____,

Finish Time (GPS): hr: _____ min: _____ sec: _____,

Your name and telephone number _____

13. PENALTY SYSTEM:

13.1. RRS V1, *Penalty at the Time of the Incident*, shall apply.

13.2. RRS V2, *Penalty Taken After a Race*, shall apply.

14. TIME LIMIT

14.1. For the **Butler Invitational** - Boats finishing after 18:00 hours will be scored Did Not Finish (DNF). This modifies RRS 35.

14.2. For the **Oceanside to SWYC** (both courses) - Boats finishing after 18:00 hours will be scored Did Not Finish (DNF). This modifies RRS 35.

15. PROTESTS

15.1. Protests shall be initiated in compliance with RRS 61, except as amended by these Sailing Instructions.

15.2. A boat intending to protest shall report her intentions and the boat(s) being protested to the RC boat on station upon finishing or retiring and obtain RC acknowledgment. Radio reports of protests are only accepted from boats that are retiring from the race.

- 15.3. For the Butler Invitational, protesting yachts shall lodge their written protests within one hour of the RC boat docking time which will be posted prominently in the bar and Notice Board upstairs at OYC. If the RC finish boat is not on station, finishing or retiring yachts shall lodge protests at the OYC Bar by 2000 hours the day of the race (8:00pm). Notice of protest and yachts involved including names of witnesses, if known, and the schedule of hearings will be posted on the RC Bulletin Board adjacent to the OYC Bar within 30 minutes after the protest time ends.
- 15.4. For the Oceanside to San Diego Race (Course 1), protesting yachts shall lodge their written protest by emailing SWYC Race Committee at sailorcookie@cox.net not later than 30 minutes after they reach their slip or 18:45, whichever is earlier. RC boat docking time will be posted on the RC bulletin board adjacent to the OYC Office. Notice of Protest and yachts involved and the schedule of hearings will be posted on the RC bulletin board within 30 minutes after expiration of protest time.
- 15.5. Protests will be heard in the approximate order of receipt immediately following the race or at a later date and time as coordinated by the Protest Chairman.

16. PROTEST ARBITRATION

- 16.1. Arbitration will be available according to Appendix T for breaches of rules of Part 2 where there is no damage or injury. Protests not resolved through arbitration or Request for Redress will be referred to the Protest Committee for hearing.

17. SCORING FOR EACH RACE

- 17.1. This series shall be scored as provided in the Notice of Race.
- 17.2. Each race will be scored with the Low-Point Scoring System as provided in RRS Appendix A.
- 17.3. One race is required to be completed to constitute this series.
- 17.4. This is a PHRF San Diego Annual Championship Series event. Only those yachts sailing under a PHRF San Diego Rating Certificate will have this race scored for the Annual Series.
- 17.5. PHRF Classes shall be scored with their Random Leg Course Ratings (RLC), including Area G ratings or those assigned by the OA, using time on distance.
- 17.6. Boats will enter with their PHRFSD rating if they have one. PHRF entries with only PHRF Southern California ratings will be scored using PHRF Southern California RLC ratings.
- 17.7. Identical boats will use the PHRF San Diego rating if any boat uses the PHRF San Diego rating.
- 17.8. The MBYC Butler Fleet will be scored using ratings assigned by the Organizing Authority and posted as discussed in 5.1, above.
- 17.9. SWRF, SDCA and ORC boats will start and race in their assigned PHRF classes. Their respective group scores will be extracted to create SWRF, SDCA & ORC results.

18. SCORING FOR THE SAN DIEGO COASTAL CUP

- 18.1. The scoring for the San Diego Coastal Cup will be the combination of the results of the Butler Invitational and the Oceanside to San Diego Race.
- 18.2. One race is required to be completed to constitute a series.
- 18.3. A boat's series score will be the total of her race scores.
- 18.4. Tie breakers will be decided based on Appendix 7 & 8 for combined race scores.
- 18.5. Any Yacht that changes divisions will not be considered for the San Diego Coastal Cup Results. Any Yacht Scored DNS in either Race will not be considered for the San Diego Coastal Cup Results. Any Yacht that is scored DNF will be awarded last place corrected time plus one hour for the purposes of the tiebreaker math.

19. SAFETY

- 19.1. Yachts shall comply with the Race Safety Requirements listed in the Notice of Race and Coastal Cup 2022 - Sailing Instructions

outlined below.

- 19.2. International Regulations for Preventing Collisions at Sea or government right-of-way rules shall replace Section 2 of RRS between sunset and sunrise.
- US Sailing NEARSHORE Safety Equipment is required in addition to all required United States Coast Guard boating requirements.
 - US Sailing NEARSHORE Requirements can be found here:
https://www.ussailing.org/wp-content/uploads/2018/03/US_SER_2018.0_Categories.pdf
- 19.3. The **Race Committee (RC) shall monitor VHF Channels 16 & 68**. Each yacht shall monitor VHF Channel 68 from the time the boat checks in with the RC until clear of the start line. Each yacht shall monitor VHF Channel 16 from that point until she finishes. All race related communication prior to the last start will take place on VHF Channel 68. Should a yacht need to contact RC after the start, the yacht should hail the RC on VHF Channel 16; RC will then acknowledge and request the hailing yacht switch and answer on VHF Channel 68 for all non-emergency communication.

20. PRIZES

- 20.1. For the **San Diego Pursuit to Mission Bay** – the membership of MBYC invites all participants to enjoy the hospitality of the MBYC Clubhouse after the race on Friday evening. Trophies for winners of the SDPtoMB will be awarded at MBYC Bar area as soon as possible following the day's racing.
- 20.2. For the **Butler Invitational** – the membership of OYC invites all participants to enjoy the hospitality of the OYC Clubhouse after the race on Saturday. Trophies for Division winners of the Butler will be awarded at OYC bar area as soon as possible following the day's racing.
- 20.3. For the **Oceanside to San Diego Race and the San Diego Coastal Cup** – the membership of SWYC invites all participants to enjoy the hospitality of the SWYC clubhouse after the race on Sunday. Trophies will be awarded at the SWYC Bar area as soon as possible following the day's racing, approximately 19:00.

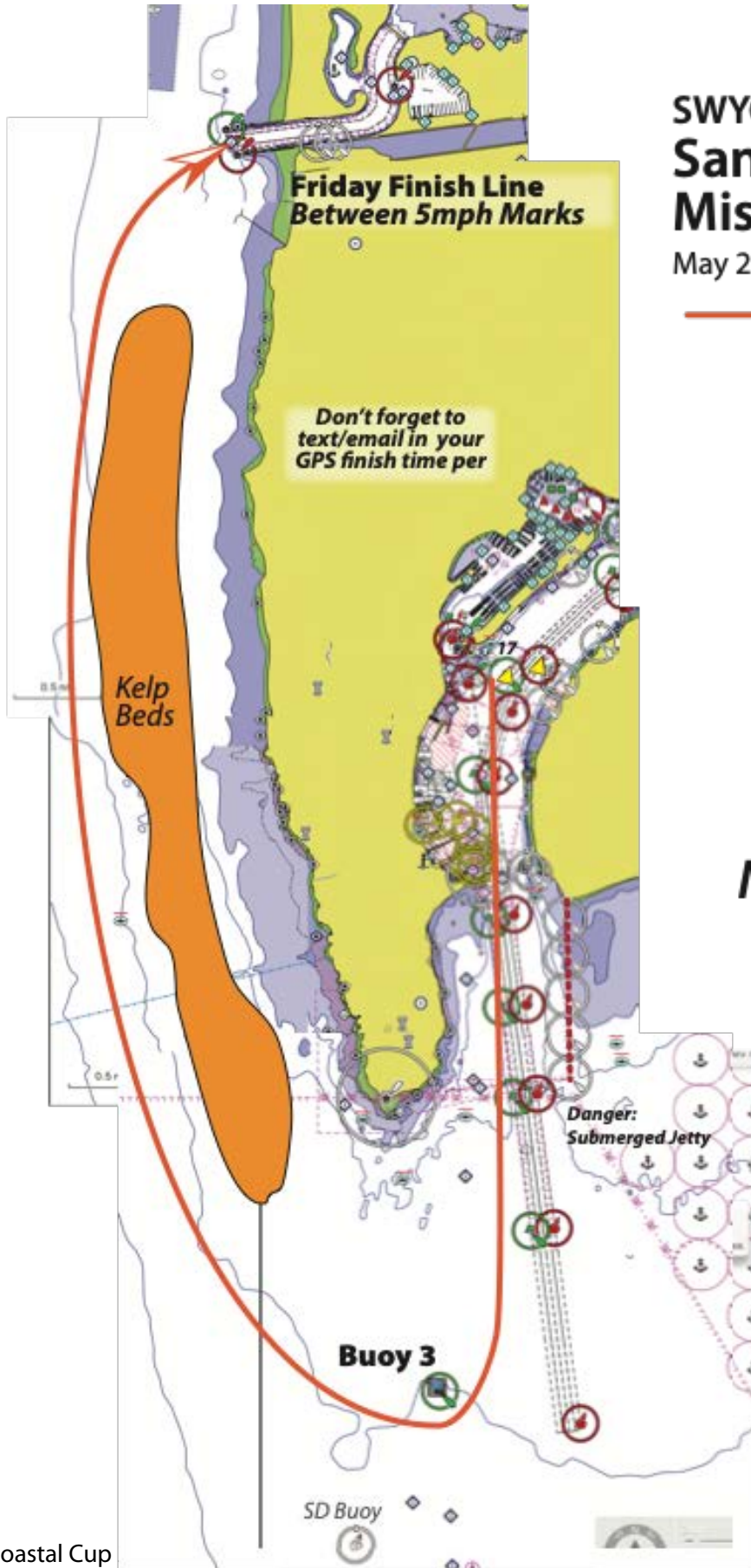
21. DISCLAIMER OF LIABILITY

- 21.1. See RRS rule 3, decision to race. The organizing authority will not accept any liability for material damage or personal injury or death sustained in conjunction with or prior to, during, or after the regatta. Para 21

22. FURTHER INFORMATION

- 22.1. *Do we need anything in this section*

Race Detail for San Diego Pursuit to Mission Bay



SWYC & MBYC San Diego Pursuit to Mission Bay

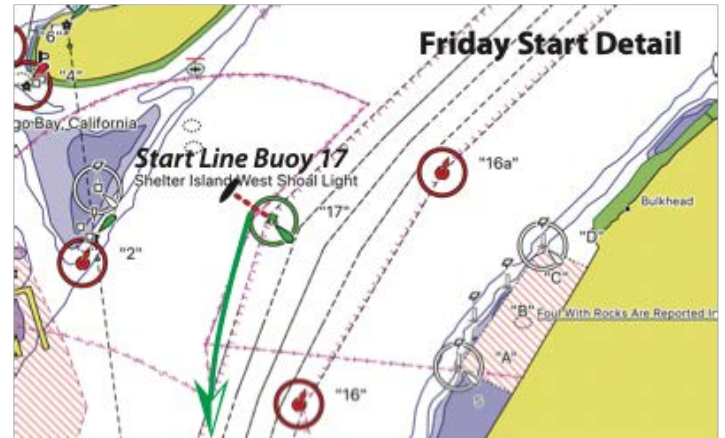
May 27th, 2022

 **Course**
All boats

*See details
on page 2*

Not for Navigation

Finish Detail for San Diego Pursuit to Mission Bay Race



SWYC & MBYC
San Diego Pursuit to
Mission Bay Race
May 27th, 2022

Start/Finish & Post-Race Details
Raftup at Mariner's Cove
MBYC to provide shuttle service
from Mariner's Cove to MBYC

Don't forget to text/email in
your GPS finish time per SI's



Coastal Cup Courses

Memorial Day Weekend Races

Butler & OCN to SWYC Detail

May 27th, 28th & 29th 2022

Pursuit Hosts: SWYC & MBYC

Northbound Hosts: MBYC & OYC

Southbound Hosts: OYC & SWYC

For illustration purposes only - not to scale/routes depicted are informative only. Refer to official race documents for details.

Butler Course - Course for All Classes
 Start-1nm Mark to starboard- Finish near O'side Pier

O'side-to-SWYC Course 1
 O'side Pier Start - SD Buoy to port - Finish west of Buoy 5 aligned with Buoy 6

O'side-to-SWYC Course 2
 O'side Pier Start - Finish adacent to Buoy 3

Note: there is no restriction on going through the kelp bed at racer's discretion and therefore do not constitute a 'mark'

Note: there is no restriction on going through the kelp bed at racer's discretion and therefore do not constitute a 'mark'

Butler 1nm Windward Mark

Pt Loma Kelp Beds

Buoy 3

SD Buoy

O2SWYC Finish West of Buoy 5

Butler Start

La Jolla Kelp Beds

Mission Bay

San Diego Bay

Del Mar

Encinitas

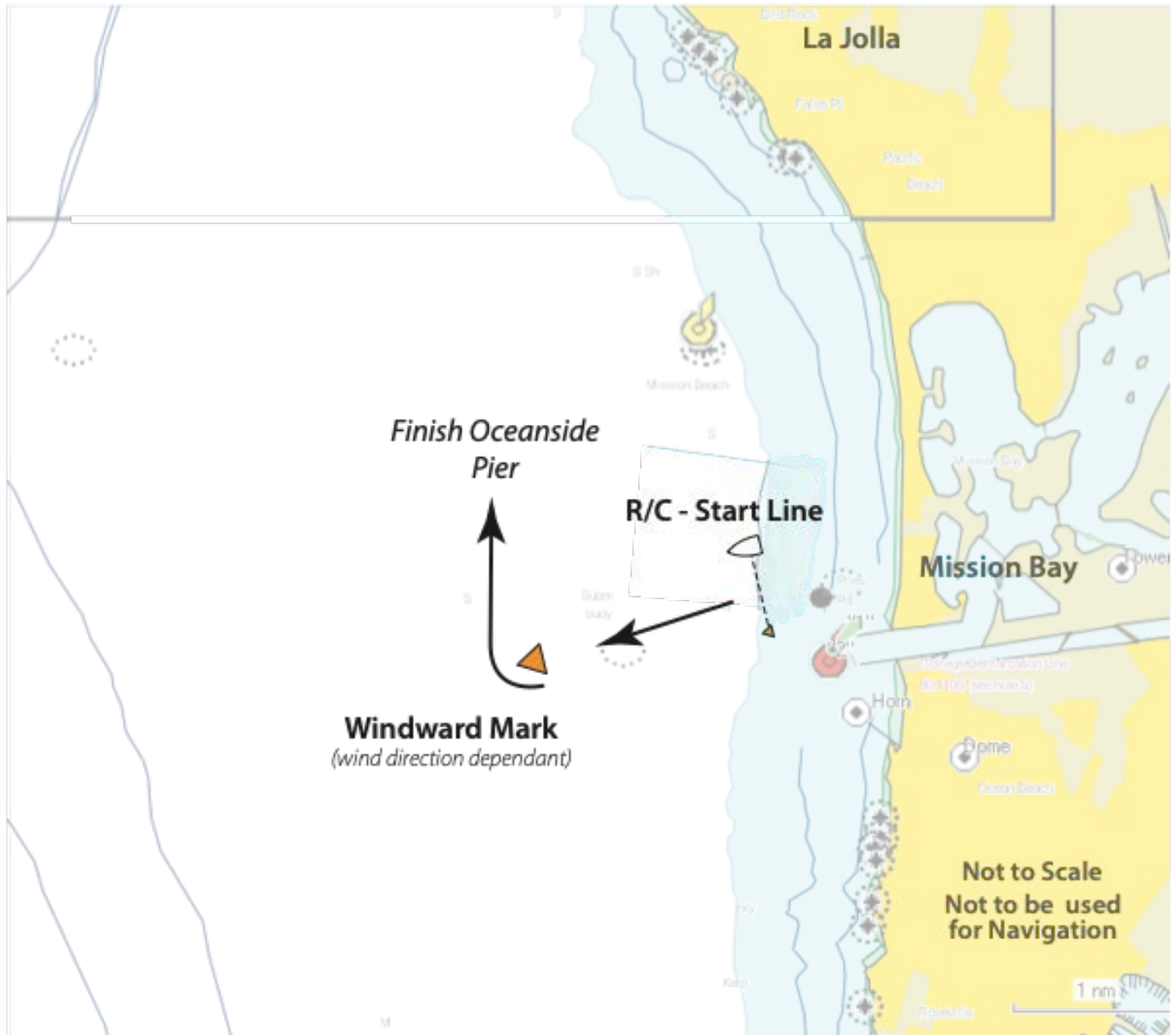
Carlsbad

Oceanside Harbor

Pier

Butler Finish/
O2SWYC Start

- Start Area Detail -
2022 Butler Race
Mission Bay to Oceanside
MBYC • OYC



- Finish Detail -
Butler Regatta
Mission Bay to Oceanside
MBYC • OYC





Coastal Cup Courses

Memorial Day Weekend Races

OCN to SWYC Finish Detail

May 29th 2022

Pursuit Hosts: SWYC & MBYC
Northbound Hosts: MBYC & OYC
Southbound Hosts: OYC & SWYC

