

Lake Murray Yacht Racing Association

Saturday, 3 June 2023 Overnight Race

SAILING INSTRUCTIONS (SIs)

1 RULES

- 1.1 The event is governed by the rules as defined in *The Racing Rules of Sailing (RRS) for 2021-2024* except as modified by these SI and by the Race Committee (RC) on the water per RRS 41(c) and 90.2 (c)
- 1.2 **Registration:** All skippers must have filled out a registration form on Regatta Network (RN) (http://www.lmyra.org/regatta_network.html) and paid the registration fee, and have declared on that form whether racing spinnaker or non-spinnaker by 5 pm (1700) Wednesday, 31st May, 2023.
- 1.3 **Laws:** All boats shall be in compliance with SC Dept of Natural Resources and all federal laws or face disqualification. This includes working lights and approved life jackets (PFD).
- 1.4 **Sail Numbers:** All mainsails must have the same number as the boat is registered. Failure to comply will result in DSQ without a hearing.
- 1.5 **Marks:** Marks will be treated as obstructions during rounding's throughout the race as detailed in SI 11.
- 1.6 **Safety:** Each skipper is responsible for the safety of his/her crew. Boats shall comply with all applicable laws regarding required items of safety including, but not limited to wearable approved PFD for each person on board. A throwable device must be accessible for instant use. It shall be the responsibility of individual skippers and crew to decide whether or not to wear life jackets. However, it is highly recommended by the Organizers to wear PFDs at all times especially at night when it is most difficult for a fast-moving boat to immediately turn on its motor, turn around, drop sails and look for the crew in the water.

Race Committee Signal Vessel (RC SV), Safety Vessels, Rounding Mark Vessels (RMV) and the Columbia Sailing Club (CSC) will be using and monitoring VHF Channel 66 (Ch 66). All competitors will need to have a VHF radio tuned to Ch 66 to receive RC information. In addition, Channel 16 should be scanned to be able to "give all possible help to any person or vessel in danger (RRS 1.1 – HELPING THOSE IN DANGER).

Addendum A to the SI's is the CSC "*Emergency Response Guideline for Care of Sick or Injured Persons During a Race.*" All skippers and crew should read and understand the document and know the location of the document on their boat.

The safety vessel(s) will attempt to stay in the Spence Island area during the race and will respond to calls for assistance. If a serious situation (e. g.: illness, hypothermia, injury, etc.) occurs the boat, if it can, should promptly call both RC and 911 so EMT's can start to come to a nearby designated ramp to receive the patient. Addendums A and the Overnight Race Course Map "B" show the dock/ramp locations. Addendum A has the GPS coordinates for the dock/ramp locations. Stay on the radio so a safety vessel can find you and assist.

In the event of thunderstorms before the start of the race, RC can abandon the race 1 hour before start time without going out to the course. You can call the CSC at 781-4518 or LMYRA Commodore David Krausz at 803-450-4604 one hour before the start of the race to find out if the race will be held. RC will notify skip-pers on Ch 66 if they are not going to start a race (no date for a makeup race will be scheduled). The race will be abandoned during the race if a storm warning goes into effect for Richland, Lexington, Newberry or Saluda counties affecting areas of Lake Murray. An alert or watch is not the same as a warning.

If you must drop out of the race before finishing, you shall notify the RC or a mark vessel by radio on Ch 66 or call CSC Command Centre at {803-781-4518} and re-lay your status.

2 CHANGES TO SI

- 2.1** Any change to the SI will be posted on RN before 0900 on the day it will take effect.
- 2.2** Changes to a SI may be made on the water by the RC using Ch 66.

3 COMMUNICATIONS WITH COMPETITORS

- 3.1** Notices to competitors will be posted on the official notice board (ONB) located at the CSC entrance and on RN.
- 3.2** On the water, the RC intends to monitor and communicate with competitors on Ch 66). Failure to receive a RC communication is not grounds for redress.

4 CODE OF CONDUCT Competitors and any support persons shall comply with reasonable requests from race officials.

5 SIGNALS MADE ASHORE Signals made ashore will be displayed at CSC Yardarm and announced over on Ch 66.

6 RACE SCHEDULE

- 6.1** One pursuit race is scheduled for 3 June 2023. Pursuit start timing is scheduled to start at 1855 using RRS 26.

6.2 No further races are scheduled.

7 CLASS FLAG The Class Flag is the LMYRA pennant.

8 RACING AREA Lake Murray, South Carolina

9 COURSES

9.1 The diagram of the course to be sailed is shown in attached course map. The mapped diagram shows the course, including the approximate angles between legs, the order in which marks are to be passed, and the side on which each mark is to be left. The course length is 32.5 miles.

9.2 Mark A, the first mark of the course, is to be rounded to starboard. After rounding Mark A for the first time, all further mark rounding's will be to port.

9.3 Any boat sailing between Goat Island and the mainland and between Counts Island and the mainland will result in DSQ for that boat if observed or confirmed by only the RC.

9.4 The Doolittle (aka Lunch) Island and the three Spence Islands can be passed on either side.

9.5 Competitors should know locations of "shoals." Some, but not all, are shown and their coordinates listed on Addendum B.

9.6 Any course change with new start times will be posted on RN before 0900 on the day it will take effect and also announced on Ch 66 beginning at 1700.

9.7 Distance between start, marks and finish:

From:		To:		Statute Miles	Total Dist.
Start	N 34° 03.78' W 81° 13.67'	Mark A	N 34° 02.22' W 81° 13.96'	1.9	1.9
Mark A	N 34° 02.22' W 81° 13.96'	Mark B	N 34° 05.27' W 81° 17.46'	4.9	6.8
Mark B	N 34° 05.27' W 81° 17.46'	Mark D	N 34° 02.48' W 81° 20.17'	4.1	10.9
Mark D	N 34° 02.48' W 81° 20.17'	Mark A	N 34° 02.22' W 81° 13.96'	6.1	17.0
Mark A	N 34° 02.22' W 81° 13.96'	Mark B	N 34° 05.27' W 81° 17.46'	4.9	21.9
Mark B	N 34° 05.27'	Mark D	N 34° 02.48'	4.1	26.0

W 81° 17.46'

W 81° 20.17'

Mark D	N 34° 02.48'	Finish	N 34° 03.82'	6.5	32.5
	W 81° 20.17'		W 81° 13.66'		

9.8 The GPS coordinates of the Lake Murray navigation lights can be found at: <http://lakemurrayfun.com/markers.shtml>

10 MARKS

- 10.1 Marks are anchored vessels at locations A, B & D named "Rounding Mark Vessel(s)(RMV) as shown on Addendum B.
- 10.2 Anchored RMVs are the rounding marks but will be designated as obstructions for this race.
- 10.3 Each RMV at marks A, B & D will have a search light and, if asked on Ch 66, the RMV will attempt to shine the light into the sky for at least 3 seconds and then proceed to do a sweeping motion just above the water back to the direction of the last mark for at least 5 seconds. RMV's will be anchored at the designated GPS locations (SI 9.7). Using a personal GPS with the RMV's location coordinates entered as "way points" will make finding a RMV easier.
- 10.4 Each boat shall attempt to call out their sail number to the RMV located at Marks A, B, and D as the mark is rounded. The RMV's will record the sail number and the time and report using Ch 66 to the CSC Command Centre who will track the competitors progress throughout the race.

11 OBSTRUCTIONS

- 11.1 ***The RMVs being used as rounding marks shall be treated as "Obstructions" (RSS 19: ROOM TO PASS AN OBSTRUCTION, RRS 20: ROOM TO TACK AT AN OBSTRUCTION).***
- 11.2 ***A competitor that contacts a RMV (includes anchor line) will be DSQ without a hearing.*** Give RMV's plenty of room and remember several RMVs may be rafted up or tied to a RMV stern.

12 THE START

- 12.1 "Competitors Overnight Race Starting Sequence List" for the competitors will be added to the SI posted on RN as "Addendum C" 12 hours after registration closes on 8 June 2022 at 1700. Times will be based on time on distance using the following formula: (Base PHRF - Adjusted PHRF) x Statute Miles x 1.16
- 12.2 "Checking in" for the race will begin at 1730. Boats with lengthy start times need only to check in 30 minutes before their intended starting time. The location for "checking in" is at the south end of the eastern CSC dock (N 34 03.81, W 81 13.68 "L" flag may be posted at that location). A RC member on the dock will acknowledge the check-in and will be able to confirm, if requested, the start time

for the checked in boat.

The onus is on each skipper to be acknowledged by the RC as having checked in properly. Failure to check in may result in not being scored.

Keep clear of boats starting earlier by keeping clear of the active starting line by 100 yards. Boats waiting to start can dock at the CSC docks. Boats should enter the starting area within 5 minutes of their start.

After 1901 all competitors are technically racing so any infractions of RRS Part 2-WHEN BOATS MEET is in effect.

- 12.3** The starting area will be approximately 250 yards directly south of the CSC docks.
- 12.4** The start line is between the RCSV orange flag and a yellow tetrahedron.
- 12.5** Races will be started using RRS 26. Beginning with a gather horn at 1854 and then the class flag is raised at 1855 to start the RRS 26 sequence for a pursuit timing start at 1900 (7 PM DST). The RC will attempt to give the countdown on Ch 66.
- 12.6** The RCSV will attempt to sound a horn when it is time for a competitor to begin racing. If any part of a boat's hull is on the course side of the starting line at her start time, and she is identified, the RC will attempt to hail her sail number using Ch 66 or, if appropriate, the RCSV hailer. RRS 29.1 "Individual Recall" is changed such that no flag X will be raised and no sound will be made. Failure to hail her number, failure of her to hear such a hail, or the order in which boats are hailed will not be grounds for a request for redress. This changes RRS 62.1(a). ***A boat can exonerate itself by returning and clearing the start line and then starting properly.***
- 12.7** A boat that does not start within 20 minutes after her starting signal will be scored Did Not Start without a hearing. This changes RRS A5.1 and A5.2.
- 13 CHANGE OF THE NEXT LEG OF THE COURSE** No change of course will be made during the race except for shortening the course.
- 14 THE FINISH**
- 14.1** The finish line shall be between the RCSV displaying an orange flag and a yellow tetrahedron. The RCSV will be docked at the south end of the eastern CSC dock. The other end of the finish line is a yellow tetrahedron.
- 14.2** The course may be shortened to a rounding mark of the course.
- 14.3** If the RC is absent when a boat finishes, she should report her finishing time, and her position in relation to nearby identified boats, to the RC at the first reasonable opportunity.

15 PENALTY SYSTEM

- 15.1** The Two-Turns Penalty is replaced by the One-Turn Penalty.
- 15.2** All protests should be filed by noon (1200 DST) Monday, 5 June 2023 by handing to the LMYRA Protest Chairman Steve Szymanski (803 781 5334).

16 TIME LIMITS

- 16.1** The time limit for boats to stop racing is 2 hours after the first boat finishes in each division.
- 16.2** If no boat finishes in 10 hours the race may be abandoned by the RC and finishes assigned. See SI 17.2 for scoring procedure.

17 SCORING

- 17.1** If the full race is sailed to completion, scoring will be the order of finish for each division. The finish times for all boats will be recorded and posted on RN.
- 17.2** If the race course is about to be shortened or abandoned, the RC on Ch 66 will frequently announce a "shorten course stop time" when racing will stop. At that time all competitors shall immediately stop and lower their sails and note their location (GPS coordinates, preferred) and list the position of identified competitors/boats in their vicinity. The data from each boat will be recorded and the finish positions will be calculated by the RC according to the distance actually sailed. A boats data can be transmitted by Ch 66 or given to the RC at the CSC Command Center. Failure to give data to the RC by Sunday noon (1200 DST, 19 June 2022 will result in being scored DNF.

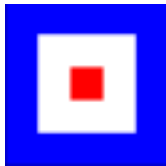
- 18 Radio Communications** All boats and vessels shall have a VHF radios to monitor and transmit Ch 66 and Ch 16. All boats and vessels should scan both Ch 66 and 16. Competitors, RMV's and RC will transmit info on Ch 66. Use other communication channels for non-race related talk.

- 19 PRIZES** Prizes will be given to the top three boats in spinnaker and non-spinnaker divisions.

20 RISK STATEMENT

RRS 3 states: 'The responsibility for a boat's decision to participate in a race or to continue to race is hers alone.' By participating in this event each competitor agrees and acknowledges that sailing is a potentially dangerous activity with inherent risks. These risks include strong winds and rough seas, sudden changes in weather, failure of equipment, boat handling errors, poor seamanship by other boats, loss of balance on an unstable platform and fatigue resulting in increased risk of injury. **Inherent in the sport of sailing is the risk of permanent, catastrophic injury or death by drowning, trauma, hypothermia or other causes.**

21 INSURANCE Each participating boat shall be insured with valid third-party liability insurance with a minimum cover of \$300,000 per incident or the equivalent.

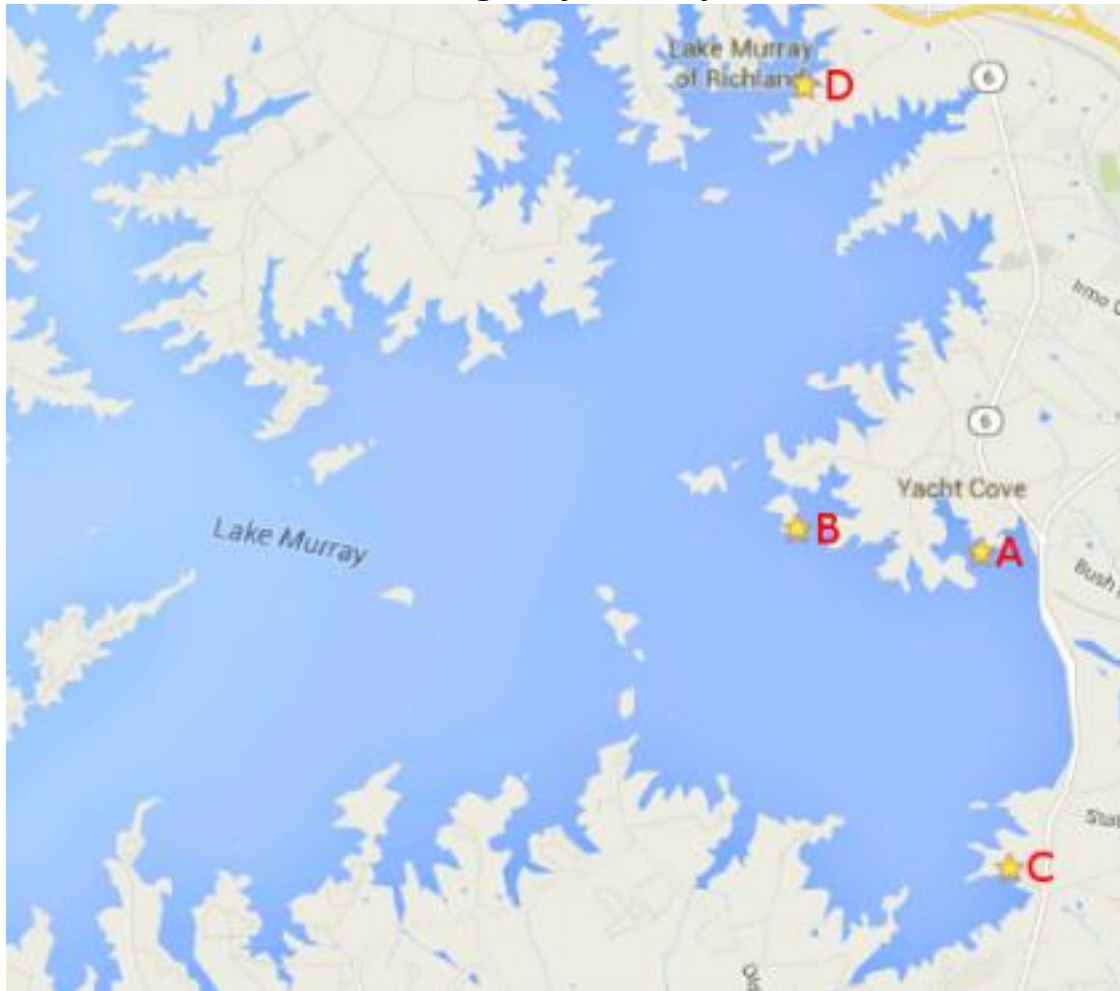


Emergency Response Guideline for Care of Sick or Injured Persons During a Race

1. Follow first aid protocols and render assistance
 - a. Prevent additional injuries
 - b. Remove persons from the water
 - c. Open airway
 - d. Stop bleeding
 - e. Perform CPR
 - f. Treat for hypothermia
2. Call the Race Committee (RC) vessel on VHF as quickly as possible and report the situation. **If no immediate response from RC then call 911 and then keep calling RC.**
3. RC will immediately send the mark vessel with medical equipment to the location. The mark vessel will assist with emergency care and transport sick or injured persons if indicated.
4. RC will call 911 immediately. Assistance can be cancelled if not needed.
 - a. Ensure that you have reached the Lexington or Richland 911 center depending upon the closest pick-up location (see the map). For a rescue response to the location on the water ask for the Lexington center.
 - b. Describe the emergency.
 - c. If requesting on-water rescue help, provide the location of injured person(s) and a description of the boats involved.
 - d. State the location where patients will be brought ashore to meet an ambulance (see the map).
 - e. Describe the symptoms and the age, gender and number of patients.
 - f. Give your name and call back number.
 - g. Stay on the call to ensure that the dispatcher has all of the needed information.
5. Call the number on the map for the emergency pick-up location to have someone meet the ambulance. If the pickup location is CSC, ensure that the gate is open.
6. Transfer patients to the care of emergency responders
7. Inform key people: Commodore: Crawford Milling (803) 667-7679
Sailing Director: Brandon Gerrald and family of injured.
8. Complete an incident report (Forms in Sailing Director Office)

[SEE OTHER SIDE ⇒](#)

Medical Emergency Pick-Up Locations



- A Columbia Sailing Club**
292 Shuler Road, Columbia, SC 29212 803-781-4518
N 34.063778°, W 81.229500° [34 03.83 N, 81 13.77 W]
- B Pine Island Club**
150 Pine Island Road, Columbia, SC 29212 803-781-6491
N 34.066471°, W 81.254967° [34 03.99 N, 81 15.30 W]
- C Jakes Landing**
220 Jakes Landing Road, Lexington, SC 29072 803-359-9268
N 34.027576°, W 81.225601° [34 01.65 N, 81 13.54 W]
- D Liberty Tap Room – Lake Murray Marina**
1600 Marina Road, Irmo, SC 29063 803-781-1585
N 34.117173°, W 81.253959° [34 07.03 N, 81 15.24 W]

Safety Equipment on all CSC vessels:

- First aid kit • Two thermal blankets
- * Swim ladder

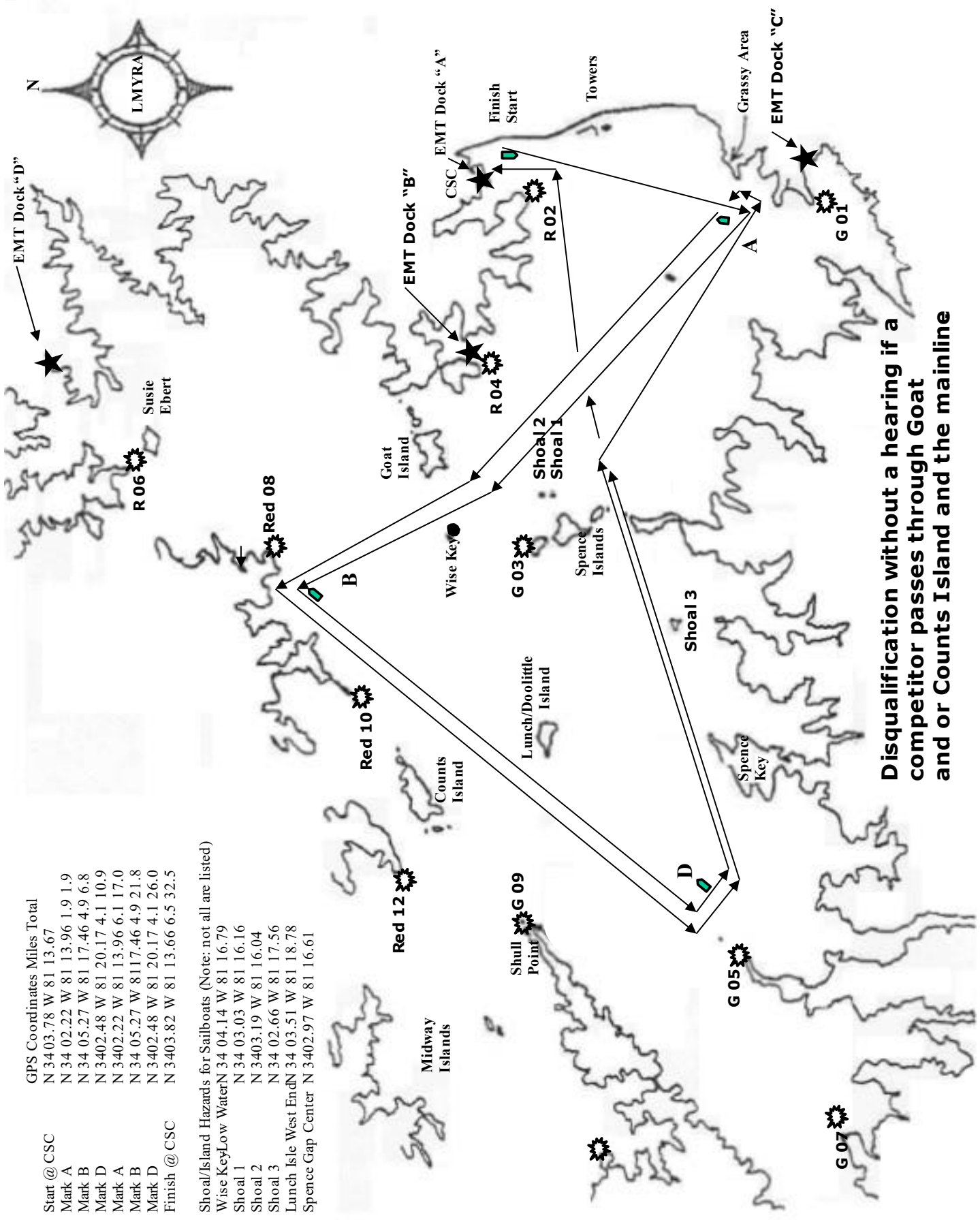
[SEE OTHER SIDE⇒](#)

Start @ CSC
 Mark A
 Mark B
 Mark D
 Mark A
 Mark B
 Mark D
 Finish @ CSC

GPS Coordinates Miles Total
 N 34 03.78 W 81 13.67
 N 34 02.22 W 81 13.96 1.9 1.9
 N 34 05.27 W 81 17.46 4.9 6.8
 N 3402.48 W 81 20.17 4.1 10.9
 N 3402.22 W 81 13.96 6.1 17.0
 N 34 05.27 W 81 17.46 4.9 21.8
 N 3402.48 W 81 20.17 4.1 26.0
 N 3403.82 W 81 13.66 6.5 32.5

Shoal/Island Hazards for Sailboats (Note: not all are listed)

Wise Key Low Water N 34 04.14 W 81 16.79
 Shoal 1 N 34 03.03 W 81 16.16
 Shoal 2 N 3403.19 W 81 16.04
 Shoal 3 N 34 02.66 W 81 17.56
 Lunch Isle West End N 34 03.51 W 81 18.78
 Spence Gap Center N 3402.97 W 81 16.61



Disqualification without a hearing if a competitor passes through Goat and or Counts Island and the mainline

Addendum C

Sample Only

Official list for 18 June Overnight Race will be issued within 12 hours after registration closes at 5 PM (1700 DST) Wednesday, 15th June.

Overnight Race Starting Sequence List 6-17-2011

Race Date:	17-Jun-11		
Distance:	Statute Miles	32.5	Base PHRF 270

	Sail No.	Boat Type	Skipper	Boat Name	PHRF Rating	Start Time
1	50	Tommy Smith	Catalina 22	Not Guilty	270	0:00:00
2	7589	Steve Mikeal	Catalina 22		270	0:00:00
3	700	David Mahrer	SJ-21	Water Raptor	264	0:03:46
4	2220	Curtis Rhodes	SJ-21	The Whim	264	0:03:46
5	795	Curt Rone	Helms 24	Crackerjack	261	0:05:39
6	880	Dan Ramage	Helms 24	Badger	261	0:05:39
7		Michael Mayfield	Hunter 27	INFINITY	249	Scratched
8	651	Bob Hollaway	Ranger 23		243	0:16:58
9	151	Gary Dowdey	Mirage 5.5	Illusion	240	0:18:51
10	1085	Richard Dommel	SJ-21	White Knuckles	222	0:30:10
11	5376	Chuck Henderson	Catalina 25	Pegasus	222	0:30:10
12	3391	Jan Jernigan	Beneteau First 26	Partners	213	0:35:49
13	5160	Fred Piehl	Catalina 27	Sweet Tea	213	0:35:49
14	5081	Will Haltiwanger	Catalina 27	Cygnets	210	0:37:42
15		David Oliver	Creaklock 34	Sugar Magnolia	210	0:37:42
16	81	Stanton Adkins	Pearson 28	Pegasus	207	0:39:35
17	30	Tom Militello	Helms 30	Skillet	204	0:41:28
18	5505	Stephen Szymanski	Catalina 30	Beach Music	204	0:41:28
19	318	Brad Anderson	R-29	BUTTERFACE	189	0:50:54
20		David Desseyn	Hunter 340	Wilana	189	0:50:54
21		Mac Smith	Simpler Times	Beneteau Oceanis 351	183	0:54:40
22	106	Milledge Pitts	Nonsuch 30	Spirit	180	0:56:33
23	52	Joe Waters	Mirage 235	Birthday Party	162	1:07:52
24	57525	Steven Cook	O'Day 35	Knot Again	162	1:07:52
25	380	Chris Robnett	S2-7.9	Steadfast	138	1:22:56
26	555	Charles Bumgardner	J-24	Mistress	138	1:22:56
27	1729	Hootie Bushardt	J-24	Gray Fox	138	1:22:56
28	3687	James Gray	J-24	Winsome	138	1:22:56
29	105	Danny Robinson	Colgate 26	Production	132	Scratched
30	84	Frank McKinnon	Sabre 36	Calypso	120	1:34:15
34	2022					

