

BUZZELLI MULTIHULL REGATTA & NACRA 15 NORTH AMERICANS

Sailing Instructions Large Boat Course

The notation '[NP]' in a rule of the sailing instructions (SIs) means that a boat may not *protest* another boat for breaking this rule. This changes RRS 60.1(a).

1. RULES

The regatta will be governed by the *rules* as defined in *The Racing Rules of Sailing*, the West Florida PHRF (WFPHRF) Class Rules and applicable One-Design Class Rules.

2. COMMUNICATIONS WITH COMPETITORS

2.1 Notices to competitors will be posted on the official notice board located in the Squadron pavilion on the north side of the club.

2.2 On the water, the race committee intends to monitor and communicate with competitors on VHF channel 69.

2.3 While racing, except in an emergency, a boat shall not make voice or data transmissions and shall not receive voice or data communication that is not available to all boats.

3. CHANGES TO SAILING INSTRUCTIONS

Any change to the sailing instructions will be posted before 0900 on the day it will take effect, except that any change to the schedule of races will be posted by 1900 on the day before it will take effect.

4. SIGNALS MADE ASHORE

4.1. Signals made ashore will be displayed at the flagpole in front of the clubhouse.

4.2. When flag AP is displayed ashore, '1 minute' is replaced by 'not less than 60 minutes' in the race signal AP.

5. SCHEDULE

Day	Time	
Thurs	1800 - 1900	Registration all fleets

Fri	0830 - 0900	Registration all sailors
	1000	Competitors' Meeting
	1250	Warning Signal – 1 st race
Sat	1050	Warning Signal- 1 st race
Sun	0950	Warning Signal- 1 st race
	1500	No Warning after this time

6. CLASS FLAGS

The class flags are described in Attachment I.

7. RACING AREA

Attachment I shows the location of the course racing areas.

8. THE COURSES

8.1 Gulf Long Distance Race - Attachment II shows the approximate location of the marks and their descriptions.

8.2 Course Races - The diagrams in Attachment III show the courses, including the approximate angles between legs and the order in which marks are to be passed and the side on which the mark is to be left.

9. MARKS

Marks are described in Attachment I.

10. THE START and THE FINISH

10.1. Gulf Long Distance Race (Friday only) – Start area will be west of New Pass in the Gulf of Mexico. The starting line and finishing line will be between a staff displaying an orange flag on the race committee signal boat and an inflatable mark located near the New Pass Government mark “NP”.

10.2. Course Races – The starting line will be between a staff displaying an orange flag and the start mark. The finishing line will be between a staff displaying an orange flag and the finish mark.

10.3.[DP] Boats whose warning signal has not been made shall avoid the starting area during the starting sequence for other races.

10.4. A boat starting later than 4 minutes after her starting signal will be scored Did Not Start without a hearing. This changes rule A5.1 and A5.2.

11. CHANGE OF THE NEXT LEG OF THE COURSE

- 11.1. To change the next leg of the course, the race committee will lay a new mark (or move the finishing line) and remove the original mark as soon as practicable.
- 11.2. In the event of the next leg change of the course, mark 1a will not be relocated. All classes shall round the new mark 1 leaving it to port.

12. PENALTY SYSTEM

- 12.1. Rule 44.1 is changed so that the Two-Turns Penalty is replaced by One-Turn Penalty.

13. TIME LIMIT

- 13.1. Gulf Long Distance Race – 1700 Friday October 13.
- 13.2. Course Races - Boats failing to finish within 30 minutes after the first boat in their class sails the course and finishes will be scored DNF without a hearing. This changes RRS 35, A5.1 and A5.2.

14. HEARING REQUESTS

- 14.1. Protest forms are available outside the Club Office. Protests and requests for redress shall be delivered there within 60 minutes after the race committee signal boat docks. The docking time will be posted on the Official Notice Board 14.2. Notices will be posted no later than 30 minutes after the protest time limit to inform competitors of hearings in which they are parties or named as witnesses. Hearings will be held in the club office beginning at the time posted.
- 14.3. Notices of protests by the race committee, technical committee or protest committee will be posted to inform boats under rule 61.1(b).

15. SCORING

- 15.1. The Low-Point Scoring System of Appendix A will apply except no race will be excluded. This changes rule A.2.
- 15.2. One race is required to be completed to constitute a series.
- 15.3. Rating systems used will be PHRF (time-on distance). If PHRF no rating is available, the Organizing Authority may in its sole discretion assign a provisional rating for this event only.
- 15.4. Scoring for the 3-day sailors is based on an aggregate of all races sailed Friday through Sunday.

16. [DP][NP] SAFETY REGULATIONS

- 16.1. Check-Out and Check-In: Boats must check in and receive acknowledgement from the race committee before the first race of each day.
- 16.2. A boat that retires from a race shall notify the race committee as soon as possible.

17. EQUIPMENT AND MEASUREMENT CHECKS

A boat or equipment may be inspected at any time for compliance with the class rules and sailing instructions.

18. PRIZES

- 19.1. Prizes will be given to each boat placing first, second and third in each class with five or more entries; to those placing first and second in classes with four entries and to the first place competitor in classes with three entries.
- 19.2. The 'Robert Anthony Buzzelli Perpetual Trophy' will be awarded.
- 19.3. Other prizes may be awarded.

20. RISK STATEMENT

RRS 3 states: "The responsibility for a boat's decision to participate in a race or to continue to race is hers alone.' By participating in this event each competitor agrees and acknowledges that sailing is a potentially dangerous activity with inherent risks. These risks include strong winds and rough seas, sudden changes in weather, failure of equipment, boat handling errors, poor seamanship by other boats, loss of balance on an unstable platform and fatigue resulting in increased risk of injury. t

21. INSURANCE

Each participating boat shall be insured with valid third-party liability insurance with a minimum cover of \$300,00 USD per incident or the equivalent. The organizing authority does not accept any responsibility for verifying that a boat has third-party liability insurance.

Attachment I – Sailing Areas, Mark Description, Class Flags Race Area 2

Race Area

Course		Mark Descriptions	Class Flags
Gulf Long Distance Friday		For Gulf Long Distance Race -See Attachment II Start, finish mark –	PHRF High/Low Multihull – Numeral pennant 2
Race Area 1 PERF high/low Nacra 15s		Large Course marks -Pink Start/ finish mark – yellow Nacra Weather mark – orange Tetrahedrons Change mark large- Green Tetrahedron Gate marks- red Change mark Nacra- yellow	PHRF High/Low Multihull – Numeral pennant 2 Nacra 15- Class flag

Attachment II – Gulf Long Distance Race Marks. Description and Approximate GPS Waypoints

- **The Official Course will be announced at Skippers meeting.**

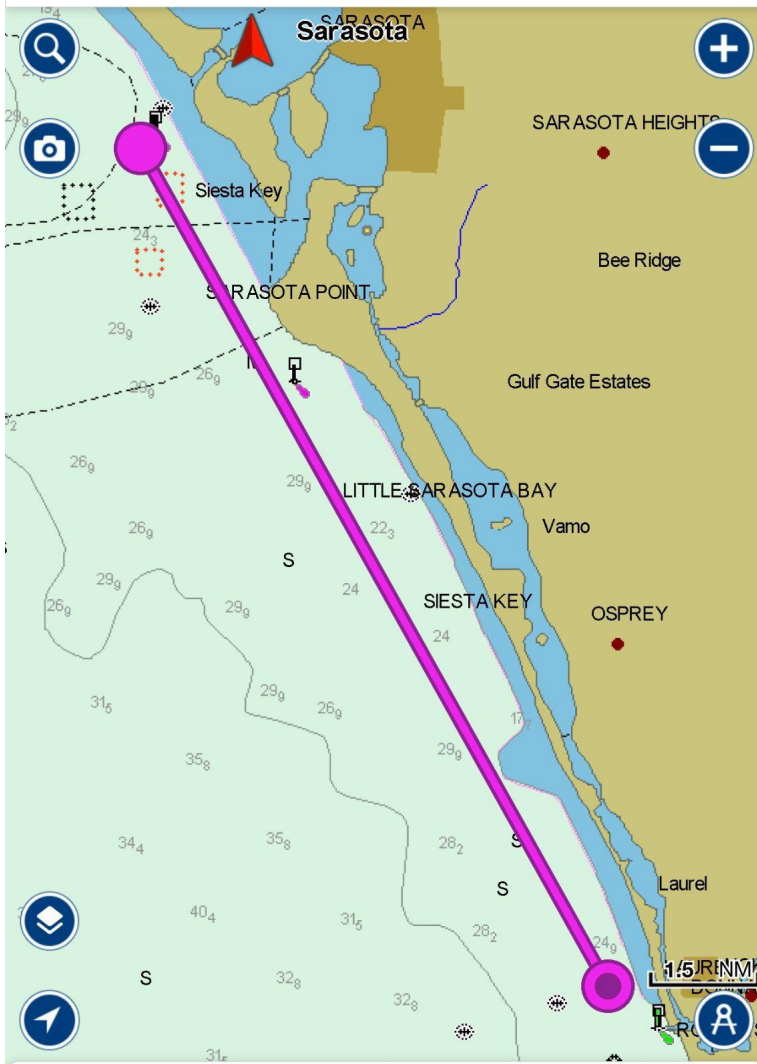
Course 1

Start/finish will be Near new Pass Mark Mark on pile, words Danger Shoaling on sign
Orange Tetrahedron Floating inflatable mark approx ½ miles north west from Venice Pier.

Exact coordinates below

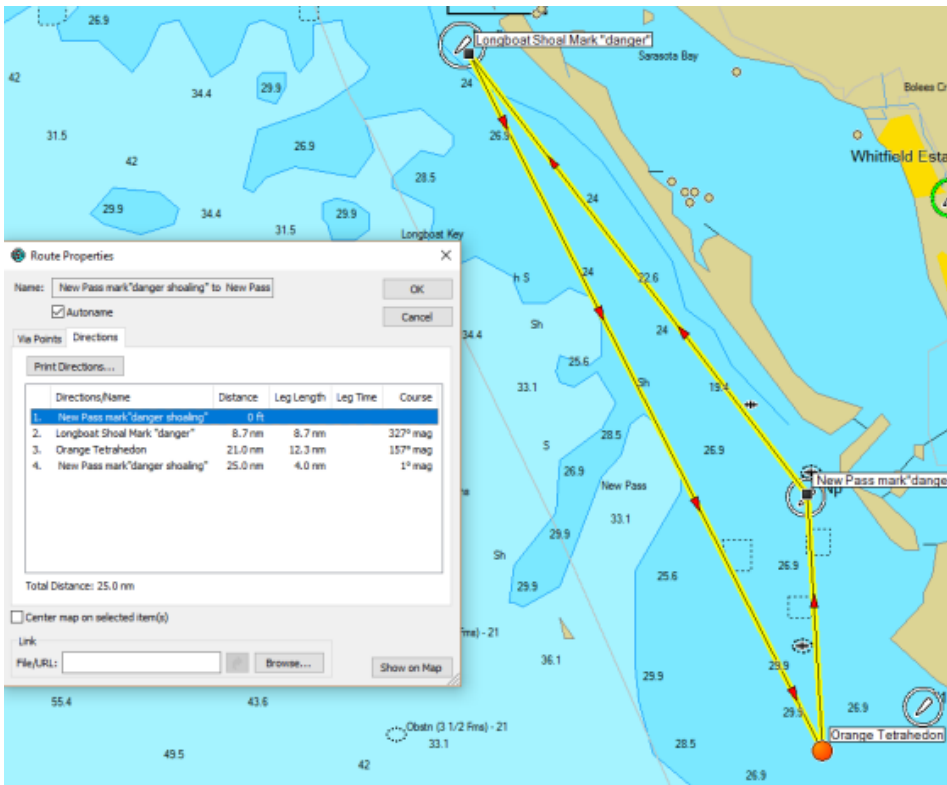
27°18.749'N • 82°36.089'W

27°7.355'N • 82°28.991'W



Length
13.0 NM

Course 2



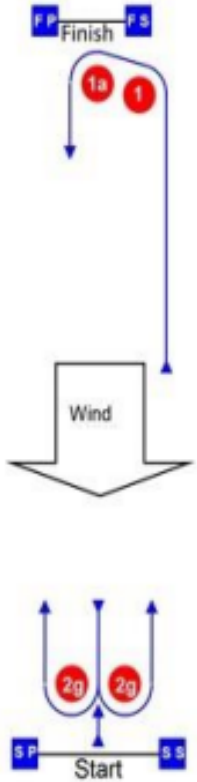
Attachment III – Course Illustrations

COURSE

	Windward leeward with offset, gate and mid start line	
	Possible courses	
	Classes	Mark Rounding Order
	M1	Start-1-1a-2s/2p-Finish
	M2	Start-1-1a-2s/2p-1-1a-2s/2p-Finish
M3	Start-1-1a-2s/2p-1-1a-2s/2p-1-1a-2s/2p-Finish	

	<p>In the event of the next leg change of the course, mark 1a will not be relocated. All classes shall round the new mark 1 leaving it to port.</p>
--	---

COURSE W

Course	Description	
<div style="border: 1px solid black; padding: 10px;"> <p>W</p>  </div>	Windward/Leeward offset mark 1a with Downwind finish	
	Possible courses	
	Signal	Mark Rounding Order
	W1	Start-1-1a-Finish
W2	Start-1-1a-2s/2p-1-1a-Finish	
W3	Start-1-1a-2s/2p-1-1a-2s/2p-1-1a-Finish	
	<p>In the event of the next leg change of the course, mark 1a will not be relocated. All classes shall round the new mark 1 leaving it to port.</p>	