



# ***PLUFF MUD REGATTA***

## **SEPTEMBER 7-8, 2024**

**The Beaufort Yacht & Sailing Club**

# **SAILING INSTRUCTIONS**

## **FOR THE ILCA, SUNFISH and 420 COURSE**

**(The OPTI, O'Pen Skiff Sailing Instructions start on page 6)**

### **1. RULES**

- 1.1 This regatta will be governed by the rules as defined in *The Racing Rules of Sailing for 2021-2024*
- 1.2 Coaches, parents and competitors are expected to have read and understand the Junior Code of Ethics, which will be enforced.
- 1.3 RRS 2021-2024 Appendix V shall apply as the Alternative Penalty System.

### **2. NOTICES TO COMPETITORS**

- 2.1 Notices to competitors will be posted on the official notice board located on the screen porch of the clubhouse.

### **3. SAFETY**

- 3.1 A boat that retires from a race or leaves the racing area between races shall notify the race committee as soon as possible.
- 3.2 A personal flotation device must be worn by all competitors when away from shore.
- 3.3 Closed toe shoes shall be worn while launching and retrieving boats.
- 3.4 The sail number of the boat must be the same as on the entry form.
- 3.5 The sail number must be displayed on both sides of the sail.
- 3.6 Competitors shall check in with the race committee signal boat upon arriving at the course each day by hailing their sail number and name loudly.
- 3.7 The Race Committee, for breaches of SI 3.1 – 3.6, may assign a penalty which may include Disqualification That Is Not Excludable (DNE) to a boat without a hearing for the first race of the day in which the breach occurred. This changes RRS A5.
- 3.8 Dollies are not to be left on the shore due to tide.

#### **4. CHANGES TO THE SAILING INSTRUCTIONS**

- 4.1 On-shore changes to the sailing instructions will be posted within 15 minutes of the close of the competitors' meeting on Saturday and by 9:30 on Sunday.
- 4.2 Changes to the schedule will be posted by 7:00 pm on the day before the change is in effect.
- 4.3 On-the-water changes to the sailing instructions will be made before the warning signal of a race by hoisting code flag "L" with one sound signal and announcing the change verbally.

#### **5. SIGNALS MADE ASHORE**

- 5.1 Signals made ashore will be displayed from the club flagpole.
- 5.2 When flag "AP" is displayed ashore, "1 minute" is replaced with "not less than 30 minutes." This changes RRS race signal AP.

#### **6. SCHEDULE:**

- 6.1 Saturday 8:00 – 10:00 Verify Registration information in Clubhouse. Pick up meal tickets.
  - 10:00 Welcome & Competitors' Meeting
  - 10:30 Coaches & RC Meetings
  - 12:30 Warning signal for 1<sup>st</sup> race. Other races to follow.
- 6.2 Sunday 9:00 Coaches and RC Meeting
  - 10:00 Warning signal for 1<sup>st</sup> race. Other races to follow
- 6.3 There is an unlimited number of races scheduled.
- 6.4 On Sunday no warning signal will be given after 2:00pm.
- 6.5 Awards will follow racing.

#### **7. CLASS FLAGS**

- 7.1 420 – 420 Class Flag
- 7.2 ILCA 7 – ILCA 7 Class Flag
- 7.3 ILCA 6 – ILCA 6 Class Flag
- 7.4 ILCA 4 – ILCA 4 Class Flag
- 7.5 Sunfish – Sunfish Class Flag

#### **8. RACING AREA**

- 8.1 The racing area is on the Beaufort River between the McTeer Bridge and the marshes in front of downtown Beaufort.

#### **9. COURSES**

- 9.1 The course for the ILCA, Sunfish and 420s will be windward/leeward. The leeward mark will be a single mark located to windward of the start/finish line and **IS** a mark of the course on the final downwind leg.

- 9.2 The course will be designated with a W/L and a number indicating the number of **legs** to be sailed including the final reach to the finish.
- 9.3 The diagram shows the course.

## **10. MARKS**

- 10.1 Marks for the ILCA, Sunfish and 420s will be Orange Balls.
- 10.2 A White offset mark may be used.
- 10.3 The starting mark will be a pin end buoy with staff displaying an orange flag.
- 10.4 The finish mark will be a pin end buoy with staff displaying a blue flag.

## **11. THE START**

- 11.1 Races will be started under Racing Rules of Sailing Rule 26 (5-minute sequence with visual and audible signals)
- 11.2 The start line will be between the starting mark and an orange flag on the signal boat.
- 11.3 Boats whose warning signal has not been made shall avoid the start area during the start sequence for other classes.
- 11.4 A boat that does not start within 5 minutes after her start signal will be scored Did Not Start (DNS) without a hearing. This changes RRS A4 and A5.
- 11.5 The intended order of starts for the first race of the day will be 420s, ILCA 7, ILCA 6, ILCA 4, Sunfish.

## **12. THE FINISH**

- 12.1 The finish line will be between a blue flag on the signal boat and the finish mark displaying a blue flag on the opposite side of the signal boat from the Start line.
- 12.2 After finishing a boat shall clear and remain clear of the start/finish area until their next warning.

## **13. TIME LIMITS**

- 13.1 The time limit for the first boat in a race to sail the course and finish is **45** minutes.
- 13.2 Boats failing to finish within **15** minutes after the first boat in a race sails the course and finishes will be scored Did Not Finish (DNF) without a hearing.

## **14. PROTESTS AND REQUESTS FOR REDRESS**

- 14.1 A boat intending to protest another boat in the racing area during a race shall notify the other boat immediately of her intent, including the word **“protest”**.
- 14.2 A boat intending to protest another boat shall notify the race committee signal boat as soon as possible after finishing, stating the sail number of the protested boat.
- 14.3 Protest forms are available at the official notice board. Protest forms shall be submitted to a protest committee representative near that location.

- 14.4 The protest time limit is 30 minutes after the race committee signal boat docks. The protest time limit (filing deadline) will be posted on the official notice board as soon as practicable.

## **15. SCORING**

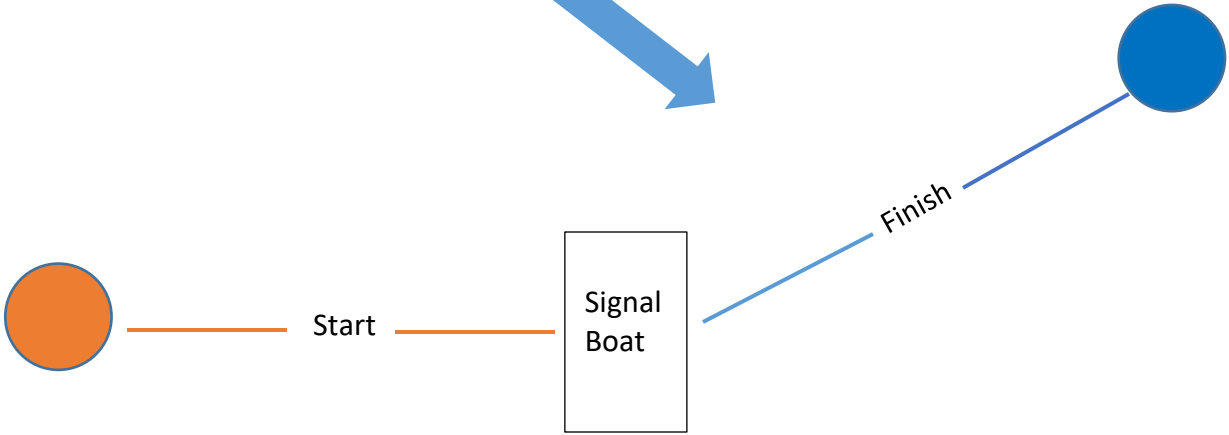
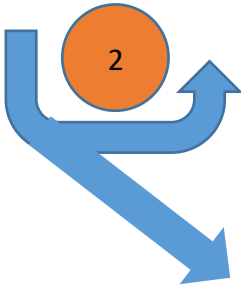
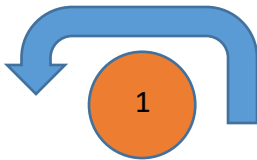
- 15.1 The Low Point Scoring System of RRS Appendix A will apply as revised below.
- 15.2 The number of boats entered in the regatta will be defined as the number of registered boats which subsequently completed competitor Check-In at the regatta venue. This change is added to the first sentence to RRS A2 and A4.
- 15.3 One completed race shall constitute a regatta.
- 15.4 Each boat's regatta score shall be the total of her race scores, excluding her worst score if six or more races are completed. This modifies RRS A2.1.

## **16. EQUIPMENT**

- 16.1 Equipment (including sails) may be substituted only with written permission of the race committee.

Rev. 9.2.2024

# ILCA, Sunfish, 420 Course



*Note: Diagram not to scale. Mark colors and shapes are illustrative only.*



***Pluff Mud Regatta***  
**SEPTEMBER 7-8, 2024**

**The Beaufort Yacht & Sailing Club**

# **SAILING INSTRUCTIONS**

**FOR THE OPTIMIST and O'Pen Skiff COURSE**

## **1. RULES**

- 1.1. The event is governed by the rules as defined in *The Racing Rules of Sailing for 2021-2024*.
- 1.2. Each sailor is required to wear a life jacket and shoes. Shoes must be worn while sailing and launching or retrieving your boat due to oyster shells.
- 1.3. All competitors, parents, coaches, or other parties of interest are expected to comply with all rules of sportsmanship (RRS) and the SAYRA Junior Championship Committee "[Code of Ethics](#)". Violation on their part may result in the competitor's disqualification from the race, regatta, or Series and reporting to their member club.
- 1.4. The SAYRA Junior Grand Prix Championship Series NOR "[SAYRA NOR](#)" is referenced and to be adhered to for this event. In case of conflict in NORs the SAYRA NOR shall prevail.
- 1.5. RRS 2021-2024 Appendix V shall apply as the Alternative Penalty System.
- 1.6. All boats shall have sail numbers on both sides of the sail.
- 1.7. All boats shall give way to law enforcement and commercial traffic such as barges.
- 1.8. ICW marker 242 (across from the club) shall not be passed on the western side due to obstructions.

## **2. NOTICES TO COMPETITORS**

- 2.1. Notices to competitors will be posted on the official notice board located on the screen porch of the clubhouse and on Regatta Network.

### 3. SAFETY

- 3.1. A boat that retires from a race or leaves the racing area between races shall notify the race committee as soon as possible.
- 3.2. A personal flotation device must be worn by all competitors when away from shore.
- 3.3. Closed toe shoes shall be worn while launching and retrieving boats.
- 3.4. The sail number of the boat must be the same as on the entry form.
- 3.5. The sail number must be displayed on both sides of the sail.
- 3.6. Competitors shall check in with the race committee signal boat upon arriving at the course each day by hailing their sail number and name loudly.
- 3.7. The Race Committee, for breaches of SI 3.1 – 3.6, may assign a penalty which may include Disqualification That Is Not Excludable (DNE) to a boat without a hearing for the first race of the day in which the breach occurred. This changes RRS A5.
- 3.8. While racing, dollies are to be left where directed by staff.

### 4. CHANGES TO THE SAILING INSTRUCTIONS

- 4.1. On-shore changes to the sailing instructions will be posted within 15 minutes of the close of the competitors' meeting on Saturday and by 9:30 on Sunday.
- 4.2. Changes to the schedule will be posted by 7:00 pm on the day before the change is in effect.
- 4.3. On-the-water changes to the sailing instructions will be made before the warning signal of a race by hoisting code flag "L" with one sound signal and announcing the change verbally.

### 5. SIGNALS MADE ASHORE

- 5.1. Signals made ashore will be displayed from the club flagpole.
- 5.2. When flag "AP" is displayed ashore, "1 minute" is replaced with "not less than 30 minutes." This changes RRS race signal AP.

### 6. SCHEDULE

- |      |   |              |   |
|------|---|--------------|---|
| 6.1. | Saturday  | 8:00 – 10:00 | Verify Registration information in Clubhouse. Pick up meal tickets and Welcome Packet |
|      |   | 10:00        | Welcome & Competitors' meetings   |
|      |   | 10:30        | Coaches and RC Meeting  |
|      |   | 12:15        | Warning signal for 1 <sup>st</sup> race. Other races to follow.                       |
| 6.2. | Sunday  | 9:00         | Coaches and RC Meeting  |
|      |   | 10:00        | Warning signal for 1 <sup>st</sup> race. Other races to follow.                       |
| 6.3. | There is an unlimited number of races scheduled.        |              |   |
| 6.4. | On Sunday no warning signal will be given after 2:00pm. |              |   |
| 6.5. | Awards will follow racing.                              |              |   |

## 7. CLASS FLAGS

- 7.1. O'Pen Skiff O'Pen Skiff Class Flag
- 7.2. Optimist RWB White Optimist Class Flag
- 7.3. Optimist Green Green Optimist Class Flag

## 8. RACING AREA

- 8.1 The racing area is on the Beaufort River between the McTeer Bridge and the marshes in front of downtown Beaufort.

## 9. COURSE

- 9.1. The course will be a trapezoid with the start/finish line in the windward leg.
- 9.2. The diagram shows the course.
- 9.3. The start/finish lines are closed and shall not be crossed while racing except to start or finish.
- 9.4. The long weather mark is for the Optimist RWB class and the O'Pen Skiff class. The yellow short weather mark is for the Optimist Green class.

## 10. MARKS

- 10.1. Marks 1,2,3 & 4 will be Orange Balls.
- 10.2. O'Pen Skiffs may use the Bridge of Doom as an alternative Mark 2.
- 10.3. The Bridge of Doom is closed to all but O'Pen Skiff sailors.
- 10.4. Mark 1G will be a Yellow Ball.
- 10.5. The starting mark will be a pin end buoy with staff displaying an orange flag.
- 10.6. The finish mark will be a pin end buoy with staff displaying a blue flag.

## 11. THE START

- 11.1. A series of short blasts will be made before each warning signal.
- 11.2. Rolling starts may be used. Watch the flags.
- 11.3. Races will be started as follows:

<i>Minutes before starting signal</i>	<i>Visual Signal</i>	<i>Sound Signal</i>	<i>Means</i>
3	Class Flag	One	Warning Signal
2	P, I, U or black flag	One	Preparatory Signal
1	Prep flag removed	One long	One Minute to Start
0	Class flag removed	One	Starting Signal

This modifies Rule 26.

- 11.4. The start line will be between the pin end starting mark and an orange flag on the signal boat.
- 11.5. Boats whose warning signal has not been made shall avoid the start area during the start sequence for other classes.



- 11.6. A boat that does not start within 3 minutes after her start signal will be scored Did Not Start (DNS) without a hearing. This changes RRS A4 and A5.
- 11.7. The order of starts for the day will be announced at the Competitor meeting.

## **12. THE FINISH**

- 12.1. The finish line will be between a blue flag on the signal boat and the finish mark displaying a blue flag on the opposite side of the signal boat from the Start line.
- 12.2. After finishing a boat shall clear and remain clear of the start/finish area until their next warning.

## **13. TIME LIMITS**

- 13.1. The time limit for the first boat in a race to sail the course and finish is **45** minutes.
- 13.2. Boats failing to finish within **15** minutes after the first boat in a race sails the course and finishes will be scored Did Not Finish (DNF) without a hearing.

## **14. PROTESTS AND REQUESTS FOR REDRESS**

- 14.1. A boat intending to protest another boat in the racing area during a race shall notify the other boat immediately of her intent, including the word **“protest”**.
- 14.2. A boat intending to protest another boat shall notify the race committee signal boat as soon as possible after finishing, stating the sail number of the protested boat.
- 14.3. Protest forms are available at the official notice board. Protest forms shall be submitted to a protest committee representative near that location.
- 14.4. The protest time limit is 30 minutes after the race committee signal boat docks. The protest time limit (filing deadline) will be posted on the official notice board as soon as practicable.

## **15. SCORING**

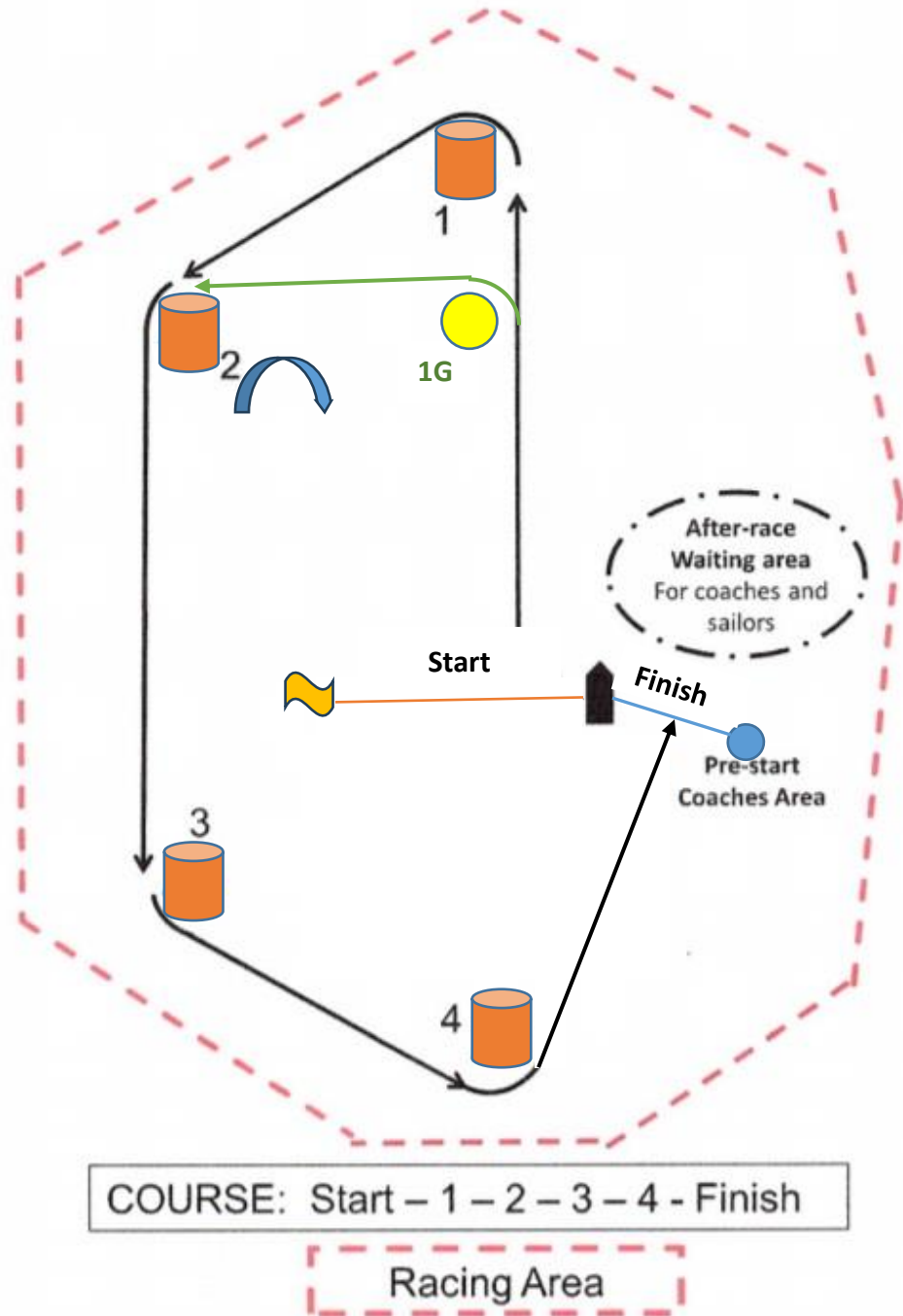
- 15.1. The Low Point Scoring System of RRS Appendix A will apply as revised below.
- 15.2. The number of boats entered in the regatta will be defined as the number of registered boats which subsequently completed competitor check-in at the regatta venue. This change is added to the first sentence to RRS A2 and A4.
- 15.3. One completed race shall constitute a regatta.
- 15.4. Each boat’s regatta score shall be the total of her race scores, excluding her worst score if six or more races are completed. This modifies RRS A2.1.

## **16. EQUIPMENT**

- 16.1. Equipment (including sails) may be substituted only with the permission of the Race Committee.

**9.2.2024**

## Simple Trapezoid Course



*Note: Diagram not to scale. Mark colors and shapes are illustrative only.*