



*Waikiki Yacht Club*  
1599 Ala Moana Blvd  
Honolulu, Hawaii, 96814  
808.995.4405 | [regatta@waikikiyachtclub.com](mailto:regatta@waikikiyachtclub.com)

## **Sailing Instructions**

### **D.J.JOHNSON AROUND OAHU REGATTA**

**May 25<sup>th</sup>, 26<sup>th</sup>, 27<sup>th</sup> 2024**

#### **1. RULES:**

1.1. The regatta will be governed by the rules as defined in the Racing Rules of Sailing (RRS), the prescriptions of US SAILING, pertinent Class/Fleet Rules, by the Waikiki Yacht Club and Hawaii Yacht Racing Association Standing Sailing Instructions, the Notice of Race and these Sailing Instructions.

1.2. The RRS are changed as follows:

1.2.1. Rule 52 - The use of powered winches is authorized.

1.2.2. Rule 52 is modified to allow the use of autopilot for double and single-handed racers only.

1.2.3. Rule 49 does not apply to Multihulls.

1.2.4.6.4 Redress: RRS 60, 63.2, 63.4, US Sailing Prescriptions to RRS 60 (Participation Committee composition) are deleted.

1.2.5. Rule 55 does not apply for spinnaker stopping materials only. It still applies to trash..

2. **NOTICES TO COMPETITORS:** Notices to competitors will be posted on the official notice board located in the WYC on the regatta board for the first day, on the KYC bulletin board for the second day and available from the Race Committee boat for the third day.

3. **CHANGES TO THE SAILING INSTRUCTIONS:** Any change to the sailing instructions will be posted before 0900 on the day it will take effect. Except on the third day, they will be passed out from the race committee boat.

4. **SIGNALS MADE ASHORE:** Signals made ashore will be displayed from the WYC flagpole for day one, the KYC flagpole for day two and all signals will be made from the race committee boat on day three.

#### **5. SCHEDULE OF RACING:**

See appendices A, B and C

#### **6. PROTESTS AND REQUESTS FOR REDRESS**

6.1 Protest forms are available at WYC. Protests and requests for redress or reopening shall be delivered there or via email to [rc-sail@waikikiyachtclub.com](mailto:rc-sail@waikikiyachtclub.com) within two hours of last boat's completion.

6.2 Protests will be heard in approximately the order received as soon as possible.

6.3 Protests on incidents occurring on Day 2 will be heard immediately after the Day 3 race.

6.4 Protest notices will be posted within 30 minutes of the protest time limit to inform competitors where and when there is a hearing in which they are parties or are named as witnesses.

#### **7. REQUIREMENTS FROM DNLR:**

7.1 Our permit does not authorize the use of any beach parks or facilities, please contact city parks at 768-3440 or appropriate agencies.

7.2 All boats shall follow all navigational rules at all times while in the ocean waters.

7.3 Each boat operator shall have passed the boater safety education class and have their boater safety education card on them during the use of the motorized vessels.

7.4 Participants shall take all precautions during the event and be aware that there are multiple events occurring on the same days throughout Oahu ocean waters.

**8. FURTHER INFORMATION;**

Gary Evoniuk 919 599 3111 or [rc-sail@waikiyachtclub.com](mailto:rc-sail@waikiyachtclub.com)

**APPENDIX A**  
**May 25, 2024**  
**Day 1**

**Racing Area:** The racing area will be off the leeward and windward shores of Oahu

**The Course:** The course will be Start – DH to port – Finish. Boats shall pass all islands to port (seaward). Approx. 27 NM.

**Signals:** Class Flags as described below will be displayed for each classes Warning Signal.

PH A & B	Black with #1
PH X	Pink with Black X
Multihulls	Blue with M

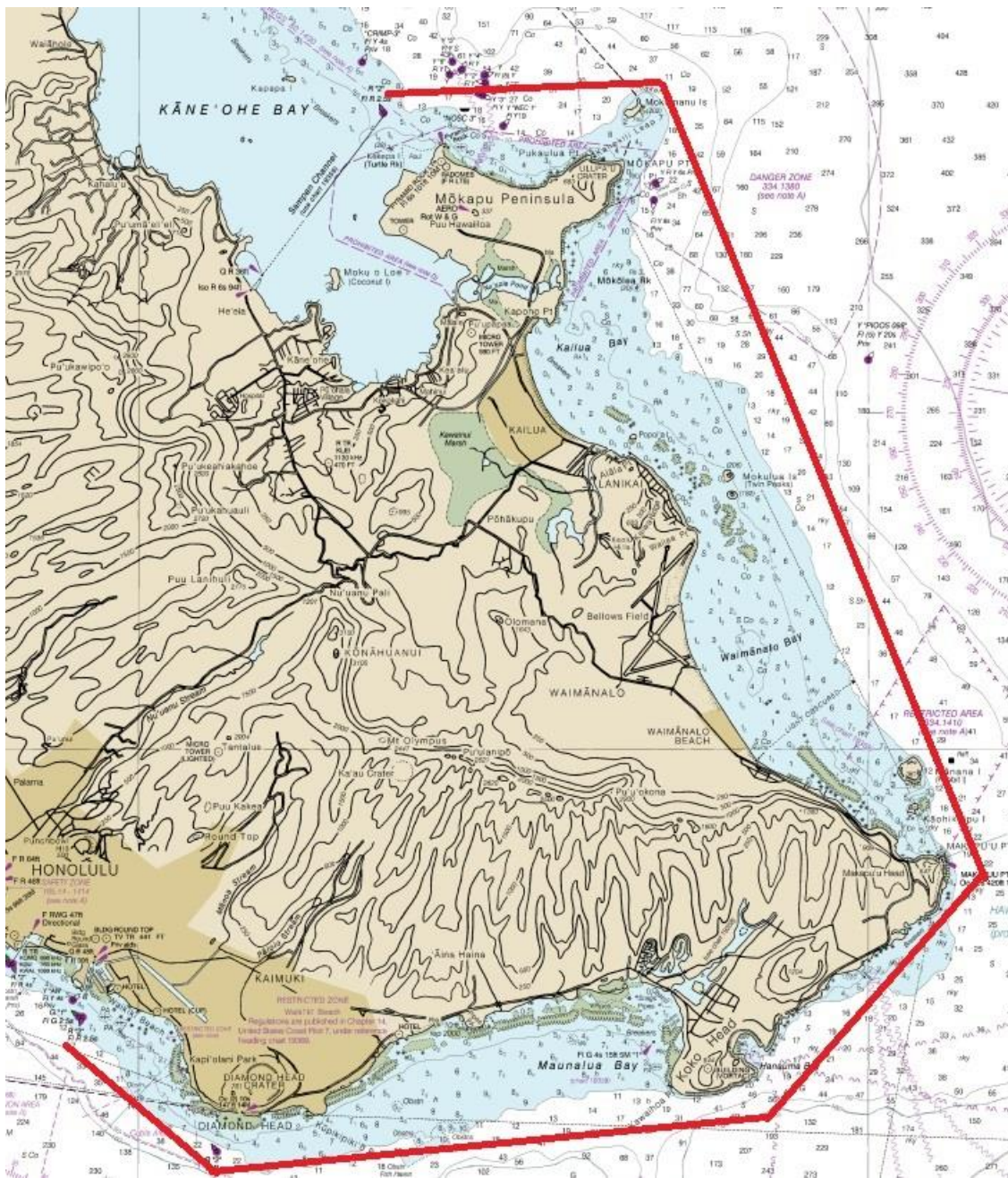
**The Start:** The start will be located approx. ¼ mile southeast of the Ala Wai Harbor Entrance. The Starting Line will be between two yellow or orange inflatable buoys. A boat shall not start later than 10 minutes after her starting signal.

<u>Class</u>	<u>Warning</u>	<u>Start</u>
PH A, B	0955	1000
PH X	1005	1010
Multihulls	1015	1020

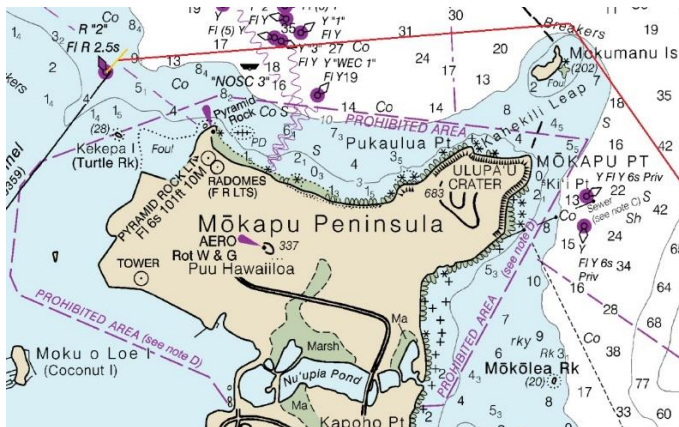
**The Finish:** The finish is at Kaneohe Bay Sampan channel entrance. The finish line is the Sampan Channel entrance buoy R2 passing within 50 yards to starboard of R2 and at a bearing to land of 207 degrees magnetic. If Race Committee Boat is on station in the Sampan Channel, boats may communicate on **VHF Channel 68** to verify their finish times. If Race Committee Boat is not on station boats shall finish and report their finish times (name of boat, HST time of day of finish in HH:MM:SS) to the Race Committee via text to Gary Evoniuk at (919) 599-3111 within one hour of finishing.

**Safety:** Any boat that starts but returns to Waikiki rather than finishing at KYC should contact Race Committee by VHF Channel 68 or by phone at (919) 599-3111.

**Entering into Kaneohe Bay and Mooring:** Boats with a draft over 7 ft. should use the Main Ship Channel to enter Kaneohe Bay. Contact KYC port captain regarding mooring at Kaneohe Yacht Club at least one week prior.



Day One – Course



Day One – Finish (finish line drawn in yellow)

**APPENDIX B**  
**May 26, 2024**  
**Day 2**

**Racing Area:** The racing area will be off the windward and north shores of Oahu.

**The Course:** The course will be: Start – Finish at entrance to Haleiwa Harbor – Approx. 33 NM.

**Signals:** Class Flags as described below will be displayed for each class's Warning Signal.

PH A & B	Black with #1
PH X	Pink with Black X
Multihulls	Blue with M

**The Start:** The starting line will be between Kaneohe Ship Channel R1 and the staff of an orange flag on the Race Committee Boat. A boat shall not start later than 10 minutes after her starting signal.

<u>Class</u>	<u>Warning</u>	<u>Start</u>
PH A, B	0955	1000
PH X	1005	1010
Multihulls	1015	1020

**The Finish:** The finish line is Haleiwa Harbor buoy R2 passing within 50 yards to starboard of R2 and at a bearing to land of 135 degrees magnetic. If Race Committee member is on station at Haleiwa Alii Beach Park, boats may communicate on **VHF Channel 68** to verify their finish times. If Race Committee member is not on station boats shall finish and report their finish times (name of boat, HST time of day of finish in HH:MM:SS) to the Race Committee via text to Gary Evoniuk at (919) 599-3111 within one hour of finishing.

**MOORING:** It is each entrant's responsibility to secure mooring for the second day. Mooring applications can be filed at any of the state harbors. Required documents include but are not limited to: vessel registration, vessel proof of insurance and photo identification.





**APPENDIX C**  
**May 27, 2024**  
**Day 3**

**Racing Area:** The racing area will be off the leeward shore of Oahu.

**The Course:** The course will be Start - BP buoys 1 & 2 to port – Pearl Harbor buoys 1 & 2 to port – HH to port – Finish at Ala Wai Channel entrance. Approx. 19 NM

**Areas That Are Obstructions:** Note the Prohibited area which must be passed to port.

**Signals:** Class Flags as described below will be displayed for each class’s warning signal.

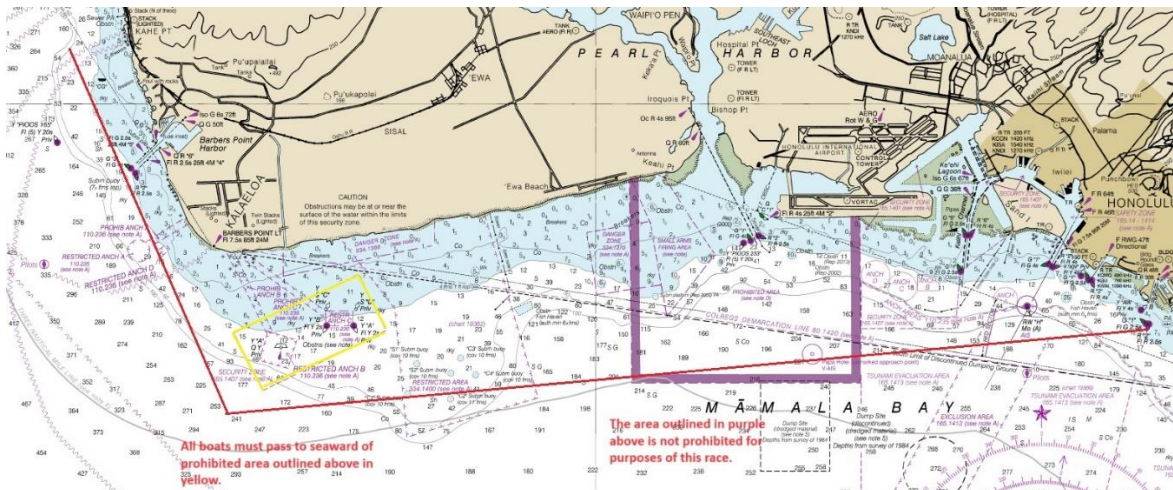
PH A & B	Black with #1
PH X	Pink with Black X
Multihulls	Blue with M

**The Start:** The Starting Line will be between a yellow inflatable buoy and the staff of an orange flag on the Race Committee Boat. It will be located to seaward of Kahe Power Plant. A boat shall not start later than 10 minutes after her starting signal.

<u>Class</u>	<u>Warning</u>	<u>Start</u>
PH A & B	1055	1100
PH X	1105	1110
Multihulls	1115	1120

**The finish:** The finish is at Ala Wai channel entrance between Ala Wai Channel entrance buoys G1 and R2 with R2 to starboard. If Race Committee Boat is on station in the Ala Wai Channel, boats may communicate on **VHF Channel 68** to verify their finish times. If Race Committee Boat is not on station boats shall finish and report their finish times (name of boat, HST time of day of finish in HH:MM:SS) to the Race Committee via text to Gary Evoniuk at (919) 599-3111 within one hour of finishing.

**Prizes:** Prizes will be awarded at approximately 1600 at WYC.



**Day 3 - Course**