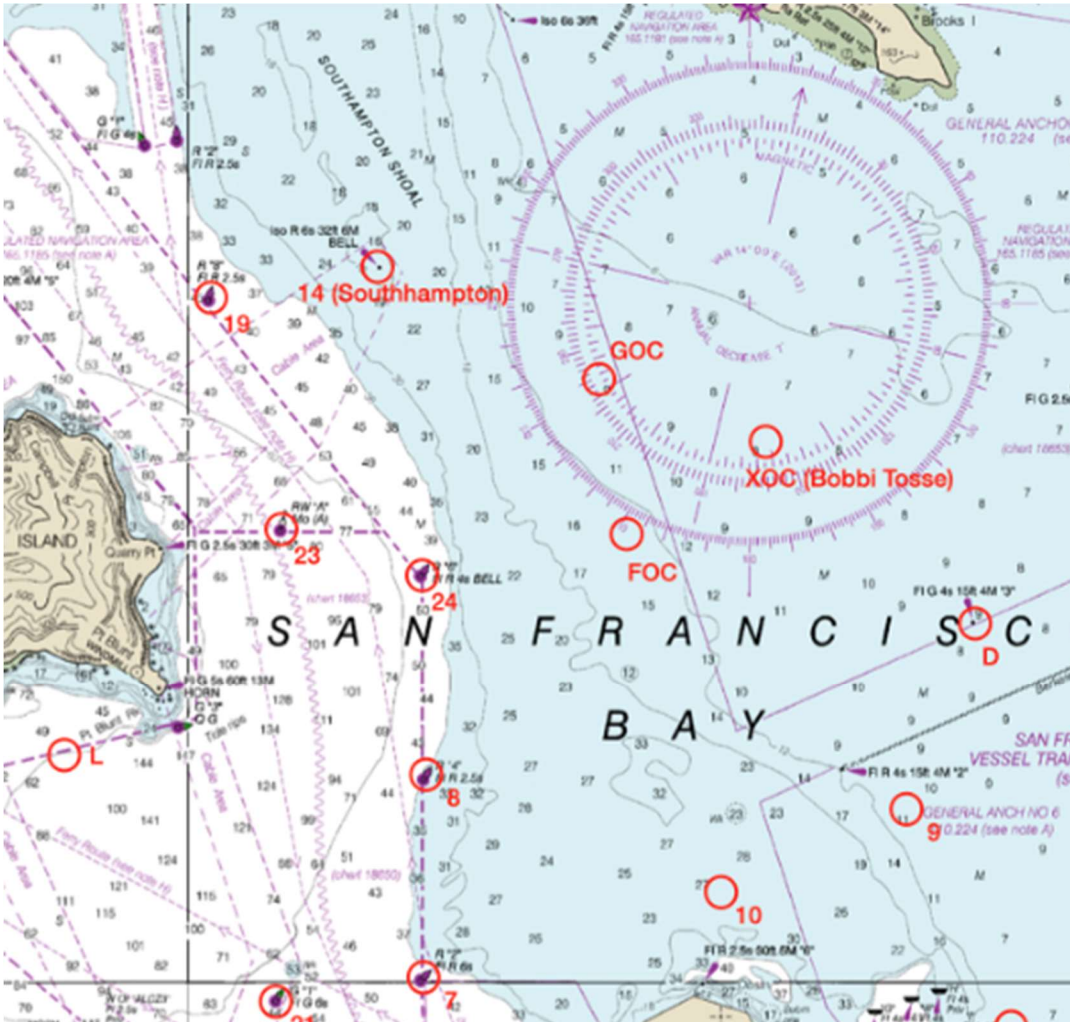


# Addendum 2

## Racing Area

The racing will be in the vicinity of the Berkeley “Olympic Circle”. The start line, weather dependent, will be approximately 1/3nm ENE of the buoy “XOC” (37 52.34 / 122 21.51)



### Reminder:

**NOR 7.1:** The following areas are designated as obstructions: -A 200' circle around Southampton shoal platform.