



Sailing Instructions

The notation '[NP]' in a rule of the sailing instructions (SIs) means that a boat may not *protest* another boat for breaking this rule. This changes RRS 60.1(a).

1. RULES

The regatta will be governed by the *rules* as defined in *The Racing Rules of Sailing*, the West Florida PHRF (WFPHRF) Class Rules and applicable One-Design Class Rules.

2. COMMUNICATIONS WITH COMPETITORS

2.1 Notices to competitors will be posted on the official notice board located in the Squadron pavilion on the north side of the club.

2.2 On the water, the race committee intends to monitor and communicate with competitors on VHF channel 69.

2.3 While racing, except in an emergency, a boat shall not make voice or data transmissions and shall not receive voice or data communication that is not available to all boats.

3. CHANGES TO SAILING INSTRUCTIONS

Any change to the sailing instructions will be posted before 0900 on the day it will take effect, except that any change to the schedule of races will be posted by 1900 on the day before it will take effect.

4. SIGNALS MADE ASHORE

4.1. Signals made ashore will be displayed at the flagpole in front of the clubhouse.

4.2. When flag AP is displayed ashore, '1 minute' is replaced by 'not less than 60 minutes' in the race signal AP.

5. SCHEDULE

Day	Time	
Fri		Fleets Arrive

Sat	0830 - 0930	Registration and Check In
	1000	Competitors' Meeting
	1130	Warning Signal – 1 st Race
	1500-1800	Free Regatta Dinner
Sun	1100	Warning Signal- 1 st Race
Mon	1000	Warning Signal- 1st Race
	1500	No warning signal after this time
		Awards to begin as soon as possible after racing

6. CLASS FLAGS

6.1 The Nacra 15 flag will be a white flag with the Nacra class logo.

6.2 The F18 flag will be the F18 class flag.

6.2 The Stiletto/Corsair class flag will be a Numeral Pennant 2 Flag.

7. RACING AREA

Attachment I shows the location of the course racing area.

8. THE COURSES

Course Races - The diagrams in Attachment II show the courses, including the approximate angles between legs and the order in which marks are to be passed and the side on which the mark is to be left.

9. MARKS

9.1 All marks will be large tetrahedrons or cylinders, with colors to be announced during the skipper's meeting.

9.2 Where there is a gate, if one of the gate marks is missing, the remaining gate mark will be left to port.

9.3 In the event of a change of the next leg of the course, the offset mark (1a) will not be relocated. All boats shall round the new mark, leaving it to port.

10. THE START and THE FINISH

10.1. *Course Races* – The starting line will be between a staff displaying an orange flag and the start mark. The finishing line will be between a staff displaying an orange flag and the finish mark.

10.2.[DP] Boats whose warning signal has not been made shall avoid the starting area during the starting sequence for other races.

10.3.A boat starting later than 4 minutes after her starting signal will be scored Did Not Start without a hearing. This changes rule A5.1 and A5.2.

10.4 Nacra 15 fleet will start first unless otherwise stated by the Race Committee.

11. CHANGE OF THE NEXT LEG OF THE COURSE

11.1.To change the next leg of the course, the race committee will lay a new mark (or move the finishing line) and remove the original mark as soon as practicable.

11.2.That in the event of a change there will be no mark 1(a). All classes shall round the new mark 1 leaving it to port.

12. PENALTY SYSTEM

12.1.Rule 44.1 is changed so that the Two-Turns Penalty is replaced by One-Turn Penalty.

13. TIME LIMIT

Course Races - Boats failing to finish within 30 minutes after the first boat in their class sails the course and finishes will be scored DNF without a hearing. This changes RRS 35, A5.1 and A5.2.

14. HEARING REQUESTS

14.1.Protest forms are available outside the Club Office. Protests and requests for redress shall be delivered there within 60 minutes after the race committee signal boat docks. The docking time will be posted on the Official Notice Board 14.2.Notices will be posted no later than 30 minutes after the protest time limit to inform competitors of hearings in which they are parties or named as witnesses. Hearings will be held in the club office beginning at the time posted.

14.3.Notices of protests by the race committee, technical committee or protest committee will be posted to inform boats under rule 61.1(b).

15. SCORING

15.1.The Low-Point Scoring System of Appendix A will apply except no race will be excluded. This changes rule A.2.

15.2.One race is required to be completed to constitute a series.

15.3.Rating systems used will be PHRF (time-on distance). If PHRF no rating is available, the Organizing Authority may in its sole discretion assign a provisional rating for this event only.

15.4.Scoring for the 3-day sailors is based on an aggregate of all races sailed Friday through Sunday.

16. [DP][NP] SAFETY REGULATIONS

16.1.Check-Out and Check-In: Boats must check in and receive acknowledgement from the race committee before the first race of each day.

16.2.A boat that retires from a race shall notify the race committee as soon as possible.

17. EQUIPMENT AND MEASUREMENT CHECKS

A boat or equipment may be inspected at any time for compliance with the class rules and sailing instructions.

18. PRIZES

19.1.Prizes will be given to each boat placing first, second and third in each class with five or more entries; to those placing first and second in classes with four entries and to the first place competitor in classes with three entries.

19.2.The 'Robert Anthony Buzzelli Perpetual Trophy' will be awarded.

19.3.Other prizes may be awarded.

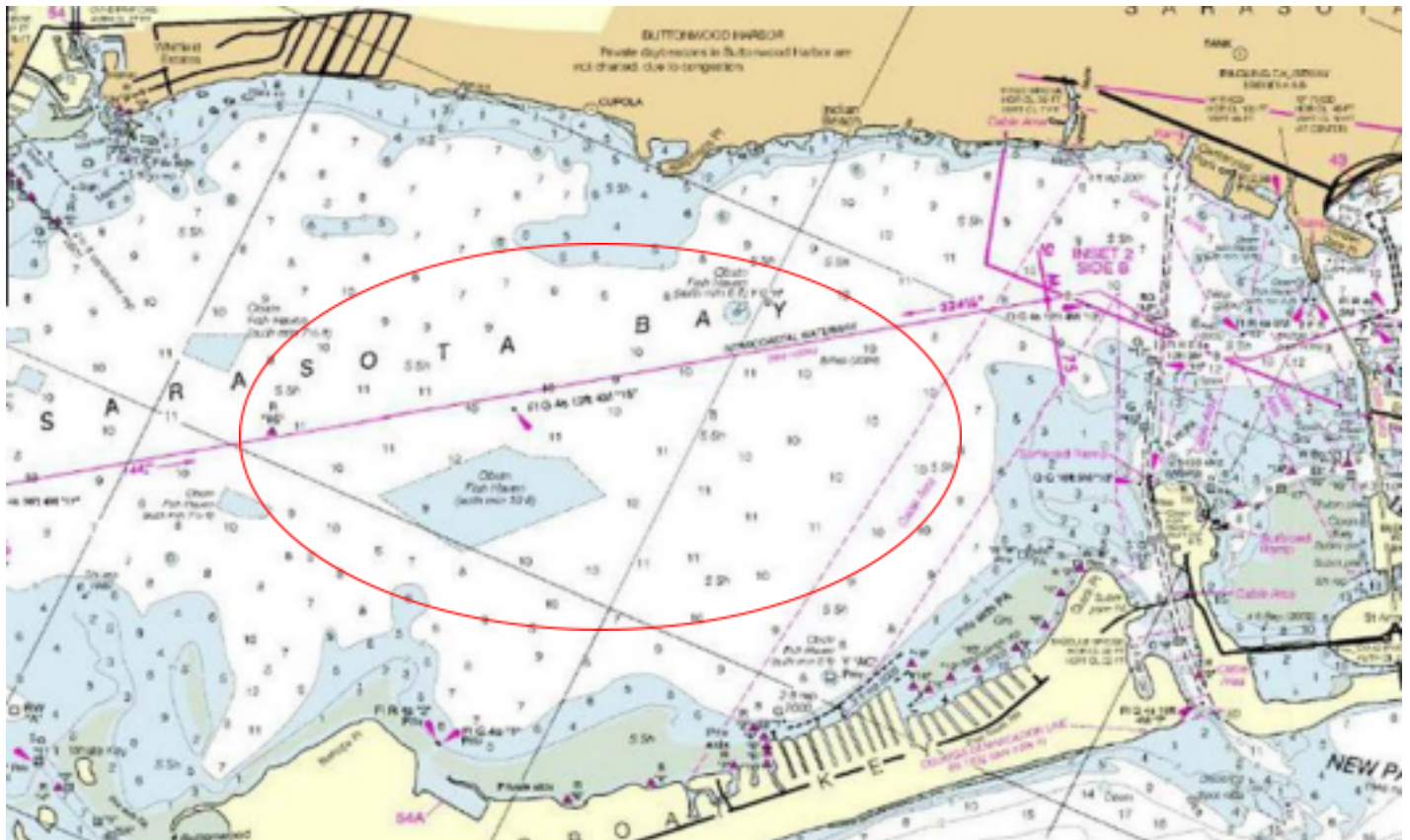
20. RISK STATEMENT

RRS 3 states: "The responsibility for a boat's decision to participate in a race or to continue to race is hers alone." By participating in this event each competitor agrees and acknowledges that sailing is a potentially dangerous activity with inherent risks. These risks include strong winds and rough seas, sudden changes in weather, failure of equipment, boat handling errors, poor seamanship by other boats, loss of balance on an unstable platform and fatigue resulting in increased risk of injury. t

21. INSURANCE

Each participating boat shall be insured with valid third-party liability insurance with a minimum cover of \$300,000 USD per incident or the equivalent. The organizing authority does not accept any responsibility for verifying that a boat has third-party liability insurance.

Attachment I – Race Area



Attachment II – Course Illustrations

L

Wind

2g 2g

Start Finish

Course: Leeward finish

Signal	Mark Rounding Order
4	Start – 1 – 1a – 2g – 1 – 1a – Finish
6	Start – 1 – 1a – 2g – 1 – 1a – 2g – 1 – 1a – Finish

W

Wind

2g 2g

Start

Finish

Course: Windward Finish

Signal	Mark Rounding Order
5	Start – 1 – 1a – 2g – 1 – 1a – 2g – Finish

Course Signal Number = number of legs excluding offset mark leg.