

# 53<sup>rd</sup> World's Longest Sunfish Race, Around Shelter Island NY

Southold Yacht Club, Southold NY 11971

July 20, 2024

## SAILING INSTRUCTIONS (SIs)

### 1 RULES

1. 1.1 The event is governed by the rules as defined in *The Racing Rules of Sailing*.

1.2 RRS 44.1 is changed as follows: **A boat may take a one-turn penalty when she may have broken one or more rules of Part 2 or RRS31 in an incident while racing.** However 44.1(b) is still in effect.

1.3 RRS 44.3 Scoring Penalty is not in effect. This changes RRS 44.3.

1.4 RRS 40.1 is in effect. All competitors must wear a **Coast Guard** approved personal flotation device.

1.5 All boats must use only Sunfish class recognized equipment. This includes dagger boards and rudders. This is a Sunfish class one-design event. However non-class sail numbers are allowed. Electronic navigation devices may be used. This changes ISCA rule 4.2. Boats may also carry cell phones and radios for emergencies. Equipment rules can be found at [International Sunfish Class Association](https://www.international-sunfish.com/).

### 2 CHANGES TO SAILING INSTRUCTIONS

2.1 Any change to the sailing instructions will be posted before 1045 on the day of the regatta. Changes will be posted on the official notice board which will be on the exterior of the windows of SYC so designated.

### 3 COMMUNICATIONS WITH COMPETITORS

3.1 On the day of the event notices to competitors will be posted on the official notice board located on the exterior of the windows of SYC so designated on the day of the event. Prior to the day of the event notices will be posted on event website.

3.2 From the first warning signal until the end of the last race of the day, except in an emergency, a boat shall not make voice or data transmissions that are not available to all boats except as allowed by SI 1.5, or that give unfair advantage, and shall not receive voice or data communication that is not available to all boats.

#### 4 CODE OF CONDUCT

4.1 Competitors and support persons shall comply with reasonable requests from race officials.

#### 5 SIGNALS MADE ASHORE

5.1 Signals made ashore will be displayed on the SYC flag pole.

5.2 When flag AP is displayed ashore, '1 minute' is replaced with 'not less than 30 minutes' in Race Signals AP.

#### 6 SCHEDULE OF RACES

6.1 The regatta is comprised of one race. Schedule as follows:

1127 Warning Sunfish Class, all divisions

1130 Start Sunfish Class, all divisions

#### 7 CLASS FLAGS

7.1 Class flag will not be used.

#### 8 START/FINISH AREA

8.1 The start/finish area will be in Southold Bay unless the course is shortened by the Race Committee.

#### 9 COURSES

9.1 The course is one circumnavigation of Shelter Island, beginning at the starting line and ending at the finish line. No later than the Skipper's Meeting the PRO will announce whether the course direction will be clockwise or counter-clockwise.

#### 10 MARKS

10.1 The only marks of the course are those designating the start & finish lines. No other buoys need be honored for racing. However note that buoys may mark rocks, shoals, and other hazards.

10.2 Any inflatable mark attached to the RC boat or pin vessel shall be considered part of the start/finish mark.

## 11. THE START

11.1 Races will be started using RRS Appendix U. This changes RRS 26.

11.2 The starting line is between a staff displaying an orange flag on the signal vessel at the starboard end on the starting line and a staff displaying an orange flag on the pin vessel on the port end of the line.

11.3 A boat that does not start within 10 minutes after her starting signal will be scored Did Not Start without a hearing. This will not be a cause for a request for redress. This changes RRS A5.1 and A5.2.

11.4 If any part of a boat's hull is on the course side of the starting line at her starting signal and she is identified, the race committee will attempt to hail her sail number. Failure to hail her number, failure of her to hear such a hail, or the order in which boats are hailed will not be grounds for a request for redress. This changes RRS 62.1(a).

11.5 A boat that does not finish within the Finishing Window will be scored TLE (time limit expired).

## 12 SHORTENING OR ABANDONING AFTER THE START

12.1 The Race Committee may shorten the course or abandon the race after the start per RRS 32, except that as the race has no rounding marks, lines of the course that must be crossed, or gates, a government navigational buoy will be used to designate one end of the finish line.

## 13 THE FINISH

1. 13.1 The finishing line is between a staff displaying a blue flag on the signal boat and the course side of the finishing mark, which may be a large yellow or orange drop mark.

2. 13.2 If the race committee is absent when a boat finishes, she shall report her finishing time, and her position in relation to nearby boats, to the race committee at the first reasonable opportunity.

## 14 PENALTY SYSTEM

14.1 RRS 44.1 is in effect except that a one-turn penalty is in effect when a boat may have broken a rule in Part 2 in an incident while racing.

14.2 Appendix V2 Post Race Penalty is in effect.

## 15 TIME LIMIT

15.1 **The Race Time Limit for all boats is 6 hours.** Boats failing to finish within the race time limit and not subsequently retiring, penalized or given redress, will be scored Time Limit Expired (TLE) without a hearing. This changes RRS 35. **The Finishing Window is 1 hour after the first place boat finishes the race.** Any boat not finishing within this time limit will be scored Time Limit Expired (TLE). This changes RRS 35.

Race Time Limit: 6 hours

Finishing Window: 1 hour

5.2 Boats who do not have a reasonable expectation of finishing within the time limit may be offered a tow back to SYC by a safety boat. If such an offer is refused it is understood that the boat will make its way back to SYC on its own.

## 16 HEARING REQUESTS

16.1 The race office is located at the club house at Southold Yacht Club. Any hearing request form shall be handed directly to Celeste Flick or in her absence another Race Official on site. Competitor must see that hearing request form is initialed and time of submission is noted on the form. Alternatively electronic filing may be made to [BMFbethfleisher@gmail.com](mailto:BMFbethfleisher@gmail.com).

16.2 Notices will be posted no later than 1 hour after the protest time limit to inform competitors of hearings in which they are parties or named as witnesses. Hearings will be held on SYC grounds at a place to be determined, or digitally if deemed more equitable.

**The protest and redress filing time limit is 30 minutes after the last boat finishes for the day. A boat must inform race committee of intent to file at the finish, or at the time they withdraw from the race. If informing of a protest, protestor must give the accurate boat number for boat being protested to the race committee. The race committee is considered informed when they verbally respond to the sailor in question and receive a reply.**

## 17 SCORING

17.1 The scoring system is as follows: Low Point Scoring. See RRS Appendix A for details.

## 18 SAFETY REGULATIONS

18.1 RRS 40.1 is in effect. All competitors must wear a **Coast Guard** approved personal flotation device. This changes RRS 40.1.

18.2 All boats must carry a 20' tow line. A boat's main sheet may serve at its tow line.

18.3 A boat that retires from the race shall notify the race committee or a safety boat at the first reasonable opportunity on the water. A boat that decides not to start the race shall report same to the Check-In desk before 1030 the day of the race. A boat that checks in but does not start the race or that retires shall call or text the PRO at 646-732-1066. If a boat does not return to Southold Yacht Club they shall call or text the PRO: 646-732-1066.

## 19 EQUIPMENT AND MEASUREMENT CHECKS

19.1 A boat or equipment may be inspected at any time for compliance with the class rules, notice of race and sailing instructions.

## 20 SUPPORT TEAMS

20.1 Support teams, including all support persons and support person vessels, shall comply with the support team regulations in the RRS.

20.2 Coaches and other support persons shall stay outside the starting area and not throw a wake from the time of the warning signal until 10 minutes after the start.

20.3 Support person vessels shall report to the Race Committee before 10AM, and shall give their contact information to the RC.

## 21 TRASH DISPOSAL

21.1 Do not dispose of any material into the water.

## 22 RISK STATEMENT

22.1 RRS 3 states: 'The responsibility for a boat's decision to participate in a race or to continue to race is hers alone.' By participating in this event each competitor agrees and acknowledges that sailing is a potentially dangerous activity with inherent risks. These risks include strong winds and rough seas, sudden changes in weather, failure of equipment, boat handling errors, poor seamanship by other boats, loss of balance on an unstable platform and fatigue resulting in increased risk of injury. **Inherent in the sport of sailing is the risk of permanent, catastrophic injury or death by drowning, trauma, hypothermia or other causes.**

Beth Fleisher

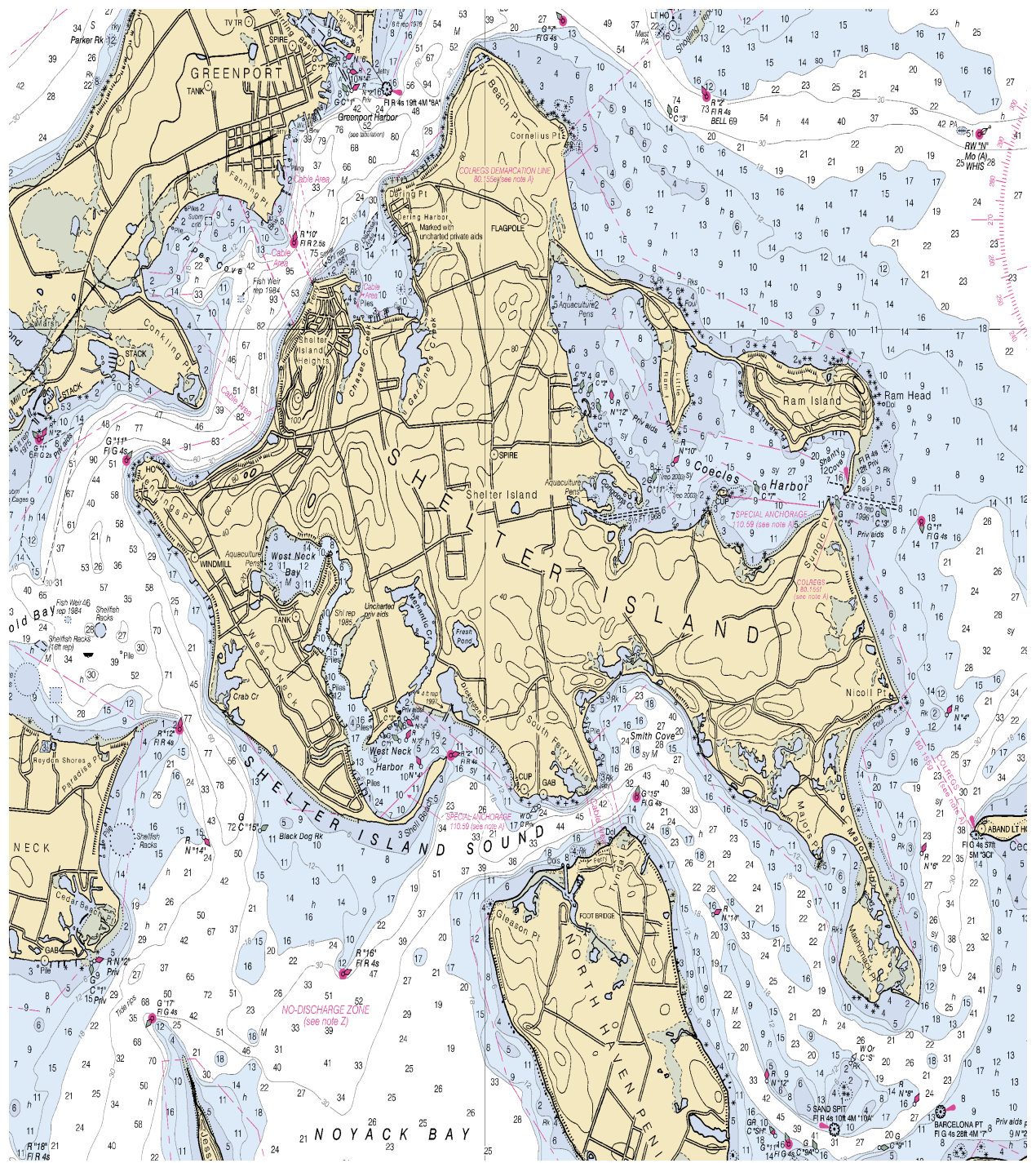
Primary Race Officer

[BMFbethfleisher@gmail.com](mailto:BMFbethfleisher@gmail.com)

646-732-1066

Southold Yacht Club phone for day of the event only: 631-765-5692

-end-



## Around Shelter Island 2024: Safety Boats

We are monitoring channel 77

- 1) Geoff Loffredo & Beth Fleisher RC/PRO & safety boat 646-732-1066
- 2) Jeff Oak, Nathaniel Oak/pin boat at start 703-475-8539
- 3) Gayle Sheridan, photographer
- 4) Kent Layton & Patrizia Zanaboni 631-478-5244 Kent is 631-478-5301
- 5) Mike Callanan 917-723-7766
- 6) Rob Finora 917.670.3194
- 7) Greg Young 917-847-6541
- 8) Steve & Melissa Shepstone Melissa Shepstone 203-206-1745
- 9) Jason Stock 516-655-5269
- 10) Jen Ammengual and Gene Im  
Jen - 516-641-8241  
Gene - 917-841-9355
- 11) Mark Campbell & Bobbyb Williamson 631 856 0481.
- 12) Nick Gazzolo, commodore of Breakwater 917-684-1216 – partial day, off Sag Harbor to South Ferry
- 13) **JC Merrill** - 516-807-4271 on his boat
- 14) **Peter Gianopulos** [peterg@asrny.com](mailto:peterg@asrny.com) on his boat. (Half day PM) .  
917.560.3360
- 15) **Steve Cheng & Meg Vaden** - on their boat ( half day in the AM) Meg 917-386-4914 Steve - 917-856-9569
- 16) **Susan & Peter Honig** - - on their boat ( half day in the AM) Susan -703-850-0835 Peter Honig -- 267-642-8531
- 17) **Jim Schultz** WHYS sailing director 631-680-9407