



2024 SWYC Charity Bay Race

Benefiting ElderHelp of San Diego

Sailing Instructions



June 23, 2024

1. RULES

- 1.1 Local Advisory: All competitors are asked to observe USCG Navigational Rule 9, which in part reads, "A vessel shall not cross a narrow channel or fairway if such crossing impedes the passage of a vessel which can safely navigate only within such channel or fairway." RRS 60.2, 63.1, and A5 are modified to add that the Race Committee (RC) may disqualify a boat infringing this instruction without a hearing.
- 1.2 [DP] NAVAL and CRUISE SHIP PROTECTION ZONE: A naval protection zone exists in a radius of 500 yards (CFR 165.2015) around U.S. naval vessels greater than 100 feet in length, except when the large naval vessel is moored or anchored within a restricted area. All vessels within a naval vessel protection zone shall operate at the minimum speed necessary to maintain a safe course and shall proceed as directed by an official patrol, and when within such zone, no vessel is allowed within 100 yards of a large U.S. naval vessel (CFR 165.2030).
- 1.3 Entry into the NAS North Island Security Zones is prohibited. These zones include 100 yards around Pier Bravo ("ammo pier") and vessels moored to it (CFR 165.1105) and the aircraft carrier turning basin (CFR 165.1104).
- 1.4 Per RRS 42.3(i), competitors may use an engine or other propulsion method to avoid situations in SI 1.1 or 1.2, provided they gain no significant advantage in the race.
- 1.5 Add new rule 41(e): (e) help to recover from the water and return on board a crew member, provided the return on board is at the approximate location of the recovery.
- 1.6 If the RC boat is damaged because of a boat breaking a rule, that boat shall be responsible for repairs.

2. CHANGES TO SAILING INSTRUCTIONS

- 2.1 Any change to these sailing instructions (SIs) will be posted by 0900 on the day it will take effect, except that any change to the schedule of races will be posted by 2000 on the day before it will take effect.
- 2.2 In accordance with RRS 90.2 (c), oral changes to the Sailing Instructions may be made on the water. A change is in effect when the Race Committee (RC) signal boat displays Flag L over A with one sound signal. This means come within hail of the RC boat to receive the oral changes to the Sailing Instructions.

3. COMMUNICATIONS WITH COMPETITORS

- 3.1 Official notices and amendments will be available on the [event page](#) on the SWYC website.
- 3.2 On the water, the RC will monitor and communicate with competitors on VHF radio channel 68. Please contact them to notify of a boat's intent to withdraw from racing per SI 17.1.
- 3.3 **In the event of an on-the-water emergency, first contact the US Coast Guard on VHF Channel 16 directly and immediately, then contact the Race Committee.**

4. CODE OF CONDUCT

4.1 [DP] Competitors and support persons shall comply with reasonable requests from race officials.

5. SCHEDULE OF RACES

5.1 One pursuit race is scheduled for Sunday, June 23, 2024.

5.2 The first warning is scheduled for 1155.

5.3 Starting times for each boat, based upon course distance and final (Buy Up/Buy Down adjusted) RLC ratings, will be posted as an amendment to these sailing instructions after registration closes and before 1800 on Saturday, June 22, on the [online event site](#). The first start will be at 1200.

6. ENTRIES & CHECK IN

6.1 Class pennants (ribbon, yarn, colored tape, etc.) must be supplied by each boat and displayed from the backstay. Boats without backstays shall display their pennants in a prominent manner near the stern.

Class 1	Open A	Blue
Class 2	Open B	Yellow
Class 3	SWRF	Green
Class 4	Novice (first time racer)	Purple

Boats will have completed their Check-in when they pass by the RC boat to starboard, hail their sail number and class, and are acknowledged by the RC boat, while clearly displaying their sail number and backstay pennant (anything of the proper color on backstay, or at stern of boat if there is no backstay).

6.2 [DP] Each boat shall check-in at least 10 minutes before its scheduled starting time.

THERE WILL BE NO RADIO CHECK-IN.

7. RACING AREA

7.1 The racing area covers the general locale known as San Diego Bay. The starting area will be in the vicinity of the east end of Harbor Island. The finish area will be near SD 17. For navigation, refer to NOAA Chart #18773, San Diego Bay.

8. COURSE

8.1 Reverse pursuit start times will be posted to the [event page](#) by 1800 on Saturday, June 22.

8.2 All marks listed are considered rounding marks. Marks are to be rounded to port.

8.3 2024 Charity Bay Race Course - Open and SWRF Classes only*

Start "S" (east end of Harbor Island)

SD 19

SD 24

FM 19

SD 20

SD 21

Finish (between blue flag on the RC boat and SD17).

**Shorter Novice class course to be posted as an amendment to these Sis, based on entries.*

9. MARKS (NOAA Chart #18773)

"S" YELLOW inflatable tetrahedron buoy, near east end of Harbor Island
FM 19 Concrete fleet mooring buoy SSE of the east end of Harbor Island
SD 17 Green navigation buoy
SD 19 Green navigation buoy
SD 20 Red navigation buoy
SD 21 Green navigation buoy
SD 24 Red navigation buoy

10. THE START

- 10.1 The race will use a pursuit starting system. This changes RRS 26 with only the first boat getting warning, preparatory, and starting signals. Starting times will be staggered according to handicaps after *Buy Up/Buy Down* adjustments. Starting times will be available as an Amendment to these Sailing Instructions and will be posted no later than 1800 on Saturday, June 22.
- 10.2 The first Warning signal (green flag) will be at 1155.
- 10.3 The first start will be at 1200.
- 10.4 Starting Penalties: Rule 30.1 ("I" Flag Rule) will apply to all starts. Once it is raised as the preparatory signal, the "I" flag will remain on display throughout the starting process until all boats have started. This changes RRS 26.
- 10.5 After the first start, signal flag "P" will be hoisted, with one sound, for one minute, every 10 minutes after the first start at 1210, 1220, 1230, etc. as a courtesy time check.
- 10.6 The Starting Line will lie between a staff with an orange flag on the RC boat and an inflatable buoy ("S" Mark) near the RC boat.
- 10.7 An inflatable distance buoy may be streaming from the RC boat and this buoy is considered part of the RC boat. For purposes of RRS 31.1 (Touching A Mark), this buoy is to be considered a permanent part of the starting mark.
- 10.8 Boats shall keep clear of the starting area and boats attempting to start, until within 4 minutes of her own start.
- 10.9 All motors must be off 4 minutes before that boat's start time.
- 10.10 For each subsequent boat starting, the RC will sound a whistle at that boat's assigned starting time.
- 10.11. The RC may postpone the race per RRS 27.3. In the event of postponement, the RC will announce the amount of delay, which will be a multiple of 10 minutes. Each boat is expected to add the announced delay amount to her published starting time.

11. RECALLS

- 11.1 If any part of a boat's hull is on the course side of the starting line at her starting signal and she is identified, the RC will hail her sail number as soon as possible on VHF 68. It is the responsibility of each boat to start properly.
- 11.2 Failure to hail her number, failure of her to hear such a hail, or the order in which boats are hailed will not be grounds for a boat's request for redress. This changes RRS 62.1(a).
- 11.3 Individual recalls will be signaled in accordance with RRS 29 with a horn for a sound signal, except the Code Flag X will not be flown as to lessen confusion for other starters. This modifies RRS 29.1 and "Race Signals."

12. THE FINISH

12.1 The finishing line is between a staff with a blue flag on the RC boat and SD17.

13. PENALTY SYSTEM

13.1 RRS V1, Penalty at the Time of the Incident, shall apply: "The first two sentences of Rule 44.1 are changed to: 'A boat may take a One-Turn Penalty when she may have broken one or more rules of Part 2 or Rule 31 in an incident while racing. However, when she may have broken one or more rules of Part 2 while in the zone around a mark (not starting mark), her penalty shall be a Two Turns Penalty.'"

14. TIME LIMIT

14.1 If no boat has finished the race in progress by 1600, the race will be abandoned. Any boat still racing and not finished prior to 1600 will be recorded as DNF. This modifies RRS 35, A4 and A5.

15. HEARING REQUESTS

15.1 RRS 61 is modified to add this additional requirement: A boat intending to protest shall report her intentions and the boat(s) being protested to the RC boat on station upon finishing or retiring and obtain RC acknowledgment. Radio reports of protests are only accepted from boats that are retiring from the race.

15.2 The Protest Time Limit expires 60 minutes after the RC boat docks. The Protest Time Limit will be posted on the online event notice board.

15.3 Written protests may be filed electronically or in person to any member of the SWYC RC. Protests filed electronically may be sent to the SWYC Protest Chair at protests@southwesternyc.org. The US Sailing App is an excellent tool for this purpose.

15.4 An arbitration meeting may be held prior to a protest hearing according to RRS Appendix T for breaches of the rules of Part 2 or rule 31 where there is no damage or injury, if a USSA Certified Judge is available. Protests not resolved through arbitration will be referred to the Protest Committee for a hearing.

16. SAFETY REGULATIONS

16.1 [DP] A boat that retires from a race shall notify the race committee at the first reasonable opportunity. Informing the RC can be accomplished by either (a) sailing (motoring) past the RC boat OR (b) radioing the RC boat (VHF 68).

16.2 Notwithstanding any safety requirements, the ultimate safety of a boat and her crew is the sole and inescapable responsibility of the owner or charterer. They must do their best to ensure that the boat is fully sound, thoroughly seaworthy and manned by an experienced crew who are physically fit to face bad weather. They must be satisfied as to the soundness of hull, spars, rigging, sails and all gear. They must ensure that all safety equipment is properly maintained and stowed, and that crewmembers know where it is stowed and how it is used.

17. RACE RESULTS & TROPHY AWARDS

- 17.1 SWYC invites all participants to enjoy the facilities and hospitality of the club at the Award Ceremony and BBQ (2 tickets with registration, additional meal tickets available) following the racing, held on the lawn at SWYC around 1630.
- 17.2 Race results will be published on the [online event page](#) and on the [SWYC website](#).
- 17.3 Regatta prizes will be awarded using the listed procedure: one prize in each class of 2 - 4 boats, two prizes for 5 - 7 boats, three prizes for 8 or more, based on the number of starters in each class.
- 17.4 The **Jerry Beeman Perpetual Trophy** shall be awarded to the overall winner for boats from the Open classes based on original PHRF ratings.

18. DISCLAIMER OF LIABILITY

- 18.1 Sailing is an activity that has an inherent risk of damage and injury. Competitors in this event participate entirely at their own risk. See RRS 3, Decision to Race. The race organizers (SWYC, race committee, protest committee, host club, sponsors, or any other organization or official) will not be responsible for damage to any boat or other property or the injury to any competitor, including death, sustained as a result of participation in this event. As a condition of their participation in this regatta, competitors release all claims they may have against SWYC and its officers, directors, members, committees and employees for damage to property, personal injury or death sustained in conjunction with or prior to, during or after the regatta. Competitors shall be responsible for damage or injury caused by their breach of The Racing Rules of Sailing or applicable governmental rules for the avoidance of collision.

19. FURTHER INFORMATION

- 19.1 Contact Jerry M. Lewis, SWYC Sail Fleet Captain and Charity Bay Race chair at (530) 305.0533 or email: jerrymlewis@cox.net

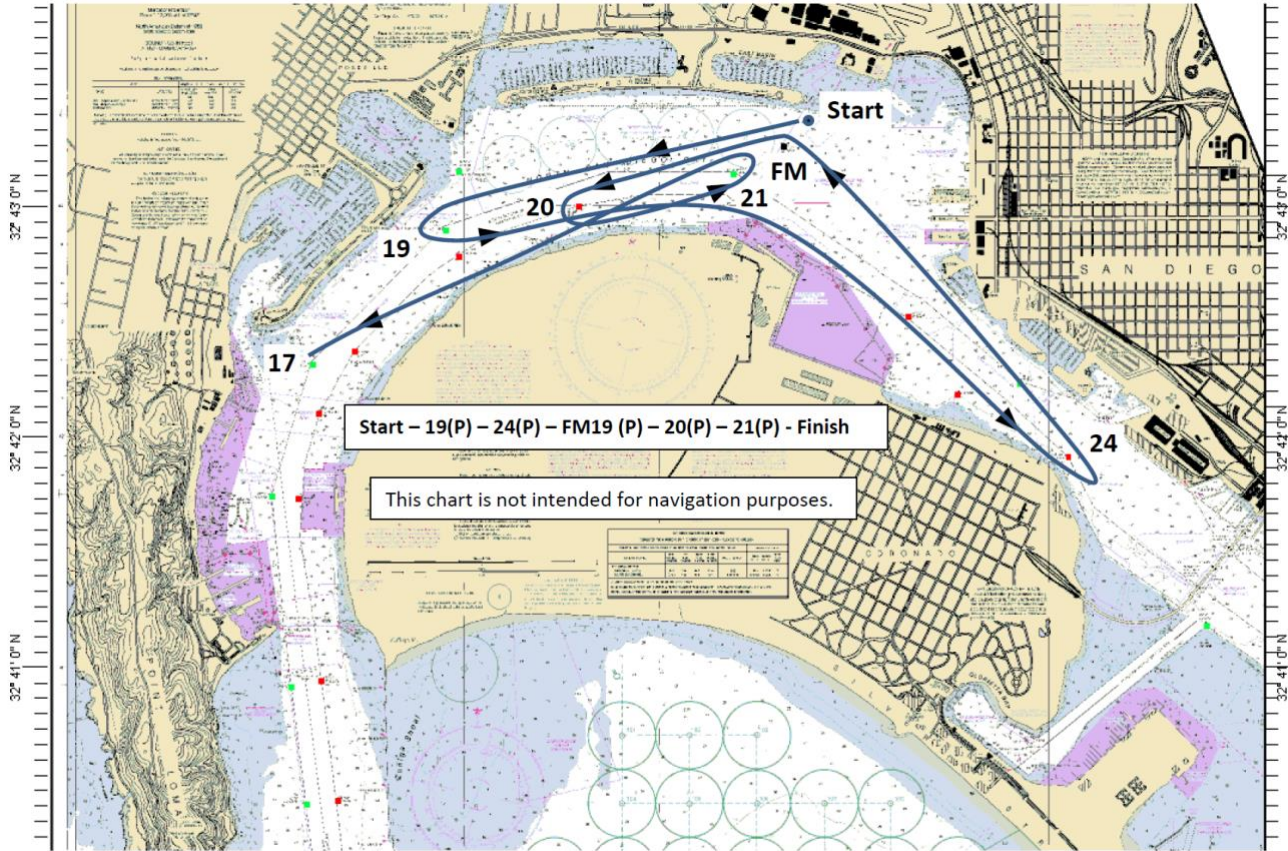


Chart Name: SAN DIEGO BAY
Chart ID: 18773 1
Top Left: 32° 43' 52" N 117° 15' 9" W
Bottom Right: 32° 40' 12" N 117° 8' 53" W

© MAPTECH, INC.