



Jr. CanAm Challenge

July 16-17, 2024

Youngstown Community Boating, Organizing Authority

491 Water Street

Youngstown, NY 14174

<https://youngstowncommunityboating.com>

SAILING INSTRUCTIONS

1. RULES

The regatta will be governed by the rules as defined by the Racing Rules of Sailing (RRS), the rules of the Club 420, Laser (ILCA-NA), and Optimist classes.

2. NOTICES TO COMPETITORS

Notices to competitors will be posted on the official notice board located on the river side of the Junior Sail Building.

3. CHANGES IN SAILING INSTRUCTIONS

Any change to the sailing instructions will be posted before 0900 on the day they take effect, except any change to the schedule of races will be posted by 2100 on the day before it will take effect.

4. SIGNALS MADE ASHORE

4.1. Signals made ashore will be in accordance with Race Signals and displayed at the RYC Club House main flag pole, located in the North West corner of the property.

4.2. Flag "AP", with two horn signals (one horn signal when lowered) means, "The race is postponed, do not launch or leave the harbor while the AP flag is flying". The first warning signal will be made not less than 60 minutes after flag AP is lowered. This changes Race Signals.

5. RACING AREA

5.1. The C420 and ILCA Fleets will race in area 2 approximately 1 nm North East of the River entrance as shown in Attachment A – Racing Area, attached.

5.2. The Optimist Champ fleet will race in area 1 approximately 1 nm East of the river entrance as shown in Attachment A – Racing Area, attached. The Optimist Green fleet will race either area 1 on the same course or in area 3, depending on the weather conditions.

5.3. All boats are reminded that the Niagara River is a restricted channel, and sailing vessels do NOT have right-of-way over vessels under power that may be restricted in their ability to maneuver. Participation in this regatta does NOT provide standing over vessels that have right-of-way. Boats are reminded of the strong current and to be aware of the mooring field.

6. SAFETY REGULATIONS

6.1. CHECK-IN: Competitors are strongly encouraged to check in with the race committee signal boat before the warning signal of the first race each day.

6.2. CHECK-OUT: A boat retiring from a race shall notify a race committee boat or a safety boat before leaving the course.

6.3. The display of Code Flag “F” (white with red diamond) before the warning signal with one horn means “Spinnakers shall not be used for the race”. This instruction may be replaced with a verbal hail by the race committee.

7. THE COURSES

7.1. Attachment B — Course Diagrams (attached) shows the courses, the order of rounding, and the side on which each mark is to be rounded or passed.

7.2. With or before the warning signal, the race committee signal boat will either display the identifying number of the course (1, 2, or 3) using a board or flag displaying that number, or make a verbal hail to that effect.

8. MARKS

8.1. Marks may be balls, tetrahedrons or cylinders.

8.2. For Courses 1 and 2, if the Optimist Green fleet is racing in area 1 with the Optimist Champ fleets, they will have a shorter windward mark set.

9. THE START

9.1. Races will be started in accordance with RRS Appendix U – Sound-Signal Starting System (3 minute sequence). This changes RRS 26.

9.2. The starting line will be between a staff displaying an orange flag on the race committee signal boat and the starting/finishing mark.

9.3. For racing areas with multiple classes, starting order will be indicated using Class Flags, which are listed in Attachment B. The starting order may be different for each race. The warning signal for a succeeding class will be made at any time following the start signal for the preceding start.

9.4. Boats whose warning signal has not been made shall keep clear of the starting area and of all boats whose warning signal has been made.

9.5. The race committee intends to hail the sail numbers of OCS boats after the starting signal. Failure to hail a number, failure of a boat to hear such a hail, or the order in which boats are hailed will not be grounds for redress. This changes RRS 62.1(a)

9.6. A boat shall not start later than three minutes after her starting signal. Boats starting later than three minutes after their start will be scored DNS.

10. THE FINISH

10.1. The finishing line will be between a staff displaying an orange flag on the race committee signal boat and starting/finishing mark.

10.2. If the Race Committee intends to start another race on the same day, it will communicate verbally with sailors and coaches.

10.3. A boat intending to protest or request redress based on an incident in the racing area that she is involved in or sees shall, at the first reasonable opportunity after she finishes, but before consultation or discussing the incident with any coach, parent or non-competitor, inform the race committee at the finishing line of her intent to protest or request redress and, when applicable, the identity of the protestee.

11. TIME LIMIT

11.1. The target time for each race is 30 minutes. Failure to meet the target time will not be grounds for redress. This changes RRS 60.1(b) and 62.1(a).

Abandonment of a race due to excessive time is at the discretion of the Race Committee.

11.2. Boats failing to finish within 10 minutes after the first boat sails the course and finishes will be scored "TLE" Time Limit Expired without a hearing. This changes RRS 35, A4 and A5.

11.3. The Race Committee reserves the right to finish boats "in place" if doing so will prevent substantial delays in subsequent races.

12. HEARING REQUESTS (PROTESTS)

12.1. The Protest Time Limit is 30 minutes after the time of the docking of the race committee signal boat for that competitor's course. If a protest is to be lodged the Regatta Chair must be notified within the time limit.

12.2. Protests will be adjudicated via "2 Minute Justice" format with a jury composed of uninterested parties selected by the Regatta Chair.

13. SCORING

13.1. One (1) race is required to be completed to constitute a series.

13.2. When fewer than five (5) races have been completed, a boat's series score will be the total of her race scores. This changes RRS A2

13.3. When five (5) or more races have been completed, a boat's series score will be the total of her race scores excluding her worst score.

14. PROHIBITED SUBSTANCES

14.1. For Junior and Youth events or for junior or youth competitors in any US Sailing championship, no participant or competitor shall use, either on or off the water: marijuana or any other controlled substance (as defined in 21 U.S. Code 802) the possession of which is unlawful under 21 U.S. Code 841, or alcoholic beverages (distilled spirits, wine and beer, each as defined in chapter 51 of the U.S. Internal Revenue Code and intended for beverage use).

14.2. An alleged breach of one of these regulations shall not be grounds for a protest. However, when the protest committee believes that a competitor may have breached one of these regulations, it shall follow the process described in racing rule 69.1, and a competitor found to have breached one of these

regulations shall be excluded from the remaining races of the series and, where practicable, removed from the regatta venue and sent home. The competitor's boat shall be disqualified from all races of the series.

15. SUPPORT BOATS

15.1. Team leaders, coaches and other support boats and personnel shall stay outside areas where boats are racing from the time of the preparatory signal until all boats have finished or retired or the race committee signal a postponement, general recall or abandonment, UNLESS directed by the race committee. The penalty for failing to comply with this requirement may result in disqualification of all boats associated with the support personnel who do so.

15.2. Coaches and other support personnel are required to wear fully secured PFDs while on the water.

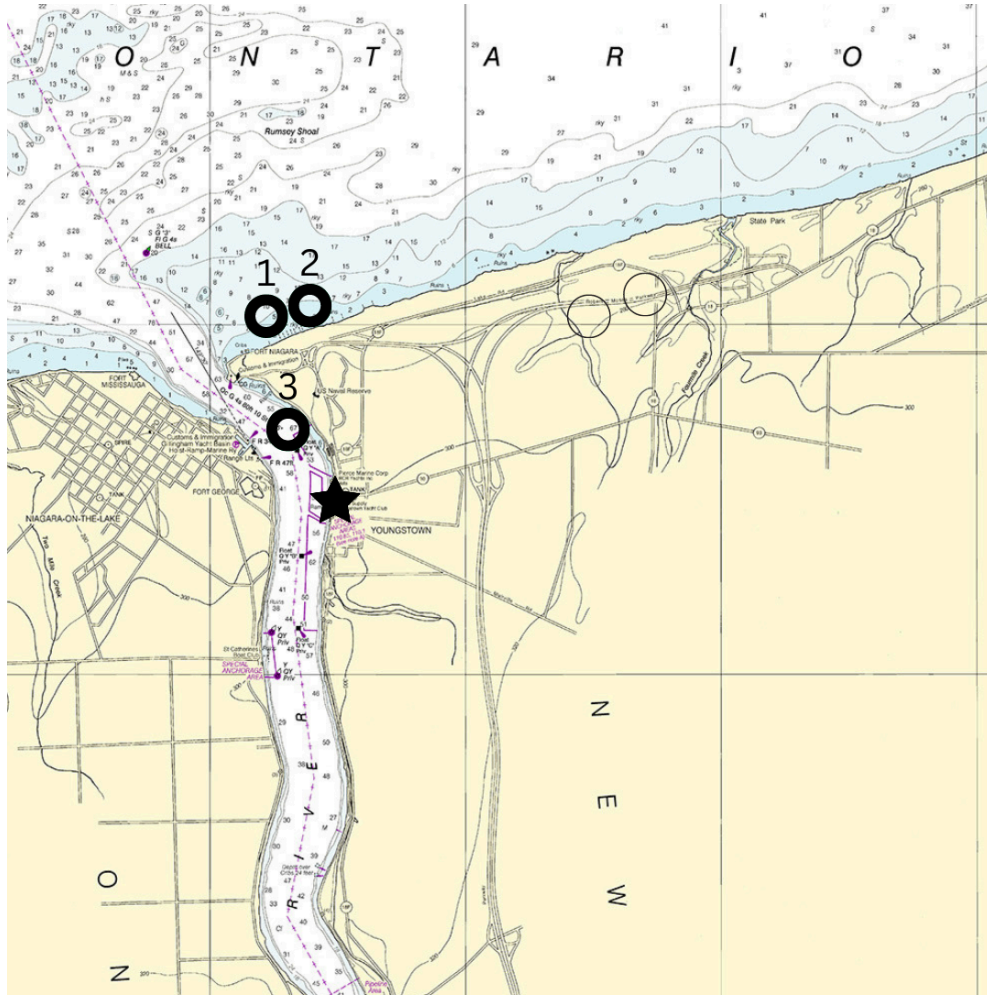
15.3. All coach boats and other support boats/support personnel must agree to aid any competitor in distress or requesting assistance of any sort.

16. DISPOSAL OF TRASH

Boats observed purposefully discharging trash into the water will either be disqualified from all races the day the infraction is observed, be subject to other suitable disciplinary action, or both.

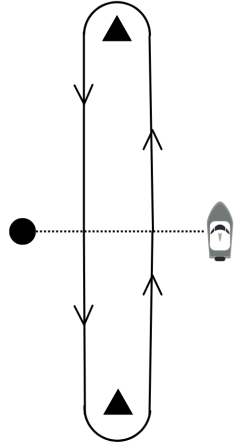
ATTACHMENT A
RACING AREA

- 1- Opti Champ & Opti Green*
 - 2- C420 & ILCA
 - 3- Opti Green*
- * Weather dependent

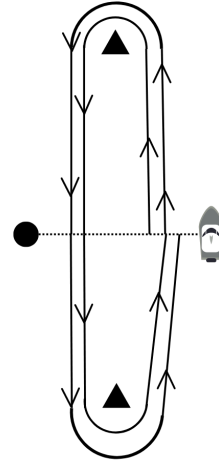


ATTACHMENT B
COURSE DIAGRAMS

Course #1- W/L/W



Course #2- W/L/W/L/W



Course #3- W/R/L/W

