



# **Maker's Mark**<sup>®</sup>

2024 GBCA ORC Championship  
September 7-8, 2024

Organizing Authority: Galveston Bay Cruising Association  
Clear Lake Shores, TX USA

## **SAILING INSTRUCTIONS**

### **1 RULES**

- 1.1 The event is governed by the *rules* as defined in *The Racing Rules of Sailing (RRS)*.
- 1.2 The latest version of the following rules will also apply:
  - 1.2.1 – IMS Rules
  - 1.2.2 – ORC Rating System Rules
- 1.3 The notation “[DP]” in a rule in these Sailing Instructions means that the penalty for a breach of a rule may, at the discretion of the protest committee, be less than disqualification.
- 1.4 In the event there are any conflicts between the NOR and these Sailing Instructions (SIs), these SIs shall prevail.

### **2 CHANGES TO SAILING INSTRUCTIONS**

- 2.1 Any change to the sailing instructions will be posted before 08:00 on the day it will take effect, except that any change to the schedule of races will be posted by 20:00 on the day before it will take effect.
- 2.2 Changes to a sailing instruction may be made on the water by the race committee flying Flag L and hailing all competitors via VHF radio with the change.

### **3 COMMUNICATIONS WITH COMPETITORS**

- 3.1 Notices to competitors will be posted on the official notice board, which shall be on the online Regatta Network Regatta site at:  
[https://www.regattanetwork.com/event/28348#\\_newsroom](https://www.regattanetwork.com/event/28348#_newsroom)

- 3.2 On the water, the race committee intends to monitor and communicate with competitors on VHF radio channels 69.
- 3.3 The following communications *may* be made by the race committee on VHF.
- Race Course to be sailed
  - Windward mark bearing and distance
  - General Race Committee intentions
- 3.4 Prior to the warning signal for each race, the race committee intends to announce the applicable Triple Number factor to be used for that race. The appropriate Triple Number (All-purpose, Windward/Leeward, Predom. Upwind, Predom. Downwind, etc.) will be determined at the Race Committee's discretion by observance of the prevailing conditions over the course of the race and shall not be grounds for redress. This changes Rule 62.1.
- 3.5 [DP] While racing, except in an emergency, a boat shall not make voice or data transmissions and shall not receive voice or data communication that is not available to all boats.

#### **4 CODE OF CONDUCT**

- 4.1 [DP] Competitors and support persons shall comply with reasonable requests from race officials.
- 4.2 [DP] Competitors and support persons shall handle any equipment provided by the organizing authority with care, seamanship, in accordance with any instructions for its use and without interfering with its functionality.

#### **5 SIGNALS MADE ASHORE**

- 5.1 Signals made ashore will be displayed on the official notice board, which shall be on the online Regatta Network Regatta site at:  
[https://www.regattanetwork.com/event/28348#\\_newsroom](https://www.regattanetwork.com/event/28348#_newsroom)
- 5.2 When flag AP is displayed ashore, '1 minute' is replaced with 'not less than 60 minutes' in Race Signals AP.

#### **6 SCHEDULE OF RACES**

##### 6.1 Schedule

Date	Time	Event
Friday, September 6 <sup>th</sup>	19:00	Competitors briefing, in-person at the GBCA Clubhouse (virtual link to be provided)
Saturday, September 7 <sup>th</sup>	10:00	First warning signal, additional races to follow.
Saturday, September 7 <sup>th</sup>	18:00	Daily Awards, BBQ Dinner, Cash Bar at

	(est)	Coco's on the Canal (624 Marina Bay Drive, Kemah)
Sunday, September 8 <sup>th</sup>	10:00	First warning signal, additional races to follow.
Sunday, September 8 <sup>th</sup>	15:00	No warning signal after this time
Sunday, September 8 <sup>th</sup>	17:00 (est)	Post-race social and awards at GBCA Clubhouse

6.2 To alert boats that a race or sequence of races will begin soon, the orange starting line flag will be displayed with one sound at least five minutes before a warning signal is made.

## 7 CLASS FLAGS

7.1 The primary class flag will be Red.

## 8 RACING AREA

8.1 SI Addendum #1 shows the location of the racing area.

## 9 COURSES

9.1 The diagram(s) in SI Addendum #2 show the course(s), the order in which marks are to be passed, and the side on which each mark is to be left.

## 10 MARKS

10.1 Mark(s) are orange or yellow tetrahedrons, red spheres, and various fixed marks as outlined below.

10.2 For Distance Courses, the following rounding marks may be used:

- Start/Finish – Yellow Tetrahedron
- South Boat Cut - #8 - 29° 32.417'N 94° 55.080'W
- GBCA "H" - 29° 33.255'N 94° 56.542'W
- GBCA "E" - 29° 35.787'N 94° 56.935'W
- GBCA "F" - 29° 34.671'N 94° 56.518'W

10.3 In the event a Mark is missing, a boat shall round the respective GPS coordinates.

10.4 For Windward/Leeward Courses, the following marks are rounding marks:

- Windward Mark – 8' Orange Tetrahedron
- Offset Mark – Red Sphere
- Leeward Gate – Orange Tetrahedrons

## **11 OBSTRUCTIONS**

- 11.1 The following area is designated as an obstruction: The Houston Ship Channel. Reference is made to NOAA Electronic Navigational Chart US5TX54M, Upper Galveston Bay-Houston Ship Channel-Dollar Pt. to Atkinson (1/29/2021).

## **12 THE START**

- 12.1 Races will be started using RRS 26 with the warning signal made 5 minutes before the starting signal.
- 12.2 The starting line is between a staff displaying an orange flag on the signal vessel at the starboard end and the course side of the port-end Starting Mark.
- 12.3 If any part of a boat's hull is on the course side of the starting line at her starting signal and she is identified, the race committee may attempt to hail her sail number. Failure to hail her number, failure of her to hear such a hail, or the order in which boats are hailed will not be grounds for a request for redress. This changes RRS 62.1(a).
- 12.4 A boat that does not start within 15 minutes after her starting signal will be scored Did Not Start without a hearing. This changes RRS A5.1 and A5.2.

## **13 CHANGE OF THE NEXT LEG OF THE COURSE**

- 13.1 To change the next leg of the course, the race committee will move the original mark or the finishing line to a new position.
- 13.2 The Race Committee may make minor adjustments by moving the original marks to new locations (up to 10 degrees and 0.1 NM in length) to the course during a race without signalling a course change. This changes RRS 33.
- 13.3 One or the other gate mark may be moved without signal to support the course configuration.

## **14 THE FINISH**

- 14.1 The finishing line is between a staff displaying an orange flag on the RC signal vessel and the course side of a nearby Finishing Mark.
- 14.2 If the race committee is absent when a boat finishes, she shall report her finishing time passing through a line extended at a 90-degree angle to the prevailing wind direction and from the Finishing Mark, which shall be left to starboard, and her position in relation to nearby boats, to the race committee at the first reasonable opportunity.

## **15 PENALTY SYSTEM**

### **15.1 The first two sentences of RRS 44.1 are changed to:**

**A boat may take a One-Turn Penalty when she may have broken one or more rules of Part 2 or Rule 31 in an incident while racing. However, when she may have broken one or more rules of Part 2 while in the zone around a mark other than a starting mark, her penalty shall be a Two-Turns Penalty.**

## **16 HEARING REQUESTS**

- 16.1 Any competitor intending to file a Protest or Request for Redress shall notify the Race Committee via VHF Radio prior to leaving the Racing Area.**
- 16.2 The protest time limit is 60 minutes after the committee boat signals with one sound entering the LYC harbor. These times will be posted on the official notice board.**
- 16.3 Paper hearing request forms are available at the GBCA clubhouse, however electronic filings using the US Sailing app are preferred by the protest committee. Please forward all filings to [may.chris.w@gmail.com](mailto:may.chris.w@gmail.com).**
- 16.4 The protest committee will endeavour to post the notice of protests and the hearing schedule within 30 minutes after the close of the deadline for filing protests. Notices and schedules will be posted on the official notice board.**
- 16.5 Notices of protests by the race committee, or protest committee will be posted to inform boats under RRS 61.1(b).**
- 16.6 Breaches of Sailing Instructions 6.2, 21, 22, and 24 will not be grounds for a protest or request for redress by a boat. This changes RRS 60.1(a)**

## **17 SCORING**

- 17.1 One race is required to be completed to constitute a regatta.**
- 17.2 A boat's regatta score is the total of her race scores without exclusion. This changes RRS A2.1.**
- 17.3 ORC boats will be scored Time on Time using the appropriate Triple Number data per each boat's certificate. The appropriate Triple Number (All-purpose, Windward/Leeward, Predom. Upwind, Predom. Downwind, etc.) will be determined at the Race Committee's discretion by observance of the prevailing conditions over the course of the race and shall not be grounds for redress. This changes Rule 62.1.**

## **18 SAFETY REGULATIONS**

- 18.1 Prior to the first warning signal each day, each boat is required to check in by passing the stern of the respective race committee vessel on starboard tack or via respective VHF channel.**
- 18.2 [DP] A boat that retires from a race shall notify the race committee at the**

first reasonable opportunity by VHF or cell phone.

18.3 Race Committee Contact: Chris May 713-591-8115

## 19 REPLACEMENT OF CREW OR EQUIPMENT

19.1 Each boat shall submit a crew list no later than September 6, 2024 at 22:00 hours. Crew lists shall include all crew members who will be on board at the start of the first race and may be amended up to the start of the first race. After this time no addition, deletion, or substitution shall be allowed without the prior approval of the Race Committee. Please submit to [may.chris.w@gmail.com](mailto:may.chris.w@gmail.com).

19.2 [DP] Substitution of damaged or lost equipment is not allowed unless authorized in writing by the race committee. Requests for substitution shall be made to the committee at the first reasonable opportunity, which may be after the race.

## 20 EQUIPMENT AND MEASUREMENT CHECKS

20.1 Each boat shall have a valid ORCi or ORC Club rating certificate.

20.2 A boat or equipment may be inspected at any time for compliance with the, notice of race and sailing instructions.

## 21 OFFICIAL VESSELS

21.1 Official vessels will be identified with either the traditional race committee flag (red, fouled anchor on a blue field with red letters "R" and "C"), or GBCA burgee.

## 22 TRASH DISPOSAL

23.1 Trash may be placed aboard official [or support person] vessels.

## 23 HAUL-OUT RESTRICTIONS

23.1 [DP] Boats shall not be hauled out during the event except with and according to the terms of prior written permission of the race committee.

## 24 DIVING EQUIPMENT AND PLASTIC POOLS

24.1 Underwater breathing apparatus and plastic pools or their equivalent shall not be used around keelboats between the preparatory signal of the first race and the end of the last race of the event.

24.2 Keelboats shall not be cleaned below the waterline by any means during the event.

25 **PRIZES**

- 25.1 Prizes will be given in each class based on number of entries as detailed in the Notice of Race.

26 **RISK STATEMENT**

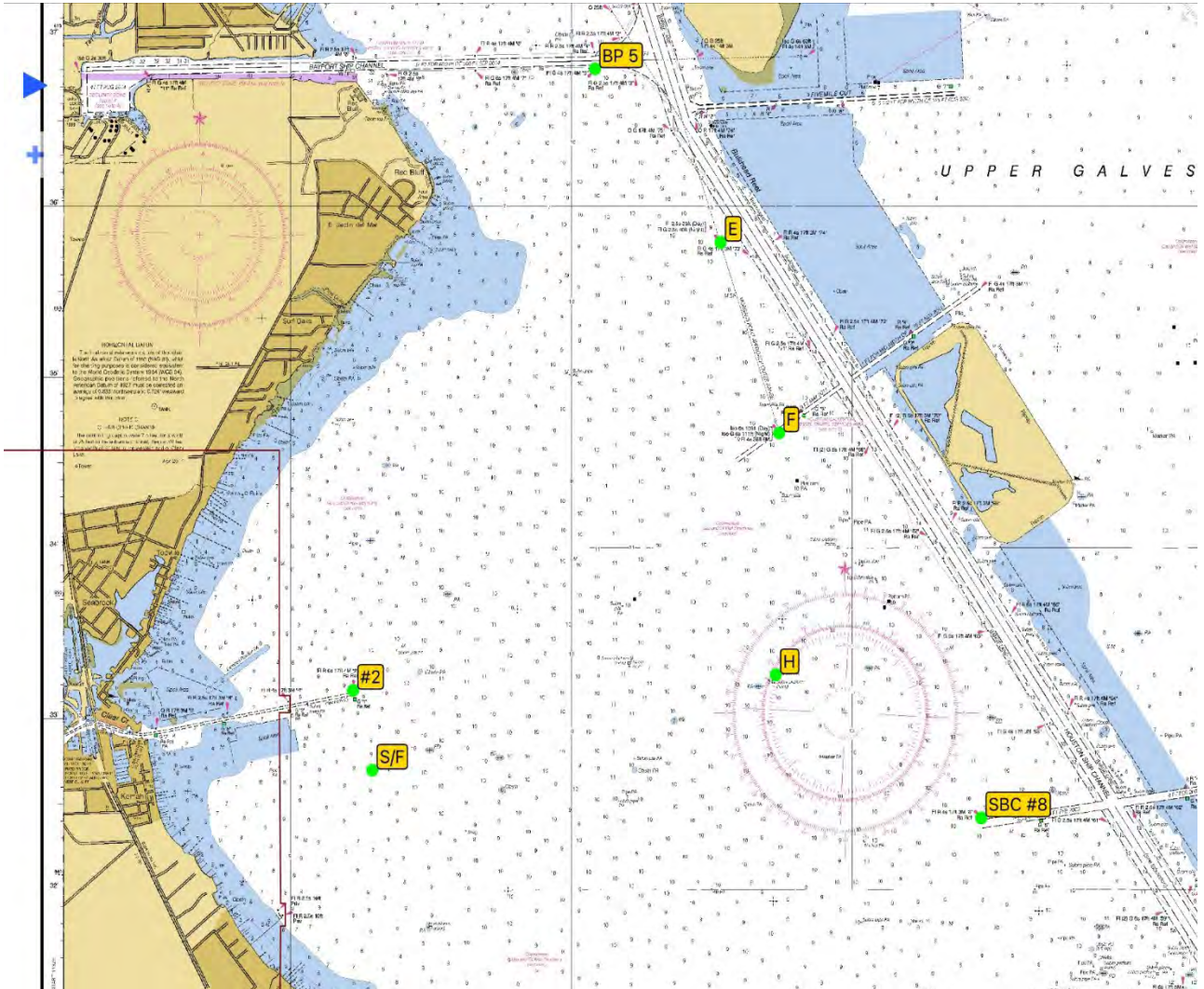
- 26.1 RRS 3 states: 'The responsibility for a boat's decision to participate in a race or to continue to race is hers alone.' By participating in this event each competitor agrees and acknowledges that sailing is a potentially dangerous activity with inherent risks. These risks include strong winds and rough seas, sudden changes in weather, failure of equipment, boat handling errors, poor seamanship by other boats, loss of balance on an unstable platform and fatigue resulting in increased risk of injury. **Inherent in the sport of sailing is the risk of permanent, catastrophic injury or death by drowning, trauma, hypothermia or other causes.**

27 **INSURANCE**

- 27.1 Each participating boat shall be insured with valid third-party liability insurance with a minimum cover of \$300,000 per incident or the equivalent.

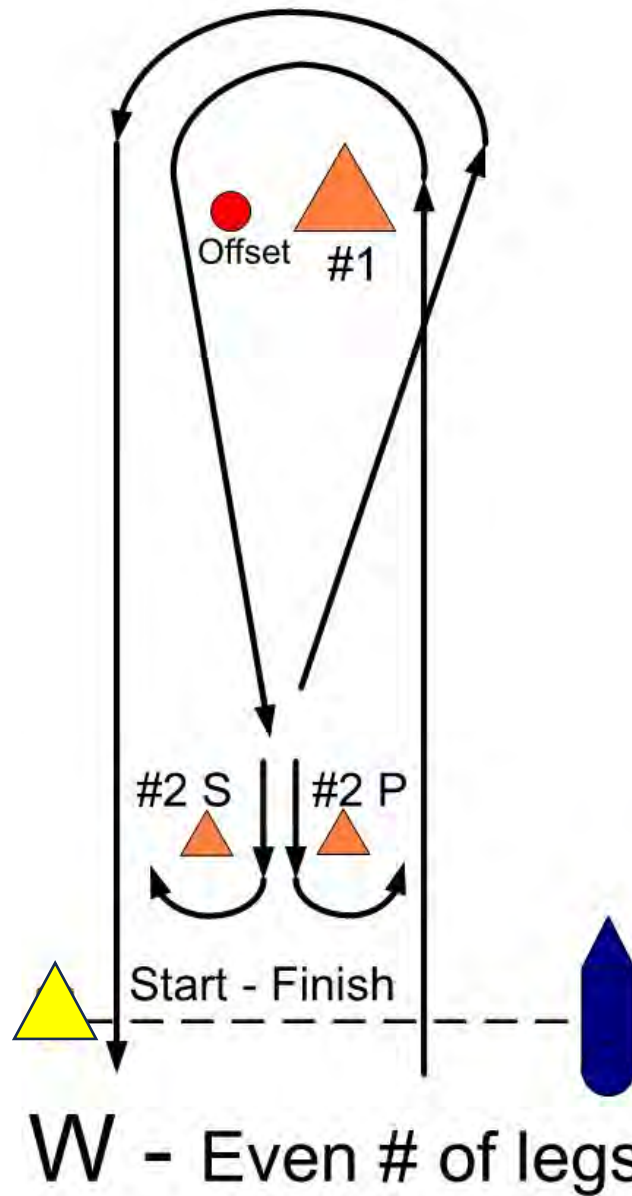
# SI ADDENDUM #1

## Race Area





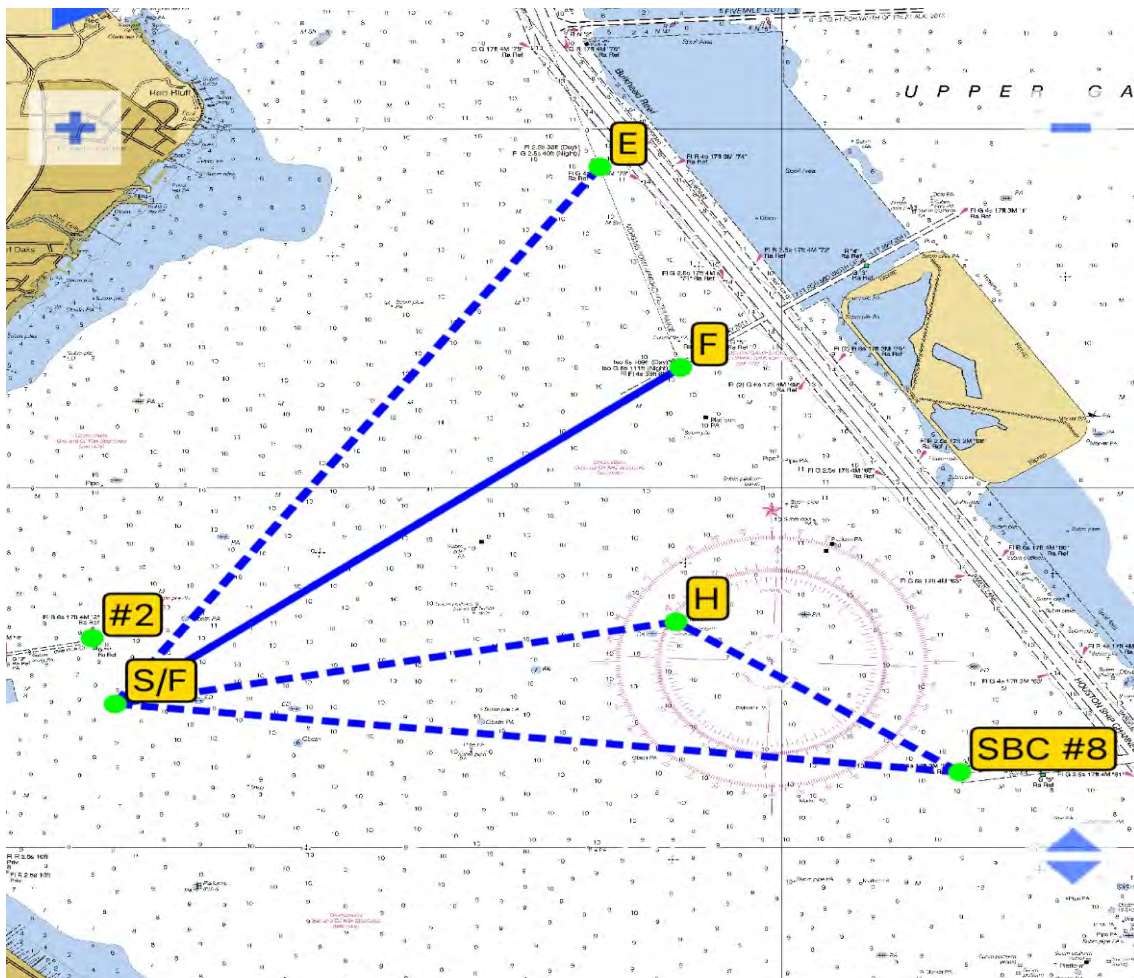
SI Addendum #2  
Windward/Leeward Course



A numeral pennant will be displayed no later than the warning signal designating # of legs to be sailed

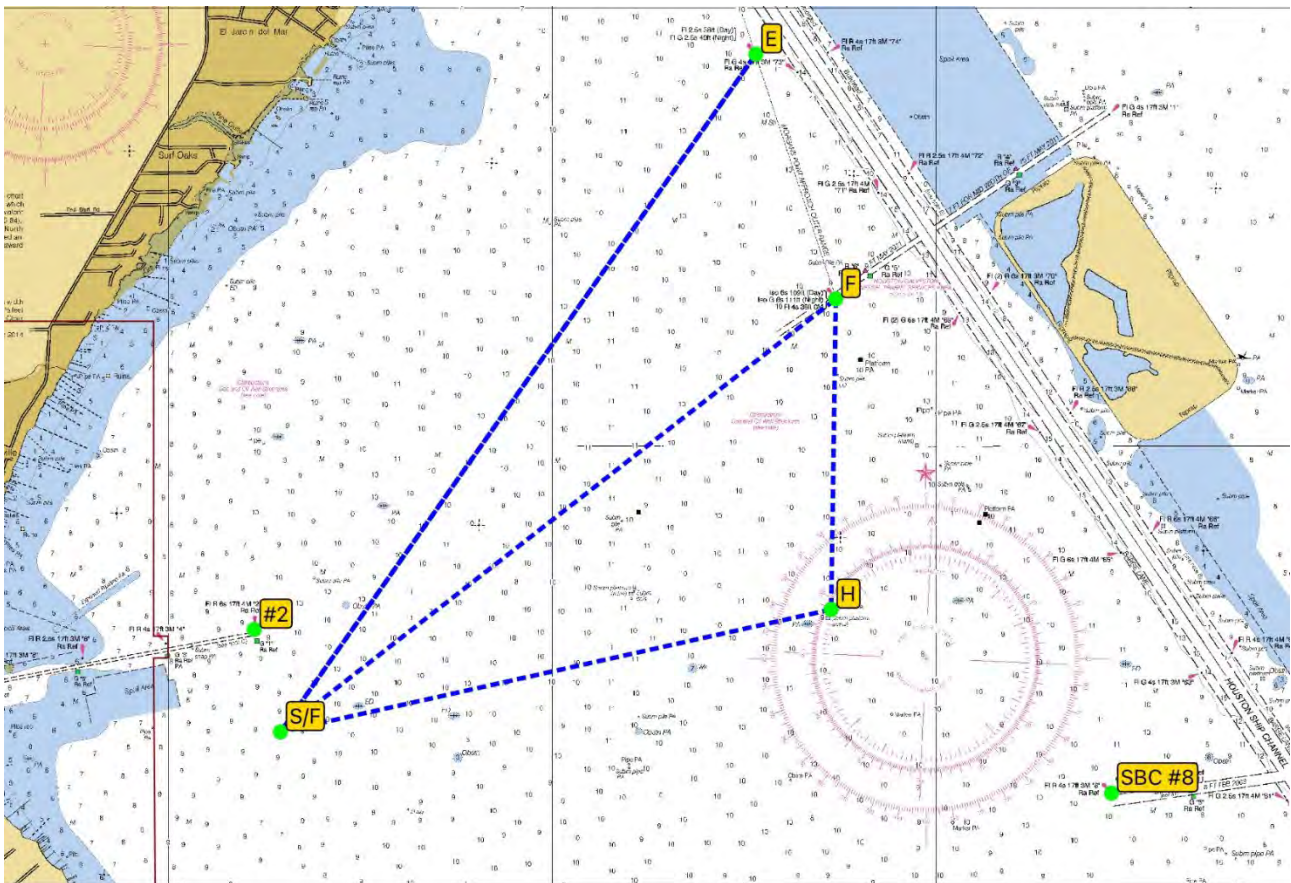
## Distance – Course 1

<u>Mark</u>	<u>Est. Distance (nm)</u>	<u>Leave Mark to:</u>
Start/Finish		
“E”	3.77nm	Port
Start/Finish	3.77nm	Port
“F”	3.20nm	Port
Start/Finish	3.20nm	Port
SBC #8	3.78nm	Port
“H”	1.52 nm	Port
Start/Finish	<u>2.56nm</u>	
Total Dist	21.58nm	



## Distance – Course 2

<u>Mark</u>	<u>Distance (nm)</u>	<u>Leave Mark to:</u>
<b>Start/Finish</b>		
<b>“E”</b>	<b>3.77</b>	<b>Port</b>
<b>Start/Finish</b>	<b>3.77</b>	<b>Port</b>
<b>“F”</b>	<b>3.2</b>	<b>Starboard</b>
<b>“H”</b>	<b>1.42</b>	<b>Port</b>
<b>Finish</b>	<b><u>2.56</u></b>	
<b>Total Dist.</b>	<b>14.71nm</b>	



### Distance – Course 3

<u>Mark</u>	<u>Distance (nm)</u>	<u>Leave Mark to:</u>
<b>Start/Finish</b>		
<b>“E”</b>	<b>3.77nm</b>	<b>Starboard</b>
<b>SBC #8</b>	<b>3.74nm</b>	<b>Starboard</b>
<b>Start/Finish</b>	<b><u>3.78nm</u></b>	
<b>Total Dist.</b>	<b>11.29nm</b>	

