



## SAILING INSTRUCTIONS

### The Wild Bill Rig Race

**Saturday, June 22, 2024**

Organizing Authority: Channel Islands Yacht Club  
4100 S Harbor Blvd, Oxnard, CA 93035 805.985.2492

- RULES:** This race will be governed by the *Racing Rules of Sailing (RRS)*. Any changes to the *rules* allowed by *rule 86* will be stated in the Sailing Instructions with the *rule* number and specific change.
- CHANGES TO THE SAILING INSTRUCTIONS:** Written changes to the Sailing Instructions will be posted online by 1800 of the evening before the event at <https://www.regattanetwork.com/event/28358>. Thereafter, changes to a sailing instruction on the water may be made only by hailing all competitors on VHF Channel 68 and/or displaying Signal Flag L, informing them of the change, and receiving confirmation from each competitor that they have heard and understood the change.
- RACING AREA:** The race will begin near the Mandalay race buoy and finish in the same area. Courses will be chosen from the 2024 Wild Bill Rig Race Course Chart (Attachment 1) with course distances between 9.9nm and 21.6nm and one or more oil platforms as marks of each course. Their associated mooring buoy(s) are also marks of the course.
- CLASSES:** PHRF Spinnaker, Non Spinnaker, and J/24 classes are welcome to participate. Class breaks and starting order will be announced during the Skippers Meeting. Class Flags will be numeral pennants beginning with “1.”
- SCHEDULE: Saturday, June 22, 2024**  
**0900** Skippers Meeting at CIYC  
**1100** First start at Mandalay Race buoy  
**1630** Post-race meal and awards presentation at CIYC
- RACEQS:** Each boat is encouraged to record its track using the “RaceQs” app for an (optional) addition to everyone’s enjoyment after the race. **Prior** to leaving the berth, download the “RaceQs” application on one crew member’s smart phone or tablet, open a free account, add the boat to the account, and select “Preset Start” to the race start time. After crossing the finish line, select “Stop Tracking,” and “Save & Upload” the boat’s track. For more information check out the RaceQs website: <https://raceqs.com>

## 7. THE START

- a. Prior to her start, each boat shall check in with the Race Committee (RC) by VHF radio (Channel 68) or by hailing the RC while sailing past the stern of the RC boat on a starboard tack
- b. Races will be started using Rule 26. The port end of the starting line is the Mandalay spar buoy, and the starboard end is an orange flag on the RC boat. Boats whose warning signal has not been made shall avoid the starting area.
- c. Although not required to do so, the RC *may* attempt to hail a boat if it is On Course Side (OCS) at its starting signal. Any boat that suspects it is OCS should exonerate herself without waiting for a recall flag or to be hailed.

## 8. THE FINISH

- a. The finish line will be between the Mandalay Race Buoy and the stack of the Mandalay Power Plant ashore
- b. Each boat will record her own finish time at the moment when her bow is within 3 boat-lengths shoreside of the buoy and her bearing to the stack is 72°T (59°M)
- c. Each boat will report her finish time to the RC by text (415.518.4046) as soon as practical after finishing
- d. A boat that starts but subsequently retires without finishing is asked to notify the RC at her earliest opportunity

9. **HEARING REQUESTS:** Hearing request forms shall be delivered to the RC within 1 hour of the finish of the boat requesting a hearing or within 1 hour of her return to her harbor if she retires. An electronically-fillable Hearing Request Form is available online at US Sailing ([https://cdn.ussailing.org/wp-content/uploads/2021/03/US\\_Sailing\\_Hearing\\_Request\\_Form\\_20210301\\_Fillable.pdf](https://cdn.ussailing.org/wp-content/uploads/2021/03/US_Sailing_Hearing_Request_Form_20210301_Fillable.pdf))

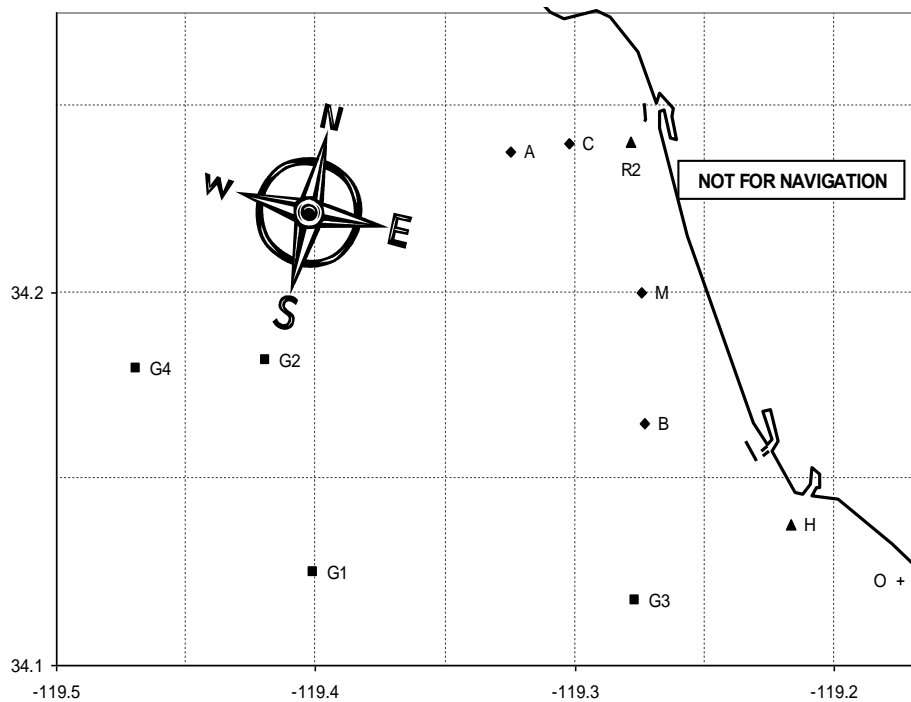
10. **SAFETY EQUIPMENT:** Each skipper is responsible for compliance with applicable US Sailing Safety Equipment Requirements for Nearshore. The RC reserves the right to disqualify nonconforming boats. All boats shall carry a VHF radio with Channels 16 and 68. The minimum number of persons aboard shall be 2. The RC will monitor VHF Channel 68 throughout the race.

11. **POST-RACE HOSPITALITY AND AWARDS:** The post-race party begins at approximately 1630 at CIYC with a hot snack, followed by presentation of individual race awards. The Wild Bill Rig Race Perpetual Trophy will be engraved with the winners' names and classes and displayed at CIYC. We will also attempt to view the combined RaceQs (<https://raceqs.com>) tracks from the day's race.

## Attachment 1

### 2024 WILD BILL RIG RACE - COURSE CHART

Course #	Distance (nm)	Race Marks & Rounding	Approx Bearing to 1 <sup>st</sup> Mark
1	9.90	Sm G3(p) Fm	181°T (168°M)
2	12.80	Sm G3(p) H(p) Fm	181°T (168°M)
3	15.33	Sm G1(p) Fm	234°T (221°M)
4	18.74	Sm G1(p) G3(p) Fm	234°T (221°M)
5	21.64	Sm G1(p) G3(p) H(s) Fm	234°T (221°M)
6	14.40	Sm G2(p) Fm	261°T (248°M)
7	19.34	Sm G4(p) Fm	263°T (250°M)
8	16.55	Sm A(p) G3(p) Fm	313°T (300°M)



Code	Marks	Approximate Location
A	Fish Sticks spar buoy	34° 14.5' N 119° 19.8' W
B	Wes Mark spar buoy	34° 09.9' N 119° 16.4' W
C	Chips spar buoy	34° 14.4' N 119° 18.2' W
H	Hueneme buoy	34° 08.3' N 119° 13.0' W
Sm/Fm	Start/Finish at Mandalay spar buoy	34° 12.0' N 119° 16.5' W
R2	Ventura R2 whistle buoy	34° 14.4' N 119° 16.7' W
G1	Platform Gail	34° 07.5' N 119° 24.0' W
G2	Platform Gilda	34° 10.9' N 119° 25.1' W
G3	Platform Gina	34° 07.0' N 119° 16.6' W
G4	Platform Grace	34° 10.8' N 119° 28.1' W
	Mandalay Power Plant Stack (ashore)	34° 12.38' N 119° 15.08' W