

2024 Heald Bank Regatta

August 31 – September 1, 2024

Organizing Authority: Bay Access Sailing Foundation

Hosted by Lakewood Yacht Club

2322 Lakewood Yacht Club Drive

Seabrook, TX 77586

SAILING INSTRUCTIONS

Rev. 2 Posted 08/29/24

Amendment 2 Changes in Red, Prior Changes in Green

1. *The notation '[DP]' in a rule in the Sailing Instructions (SI) means that the penalty for a breach of a rule may, at the discretion of the protest committee, be less than disqualification. The notation '[NP]' in a rule in the NoR means that a boat is not subject to protest by another boat under this rule; this modifies R.R.S. 60.1. The Race Committee may file a protest if it has reason to believe a boat has failed to abide by the requirements or rule.*

2. RULES

2.1 The regatta will be governed by the rules as defined in The Racing Rules of Sailing (RRS).

2.2 Between dusk and dawn the rules of Part 2 of the RRS (When Boats Meet) are replaced by the International Regulations for Preventing Collisions at Sea 1972 (COLREGs).

2.3 Racing Rules are changed as follows:

2.3.1 SI 11.1.4 changes RRS A5.

2.3.2 SI 15.2 changes RRS 35 and A5. (Scoring by RC)

2.3.3 SI 17.3 changes RRS 62.1(a), (ORC Three Factor and Redress)

2.3.4 SI 18.4 changes RRS 42. (Motoring to avoid Interfering with Commercial Traffic)

2.3.5 SI 18.5 changes 63.1. (Disqualification for Interfering with Commercial Traffic)

3. NOTICES TO COMPETITORS

Notices to competitors will be posted on the official notice board located online on the NEWSROOM & RESULTS MENU http://www.regattanetwork.com/clubmgmt/applet_notice_board.php?regatta_id=28365

3.1 CHANGES TO SAILING INSTRUCTIONS

3.2 Any written change to the sailing instructions will be posted before 0800 hours on the day it will take effect, except that any change to the schedule of races will be posted by 2000 hours on the day before it will take effect.

3.3 Oral changes to the sailing instructions may be given on the water by hail on VHF channel 72 in accordance with RRS 90.2(c). If oral changes are to be announced, they will be communicated during the 10-minute period before the scheduled time for the warning signal in section 5.3, below.

3.4 [DP] All competitors shall check-in with Race Committee via VHF channel 72 or preferably text message to 713-419-4329 prior to their start. Competitors shall include vessel name and number of persons on board.

3.5 Boats are encouraged to monitor VHF radio channel 13, “Bridge to Bridge”, while transiting the Galveston channel to remain aware of potential commercial traffic.

4. SIGNALS MADE ASHORE

4.1 Signals made ashore will be displayed via the Regatta Network event Notice Board: http://www.regattanetwork.com/clubmgmt/applet_notice_board.php?regatta_id=28365

4.2 In the event of signals made ashore, the Race Committee may also notify participants via SMS text message to the number provided at registration.

5. SCHEDULE OF RACES

5.1 The ~~non~~-mandatory Competitor’s Briefing will be held at 1800 CDT, August 29, 2024 at Lakewood Yacht Club. In person attendance is highly encouraged, but for those who wish to attend via video conference a link for online participation in the Competitor’s Briefing will be provided to all registered boats no later than 1800 CDT, June 22, 2024.

5.2 Dates of racing:

Saturday, August 31 - Sunday, September 1, 2024

5.3 Number of races: 1

5.4 The scheduled time for the warning signal for the first race is no earlier than 13:00:00 Central Daylight Time.

5.5 Awards will be presented on September 1, 2024 at Lakewood Yacht Club at 1130. Purchase of brunch is not required to participate in the awards ceremony. If protest(s) or weather conditions necessitate a change to the planned awards date/time the revised time will be posted on the Official Notice Board:

http://www.regattanetwork.com/clubmgmt/applet_notice_board.php?regatta_id=28365

6. CLASS FLAGS and ORDER OF START

6.1 One or more classes may be combined for Start. Race Committee will announce any combination of classes via VHF Channel 72 at 12:45:00.

6.2 Class flags and order of start will be:

<u>Class</u>	<u>Flag</u>
PHRF Non-Spinnaker, and/or PHRF Spinnaker	Pink
ORC-Spinnaker	Green
Multihull	Navy Blue

7. RACING AREAS

7.1 Attachment 1 shows the location of the racing area.

8. THE COURSES

8.1 Courses for each class will be announced by VHF prior to the start and designated by the signal flags in Attachment 2.

8.2 The diagrams in Attachment 2 provide mark locations and show the courses, including the approximate angles between legs, the order in which marks are to be passed, and the side on which each mark is to be left.

8.3 Courses will not be shortened.

8.4 Legs of the course will not be changed after the preparatory signal.

9. MARKS

9.1 Starting will be Houston Ship Channel Mark 11 (G11), G "11" Fl G 2.5s and an orange flag on the official signal vehicle or an orange tetrahedron located on the shore of Galveston Island to the South.

9.2 The finishing marks shall be G11 and a virtual mark located at the adjacent shoreline at a bearing of 205 deg. mag. from G11.

9.3 Rounding Mark locations are listed in a table in Attachment 2. If more than one structure is present then all structures shall be left to the side of the boat indicated.

9.4 In the event a mark is missing, boats shall round the GPS coordinates provided. Upon arrival at the missing mark, all boats should photograph the Coordinate Readout on their GPS and provide same to the race Committee as evidence that they did, indeed, clear the mark. Email to lwiseshou@gmail.com or text to 713-419-4329.

10. AREAS THAT ARE OBSTRUCTIONS

10.1 Any commercial traffic encountered while transiting the Galveston Channel shall be treated as an obstruction. At no time does a vessel racing have right of way over commercial traffic. Any disruption of commercial traffic may be subject to disqualification without a hearing. This changes RRS 60.1 & 60.2.

11. THE START

11.1 Races will be started using RRS 26.

11.2 The Starting Line is a line between Galveston Inner Bar Channel Green Marker #11 (G11) and an orange flag located on the southern shoreline, approximately 1,100 yards distance, and at a bearing of approximately 205 degrees (Magnetic) from Galveston Inner Bar Channel Green Marker #11 (G11). CAUTION: Boats are advised to stay well clear of the shoreline to avoid shoal water!

11.3 Boats whose warning signal has not been made shall avoid the starting area during the starting sequence for other races. [DP]

11.4 A boat that does not start within 60 minutes after her starting signal will be scored Did Not Start without a hearing. This changes RRS A5.

12. THE FINISH

12.1 The finishing line will be a line between Galveston Channel Green Marker #11 and a virtual mark located at the shoreline at a bearing of approximately 205 degrees (Magnetic) from Galveston Inner Bar Channel Green Marker #11 at coordinates N29°20.044', W94°44.750. **Caution: Boats are advised to stay well clear of the shoreline to avoid shoal water!**

12.2 Each boat shall take a photo of its exact GPS position at the time of finish and send this and the photo of its exact GPS position at the time of finishing, with the boat's name, via email and/or text message to the Race Committee as soon as reasonably possible after finishing. She shall record her finish time as follows: Finish time shall be marked when Galveston Channel Marker Green Marker #11 is at a compass bearing of 025 degrees (Magnetic) from the vessel's helm. GPS time shall be used. She shall report her finishing time and her position in relation to any nearby boats, if known, and to the race committee at the first reasonable opportunity. This may be done by contacting the Race Committee no later than the race time limit. The information will be transmitted by email (lwisehou@gmail.com) or by text or voice recording to (713) 419-4329.

13. PENALTY SYSTEM

13.1 For the PHRF spinnaker and/or PHRF non-spinnaker class, RRS 44.1 is changed so that the One - Turn Penalty replaces the Two-Turns Penalty.

13.2 A boat that takes any penalty under RRS 44.2 shall notify the Race Committee at the first reasonable opportunity after finishing, identifying the location, time, and name of any other boat involved in the incident. Racers are reminded of rule 44.1.b.

13.3 Appendix V2 shall apply. A boat taking a post-race penalty shall deliver a statement via text message to 713-419-4329 and/or via email to lwisehou@gmail.com no later than the protest time limit.

14. TIME LIMITS AND TARGET TIMES

14.1 Time limit is as follows: Time Limit Expired – 0900 hours Central Daylight Time, September 1

14.2 Boats failing to finish within the time limit will be scored Did Not Finish without a hearing. This changes RRS 35 and A5.

15. PROTESTS AND REQUESTS FOR REDRESS

15.1 Boats intending to file a protest shall inform the race committee within 10 minutes of that boat's finishing time or as early as reasonably practicable by email (lwisehou@gmail.com) or by text to (713) 419-4329.

15.2 Blank protest forms are available on the US Sailing Racing Rules app or at https://www.ussailing.org/wp-content/uploads/2022/01/US_Sailing_Hearing_Request_Form_20210301_Fillable.pdf. Submit form electronically or send a picture of the form by email (lwisehou@gmail.com)

or by text to (713) 419-4329. Time stamp on this transmission must meet the protest time limit.

- 15.3 The protest time limit is 120 minutes after the last boat finishes or September 1, 2024, 1100 whichever is earlier.
- 15.4 Notices of scheduled hearing times and locations will be posted by 09:00 Sunday September 1, 2024 or within thirty (30) minutes of the expiration of the protest time limit, whichever is later, to inform competitors of hearings in which they are parties or named as witnesses.
- 15.5 Notices of protests by the race committee or protest committee will be posted to inform boats under RRS 61.1(b).
- 15.6 Protest hearings may be held virtually with system / link to be provided by the protest committee or in-person at Lakewood Yacht Club. Protests hearings will be held as soon as practicable for all participants including the Protest Committee.

16. SCORING

- 16.1 A boat's regatta score is the total of her race scores without exclusion. This changes RRS A2.1.
- 16.2 Boats in ORC Class will be scored using time-on-time (TOT) scoring.
- 16.3 The ORC TOT scoring option will be selected by the race committee after the race, based on actual weather data collected at nearby, publicly available anemometer station(s). The factor will be either the Triple Number Windward/Leeward (low/medium/high) or the Triple Number All Purpose (low/medium/high). This supersedes the NOR.
- 16.4 The decision regarding the ORC parameter selected is not subject to a request for redress. This changes RRS 62.1(a).
- 16.5 Other boats will be scored using time-on-distance (TOD) scoring.

17. SAFETY REGULATIONS

- 17.1 Check In – Boats shall check in with the Race Committee on VHF Channel 72 after 1200 on the day the race begins and prior to the first warning signal. Boats checking in shall report the number of individuals aboard. [DP] [NP]
- 17.2 A boat retiring from the race shall notify the Race Committee at the earliest opportunity, **and then again** when passing the finish line on returning to port. In both cases, retiring boats shall first attempt to notify the Race Committee via VHF Channel 72. Failing that, a retiring boat shall attempt to notify a competitor on the course for subsequent relay to the Race Committee. A retiring offshore boat shall also notify the Race Committee at cell number (713) 419-4329 no later than September 1, 2024 at 0900 hours. [DP]
- 17.3 If a skipper determines that it is necessary to use the boat's motor to maneuver, in order to avoid interfering with a ship's safe passage or avoid collision or grounding, he or she may do so. However, when motoring, the boat may not advance position, and may only use the motoring for clearing the ship passage lane. Once cleared, the boat shall

immediately cease motoring. This changes RRS 42. As soon as practical, the skipper shall advise the Race Committee of any action taken in accordance with this rule.

17.4 Interfering With Commercial Traffic: A boat is subject to immediate disqualification, without a hearing, if the Race Committee receives a report from a disinterested party that the boat interfered with commercial traffic while transiting to the race area, while *racing*, or while transiting to her mooring after *finishing*. This modifies 63.1.

18. REPLACEMENT OF CREW OR EQUIPMENT

18.1 Crew changes must be communicated to the Race Committee before the start. [DP]

18.2 All new crew must have submitted the required waiver of liability.

18.3 Boats which have not submitted a waiver of liability for each crew member will be considered as not entered into the regatta and will not be scored.

19. EVENT ADVERTISING

19.1 Competitor advertising will be restricted as follows: As a courtesy to our valued race sponsors, no advertising may be displayed on Lakewood Yacht Club premises without prior written permission of the Race Committee. [DP]

20. TRASH DISPOSAL

20.1 Trash shall be disposed of in accordance with applicable laws.

21. RADIO COMMUNICATION

21.1 The Race Committee will use VHF Channel 72 to communicate with racers, including the starting sequence. Except when communicating with the Race Committee on VHF Channel 72 as provided for in these Sailing Instructions, all boats should monitor VHF Channel 16 and in addition, when in or near the Houston Ship Channel, VHF Channel 13.

22. PRIZES

22.1 Prizes, will be given as follows:

22.1.1 One trophy: classes with three boats.

22.1.2 Two trophies: classes with four or five boats

22.1.3 Three trophies: classes with six to eight boats

22.2 The name of overall class winner in the ORC Spinnaker class will be engraved on the Old Winch Trophy.

22.3 The name of overall class winner in the PHRF non-spinnaker classes will be engraved on the Navigator Trophy.

22.4 The RC may award additional prizes at their discretion.

23. DISCLAIMER OF LIABILITY

Competitors participate in the regatta entirely at their own risk. See RRS 4, Decision to Race. The organizing authority will not accept any liability for material damage or personal injury or death sustained in conjunction with or prior to, during, or after the regatta.

24. INSURANCE

Each participating boat shall be insured with valid third-party liability insurance with a minimum cover of \$300,000 per incident or the equivalent.

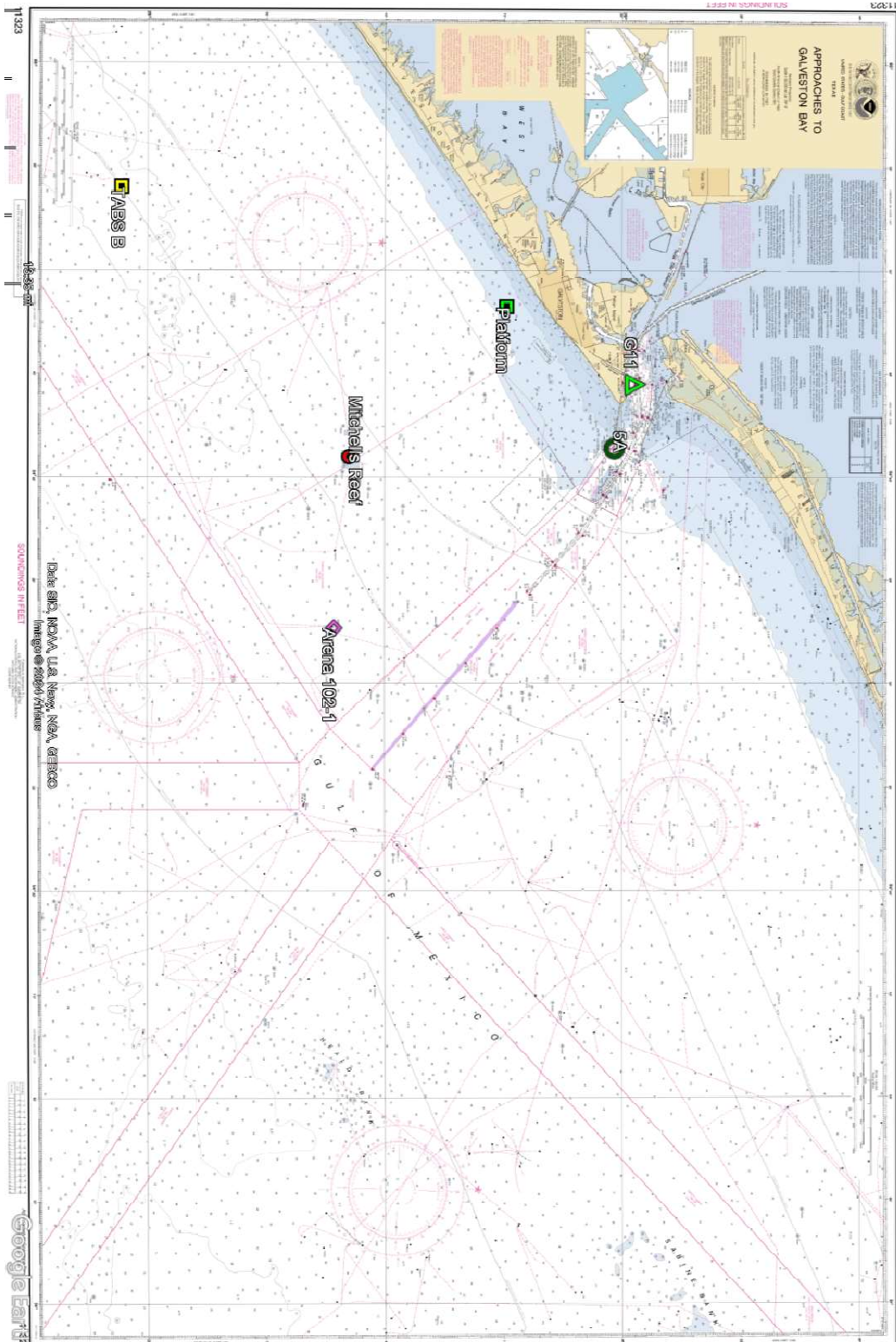
25. ATTACHMENTS

25.1 Attachment 1: Race Area

25.2 Attachment 2: Offshore Mark Locations & Courses

Attachment 1

Race Area (UPDATED)



Attachment 2

Offshore Mark Locations & Courses

Designation (Description)	Latitude	Longitude
G11 (G "11" Fl G 2.5s)	29° 20.530'N	94° 44.470'W
5A (Iso G 6s 30ft 6M "5A" Ra Ref)	29° 19.642'N	94° 41.275'W
Mitchells Reef (Platform "FR-TX-25" Fl Y 6s)	29° 8.540'N	94° 40.897'W
Arena 102-1 (Platform RACON – –)	29° 7.877'N	94° 32.679'W
TABS B (Weather Buoy Y "B" Fl Y 4s)	28° 58.938'N	94° 53.943'W
Platform	29°15.183' N	94°48.159'W
Virtual Finish Mark	29° 20.044'N	94° 44.750'W

Heald Bank Regatta
Course

"1 Red"



Sailing Instructions

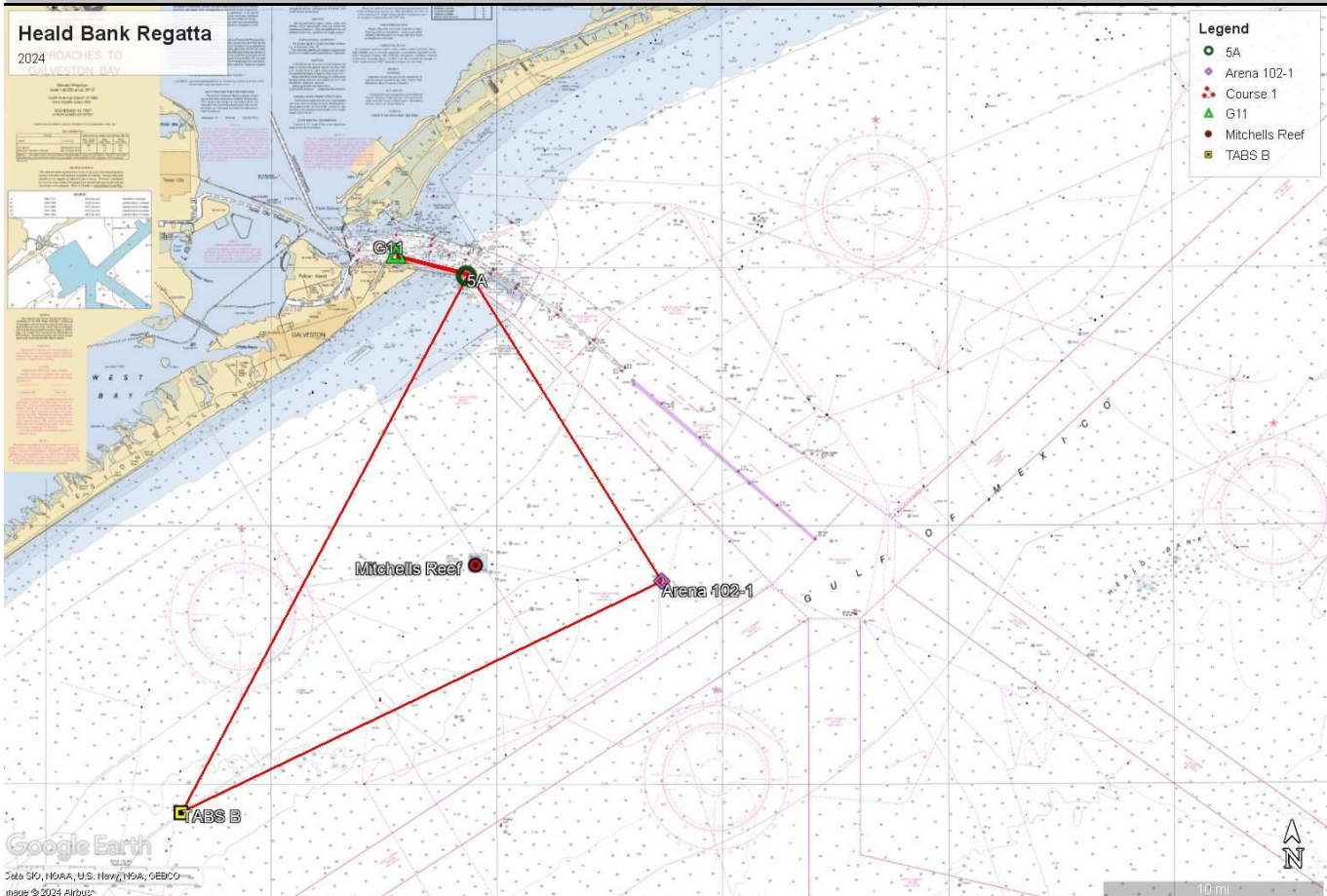
	Leave to:	Approx. Bearing (Mag.)	Leg Dist. (NM)	Accumulated Dist. (NM)
Start (G11)	Port			
5A	Starboard	106	2.86	2.86
TABS B	Port	206	23.43	26.29
Arena 102-1	Port	62	20.66	46.95
5A	Port	325	13.99	60.94
Finish (G11)	Starboard	286	2.86	63.80

Course

"1 Green"



	Leave to:	Approx. Bearing (Mag.)	Leg Dist. (NM)	Accumulated Dist. (NM)
Start (G11)	Port			
5A	Starboard	106	2.86	2.86
Arena 102-1	Starboard	145	13.99	16.85
TABS B	Starboard	242	20.66	37.51
5A	Port	26	23.43	60.94
Finish (G11)	Starboard	286	2.86	63.80



Heald Bank Regatta
Course

"2 Red"



Sailing Instructions

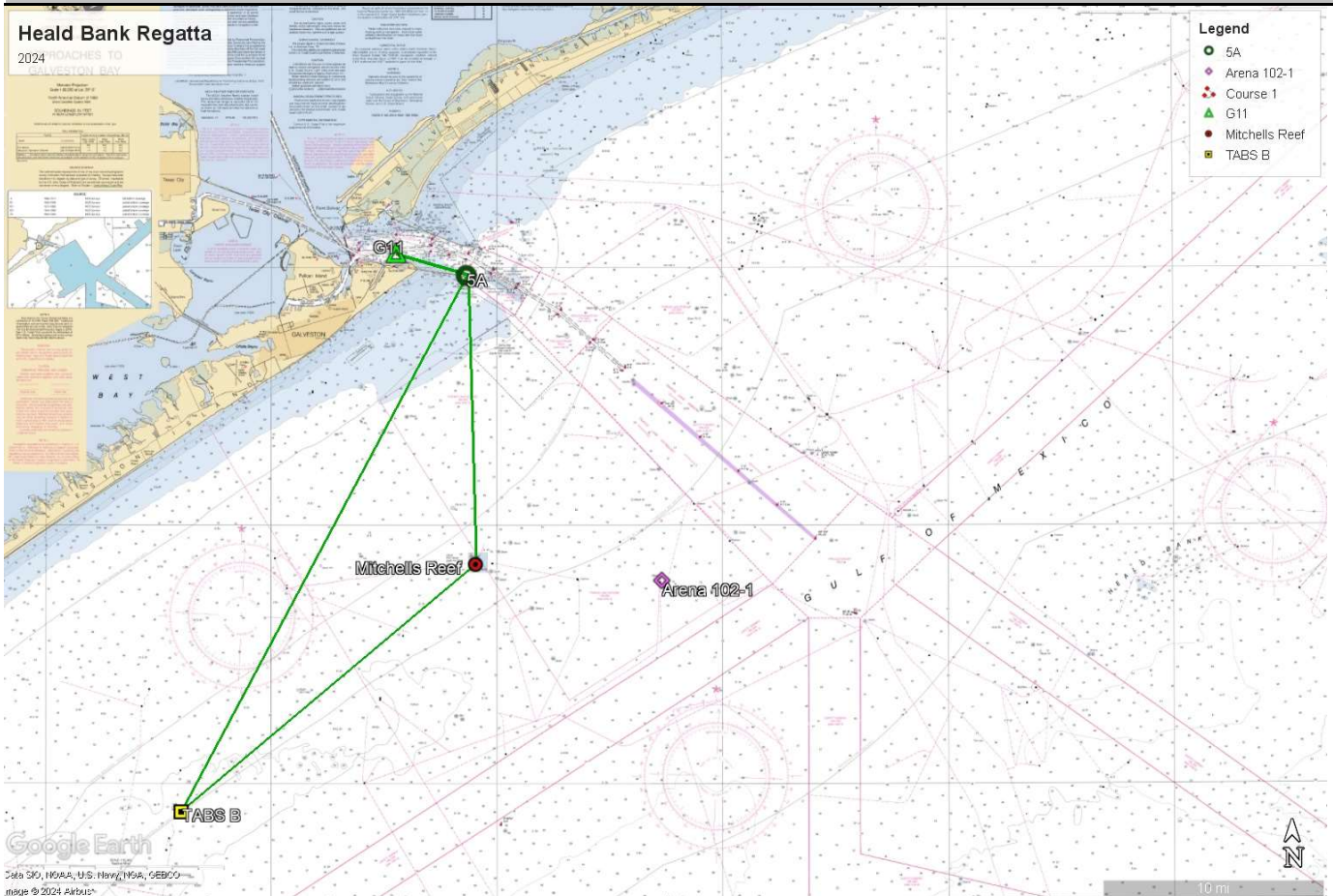
	Leave to:	Approx. Bearing (Mag.)	Leg Dist. (NM)	Accumulated Dist. (NM)
Start (G11)	Port			
5A	Starboard	106	2.86	2.86
TABS B	Port	206	23.43	26.29
Mitchells Reef	Port	48	14.91	41.2
5A	Port	356	11.10	52.3
Finish (G11)	Starboard	286	2.86	55.16

Course

"2 Green"

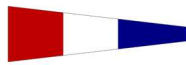


	Leave to:	Approx. Bearing (Mag.)	Leg Dist. (NM)	Accumulated Dist. (NM)
Start (G11)	Port			
5A	Starboard	106	2.86	2.86
Mitchells Reef	Starboard	176	11.10	13.96
TABS B	Starboard	228	14.91	28.87
5A	Port	26	23.43	52.30
Finish (G11)	Starboard	286	2.86	55.16



Heald Bank Regatta
Course

“3 Red”

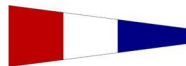


Sailing Instructions

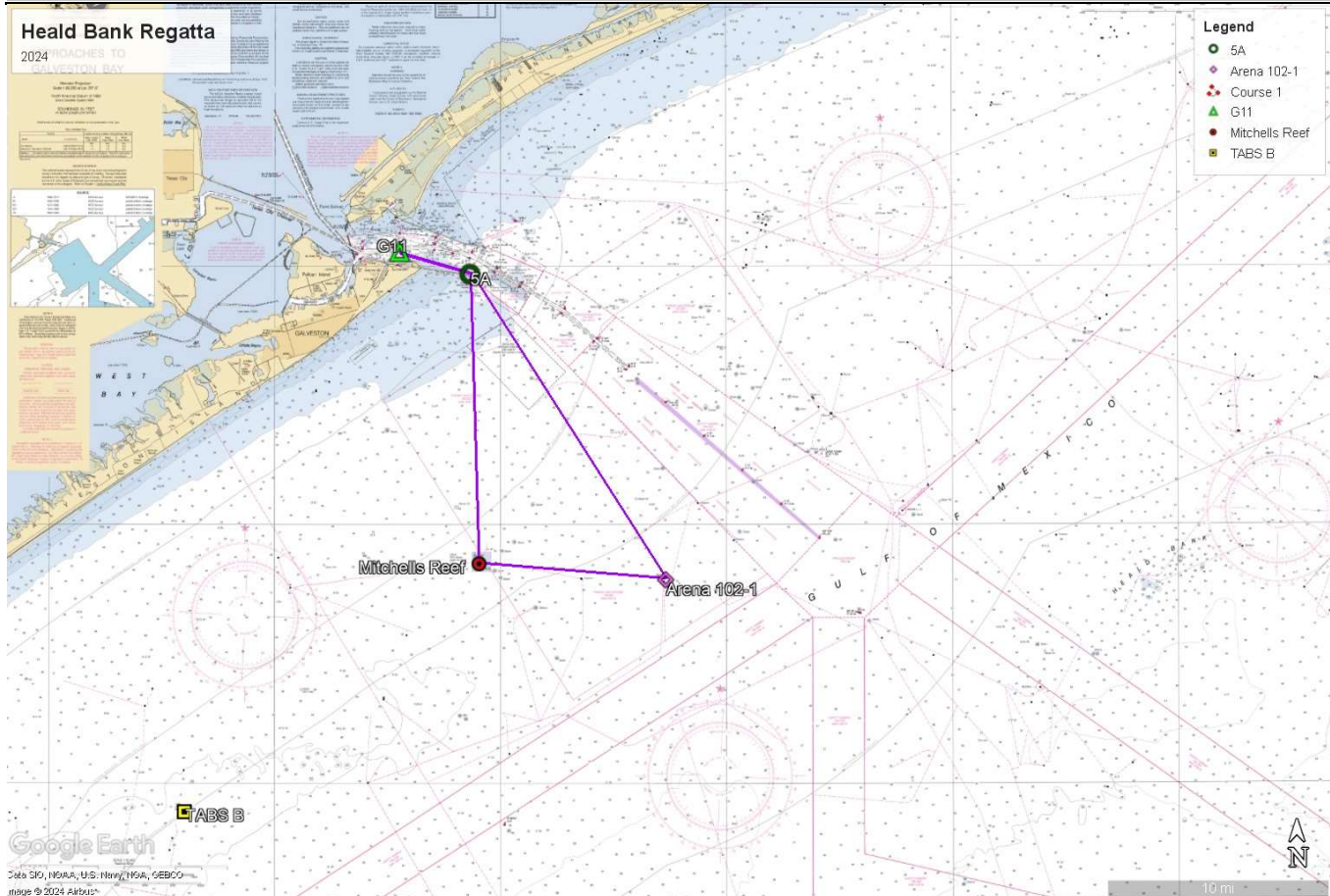
	Leave to:	Approx. Bearing (Mag.)	Leg Dist. (NM)	Accumulated Dist. (NM)
Start (G11)	Port			
5A	Starboard	106	2.86	2.86
Mitchells Reef	Port	176	11.10	13.96
Arena 102-1	Port	93	7.23	21.19
5A	Port	325	13.99	35.18
Finish (G11)	Starboard	286	2.86	38.04

Course

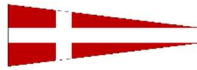
“3 Green”



	Leave to:	Approx. Bearing (Mag.)	Leg Dist. (NM)	Accumulated Dist. (NM)
Start (G11)	Port			
5A	Starboard	106	2.86	2.86
Arena 102-1	Starboard	145	13.99	16.85
Mitchells Reef	Starboard	273	7.23	24.08
5A	Port	356	11.10	35.18
Finish (G11)	Starboard	286	2.86	38.04



Course "4 Red"



	Leave to:	Approx. Bearing (Mag.)	Leg Dist. (NM)	Accumulated Dist. (NM)
Start (G11)	Port			
5A	Starboard	106	2.86	2.86
Platform	Port	231	7.45	10.31
5A	Port	51	7.45	17.76
Finish (G11)	Starboard	286	2.86	20.62

