



2024 GBCA Women's Regatta

July 20, 2024

Organizing Authority: Galveston Bay Cruising Association  
Clear Lake Shores, TX USA

## SAILING INSTRUCTIONS

### 1 RULES

- 1.1 The event is governed by the *rules* as defined in *The Racing Rules of Sailing (2021-2024) (Rules,RRS)*.
- 1.2 The notation "[DP]" in a rule in these Sailing Instructions means that the penalty for a breach of a rule may, at the discretion of the protest committee, be less than disqualification.
- 1.3 These Sailing Instructions are to accompany the Notice of Race. In the event of a discrepancy between these SIs and the NOR, these SIs shall prevail.

### 2 CHANGES TO SAILING INSTRUCTIONS

- 2.1 Any change to the sailing instructions will be posted before 08:00 on the day it will take effect, except that any change to the schedule of races will be posted by 20:00 on the day before it will take effect.

### 3 COMMUNICATIONS WITH COMPETITORS

- 3.1 Notices to competitors will be sent via email to respective skipper.
- 3.2 **[DP]All competitors shall check-in with Race Committee (713-591-8115) via text message prior to their start. Please include vessel name and class racing.**
- 3.3 [DP] While racing, except in an emergency, a boat shall not make voice or data transmissions and shall not receive voice or data communication that is not available to all boats.
- 3.4 The use of a tracking program (like RaceQs or Yellowbrick) may be used for post-race evaluation only.

### 4 CODE OF CONDUCT

- 4.1 [DP] Competitors and support persons shall comply with reasonable requests from race officials.
- 4.2 [DP] Competitors and support persons shall handle any equipment provided by the

organizing authority with care, seamanship, in accordance with any instructions for its use and without interfering with its functionality.

## 5 SIGNALS MADE ASHORE

- 5.1 Signals made ashore will be displayed via email to the individual skippers;
- 5.2 In the event of signals made ashore, the Race Committee **may** also notify participants via SMS text message to the number provided at registration.

## 6 SCHEDULE OF RACES

### 6.1 Schedule

Date	Time	Event
Saturday, July 20 <sup>th</sup>	13:00	Scheduled Start – PHRF Spinnaker Class
Saturday, July 20 <sup>th</sup>	13:05	Scheduled Start – Cruising Club Spin Class
Saturday, July 27 <sup>th</sup>	19:00 est.	Awards presentation and drinks at Rum Race #4 social.

## 7 CLASSES

### 7.1 The classes are as follows:

- **PHRF Spinnaker**
- **Cruising Club Spin**

## 8 RACING AREA

### 8.1 SI Addendum #1 shows the location of the racing area.

## 9 COURSES

### 9.1 The diagram in SI Addendum #2 shows the course, including the approximate bearings, the order in which marks are to be passed, approximate distance, and the side on which each mark is to be left.

## 10 MARKS

### 10.1 The following fixed marks may be used:

- The Start/Finish line will be between Clear Lake Entrance Marker #1 and Marker # 2, located in Galveston Bay.
- Clear Lake Entrance Marker #2 - N 29 33.164' W 094o 59.551'
- GBCA "E" mark: Houston Ship Channel low range mark - N 29o 35.787' W 094o 56.935'
- GBCA "F" mark: Houston Ship Channel high range mark - N 29o 34.671' W 094o 56.518'
- GBCA "H" mark: a platform located at approximately - N 29o 33.225' W 094o 56.542'

- SBC #8 mark: a channel marker at approximately - N 29o 32.417' W 094o 55.080'

10.2 In the event a mark is not on station, a boat shall round the appropriate GPS coordinates

## 11 OBSTRUCTIONS

11.1 **BOATS SHALL NOT ENTER THE HOUSTON SHIP CHANNEL. THE HOUSTON SHIP CHANNEL SHALL RANK AS AN OBSTRUCTION. BOATS THAT ENTER THE HOUSTON SHIP CHANNEL SHALL BE DISQUALIFIED WITH FUTURE PARTICIPATION PLACED UNDER REVIEW BY GBCA BOARD.**

## 12 THE START

12.1 The race will use an autonomous start with no Race Committee on station, there will be no starting sequence. This changes RRS 26.

- **PHRF Spinnaker class will start at 13:00 pm GPS time.**
- **Cruising Class will start at 13:05 pm GPS time.**

12.2 The starting line will be a virtual line between Clear Lake Entrance Marker #1 and #2

## 13 THE FINISH

13.1 The finish line will be a virtual line between Clear Lake Entrance Marker #1 and #2

13.2 All boats will be responsible for capturing their own finish time. Race committee will not be on station. Report results at: **[racing.gbca.org](http://racing.gbca.org)** using 24hr/military time format.

13.3 It is recommended each competitor take a photo of their GPS showing finish location and GPS time. If there is any controversy around finishing times, the Race Committee will request photo documentation.

## 14 PENALTY SYSTEM

14.1 The first two sentences of RRS 44.1 are changed to:

A boat may take a One-Turn Penalty when she may have broken one or more rules of Part 2 or Rule 31 in an incident while racing. However, when she may have broken one or more rules of Part 2 while in the zone around a mark other than a starting mark, her penalty shall be a Two-Turns Penalty.

14.2 Alternatively, a boat may accept a Scoring Penalty as described in RRS 44.3. The Scoring Penalty shall be 20% of the boats entered unless the incident occurred within the zone of any mark, in which case the scoring penalty shall be 40% of the boats entered.

## 15 HEARING REQUESTS

15.1 The protest time limit is one hour after the protesting boat is *Finished*.

15.2 Any boats planning on filing a hearing request shall notify the Race Committee via cell

phone (text or call) prior to leaving the finish area. Please include name of boat protesting and name of boat being protested.

- 15.3 Paper hearing request forms are available from the GBCA clubhouse, however electronic filings using the US Sailing app are preferred by the protest committee. Please forward all filings to [may.chris.w@gmail.com](mailto:may.chris.w@gmail.com).
- 15.5 Notices of protests by the race committee, or protest committee will be posted to inform boats under RRS 61.1(b).
- 15.6 Breaches of Sailing Instructions 3.2, 3.3, 16.3, and 18 will not be grounds for a protest or request for redress by a boat. This changes RRS 60.1(a)
- 15.7 RRS 62.2(a) and 66.2(a) do not apply.
- 15.8 The US Sailing prescription to RRS 63.2 does not apply.

## **16 SCORING**

- 16.1 One race is required to be completed to constitute a regatta.
- 16.2 A boat's regatta score is the total of her race scores without exclusion. This changes RRS A2.1.
- 16.4 PHRF and Cruising Club Handicap classes will be scored using Time on Time with the following conversion formula:  $TCF=650/(550+x)$ , where x equals PHRF or Cruising Club Handicap.

## **17 SAFETY REGULATIONS**

- 17.1 [DP]All competitors shall check-in with Race Committee (713-591-8115) via text message prior to their start. Please include vessel name and class racing.
- 17.2 All boats shall have an operative VHF/FM transceiver with Channels 9,16,13,68,71, and 72.
- 17.3 [DP] A boat that retires from a race shall notify the race committee at the first reasonable opportunity by cell phone (713-591-8115).
- 17.4 Contacts for Race Committee: Chris May 713-591-8115

## **18 TRASH DISPOSAL**

- 18.1 Trash shall be properly disposed of when a vessel returns to shore.

## **19 PRIZES**

- 19.1 Prizes will be given for 1<sup>st</sup> through 3<sup>rd</sup> places in each class based on number of entries as follows:
  - 3 entries – 1<sup>st</sup> Place
  - 6 entries – 1<sup>st</sup>, 2<sup>nd</sup> Place
- 19.2 The GBCA Women's Regatta is one of five events of the **Galveston Bay Women's**

**Championship Series.** Those competitors that compete in the PHRF Spinnaker class shall be eligible to have points counted towards the overall series Perpetual trophy.

## **20 RISK STATEMENT**

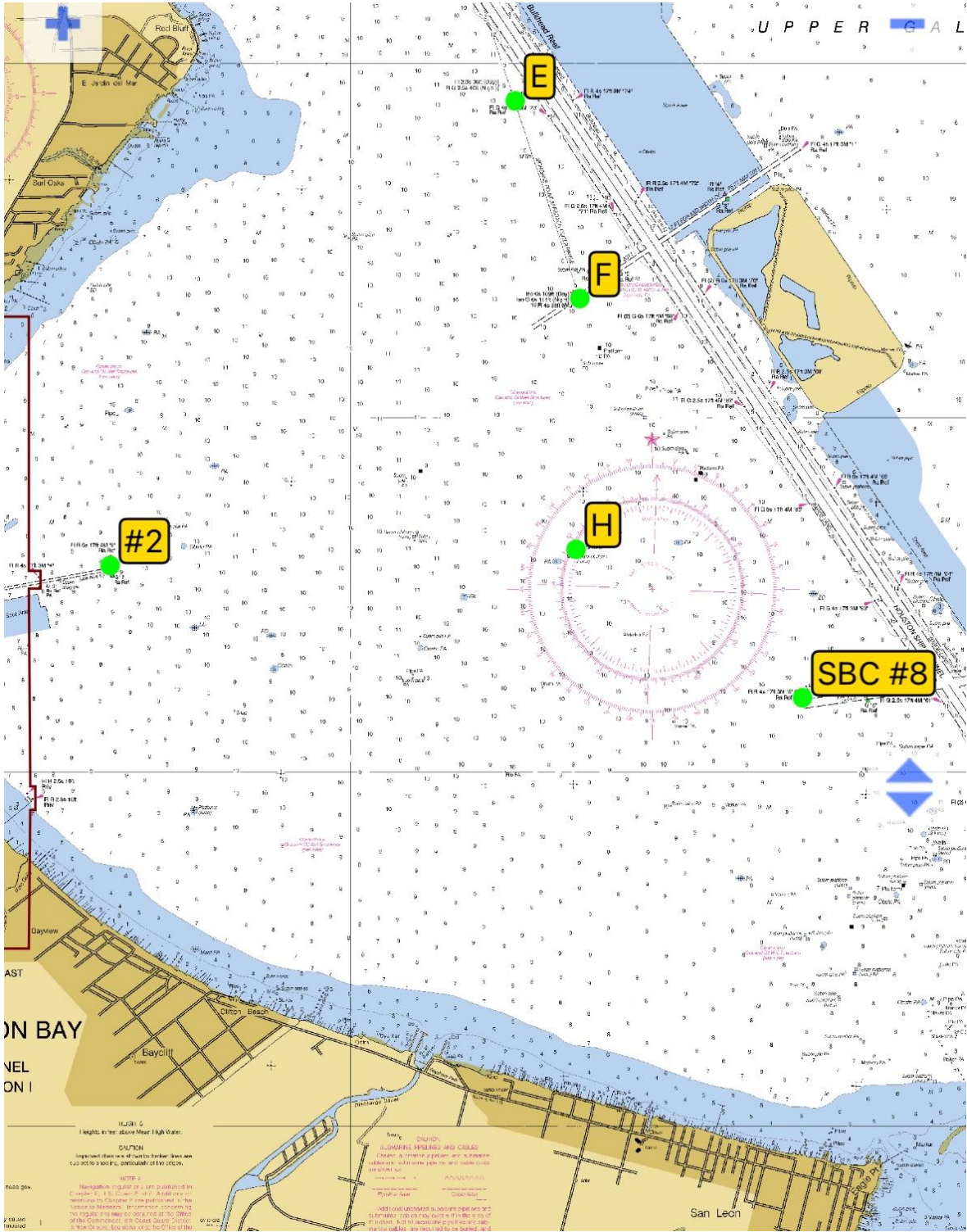
- 20.1 RRS 3 states: 'The responsibility for a boat's decision to participate in a race or to continue to race is hers alone.' By participating in this event each competitor agrees and acknowledges that sailing is a potentially dangerous activity with inherent risks. These risks include strong winds and rough seas, sudden changes in weather, failure of equipment, boat handling errors, poor seamanship by other boats, loss of balance on an unstable platform and fatigue resulting in increased risk of injury. **Inherent in the sport of sailing is the risk of permanent, catastrophic injury or death by drowning, trauma, hypothermia or other causes.**

## **21 INSURANCE**

- 21.1 Each participating boat shall be insured with valid third-party liability insurance with a minimum cover of \$300,000 per incident or the equivalent.

# SI ADDENDUM #1

## Race Area



## SI Addendum #2 Course

### Course – All Classes

<b>Mark</b>	<b>Est. Bearing</b>	<b>Distance</b>	<b>Leave Mark to:</b>
Start/Finish			
GBCA "H"	088	2.62nm	Port
GBCA "E"	352	2.55nm	Port
SBC #8	154	3.74nm	Port
GBCA "F"	331	2.58nm	Port
Start/Finish			
	<b>Total Dist</b>	<b>14.53nm</b>	

