

# Sailing Instructions

Around Oak Island Regatta  
Saturday, October 12, 2024

## Rules

The regatta will be governed by the rules as defined in The Racing Rules of Sailing.

### 1. Entries

Competitors may enter by delivering a completed entry form on line ( <https://www.regattanetwork.com/event/28422> )and paying the entry fee to the Cape Fear Yacht Club during registration on Friday October 11 or Saturday Morning October 12 from 7:00 AM to 9:00 AM at the Cape Fear Yacht Club.

### 2. Notices to Competitors

Notices to competitors will be posted on the official notice board located at the CFYC Clubhouse outside the bar.

All racers are requested to carry a cell phone or a VHF Radio (monitor Channel 78).

RaceQs will be used to track racers. Please start your track and set live streaming to "on".

Racer's positions will be tracked using RaceQs. The application is free to all at [RaceQs.com](https://RaceQs.com).

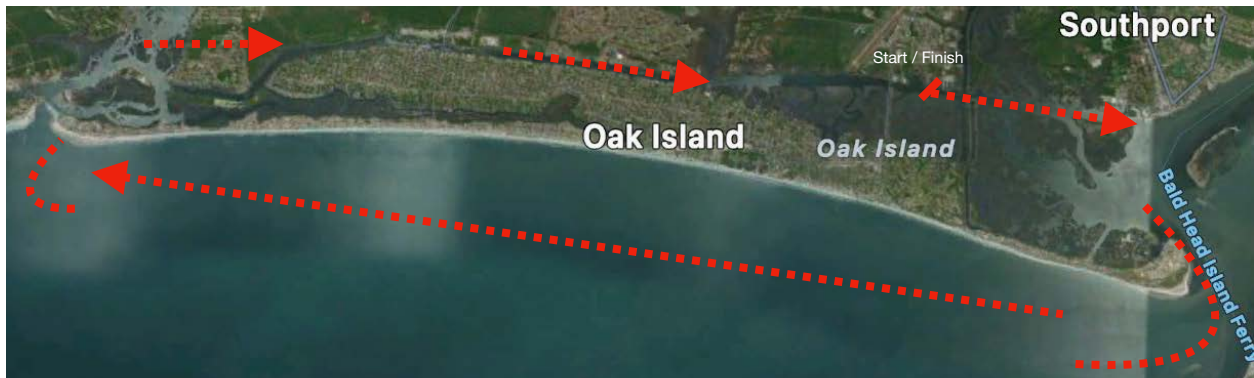
### 3. Signals Made Ashore

Signals made ashore will be displayed from the flagpole located at the Safe Harbor deckhouse on the Fuel Dock at the Marina. If a postponement is signaled ashore, the

warning signal will be made not less than 5 minutes after flag AP is lowered.

4. **Schedule and Class Flags.** A competitors' meeting will be held at Dutchman's Creek Park at 8:00 AM. The warning signal for the Sunfish Race will be at 9:30 AM. The class flag for Sunfish will be displayed at the west end of the Safe Harbor fuel dock.

5. **Racing Area.**



The Race is around Oak Island.

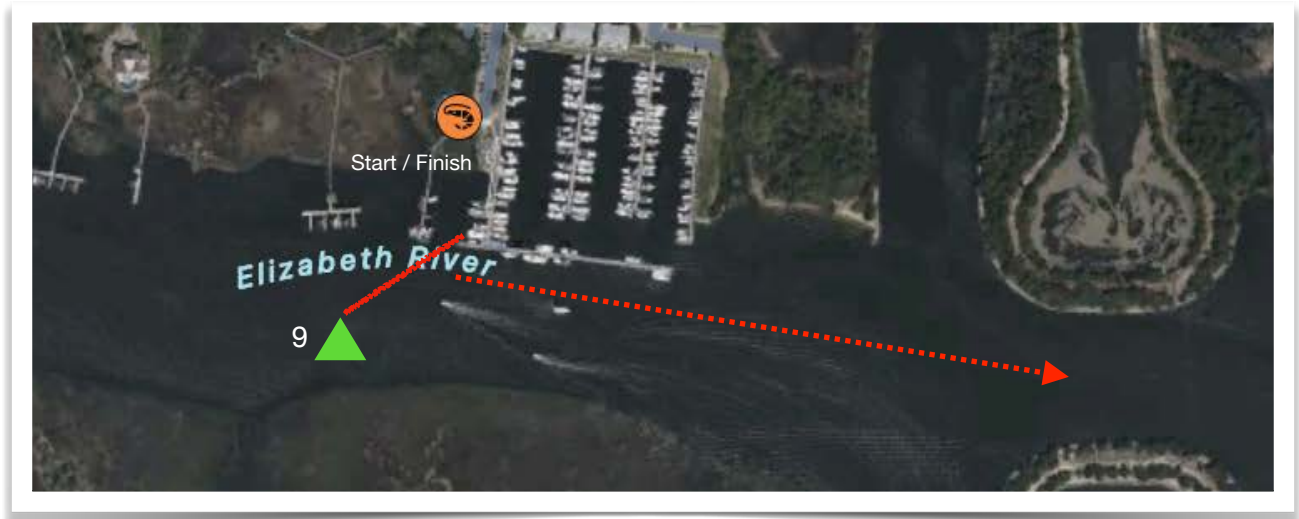
6. **Courses and Marks.**

**Starting and Finishing Lines**

The Sound Signal Starting System in Appendix S of the racing rules will be used.

The Sunfish will start in the Intra-Coastal Waterway

(ICW) in front of the Safe Harbor Dock House.



The race starts and ends at the fuel dock.

From the starting line, racers will proceed eastward (toward Southport), round Oak Island at Caswell Beach, entering the ocean, sail to Lockwood Folly Inlet, entering the Intra-Coastal Waterway (ICW) at Lockwood Folly Inlet and proceed east on the ICW to the finish line.



## 7. Time Limit

The time limit for each race will be 8 hours for the first boat to finish. Boats on the water at 5:30 PM will be finished in place and scored as to their place.

## 8. Protests

This is a fun race - Follow the first rule of Sailing - AVOID ALL COLLISIONS. There will be no protest heard.

## 9. Scoring

Scoring will be using Low Point Scoring Low-point system is

a point system in the Racing Rules of Sailing. The first boat to cross the finish line gets one point, the second two points.

## 10.Awards

Trophies will be awarded for each class.