

# NEW ENGLAND MASTERS CHAMPIONSHIP

Sponsored by

**Team One Newport Embroidery**

September 14 & 15, 2024

Cold Spring Beach

North Kingstown, RI 02852

## SAILING INSTRUCTIONS

*Wickford Yacht Club is the Organizing Authority*

1. **Rules:** The regatta will be governed by the rules as defined in the Racing Rules of Sailing and the class rules of ILCA.
2. **Notices to Competitors:** Notices to competitors will be posted on the official notice board located near the race office tent. There will be a temporary notice board at Wickford Yacht Club during the dinner on Saturday night.
3. **Entry Fee:** Registration opens July 8th and closes 9 AM CST September 14. Until noon CST August 24th, 2024 the entry fee is \$75. A \$10 late fee will apply to all entries after that time. Fee includes snack bars, coffee, juice, and water at the beach on both days, bottled water on the course, and pizza at the beach on Sunday prior to awards. **Sailors with paid registration for the New England Masters prior to noon CST August 24th, 2024, and who compete in the event, will receive a rebate of \$20 if they are also paid registrants for the 2024 US Masters event.** Rebate will be provided by September 20th.  

Sailors registered for this regatta OR the US Masters regatta, and their guests are encouraged to attend the Endless Beer, Wine Bar and BBQ dinner at the Wickford Yacht Club on Saturday after racing. Tickets for competitors and guests can be purchased at the time of registration for an additional fee of \$45 per ticket. Tickets purchased after August 24<sup>th</sup> are \$55 each. Meal tickets may not be available after September 7<sup>th</sup>. Meal tickets are available without registration at the Event Storefront.
4. **Signals Made Ashore**
  - 4.1 Signals made ashore will be made orally from the vicinity of the race office tent. All official announcements will be posted on the official notice board. This changes RRS 90.2.(c).
5. **Eligibility and Entry:**
  - 5.1 All entrants must be current ILCA Class members.
  - 5.2 Competitors may alternate between ILCA 6, ILCA 7, and ILCA 4.7 rig throughout the regatta, as long as the sail number remains the same.
  - 5.3 Only Class legal sails may be used.
6. **Event Schedule**

<b>Saturday September 14</b>	
0900 – 1000	Check in and late registration
1030	Skipper's meeting in the vicinity of the race office tent
1200	Warning signal for first race. Subsequent races to follow immediately
1600	No warning signal after this time
<b>Sunday September 15</b>	
1100	Earliest possible start time. Subsequent races to follow immediately
1500	No warning signal after this time
7. **Class Flag:** The class flag is a white flag with red Laser logo.
8. **Racing Area:** See Appendix A. The Alpha course will be used.
9. **Courses and Marks**
  - 9.1 See Appendix B for course diagrams and descriptions.
  - 9.2 All marks will be 4' red/orange APS cylinders.

**10. Start**

- 10.1 Races will be started by using RRS 26.
- 10.2 The starting line will be between a staff displaying orange flag on the signal boat and a 2' bright orange buoy on the port end of the starting line or an orange flag on the port end boat.

**11. Change of the Next Leg of the Course:** The distance and direction to the next mark up to a maximum of 10 degrees may be changed without any signal. The new mark shall be in place before any boat begins the leg. This changes **RRS 33**. Subsequent legs may be changed to maintain the course shape.

**12. Finish:** The finish shall be between an orange flag on the starboard side of the signal boat and a 32" yellow APS buoy.

**13. Penalty System:** The first sentence of rule 44.1 is altered so that "One-Turn Penalty" replaces "Two-Turns Penalty".

**14. Time Limit and Target Times**

Time limits and target times for the first boat are as follows:

<i><b>Time limit</b></i>	<i><b>Target time</b></i>	<i><b>Time-limit after the first finisher</b></i>
80 minutes	40 minutes	15 minutes

**15. Protests**

15.1 Protest forms are available on the notice board. Protests and requests for redress shall be delivered within the appropriate time limit to the Fleet Captain, who will be in the vicinity of the notice board.

15.2 The protest time limit is 60 minutes after the last boat has finished the last race of the day in its course area and will be posted on the official notice board.

15.3 Competitors are reminded that this is a "gentlemen's and ladies' regatta" and that protests should be avoided at all costs.

**16. Scoring:**

16.1 The Low Point Scoring System, Appendix A of the racing rules will apply. There will be one throw-out if 5 or more races have been completed.

16.2 Eight races are scheduled, of which one shall be completed to constitute a series.

16.3 No more than 4 races will be sailed in one day.

16.4 In addition, the North American Masters Age Handicap system will be used to determine the overall winner as follows: Legends (75+) add 0 points per race, GGM (65 – 74) add 1 point per race, GM (55-64) add 2 point per race, M (45-54) add 3 points per race, and APP (30- 44) add 4 points per race to their score. There will be one discard after 5 completed races.

16.5 The age of the competitor on the first day of the Regatta determines the age division in which the competitor will be placed for applying the Laser Master Handicap Points.

16.6 Ties will be broken as follows:

- a) within age divisions: according to RRS A8 and
- b) across age divisions: in favor of the sailor from the older division

**17. Safety:** Each competitor will be responsible for wearing an USCG approved PFD at all times on the water. This changes RRS 40.

**18. Prizes:**

18.1 One overall prize will be awarded for the New England Masters champion determined by the NA age handicap system

18.2 Divisional prizes will be awarded for the top 3 in each age division

18.3 One prize will be awarded for the top female finisher

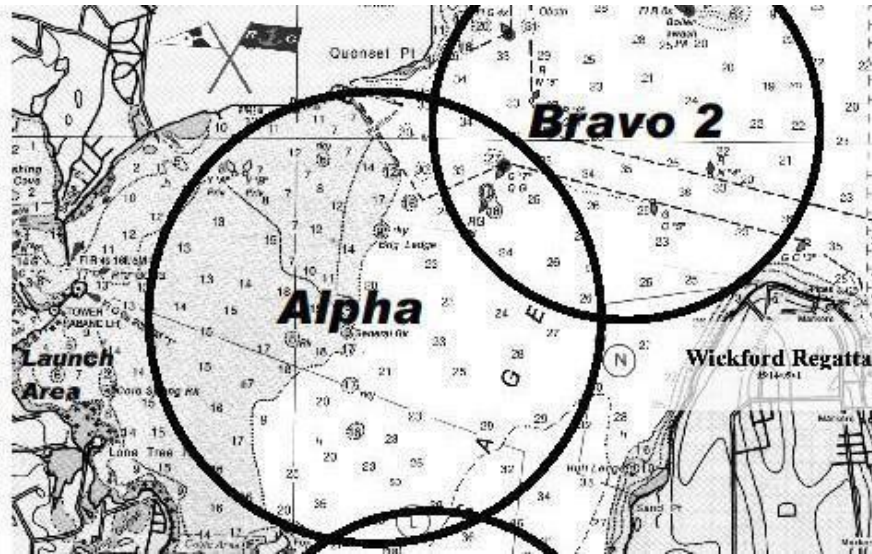
18.4 One prize will be awarded for the top Legend finisher

18.5 Divisional finishing positions will be extracted from the overall results without re-scoring.

**19. Disclaimer of Liability:** Competitors participate in the regatta entirely at their own risk. See rule RRS 4, Decision to Race. The organizing authority will not accept any liability for material damage or personal injury or death sustained in conjunction with or prior to, during, or after the regatta.

# Appendix A

## Course Areas



Tide Times and Heights	Hi	Low	Hi	Low
Saturday 14 <sup>th</sup>	5:21 AM 3.4'	10:38 AM 0.4'	5:47 PM 4.1'	11:29 PM 0.4'
Sunday 15 <sup>th</sup>	6:14 3.8'	11:42 AM 0.2'	6:38 PM 4.3'	- -

## Appendix B – Course Diagrams

W1= Start, 1,2G,Finish  
 W2 = Start, 1, 2G, 1, 2G, Finish

•  
1



• 2G •