



## Multihull Invitational Regatta

### Sailing Instructions

September 21 & 22, 2024

#### Organizing Authority: Richmond Yacht Club

#### 1. RULES

- 1.1. This regatta will be governed by the rules as defined in the 2021-2024 Racing Rules of Sailing (RRS).
- 1.2. RRS 40.1 will be deleted and replaced with: “Competitors shall wear personal flotation devices, except briefly while changing clothing or personal equipment.” Note that Flag Y will not be displayed. This changes RRS 40.2.
- 1.3. To accommodate the conditions and water temperatures commonly encountered on San Francisco Bay wetsuits or dry suits are mandatory while racing. It is strongly recommended that competitors carry a minimum of 20’ tow line and a VHF radio.

#### 2. NOTICES TO COMPETITORS

- 2.1. Notices to competitors will be posted on the official notice board at Richmond Yacht Club (RYC).
- 2.2. Competitors’ meeting will be held at 10:00 on September 21 on the RYC lower deck.

#### 3. CHANGES TO SAILING INSTRUCTIONS

- 3.1. Any change to the sailing instructions will be posted on the official notice board before 0900 hours on the day it will take effect, except that any change to the schedule of races will be posted by 1900 hours on the day before it will take effect.
- 3.2. Oral changes to the Sailing Instructions may be made on the water in accordance with RRS 90.2. The Race Committee may hoist the “L” flag to indicate that it wants to hail changes to the sailing instructions. Changes to the sailing instructions hailed in this manner will not be grounds for requesting redress for any competitor failing to come within hail. This changes RRS 60.1(b).

#### 4. MEASUREMENT

Competitors are responsible for making sure their boat complies with the applicable Class Rules.


#### 5. SIGNALS MADE ASHORE

- 5.1. Signals made ashore will be displayed from the yardarm of the mast on the upper deck of the RYC clubhouse.
- 5.2. When flag AP is displayed ashore, ‘1 minute’ is replaced with ‘not less than 60 minutes,’ This changes RRS “Race Signals”.

## 6. SCHEDULE OF RACES

- 6.1. Saturday, September 21 – One long-distance race is planned if wind and weather are favorable; otherwise, there will be multiple buoy races.
- 6.2. Sunday, September 22 - Multiple buoy races are planned.
- 6.3. The scheduled time of the warning signal for the first race on Saturday is 1155 hours. On Sunday, the scheduled time for the first warning is 1055 hours.
- 6.4. Races can be started in any order. After the first race each day, the warning signal for each succeeding race will be made as soon as practicable. To alert boats that another race will begin soon, a series of short sound signals may be made.
- 6.5. No warning signal will be made after 1500 hours on Sunday.
- 6.6. The display of Flag “H” (one white and one red vertical bar) at the finish of any race means, “Racing has ended for the day.”

## 7. CLASS FLAGS

Class	Class Flag
F18	Pink F18 Flag
Hobie 20	Blue Hobie Flag
Open	Code Flag O 

## 8. RACING AREAS

- 8.1. The buoy races will take place either in the area known as the Berkeley Circle or the area known as Southampton Shoal. The course area can be changed by the Race Committee on the water by displaying code flag L and moving to a new location.
- 8.2. The long-distance race starting area will be in the area known as South Hampton Shoal.

## **9. COURSES**

The diagrams below show the courses including the order in which marks are to be passed and the side on which each mark is to be left. Courses will be designated by a numeral pennant displayed on the Committee Boat.

## **10. MARKS**

All marks for the buoy races will be red or yellow inflatable marks or balls.

## **11. THE START**

- 11.1. The start will be in accordance with RRS 26. Standard five-minute sequence. The warning signal for each succeeding class will be made with or after the starting signal of the preceding class.
- 11.2. The starting line for the long-distance race will be between a staff displaying an orange flag on the Committee Boat and an orange tetrahedral mark.
- 11.3. The starting line for the buoy races will be between a staff displaying an orange flag on the Race Committee signal boat and a mark at the port end of the line.
- 11.4. Boats whose warning signal has not been made shall avoid the starting area during the starting sequence for other races.
- 11.5. The Race Committee may attempt to hail boats that are OCS via VHF radio, but the failure to do so, or the failure of a boat to hear a hail, will not constitute grounds for redress. This changes RRS 60.1
- 11.6. A boat starting later than 4 minutes after her starting signal will be scored Did Not Start without a hearing. This changes RRS A4 and A5.

## **12. THE FINISH**

- 12.1. The finish line for the long-distance race will be between the green channel buoy (G 77" Fl G 4s) just outside of the RYC harbor and the race deck on the RYC harbor sea wall.
- 12.2. The finish line for the buoy races will be between a staff displaying a blue flag on the Race Committee signal boat and the course side of a mark on the opposite side as the starting mark.

## **13. PENALTY SYSTEM**

RRS 44.1 is changed so that the Two-Turn Penalty is replaced by the One-Turn Penalty.

## **14. TIME LIMITS**

Boats failing to finish within 15 minutes after the first finisher in their class and not subsequently retiring, getting penalized, or given redress will be scored TLE (time limit expired). This changes RRS 35, A5.1, A5.2, and A10.

## **15. SCORING**

- 15.1. The low point scoring system, RSS A4, will be used with modifications as specified in RSS A5.3.
- 15.2. Multiple races are scheduled of which two (2) must be completed to constitute a series. 16.3. The Open Class will be scored using the International Small Catamaran Rating System (SCHRS).
- 15.3. When more than 4 races have been completed, a boat's series score will be the total of her race scores excluding her worst excludable score.

## **16. PROTESTS AND REQUESTS FOR REDRESS**

- 16.1. Protest forms will be located outside the downstairs Race Room. Protests shall be delivered to a Protest Committee representative within the protest time limit, which shall be 30 minutes after the race committee returns to the RYC club house each day.
- 16.2. Notices will be posted on the Official Notice Board within 30 minutes of the protest time limit to inform competitors of hearings in which they are parties.
- 16.3. Notices of protests by the Race Committee or Protest Committee will be posted to inform boats under RRS 61.1(b).

## **17. PRIZES**

A trophy award presentation will be held approximately 1 hour after the race committee returns to the RYC club house after the last race on Sunday. If the protest filings do not impact the awards, the award presentation may take place prior to the protest hearings.

## **18. SAFETY REGULATIONS**

- 18.1. Boats leaving the racing area prior to the conclusion of racing are requested to notify the Race Committee either in person or via VHF channel 69 before leaving the course area. If that is not possible, the competitor shall call the PRO, Becky Ashburn at 702-580-3230 immediately after arriving ashore.

## **19. RADIO COMMUNICATION**

A boat shall not make radio transmissions while racing or receive radio communications not intended for all boats. This restriction also applies to mobile telephones. The Race Committee will be using VHF channel 69 for race management. Competitors may "listen in;" however, communication TO the Race Committee should be limited to informing the Race Committee that you are retiring from a race or leaving the race area, or if you intend to submit either a protest or a request for redress.

## **20. PRIZES**

- 20.1. Prizes, the number of which will be based on the number of registered entries, will be awarded approximately 1 hour after the race committee returns to the RYC club house after the last race on Sunday, September 22, on the RYC Upper Deck.

20.2 Additional recognitions and/or awards may be presented at the discretion of the Organizing Authority.

## 21. RISK STATEMENT

RRS 3 states: 'The responsibility for a boat's decision to participate in a race or to continue to race is hers alone.' By participating in this event each competitor agrees and acknowledges that sailing is a potentially dangerous activity with inherent risks. These risks include strong winds and rough seas, sudden changes in weather, failure of equipment, boat handling errors, poor seamanship by other boats, loss of balance on an unstable platform and fatigue resulting in increased risk of injury. Inherent in the sport of sailing is the risk of permanent, catastrophic injury or death by drowning, trauma, hypothermia or other causes.

Regatta Chairs:

Gene Harris: 510-612-2036, [gene@pedrick.org](mailto:gene@pedrick.org)  
Rolf Jaeger: 510-300-7462, [rolf@pacificsound.us](mailto:rolf@pacificsound.us)

PRO

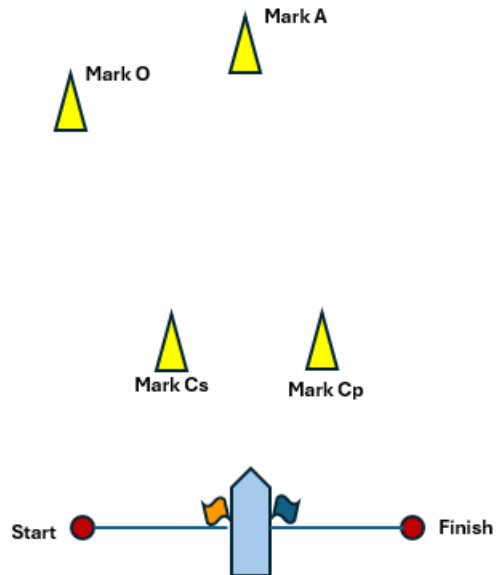
Becky Ashburn: 702-580-3230, [rebecca.ashburn5@gmail.com](mailto:rebecca.ashburn5@gmail.com)

Organizing Authority:

Richmond Yacht Club: 510-237-2821, [www.richmondyc.org](http://www.richmondyc.org)

## **RYC Multihull Invitational**

### **Buoy Race Courses**



#### **Marks**

A – Windward Mark

O – Offset Mark

C – Leeward Gate, pass between the marks and exit to Port or Starboard

#### **Courses**

1 – Start – A(p) – O – Finish

2 – Start – A(p) – O – C – A(p) – O – Finish

3 – Start – A(p) – O – C – A(p) – O – A(p) – O – Finish

4 – Start – A(p) – O – C – A(p) – O – A(p) – O – A(p) – O – Finish

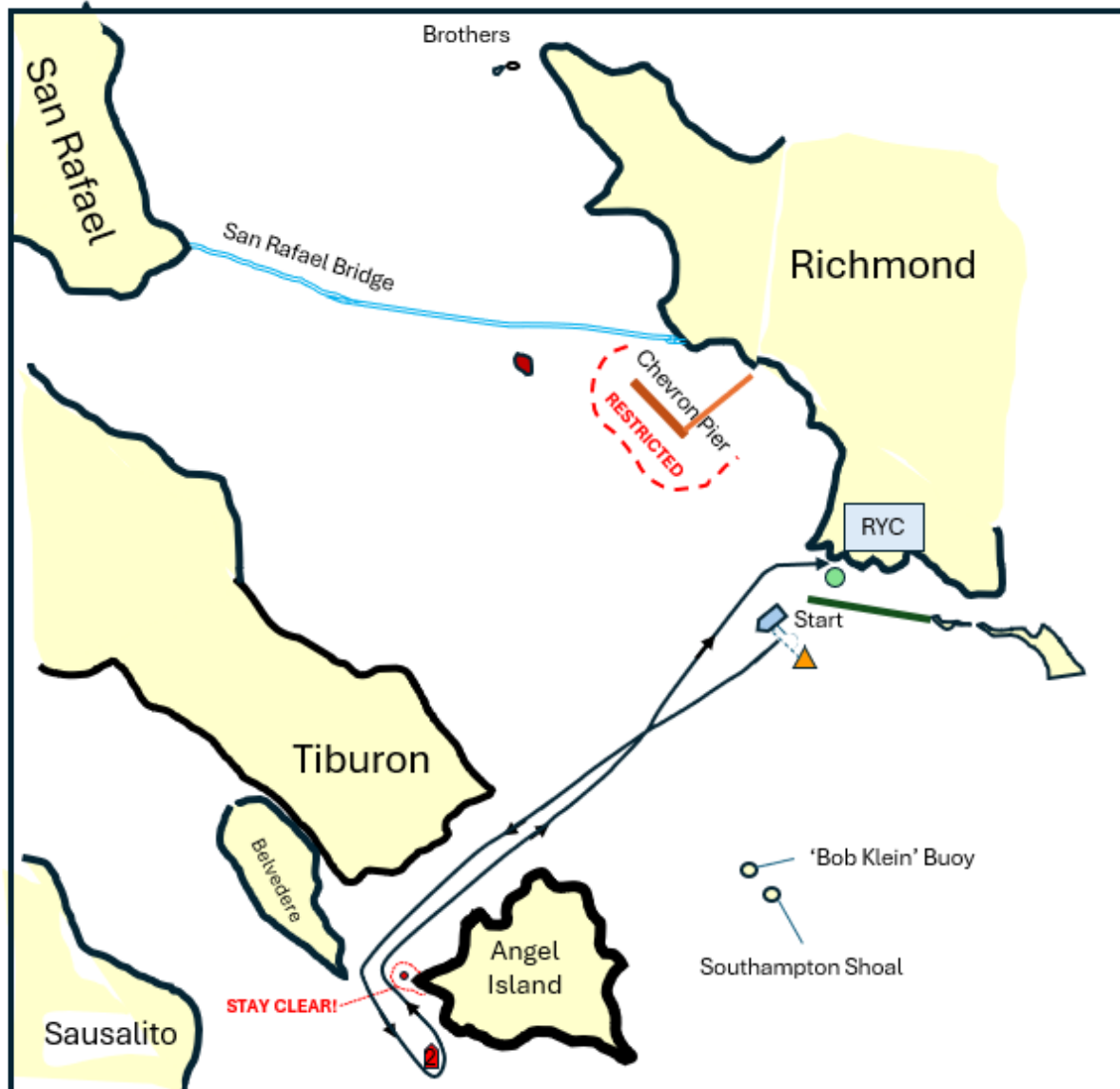
#### **Restrictions**

The Start and Finish lines are restricted except when starting or finishing.

#### **Interference with Shipping Traffic**

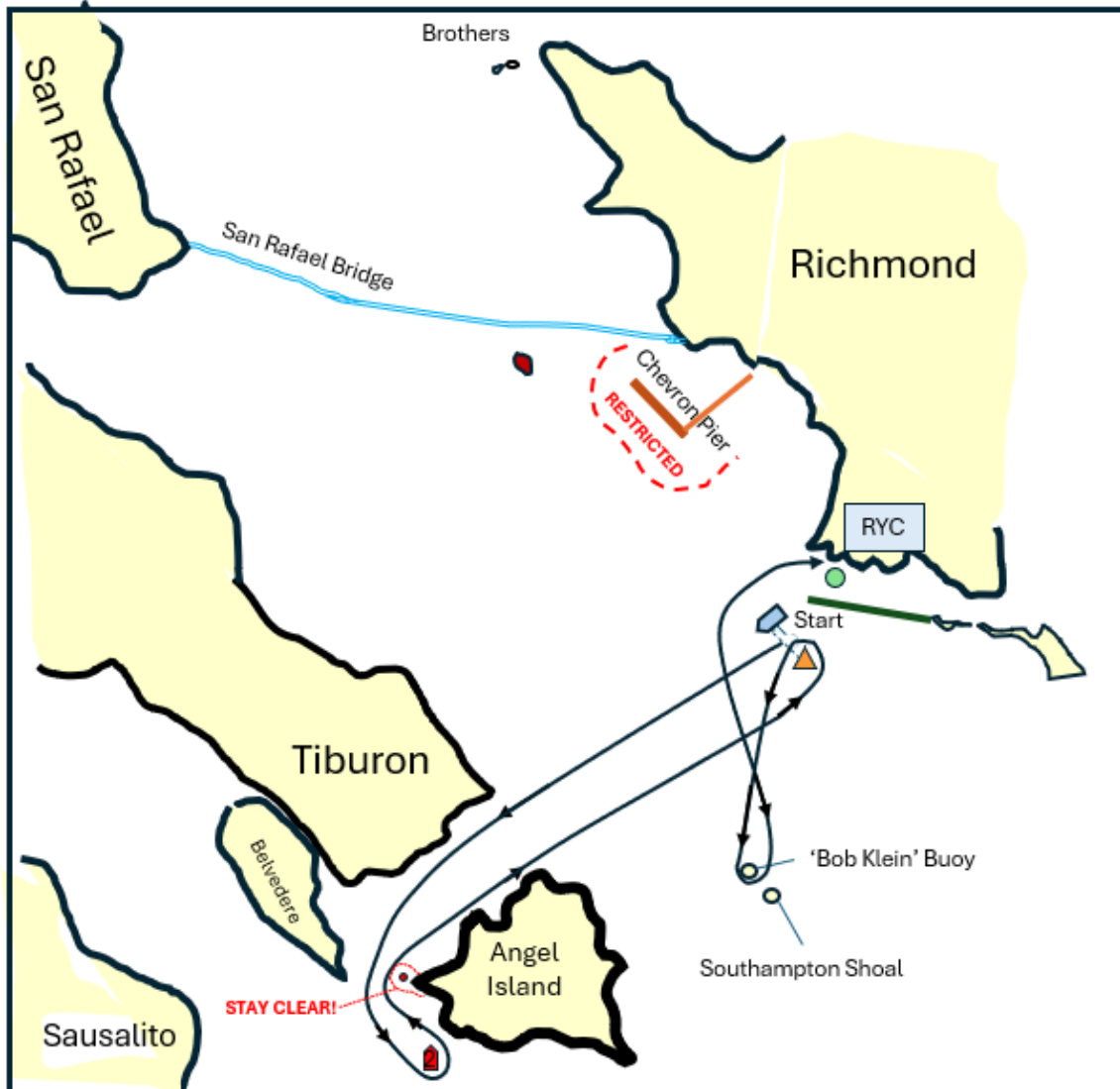
Boats shall not impede the passage of ship traffic. Rule 9 of the Inland Rules of the Road applies to all shipping traffic on San Francisco Bay and its tributaries.

## Richmond Multihull Invitational Long-Distance Race - Course 5



- Start (south of the end of the Richmond breakwater)
- Angel Island to port
- Knox buoy (R "2" FI R 4s) to port
- Angel Island to starboard
- Finish between G "7" FI G 4s and the platform on the RYC harbor seawall

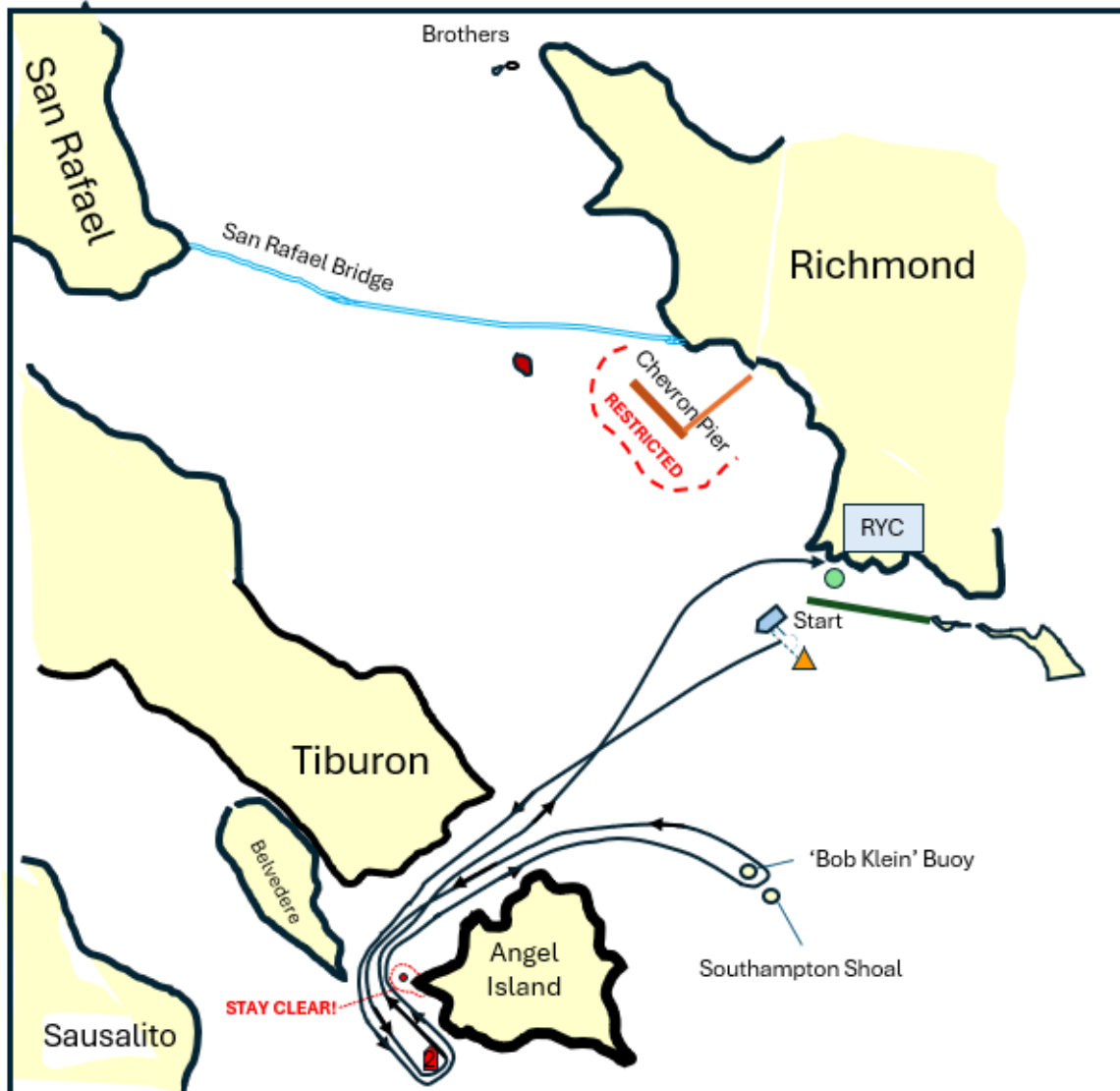
## Richmond Multihull Invitational Long-Distance Race - Course 6



- Start (south of the end of the Richmond breakwater)
- Angel Island to port
- Knox buoy (R "2" FI R 4s) to port
- Angel Island to starboard
- Starting pin to port
- 'Bob Klein' (yellow buoy) to port
- Finish between G "7" FI G 4s and the platform on the RYC harbor seawall



## Richmond Multihull Invitational Long-Distance Race - Course 7



- Start (south of the end of the Richmond breakwater)
- Angel Island to port
- Knox buoy (R "2" FI R 4s) to port
- Angel Island to starboard
- 'Bob Klein' (yellow buoy) to port
- Angel Island to port
- Knox buoy (R "2" FI R 4s) to port
- Angel Island to starboard
- Finish between G "7" FI G 4s and the platform on the RYC harbor seawall