



# 2024 HYC Mermaid Regatta

## August 24, 2024



**The Houston Yacht Club**  
3620 Miramar Drive, Shoreacres, TX 77571  
(281) 471-1255

### SAILING INSTRUCTIONS

The notation '[NP]' in a rule means that a boat may not protest another boat for breaking that rule. This changes RRS 60.1(a). The notation [DP] at the beginning of a rule means that a discretionary penalty applies, which may be less than disqualification.

#### 1. RULES

- 1.1 The regatta shall be governed by the rules as defined in the *Racing Rules of Sailing*.
- 1.2 When rule 20 applies, a boat may indicate her need for room to tack or her response by VHF on the channel identified here in the Sailing Instructions, see SI 2.2.

#### 2. NOTICES TO COMPETITORS

- 2.1 Notices to Competitors will be posted on the "Official Notice Board" located in the breezeway adjacent to the HYC offices.
- 2.2 On the water, the race committee intends to communicate with competitors on **VHF Channel 68**.
- 2.3 [DP] While racing, except in an emergency, a boat shall not make voice or data transmissions and shall not receive voice or data communication that is not available to all boats.

#### 3. CHANGES TO SAILING INSTRUCTIONS

- 3.1 Any change to the Sailing Instructions will be posted before 9:00 am on the day it will take effect, except that any change to the schedule of races will be posted by 8:00 pm on the day before it will take effect.

#### 4. SIGNALS MADE ASHORE

- 4.1 Signals made ashore will be displayed from the flagpole at Houston Yacht Club.
- 4.2 When flag AP is displayed ashore, '1 minute' is replaced with 'not less than 60 minutes' in Race Signals AP.

#### 5. SCHEDULE OF RACES

##### Saturday, August 24, 2024

09:30 - 11:15 am	Registration Check-in.
11:15	Competitor's Briefing - Beachcomber.
13:30 pm	Warning Signal for first race, one additional race is planned.
After Racing	Awards Ceremony
18:30	Salad Buffet - HYC Ballroom.

- 5.1 Up to two (2) races are planned.
- 5.2 No warning signal will be made after 4:00 pm.

#### 6. CLASS FLAGS

Class flags and order of starts are defined in the Addendum: *Class Flags and Starting Order for First Race*.

# SAILING INSTRUCTIONS

## 7. [NP] CHECK IN

- 7.1 Prior to the warning for the first race of each day, each boat shall check-in. "Check-in" means passing on starboard tack, close astern of the Race Committee Signal Boat displaying the code Flag "L" and hailing her sail number and being recognized by the Race Committee.
- 7.2 Boats failing to check-in shall receive a 20% scoring penalty in the first race of the day, without a hearing, in accordance with RRS 44.3 (c).

## 8. THE COURSES

- 8.1 The possible courses are described in the Addendum: *COURSE DESCRIPTIONS*. The course tables describe the order in which the marks are to be passed. All marks are to be left on port.
- 8.2 No later than the warning signal, the Race Committee Signal Boat shall display a numeral pennant to indicate the course to be sailed:
  - a. Numeral Pennant 1 = Course 1
  - b. Numeral Pennant 2 = Course 2
  - c. Numeral Pennant 3 = Course 3
  - d. Numeral Pennant 4 = Course 4
- 8.3 Courses will not be shortened. This changes RRS 32.

## 9. MARKS

Marks are floating shapes, or a fixed mark as described in *ADDENDUM: RACE AREA & MARK LOCATIONS*.

## 10. THE START

- 10.1 Races shall be started using RRS 26.
- 10.2 The starting line shall be between an orange flag from the signal boat on the starboard end and a mark or floating shape at the port end.
- 10.3 Boats whose warning signal has not been made shall avoid the starting area during the starting sequence for other races.
- 10.4 If any part of a boat's hull is on the course side of the starting line at her starting signal and she is identified, the race committee will attempt to hail her sail number. Failure to hail her number, failure of her to hear such a hail, or the order in which boats are hailed will not be grounds for a request for redress. This changes RRS 62.1(a).
- 10.5 A boat that does not start within five (5) minutes after her starting signal will be scored *Did Not Start* without a hearing. This changes RRS A5.1 and A5.2

## 11. CHANGE OF THE NEXT LEG OF THE COURSE

Legs of the course will not be changed after the preparatory signal. This changes RRS 33.

## 12. THE FINISH

- 12.1 The Finish Line will be between a staff displaying an orange flag on the Race Committee boat and a nearby floating shape.
- 12.2 If the race committee is absent when a boat finishes, she shall report her finishing time, and her position in relation to nearby boats, to the race committee at the first reasonable opportunity.

## 13. TIME LIMITS

- 13.1 Race Time Limit: 150 minutes for the first boat in a class to start, sail the course, and finish.
- 13.2 Finishing Window: 30 minutes for boats to finish after the first boat in its class starts, sails the course, and finishes.
- 13.3 Boats failing to finish within the Finishing Window shall be scored Did Not Finish (DNF) without a hearing. This changes RRS 35, A5.1 and A5.2.

## SAILING INSTRUCTIONS

- 13.4 If no boat in a class has finished within the Race Time Limit, the race for that class shall be abandoned.

### 14. PENALTY SYSTEM

RRS Appendix V1 & V2 are in effect.

### 15. PROTESTS AND REQUEST FOR REDRESS

- 15.1 A boat intending to protest another boat shall notify the race committee immediately after finishing and before leaving the racing area by sailing past the race committee signal vessel and hailing their intent. The protesting boat shall identify the other boat and receive acknowledgment from the race committee before leaving the racing area. Boats that do not finish shall report their intent to protest to any race committee vessel at the first possible opportunity. This adds to RRS 61.1(a).
- 15.2. Protests, Scoring Inquiries, Requests for Redress, and Requests to Reopen a hearing shall be written on forms available in the lobby of the HYC Clubhouse and delivered to a Judge there within the time limit stated in these Sailing Instructions.
- 15.3 For each line or fleet, the protest time limit is sixty minutes (60) after the race committee signal vessel enters the Houston Yacht Club harbor. This time will be posted on the official notice board.
- 15.4 A request for redress based on a protest committee decision shall be delivered in writing no later than thirty minutes (30) after the decision was posted on the official notice board.
- 15.5 Requests to reopen a hearing shall be delivered in writing no later than thirty minutes (30) after the decision was posted on the official notice board. This changes RRS 66.2(a)(2).
- 15.6 Scoring inquiries shall be delivered in writing within the protest time limit or thirty minutes (30) after the provisional results are posted on the official notice board, whichever is later. Scoring inquiries shall first be referred to the PRO, Juli Graham.
- 15.7 Notices will be posted no later than 30 minutes after the protest time limit to inform competitors of hearings in which they are parties or named as witnesses. The times and locations of the protest hearings and hearings to request redress, along with the names of the boats involved, will be posted on the official notice board within thirty minutes (30) after the end of the protest time limit. Hearings may be held with some Judges appearing by Zoom in the protest room, the location of which will be identified on the official notice board, beginning at the time posted. Parties and witnesses shall appear in person at all hearings.

### 16. SCORING

- 16.1 The scoring system is in accordance with RRS Appendix A.
- 16.2 One (1) race is required to be completed to constitute a regatta.
- 16.3 All boats will be scored by PHRF TOD (Time on Distance).
- 16.4 A boat's score is the total of her race scores. No score shall be excluded. This changes RRS A2.1.
- 16.5 Rule A5.3 applies.

### 17. OBSTRUCTIONS

Boats shall not enter any Ship Channel while racing. Ship Channels are designated as obstructions.

### 18. SAFETY REGULATIONS

[NP] A boat that retires from a race shall notify the race committee on the water, on **VHF Channel 68**. Or, if that is not possible, The Houston Yacht Club office by telephone: **281-471-1255**.

### 19. RISK STATEMENT

Competitors participate in the regatta entirely at their own risk. See RRS 3, Decision to Race. The organizing authority will not accept any liability for material damage or personal injury, or death sustained in conjunction with or prior to, during, or after the regatta.

# SAILING INSTRUCTIONS

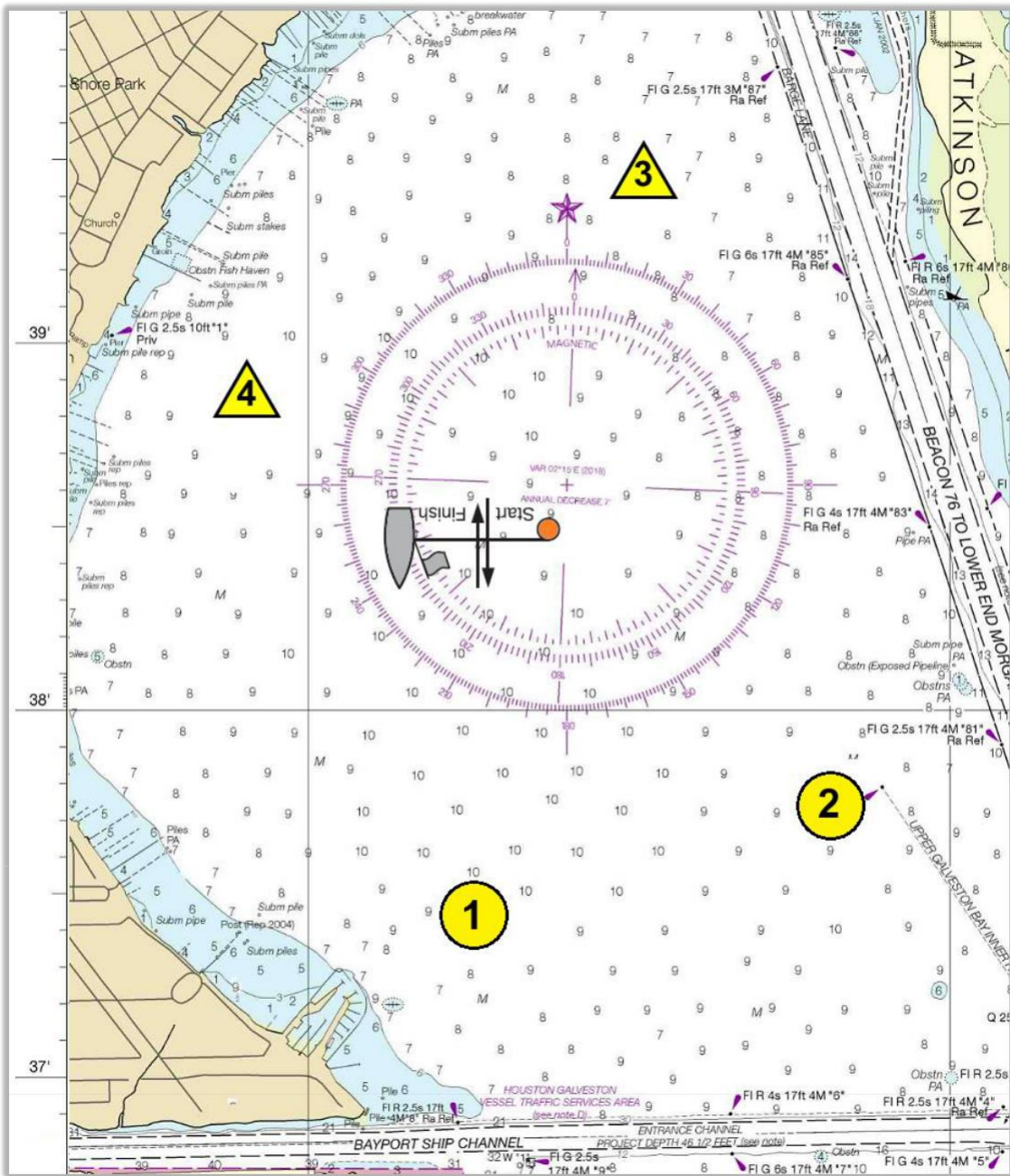
## 20. CONTACT INFORMATION

Principal Race Officer      Juliane Graham  
 Chief Judge                      Yolanda Cortes Mares

## ADDENDUM: RACE AREA & MARK LOCATIONS

### APPROXIMATE LOCATIONS OF MARKS:

MARK 1 ORANGE Floating Shape	29° 37.367'N, 94° 59.726'W	(29.622783, -94.995433)
MARK 2 FIXED, aka "High Range"	29° 37.790'N, 94° 58.214'W	(29.629833, -94.970233)
MARK 3 YELLOW Floating Shape	29° 39.833'N, 94° 58.919'W	(29.663883, -94.981983)
MARK 4 YELLOW Floating Shape	29° 38.839'N, 95° 00.114'W	(29.647317, -95.001900)



# SAILING INSTRUCTIONS

## ADDENDUM: COURSES DESCRIPTIONS

---

### **COURSE # 1** S. winds, Total Distance ~ 6.50 nm.

Start	Upwind	
Mark 1	Leave on Port	~ 0.75 nm.
Mark 2	Leave on Port	~ 1.38 nm.
Mark 3	Leave on Port	~ 2.14 nm.
Mark 4	Leave on Port	~ 1.44 nm.
Finish	Upwind	~ 0.75 nm.

### **COURSE # 2** SE. winds, Total Distance ~ 7.00 nm.

Start	Upwind	
Mark 2	Leave on Port	~ 1.00 nm.
Mark 3	Leave on Port	~ 2.14 nm.
Mark 4	Leave on Port	~ 1.44 nm.
Mark 1	Leave on Port	~ 1.51 nm.
Finish	Downwind	~ 1.00 nm.

### **COURSE # 3** NW. winds, Total Distance ~ 8.00 nm.

Start	Upwind	
Mark 4	Leave on Port	~ 0.75 nm.
Mark 1	Leave on Port	~ 1.51 nm.
Mark 2	Leave on Port	~ 1.38 nm.
Mark 3	Leave on Port	~ 2.14 nm.
Mark 4	Leave on Port	~ 1.44 nm.
Finish	Downwind	~ 0.75 nm.

### **COURSE # 4** NE. winds, Total Distance ~ 7.00 nm

Start	Upwind	
Mark 3	Leave on Port	~ 0.75 nm.
Mark 4	Leave on Port	~ 1.44 nm.
Mark 1	Leave on Port	~ 1.51 nm.
Mark 3	Leave on Port	~ 2.56 nm.
Finish	Downwind	~ 0.75 nm.

## ADDENDUM: CLASS FLAGS and STARTING ORDER for FIRST RACE

---

### **CLASS**

PHRF Spinnaker

PHRF Non-Spinnaker

### **FLAG**

Gray Class Flag

Pink Class Flag