



## Longyear Regatta - RS Tera SoCal 2024-2025 Series

The Organizing Authority (OA) - American Legion Yacht Club (ALYC)  
215 15th St, Newport Beach CA 92663



Saturday, September 28th 2024  
Newport Beach, California

### Sailing Instructions (SI's)

#### 1. NOTICES TO COMPETITORS

Notices to competitors will be posted on the official notice board on the ALYC Regatta Network page <https://www.regattanetwork.com/event/28704>

#### 2. CHANGES TO THE SAILING INSTRUCTIONS

2.1 Any change in the sailing instructions will be posted on the official notice board no later than thirty (30) minutes before it will take effect, except that any change to the schedule of races will be made by 2000 on the day before it is to take place.

2.2 Changes to the Racing Area may be made at the Competitors Meeting prior to the Race

#### 3. SIGNALS MADE ASHORE

Signals made ashore will be displayed from a signal mast located at the top of the dinghy ramp in the main boatyard of the Newport Sea Base

#### 4. SCHEDULE OF RACES

4.1 It is the intention of the Race Committee (R/C) to run five races

4.2 Warning signal for the first race is 1200

There will be no warning signal after 1530

#### 5. RACING AREA

Racing will take place in Newport Harbor approximately 3/4 NM southeast of Newport Sea Base in the area commonly referred to as 5-points

#### 6. COURSES

6.1 The diagram in Addendum A - Course Descriptions, shows the possible courses to be sailed as well as their corresponding number.

6.2 No later than the warning signal, the R/C signal boat will display on a white board the Class and the course number to be sailed.

#### 7. CLASSES

Boats will be divided into three classes and will be started using the following flags flown from the R/C signal boat no later than the 1st Warning of that Class:

- Gold Class will be designated by displaying a white flag with the letter "A"
- Silver Class will be designated by displaying a white flag with the letter "B"
- Bronze Class will be designated by displaying a white flag with the letter "C"

#### 8. STARTING

8.1 Races will be started using *RRS* Appendix U, Audible-Signal Racing System

8.2 The Starting Line shall be between a staff displaying an orange flag on the R/C boat and a red mark on the port side of the starting line.

8.3 Failure to hear an adequate hail or sound signal shall not be grounds for redress. This changes *RRS* 62.1

8.4 Due to the large number of boats scheduled for this event a "U" flag start may be imposed .

## 9. RECALLS

As a courtesy, the race committee will attempt to hail On Course Side (OCS) boats. Failure to execute this hail or failure to receive it shall not relieve a boat of her sole obligation to start properly, nor shall it constitute an improper action or omission of the race committee *RRS* 62.1(a).

## 10. TIME LIMITS

Boats failing to finish within fifteen (15) minutes after the first boat in her division sails the course and finished will be scored DNF without a hearing. This changes *RRS* 35.

## 11. HEARING REQUEST AND REQUEST FOR REDRESS

11.1 The Protest time limit is no later than 30 minutes after the R/C boat has returned to the Sea Base.

11.2 A boat shall inform the race committee at the finish line, as soon as practicable after she finishes of her intention to protest. This changes *RRS* 61.1

11.3 A party shall submit a protest or request for redress in writing.

11.4 Only the skipper may represent a boat in a hearing. No coach or other person may represent a boat or file a protest on her behalf. This changes *RRS* 63.3(a).

11.5 It is the sole responsibility of each boat involved to be ready and have witnesses available when the hearing is called.

11.6 The R/C will have protest forms available on site and also available on the official notice board on Regatta Network

## 12. SCORING

12.1 Scoring shall be in accordance with *RRS* Appendix A

12.2 If five or more races are completed, a boat's series score shall be the total of her scores excluding her worst score. This changes *RRS* A2.

12.3 Gold, Silver and Bronze Classes shall be scored Separately

## 13. FINISH LINE

The Finish Line shall be between a staff displaying a blue flag on the R/C finishing boat and a mark on the starboard side of the finish line

## 14. MARKS

14.1 All marks are to left to port

14.2 All marks are to sailed in the order shown in Addendum A. Color and shapes of marks may differ from diagram.

## 15. TROPHIES and FOOD

15.1 Trophies will be awarded at the Newport Sea Base after racing on September 28th

15.2 Food will be provided to racers after racing.

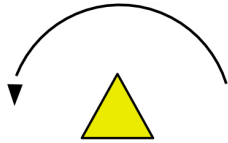
## 16. COACHING AND SUPPORT BOATS

Coach and support boats shall carry working VHF radios tuned to channel 72. All coach boats will act as safety boats when the need presents itself.

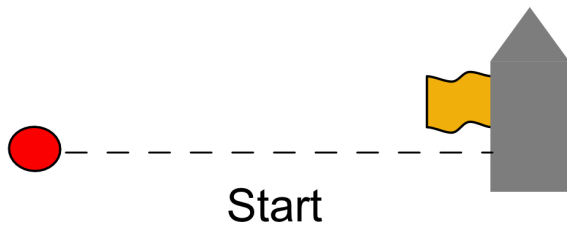
# ADDENDUM A



1 - Orange



1 - Yellow

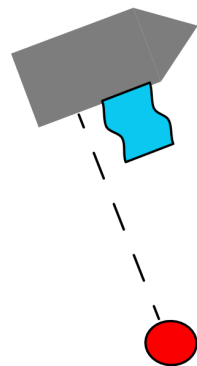
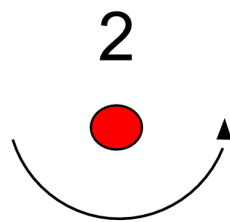


## Orange Courses

1. 1 - 2 - Fin
2. 1 - 2 - 1 - 2 - Fin

## Yellow Courses

3. 1 - 2 - Fin
4. 1 - 2 - 1 - 2 - Fin



Finish