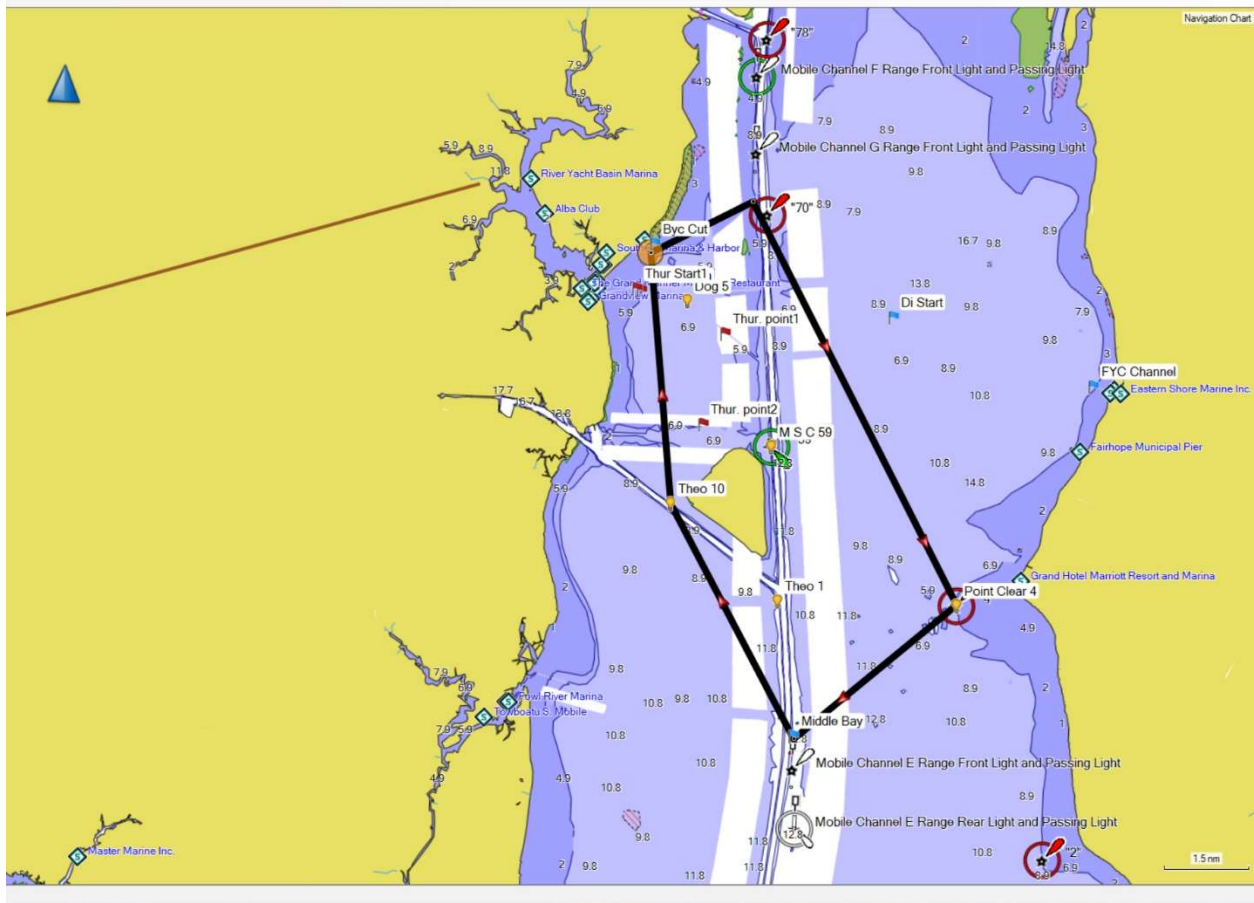


# Battle of Mobile Bay Long Course



MARK	POSITION	DISTANCE NM
START	N30 34.660 W88 04.161	0
MOBILE CHANNEL G RANGE	N30 35.624 W88 02.024	2.1
POINT CLEAR 4	N30 28.711 W87 57.308	10.1
MIDDLE BAY	N30 26.246 W88 00.678	13.9
THEODORE 10	N30 30.275 W88 03.515	18.7
FINISH	N30 34.660 W88 04.161	23.1

Pass all marks to **Starboard**.

# Battle of Mobile Bay Short Course



Clockwise Positions. Pass all marks to **Starboard**.

MARK	POSITION	DISTANCE NM
START	N30 34.660 W88 04.161	0
MSC 59	N30 31.336 W88 01.408	4.1
THEODORE 1	N30 28.973 W88 01.203	6.5
THEODORE 10	N30 30.275 W88 03.515	8.9
FINISH	N30 34.660 W88 04.161	13.3

Counterclockwise Positions. Pass all marks to **port**.

MARK	POSITION	DISTANCE NM
START	N30 34.660 W88 04.161	0
THEODORE 10	N30 30.275 W88 03.515	4.4
THEODORE 1	N30 28.973 W88 01.203	6.8
MSC 59	N30 31.336 W88 01.408	9.2
FINISH	N30 34.660 W88 04.161	13.3