

2024 James T. Liston Turkey Day Regatta

November 22-24, 2024

Organizing Authority: The Houston Yacht Club
Shoreacres, TX

SAILING INSTRUCTIONS POSTED NOVEMBER 19, 2024

Preamble The notation [NP] in a rule of the sailing instructions means that a boat may not protest another boat for breaking the rule. This changes rule 60.1(a).

1. RULES

- 1.1. This regatta will be governed by the *rules* as defined in the current edition of The Racing Rules of Sailing (RRS), the official Notice of Race (NOR) and these sailing instructions (SIs), including all Attachments and Addenda which may be applicable under these sailing instructions.
- 1.2. In case of conflict between the NOR and these SIs, the SIs will prevail. This changes RRS 63.7.
- 1.3. The J-24 class shall also be governed by the J-24 Texas Circuit Addendum, in the event of any conflict between the J-24 Texas Circuit Addendum and the NOR or SIs, the J-24 Texas Circuit Addendum shall control for purposes of the J-24 class.
- 1.4. [DP] Prior to the starting time for the first race of the day, all boats shall check-in with, and be recognized by, the Race Committee (RC) Signal vessel displaying Code Flag "L" by passing close astern on starboard tack and hailing her sail and class. Failure to check-in will result in a 20% scoring penalty for the first race of each day.

2. CHANGES IN SAILING INSTRUCTIONS

- 2.1. Any change to the SIs will be posted before 0900 hrs on the day it will take effect, except that any change in schedule of races will be posted by 2000 hrs on the day before it will take effect.

3. COMMUNICATIONS WITH COMPETITORS

- 3.1. Notices to competitors will be posted on the Official Notice Board (ONB) located in the breezeway adjacent to the Houston Yacht Club (HYC) Offices.
- 3.2. As a courtesy, all changes to race documents and official notices that have been posted to the ONB may be communicated to competitors via text to a cell phone number provided during registration. It is still the responsibility of the competitor to check the ONB.
- 3.3. On the water, the Race Committee (RC) intends to monitor and communicate with competitors on VHF radio:
Division 1 - channel 68
Division 2 - channel 69
- 3.4. [DP] While racing, from the first warning signal until the end of the last race of the day, except in an emergency, a boat shall not make voice or data transmissions and shall not receive voice or data communications that is not available to all boats.

4. CODE OF CONDUCT

4.1. [DP] Competitors and support persons shall comply with reasonable requests from race officials.

5. SIGNALS MADE ASHORE

5.1. Signals made ashore will be displayed from the signal mast on the HYC lawn.

5.2. When Code Flag "AP" is displayed ashore, '1 minute' is replaced with 'not less than 60 minutes.' This changes RRS Race Signals.

5.3. Signal flags may be flown alone or above one or more Division and/or class flags.

5.3.1. When flag AP over code pennant "1" is displayed, the signal applies to the Keelboat race area.

5.3.2. When flag AP over code pennant "2" is displayed, the signal applies to the Centerboard race area.

5.3.3. If only flag AP is displayed, the signal pertains to all race areas.

6. SCHEDULE OF RACES

6.1. All times are GPS times.

6.2. The starting order of races will be announced at the competitor's meeting and posted on the Official Notice Board.

Friday, Nov 22	1900 hrs	Keelboat Competitor's Briefing <i>HYC Ballroom</i>
Saturday, Nov 23	1000 hrs 1100 hrs	Centerboard Competitor's Briefing <i>Beachcomber</i> First Warning Signal – All Divisions
Sunday, Nov 24	1100 hrs 1500 hrs	First Warning Signal – All Divisions No Warning Signal after this time

6.3 Keelboats:

6.3.1 Six (6) races are scheduled.

6.3.2 No more than five (5) races will be sailed on Saturday.

6.3.3 No more than three (3) races will be sailed on Sunday.

6.4 Centerboards:

6.4.1 Seven (7) races are scheduled.

6.4.2 No more than (7) races will be sailed on Saturday.

6.4.3 No more than (4) races will be sailed on Sunday.

7. CLASS FLAGS

7.1. Divisions, classes and class flags are noted on **Attachment 1**.

8. RACING AREA

8.1. **Attachment 2** shows the location of the racing areas.

8.2. The races will be in that part of the Bay bounded by Morgan's Point on the north, the Bayport Ship Channel on the south, the Houston Ship Channel on the east and the La Port/Shoreacres shoreline on the west.

9. THE COURSES

9.1. The courses are shown in **Attachment 3**.

9.2. All marks shall be rounded to port, except the gate marks for the Keelboat race area.

9.3. No later than the warning signal, the RC Signal vessel will signal the course for that race. The RC Signal vessel will signal the Class and the course designation.

10. MARKS

10.1. The starting pin, for both race areas, will be an orange buoy.

10.2. The finishing pin, for both race areas, will be an orange buoy.

10.3. **For Division 1, Keelboats:**

10.3.1. The gate marks (2 S/P) will be yellow tetrahedrons.

10.3.2. **For PHRF**, the long windward mark W will be an 8 ft yellow tetrahedron. There is no offset mark at the long windward mark. There will not be a change mark for the long windward mark. The RC will move this original mark if there is a change of course.

10.3.3. For all other keelboat fleets, the short windward mark will be a green tetrahedron.

10.3.4. The offset mark will be an orange buoy.

10.3.5. Change marks will be orange tetrahedrons.

10.4 **For Division 2, Centerboards:**

10.4.1 Original marks for the course will be yellow tetrahedrons

10.4.2 Change marks will be orange tetrahedrons.

10.4.3 There will be no offset mark.

11. OBSTRUCTIONS

- 11.1. The Houston Ship Channel and the Bayport Ship Channels are obstructions. The RC signal vessel, start and finish lines are obstructions.

12. THE START

- 12.1. Races will be started in accordance with RRS 26.
- 12.2. The starting line will be between an orange flag on the Signal vessel on the starboard end and the course side of a floating shape on the port end.
- 12.3. [DP] Boats whose preparatory signal has not been made shall keep clear of the starting area and of all boats whose preparatory signal has been made.
- 12.4. If any part of a boat's hull is on the course side of the starting line at her starting signal and she is identified, the RC will, as a courtesy, attempt to hail her sail number. Failure to hail her number, failure to hear such a hail or the order in which boats are hailed will not be grounds for a request for redress. This changes RRS 62.1(a).
- 12.5. A boat starting more than 5 minutes after her start time will be scored Did Not Start (DNS) without a hearing. This changes RRS A5.1 and A5.2.
- 12.6. The RC may elect to trail a line (not to exceed 30') attached to a buoy behind the RC Signal vessel. Hitting the buoy or running over the line shall be treated as hitting the RC vessel.

13. CHANGE OF THE NEXT LEG OF THE COURSE

- 13.1. For Divisions 1 and 2, to change the next leg of the course, the RC will lay a new orange mark (or move the finishing line) and remove the original mark as soon as practicable. The change will be signaled before the leading boat in a class has begun the leg, although the new mark may not yet be in position.
- 13.2. **For the PHRF Division**, the original windward mark will be moved to its new position..
- 13.3. The Class Flag will be displayed with Code Flag C to indicate the class for which this change is being made. If there is no class flag, the change is made for all classes.
- 13.4. When in a subsequent change a mark is replaced, it will be replaced by the original mark.

14. THE FINISH

- 14.1. The finish line will be between a staff displaying a blue flag on a RC vessel and the course side of an orange buoy.
- 14.2. For windward finishes, the finishing line will be located approximately 0.1 NM to windward of the windward mark. For leeward finishes, the finish mark will be on the opposite side of the RC Signal vessel from the start line.
- 14.3. If the RC vessel is absent when a boat finishes, she should report her finishing time, and her position relative to nearby boats, to the RC at the first reasonable opportunity.
- 14.4. Code Flag A displayed from the finish boat shall indicate there is no more racing for the day.

15. PENALTY SYSTEM

- 15.1. Appendix V shall apply to all competitors except the J/24 competitors.
- 15.2. RRS 44.3 applies to the J/24 competitors.
- 15.3. [DP] A boat that has taken Penalty Turns shall notify the RC signal boat at the first reasonable opportunity after finishing the race in question and before leaving the race course finish area for that race. She shall also inform the RC of the identity of the other boat involved in the incident.

16. TIME LIMITS

16.1.

DIVISION	WINDWARD MARK TIME LIMIT	RACE TIME LIMIT	FINISHING WINDOW
1 - Keel Boats	30 min	90 min	20 min
2 - Centerboards	30 min	60 min	20 min
3 - Optis	20 min	45 min	15 min

- 16.2. If no boat has passed the first mark within the Windward Mark Time Limit for that Class, the race for that Class will be abandoned.
- 16.3. The Finishing Window Time is the time for boats of that Class to finish after the first boat sails the course and finishes. Boats failing to finish within the Finishing Window, and not subsequently retiring, penalized, or given redress, will be scored Time Limit Expired (TLE) without a hearing. A boat scored TLE shall be scored points for the number of boats finishing the race plus 2. This changes RRS 35, A5.1, A5.2 and A10.
- 16.4. Failure to meet any of the time limits will not be grounds for redress. The changes RRS 62.1(a).

17. PROTESTS AND REQUESTS FOR REDRESS

- 17.1. **Notification of Intent to Protest:** Intent to protest shall be signaled in accordance with RRS 61.1. Boats

intending to file a protest shall also inform the RC and be acknowledged before leaving the finishing area. If this instruction is not followed, the protest will be found invalid. This is in addition to and modifies the requirements of any class rules and RRS 60.1(a) and 61.1(a).

17.2. **Forms:** Hearing request forms are available in the HYC lobby.

17.3. **Time Limits:** The protest time limits for competitors will be posted on the ONB. The protest time limit for a boat requesting redress or protesting another boat is 45 minutes after the RC Signal vessel for that boat's particular Division enters the HYC harbor. On Sunday, November 24, the time limit for the RC to protest a boat or call a hearing to consider redress is the earlier of (i) 1700 hrs, or (ii) when it learns that a boat may have broken a rule or caused injury or serious damage, whichever is later. Requests for scoring reviews will be considered requests for redress per RRS 62.1. However, scoring errors shall first be reported to the RC as soon as they are noticed. If the RC refuses to correct an alleged scoring error, the time limit to request redress based on that decision is 30 minutes after refusal is given to the competitor either verbally or in writing (by text message at the phone number indicated on the competitor's entry form). The time limit to request redress based on a Protest Committee decision is (i) 30 minutes after the decision is posted, (ii) 30 minutes after the adjusted score is posted, or (iii) 1700 hrs on Sunday September 19, 2023, whichever is earlier. This modifies RRS 60.3, 61.3, and 62.2.

17.4. **Notice of hearings:** Protest hearing times will be posted on the ONB as soon as reasonably possible to inform relevant competitors of the hearing. It is each boat's obligation to check the ONB for hearing times and to provide accurate contact information on their entry form and on the Hearing Request Form, which includes a mobile telephone number where they can be contacted. As a courtesy only, the Protest Committee will attempt to notify any protested boat of the hearing time via text at the telephone number provided on the entry form. This satisfies the notice requirements of RRS 63.2.

17.5. All hearings will be held in the Commodore's Dining Room, upstairs in the HYC.

17.6. **Zoom:** Hearings may be conducted using Zoom. Zoom connectivity will be provided for protest committee members and involved competitors by the organizing authority. Competitors shall provide their own electronic equipment to participate in a Zoom hearing.

18. SCORING

18.1. Three (3) completed races are required to constitute a regatta.

18.2. The scoring system of RRS Appendix A shall apply.

18.3. No scores shall be excluded. This changes RRS A2.

19. SAFETY REGULATIONS

19.1. [DP] A boat that has checked in and then retires from a race shall notify the RC at the first reasonable opportunity. If this is not possible, she shall notify the HYC office by telephone at 281-471-1255.

20. TRASH DISPOSAL

20.1. Trash may be placed aboard official vessels at any time except during a starting sequence of any race.

21. HAUL-OUT RESTRICTIONS

21.1. [DP] Boats shall not be hauled out during the regatta except with and according to the terms of prior written permission of the Chief Judge.

21.2. No J/22 boats shall remove their rudders without permission of the Chief Judge.

22. DIVING EQUIPMENT AND PLASTIC POOLS

22.1. Careening by any means for the purposes of cleaning or inspecting the hull is prohibited. The hull may be cleaned by swimming or keelhauling using ropes or cloth.

22.2. Underwater breathing apparatus, plastic pools or their equivalent shall not be used during the regatta.

23. RISK STATEMENT

23.1. RRS 3 states: 'The responsibility for a boat's decision to participate in a race or to continue to race is hers alone.' By participating in this event each competitor agrees and acknowledges that sailing is a potentially dangerous activity with inherent risks. These risks include strong winds and rough seas, sudden changes in weather, failure of equipment, boat handling errors poor seamanship by other boats, loss of balance on an unstable platform and fatigue resulting in increased risk of injury. **Inherent in the sport of sailing is the risk of permanent, catastrophic injury or death by drowning, trauma, hypothermia or other causes.** The organizing authority and its volunteers will not accept any liability for material damage or personal injury, death or sickness sustained in conjunction with, prior to, during, or after the regatta.

24. PRIZES

24.1 Prizes will be awarded per NoR 14.

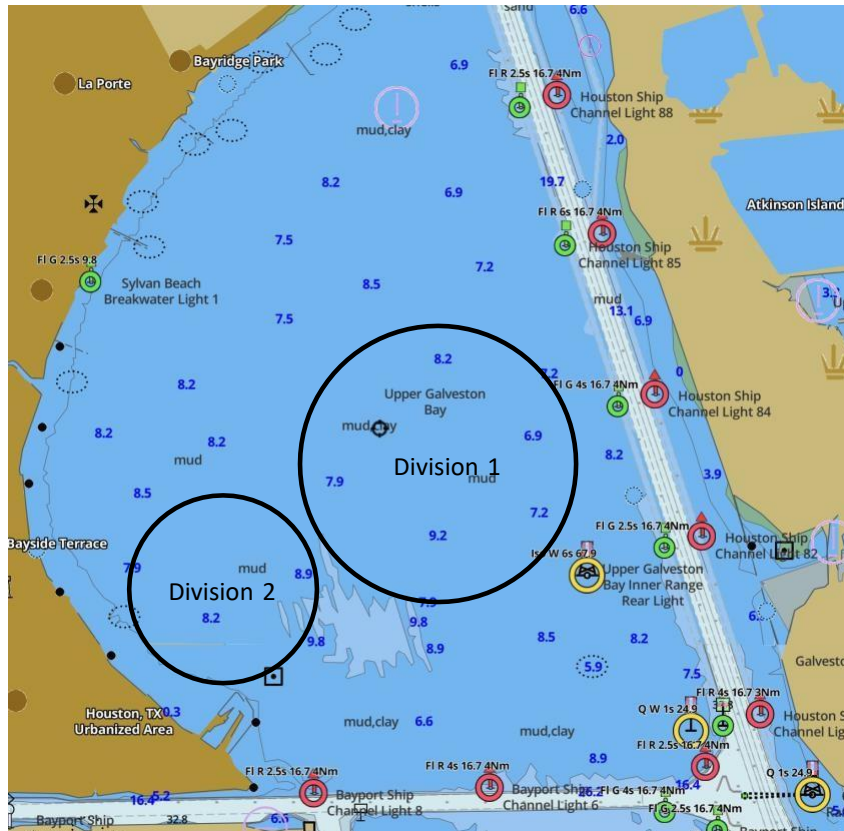
Attachment 1

Class Flags

CLASS	FLAG
DIVISION 1 (Pennant 1)	
Ensign	Ensign Class Flag
J24	J24 Class Flag
J22	J22 Class Flag
PHRF spin	Maroon
PHRF non-spin	Grey
J/105	J/105 Class Flag
DIVISION 2 (Pennant 2)	
Sunfish	pink
Hobie 16	maroon
Melges 15	M15 Class Flag

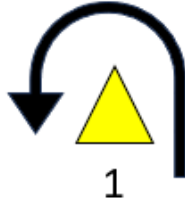
ATTACHMENT 2

Schematic of Upper Galveston Bay

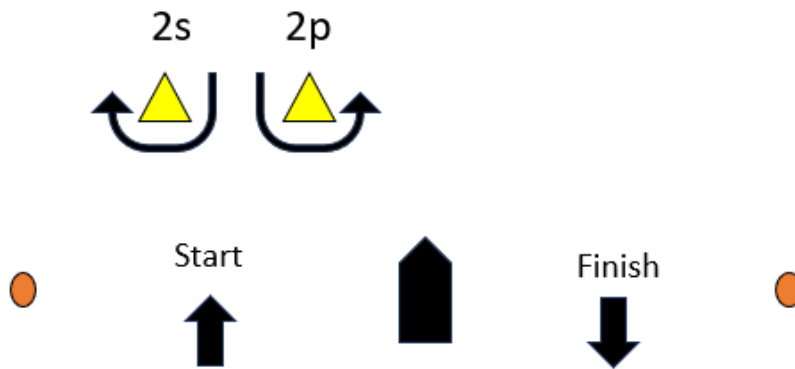


Attachment 3 COURSES

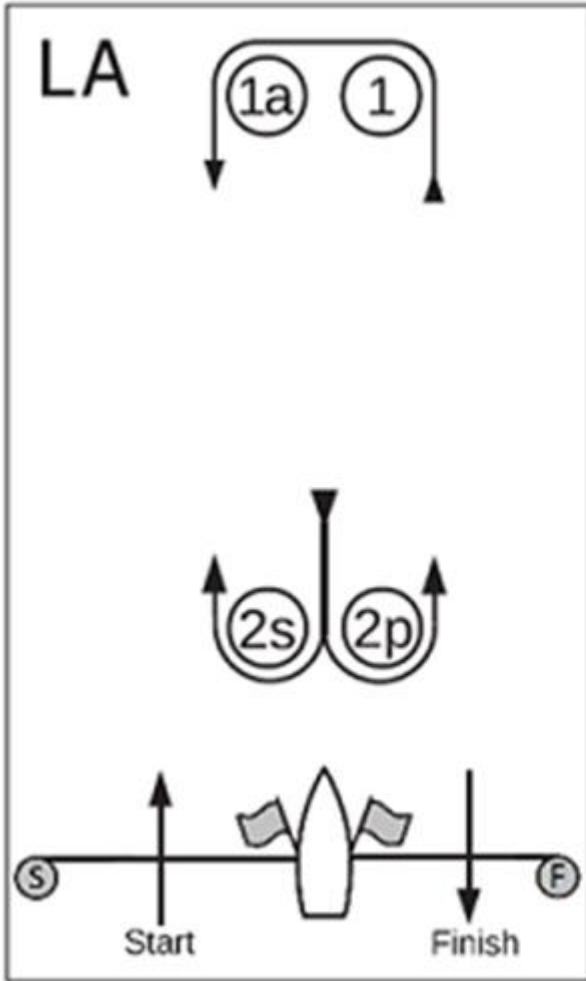
PHRF COURSE



PHRF Course	Windward/Leeward with Leeward Gate, Leeward Finish
Signal	Mark Rounding Order
1	Start - 1 - Finish
2	Start - 1 - 2s/2p - 1 - Finish
3	Start - 1 - 2s/2p - 1 - 2s/2p - 1 - Finish
4	Start - 1 - 2s/2p - 1 - 2s/2p - 1 - 2s/2p - 1 - Finish

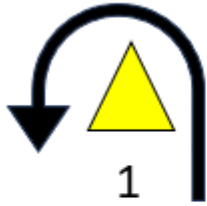


KEELBOAT



Course LA – Windward/Leeward with Offset Mark, Leeward Finish	
Signal	Mark Rounding Order
LA2	Start – 1 – 1a – 2s/2p – 1 – 1a – Finish
LA3	Start – 1 – 1a – 2s/2p – 1 – 1a – 2s/2p – 1 – 1a – Finish
LA4	Start – 1 – 1a – 2s/2p – 1 – 1a – 2s/2p – 1 – 1a – 2s/2p – 1 – 1a – Finish

Centerboard



Course L	Windward/Leeward, Leeward Finish
Signal	Mark Rounding Order
L1	Start - 1 - Finish
L2	Start - 1 - 2 - 1 - Finish
L3	Start - 1 - 2 - 1 - 2 - 1 - Finish
L4	Start - 1 - 2 - 1 - 2 - 1 - 2 - 1 - Finish

