



THE MARIN YACHT CLUB

MID-WINTER SERIES

November 9 and December 7, 2024
January 18 and February 15, 2025

SAILING INSTRUCTIONS

Organizing Authority: The Marin Yacht Club, San Rafael,
California

1 RULES

- 1.1 The regatta will be governed by the 'rules' as defined in *The Racing Rules of Sailing* (RRS).
- 1.2 Boats shall carry all safety and emergency equipment required by the YRA (for in the Bay races) and the US Coast Guard, including running lights. The race committee may file a protest against any boat observed in violation of these requirements.
- 1.3 Rule 40 is changed as follows: **All** competitors shall wear personal flotation devices while racing, except briefly while changing or adjusting clothing or personal equipment.

2 NOTICES TO COMPETITORS

Notices to competitors will be emailed to all competitors. The Notice of Race (NOR), Sailing Instructions (SI), and amendments thereto will be emailed to all competitors.

3 CHANGES TO SAILING INSTRUCTIONS

Any changes to the Sailing Instructions will be made by 1700 hours the day before each race, November 8, December 6, January 17 and February 14 and will be emailed to all registered competitors.

4 SCHEDULE

- 4.1 Starting times will be emailed to all competitors by 1700 the day before each race (see above in Section 3).
- 4.2 The first warning signal will be at **1255** with the first start at **1300**. Subsequent starts will be at the times posted in Appendix B.
- 4.3 The official race clock will be the time represented on cell phones.

5 HANDICAPS

Handicaps will be developed by the MYC race committee as follows:

- a. Boats which have a current NCPHRF certificate or BAMA rating shall receive that rating. Multihulls will be scored separately from monohulls.
- b. One-design boats shall receive their one-design class NCPHRF base rating.
- c. All other boats will receive NCPHRF ratings assigned by the race committee. Assigned ratings shall not be subject to redress.

6 CLASSES AND CLASS FLAGS

There will be one class: Non-spinnaker. No class flags will be flown.

7 THE COURSE

The course will be one of the eight courses described in the Sailing Instructions. The course will be determined from the conditions on the day of the race and announced by the Race Committee on VHF channel 71 before the start.

8 THE START

- 8.1 The starting line will be between the Race Committee boat, marked by the Race Committee Flag, and Channel Marker "17". All boats will leave 17 to starboard.
- 8.2 The race will be started using rule 26, except that there will be no visual signals. The start times will be emailed to all competitors by 1700 the day before the race.
- 8.3 Boats shall start in accordance with individual handicaps beginning at 1300 hours. The Race Committee may provide your starting time upon request prior to 1255. However, it is each boat's responsibility to start at the proper time. A standard five (5) minute start sequence shall be observed with an audible signal and VHF notification only.

1255	Warning Signal
1256	Preparatory Signal
1259	One minute Warning Signal
1300	Start Signal

The Race Committee *will attempt* to provide a signal for each subsequent start.

- 8.4 Boats observed OCS will be signaled by 2 short signals and required to restart following rule 29.1.
- 8.5 Boats who are not starting or who are restarting should keep clear of the start line and the boats who are starting at their scheduled time.
- 8.6 Propulsion may be used **until 1 minute before** each boat's starting time.

9 THE FINISH

- 9.1 The finishing line will be between the Race Committee, marked by the Race Committee Flag, and Channel Marker "17". Depending on the course boats may leave Channel Marker "17" to starboard or port.
- 9.2 All competitors should note the time when they finished. This may be used as a back-up to the Race Committee.
- 9.3 The time limit for the race shall be 2 ½ hours. Boats failing to finish by this time will be scored DNF.
- 9.4 Boats not completing the course shall report to the Race Committee as soon as possible and no later than 1530. The Race Committee will monitor USA VHF channel 71.

10 PROTESTS

- 10.1 Protests shall be written on US Sailing Protest forms available from the Racing Chair and lodged no later than 1700 hour on each race day.
- 10.2 Protests will be heard, in the approximate order of submission, at The Marin Yacht Club, as soon as practical after the race. Every effort will be made to hear protests on race day.

11 SCORING

- 11.1 Starting times are calculated based on handicaps; therefore, places will be determined by the order in which the boats cross the finishing line within the time limit.
- 11.2 Scoring for the series will comprise the top three (3) finishes for each boat registered.

12 RADIO COMMUNICATION

- 12.1 The Race Committee may use VHF USA channel 71 to communicate information about the races.
- 12.2 Except in an emergency or retiring from a race, a boat that is racing shall not make voice or data transmissions and shall not receive voice or data communications not available to all boats.

13 TROPHIES

Trophies will be awarded on the Marin Yacht Club Bar on February 15 approximately an hour and a half after the last boat finishes.

14 DISCLAIMER OF LIABILITY

Competitors participate in the regatta entirely at their own risk. See rule 4, Decision to Race. The organizing authority will not accept any liability for material damage or personal injury or death, sustained in conjunction with, prior to, during or after the regatta.

15 FURTHER INFORMATION

Ellen Clark, ellenpclark@comcast.net 415-509-6863

APPENDIX A: COURSES AND MARKS

- Course 1 (4.83 NM): START (G17-S), G15-P, R6-P, EBI-P, FINISH (G17-S)
- Course 2 (6.53 NM): START (G17-S), G15-P, R6-P, R18-P, G15-S, FINSH (G17-P)
- Course 3 (6.08 NM): START (G17-S), G15-P, EBI-P, G15-S, FINISH (G17-P)
- Course 4 (7.50 NM): START (G17-S), G15-P, R6-P, R16-P, G15-P, EBI-P, FINISH (G17-S)
- Course 5 (7.32 NM): START (G17-S), R14-P, R6-P, EBI-P, G15-S, FINISH (G17-P)
- Course 6 (7.90 NM): START (G17-S), R14-P, R6-P, R16-P, G15-P, EBI-P, FINISH (G17-S)
- Course 7 (8.95 NM): START (G17-S), R12-P, R6-P, R16-P, G15-P, R18-P, FINISH (G17-S)
- Course 8 (8.06 NM): START (G17-P), R Pinole CH E-P, FINISH (G17-S)

MARKS:

G17 – Green Marker “17” at entrance to San Rafael Channel (Birdcage) This is the maker at one end of the start and finish line. **NOTE:** The start or finish may leave G17 to starboard or port, depending on the course.

G15 – Green Buoy “15” North of West Tower of Richmond Bridge

R6 – Red Buoy “6” North of East Tower of Richmond Bridge

R12 – Red Buoy “12” South of the Richmond-San Rafael Bridge)

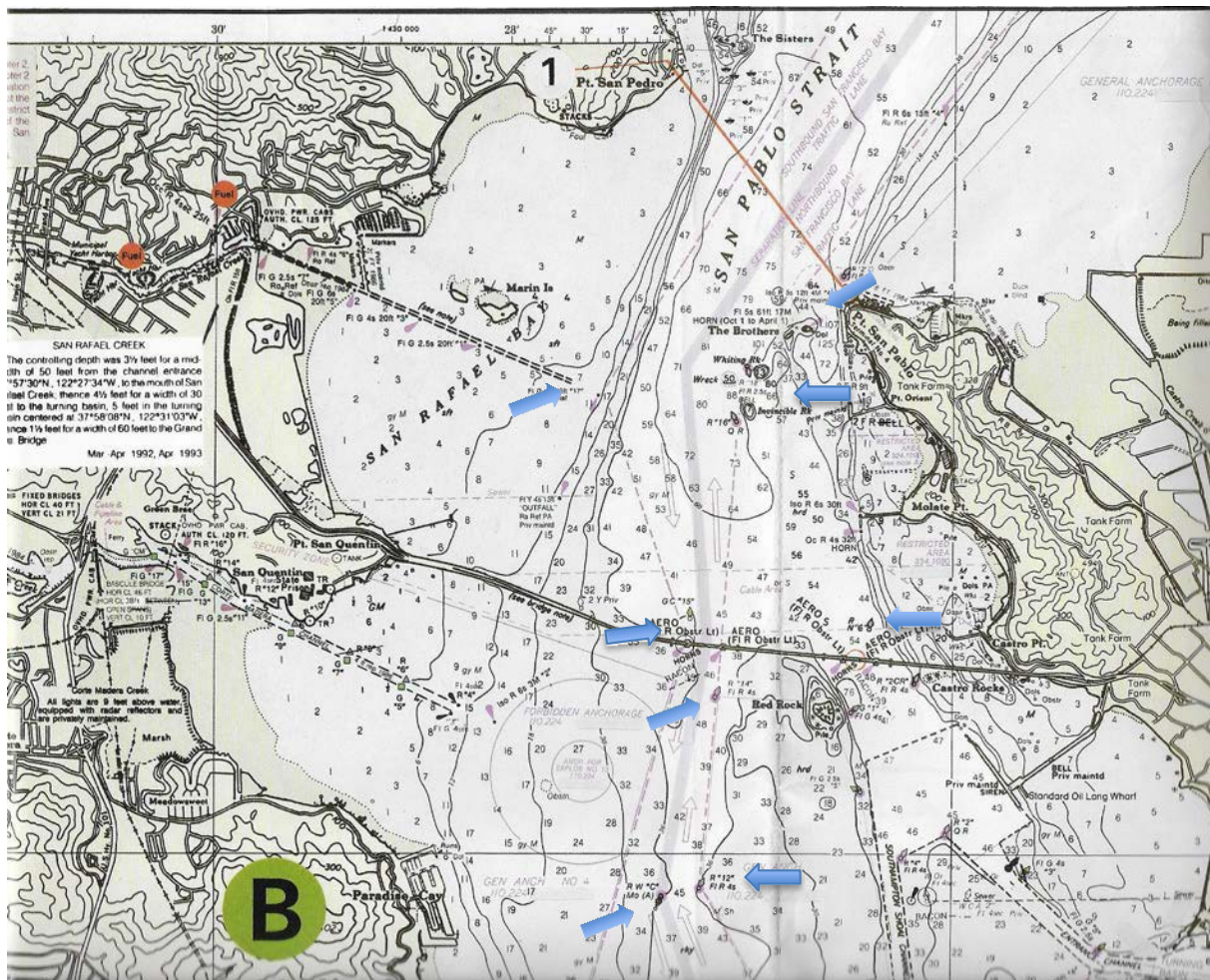
R14 – Red Buoy “14” South of East Tower of Richmond Bridge

R16 – Red Buoy “16” Southwest of Invincible Rock

R18 – Red Buoy “18” Northwest of Whiting Rock

EBI – East Brothers Island

R Pinole CH E – Red Channel Marker Northeast of Sisters (not shown on chart below)



APPENDIX B: COMPETITORS AND START TIMES

Competitors				Courses							
				1	2	3	4	5	6	7	8
				4.83 NM	6.53 NM	6.08 NM	7.50 NM	7.32 NM	7.90 NM	8.95 NM	8.06 NM
Sail#	Skipper	Boat	Rating								
	Larzul	Petit Bateau	210	13:00:00	13:00:00	13:00:00	13:00:00	13:00:00	13:00:00	13:00:00	13:00:00
143	Descalso	Sobrante	177	13:02:39	13:03:35	13:03:21	13:04:07	13:04:01	13:04:21	13:04:56	13:04:26
1674	Spurzem	Moondance	147	13:05:04	13:06:51	13:06:23	13:07:52	13:07:41	13:08:18	13:09:24	13:08:28
H35	Clark	Charisma	138	10:05:47	13:07:50	13:07:18	13:09:00	13:08:47	13:09:29	13:10:45	13:09:41
45	Collins	Bella	120	13:07:14	13:09:47	13:09:07	13:11:15	13:10:59	13:11:51	13:13:26	13:12:06
	Parker	Sombra del Mar	84	13:10:08	13:13:42	13:12:46	13:15:45	13:15:22	13:16:35	13:18:48	13:16:56
	Wolcott	Kiapa	75	13:10:52	13:14:41	13:13:41	13:16:52	13:16:28	13:17:46	13:20:09	13:18:08