



SAILING INSTRUCTIONS - RANDOM LEG FLEET

SCYA 95th Annual Midwinter Regatta

Saturday and Sunday, February 22 and 23, 2025

Organizing Authorities: Southern California Yachting Association and
Channel Islands Yacht Club, 4100 Harbor Blvd, Oxnard, CA 93035 (805) 985-2492

- 1. RULES** - The Regatta will be governed by the rules as defined in *The Racing Rules of Sailing (RRS)*. Written changes to the Sailing Instructions will be posted online by 0930 on the day of the event at <https://www.regattanetwork.com/event/28901>.

On the water, changes to a sailing instruction may only be made by hailing all competitors on VHF Channel 68 and/or displaying Signal Flag L, informing them of the change, and receiving confirmation from each competitor that they have heard and understood the change.

- 2. SCHEDULE OF RACES** – Each day the **first start** for the **Random Leg fleet** is planned for **1100**, approximately 30min prior to the first start for the Windward/Leeward fleet in the same area. Two Random Leg Races are planned over the 2-day regatta. At least 1 race is required to complete the regatta.
- 3. CLASS FLAGS** – One-design or numeral pennants will be employed as Class Flags. The classes, order of race starts, and pennants will be determined at the Skippers Meeting based on the entries in the Random Leg fleet.
- 4. RACING AREA, COURSES, AND MARKS** - The racing area will be the coastal waters of Ventura County. Random Leg courses will be chosen from the CIYC 2025 Random Leg Course Chart (Attachment A), which includes course distances between approximately 4 and 20nm. When an oil platform is a mark of the course, its associated mooring buoys are also marks of the course.
- 5. THE START** - Races will be started according to *Rule 26*. The port end of the starting line is the Mandalay spar buoy and the starboard end is an **orange flag** on the Race Committee (RC) boat. During each starting sequence the Class, Course, and Bearing to the first mark will be displayed from the stern of the Race Committee (RC) boat. Boats whose warning signal has not been made shall avoid the starting area. The RC *may* attempt to hail a boat if it is On Course Side (OCS) at its starting signal but is not required to do so. Any boat that suspects it is OCS should exonerate itself without waiting for a recall flag or to be hailed.
- 6. THE FINISH** - The finish line will be the reverse of the start line, ie, the Mandalay spar buoy defines the starboard end, and the **orange flag** near the stern of the RC boat defines the port end.

If the RC boat is not present, boats will record their own finish times. The finish line is an imaginary line from the Mandalay buoy to the Stack of the Mandalay Power Plant (34°12.39'N 119°15.08'W). A boat has finished when her bow is within 3 boat-lengths and shoreside of the

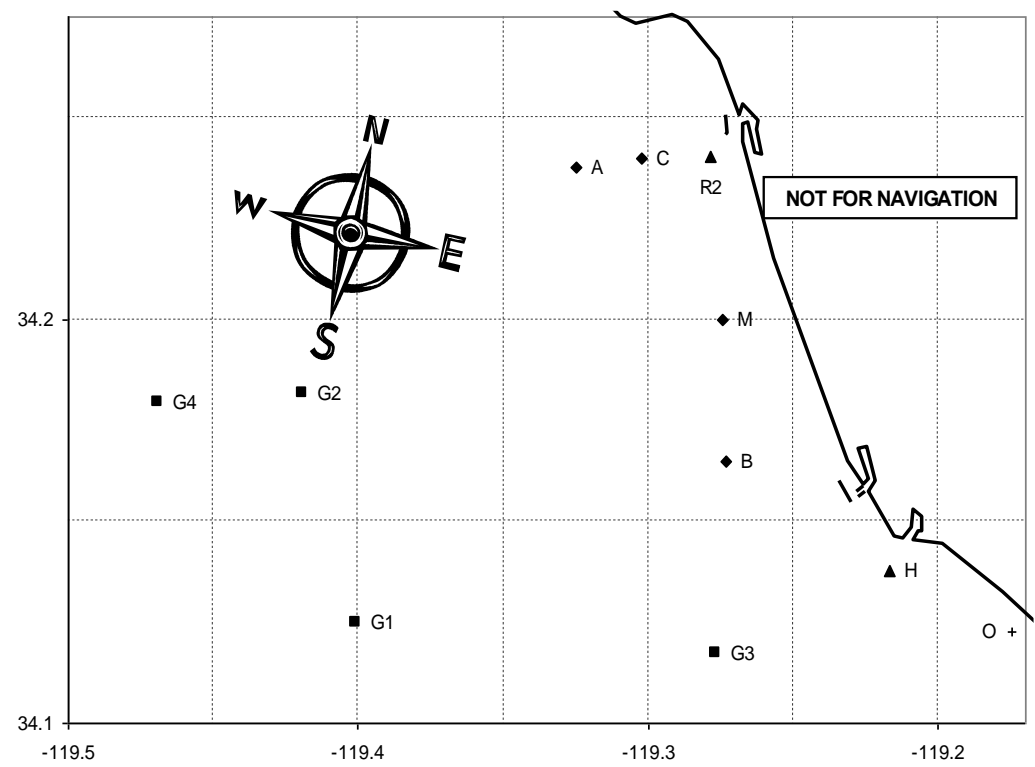
SCYA/ChIYC Midwinter Regatta – Sailing Instructions – Random Leg Fleet

Mandalay buoy, and the bearing from her bow to the Stack is 72°T (59°M). Skippers will report their finish times by text (PRO 415.518.4046) as soon as practical after finishing.

7. **SCORING** –Area A random leg ratings will be used for PHRF class scoring (time-on-distance). Time-on-time scoring will be used for ORCA and SCRHS (beach cat) classes. One design racers will be ranked in their order of finish. Each boat’s series score will be the sum of her scores for both days with no throw-outs or exclusions. This modifies *RRS A2.1*.
8. **RADIO COMMUNICATIONS** - All boats shall carry a radio capable of transmitting and receiving on VHF Channels 16 and 68 and shall check in with the RC at the beginning of each race day by VHF or by sailing past the stern of the RC. A boat that retires from a race shall notify the RC as soon as possible by VHF or text (PRO 415.518.4046).
9. **SAFETY EQUIPMENT** - Each skipper is responsible for compliance with applicable US Sailing Safety Equipment Requirements for Nearshore.
10. **HOSPITALITY AND AWARDS** – Skippers and Crew are invited to ChIYC after racing, approximately **1600** each day, for hot food, no-host bar, and race results. Race Awards will be presented at approximately **1700, Sunday, February 23**.

Attachment A - 2025 Channel Islands Yacht Club – Random Leg Course Chart

Course #	Distance (nm)	Waypoints (see Codes below)	Approx Bearing to 1 st Mark
1	9.34	Sm Hp Fm	143°T (130°M)
2	10.03	Sm Hs Bs Fm	143°T (130°M)
3	12.80	Sm Hs G3s Fm	143°T (130°M)
4	13.95	Sm Hs R2s Fm	143°T (130°M)
5	16.70	Sm Hs As Fm	143°T (130°M)
6	4.20	Sm Bp Fm	180°T (167°M)
7	9.90	Sm G3p Fm	181°T (168°M)
8	10.03	Sm Bp Hp Fm	180°T (167°M)
9	11.15	Sm Bs As Fm	180°T (167°M)
10	12.80	Sm G3p Hp Fm	181°T (168°M)
11	15.20	Sm G3s Cs Fm	181°T (168°M)
12	18.74	Sm G3s G1s Fm	181°T (168°M)
13	15.33	Sm G1p Fm	234°T (221°M)
14	18.74	Sm G1p G3p Fm	234°T (221°M)
15	14.40	Sm G2p Fm	261°T (248°M)
16	16.48	Sm G2p Bp Fm	261°T (248°M)
17	16.57	Sm G2s As Fm	261°T (248°M)
18	19.45	Sm G4p Fm	263°T (250°M)
19	7.40	Sm As Fm	313°T (300°M)
20	8.66	Sm As R2s Fm	313°T (300°M)
21	11.15	Sm Ap Bp Fm	313°T (300°M)
22	16.55	Sm Ap G3p Fm	313°T (300°M)
23	5.56	Sm Cp Fm	330°T (317°M)
24	9.60	Sm Cp Bp Fm	330°T (317°M)
25	6.41	Sm R2Vp Cp Fm	355°T (342°M)
26	8.66	Sm R2Vp Ap Fm	355°T (342°M)
27	14.76	Sm R2Vp G3p Fm	355°T (342°M)



Code	Marks	Approximate Location
A	Fish Sticks spar buoy	34° 14.5' N 119° 19.8' W
B	Wes Mark spar buoy	34° 09.9' N 119° 16.4' W
C	Chips spar buoy	34° 14.4' N 119° 18.2' W
H	Hueneme buoy	34° 08.3' N 119° 13.0' W
Sm/Fm	Mandalay spar buoy	34° 12.0' N 119° 16.5' W
R2	Ventura R2 whistle buoy	34° 14.4' N 119° 16.7' W
G1	Platform Gail	34° 07.5' N 119° 24.0' W
G2	Platform Gilda	34° 10.9' N 119° 25.1' W
G3	Platform Gina	34° 07.0' N 119° 16.6' W
G4	Platform Grace	34° 10.8' N 119° 28.2' W

SCYA/ChIYC Midwinter Regatta – Sailing Instructions – Random Leg Fleet