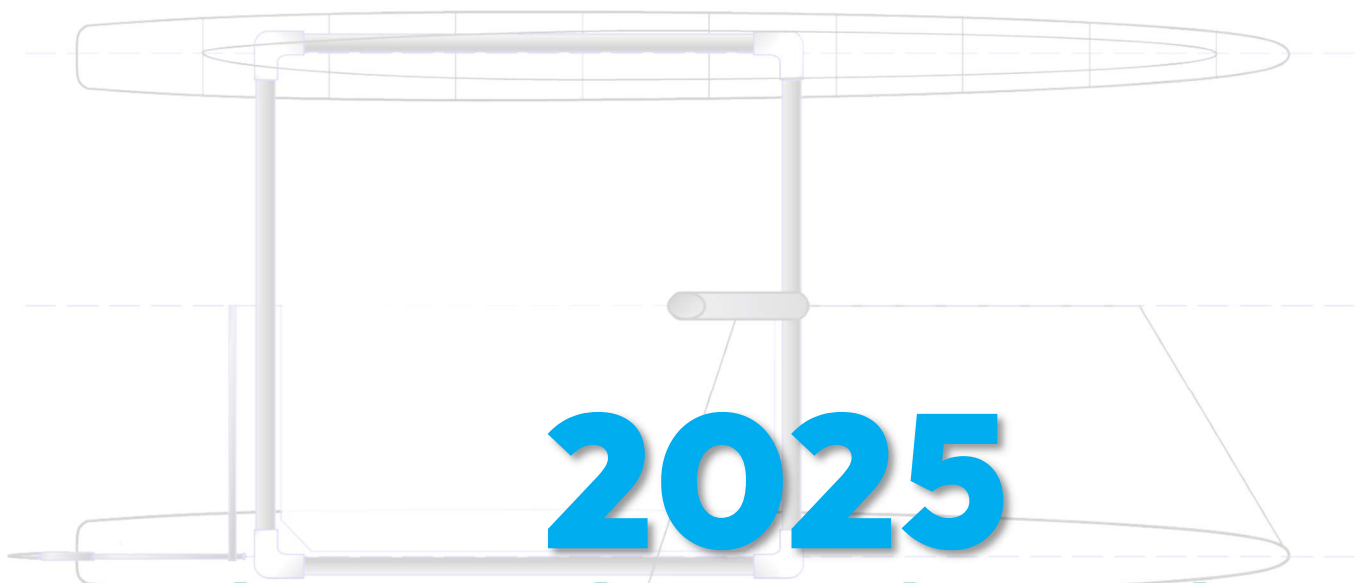


Hobie®



2025

North American Championship



September 26 – October 3, 2025
Pensacola Yacht Club, FL

Notice of Race & Sailing Instructions

The Organizing Authority (OA) is Pensacola Yacht Club.

1 RULES

- 1.1 The regatta will be governed by rules as defined by the Racing Rules of Sailing (RRS).
- 1.2 The Equipment Rules of Sailing that can be found:
(<https://d7qh6ksdplczd.cloudfront.net/sailing/wp-content/uploads/2024/06/29011153/Equipment-Rules-of-Sailing-2025-2028.pdf>)
- 1.3 The IHCA Class Rule Penalty Policy in Attachment C.
- 1.4 RRS 49.1 is changed to: 'The crew shall use no device designed to position their body outboard other than a trapeze, unballasted retractable seat or hiking strap'.
- 1.5 In RRS 90.3(e) the expression "24 hours" is changed to "30 minutes"
- 1.6 **[NP][SP]** RRS 40 and the preamble to Part 4 are changed as follows:
 - 1.6.1 The first sentence of RRS 40.1 is deleted and replaced by: "Each competitor shall wear an approved personal flotation device (PFD) according to Class Rule C8.1, or a personal flotation device that conforms to regulations of their own country, properly secured at all times while on the water except when temporarily adding or removing clothing."
 - 1.6.2 Add to the preamble of Part 4, after 'racing': "...except rule 40.1 as amended by NoR 1.6.1..."
- 1.7 RRS 60.2 (a) (1) is changed as follows:
"If the protestor is a boat, she shall hail 'Protest' and conspicuously display a red flag, at the first reasonable opportunity for each. She shall display the flag until she is no longer racing."
- 1.8 Addition to RRS 60.2 (a):
(3) "if the protestor is a boat, she shall inform the Race Committee at the finishing line immediately after finishing, or to a Committee as soon as practicable after she retires, of the boat(s) being protested".
- 1.9 In all rules governing this regatta:
Both 'athlete' and 'competitor' mean a person competing, or intending to compete, in the regatta.
- 1.10 **[SP]** denotes a rule for which a penalty from Bands 1 or 2 from the IHCA Class Rule Penalty Policy may be applied by a Committee without a hearing. (*This changes RRS A5.1*).
- 1.11 **[NP]** denotes a rule that shall not be grounds for protest by a boat and for which the Protest Committee may refuse to hold a hearing. (*This changes RRS 60.1, 60.5 (b) and 63.2 (a)*).

2 CODE OF CONDUCT [NP] [DP]

- 2.1 Competitors and support persons shall promptly comply with any reasonable request or instructions from the Regatta officials, including the officials in charge of the boat parking, beach master and the harbor/channel traffic.

3 ADVERTISING AND IDENTIFICATION

- 3.1 Boats may be required to display sponsors' advertising for the duration of the event chosen and supplied by the OA.
- 3.2 **[NP]** If the regatta is sailed as Qualifying and Final Series, each boat will tie a ribbon provided by the OA to the head of the mainsail corresponding to the fleet she is assigned.

4 ELIGIBILITY

- 4.1 This event is open to all boats of Hobie 16 catamarans conforming to the Class Rules.
- 4.2 Competitors may be a citizen of any country and must be a current member of their national Hobie Class Association.

5 REGISTRATION AND FEES

- 5.1 Event documents, current entries and registration are available on-line at:
<https://www.regattanetwork.com/event/28927>
- 5.2 To be considered an entry in the event, a boat shall complete all registration requirements and pay all fees.

- 5.3 On-line registration closes September 19th 2025 1200pm CST. Entries received after September 19th 2025 will be accepted at the sole discretion of the OA after explanation by the competitor of extenuating circumstances to be considered.
- 5.4 Registration fees are:

Fees & Refunds	Entry Fee		Refunds		
	Through August 19 th	August 20 th to September 19 th	Before August 19 th	From August 20 th to September 19 th	After September 19 th
	\$475	\$550	90%	50%	None

- 5.5 Registration fee includes Regatta T-shirt and all social events for competitors. Additional activities will be announced at registration. Specify your shirt sizes, and please pay for guest meals when registering on-line. Competitors registering after September 19th 2025 may not receive an event shirt.
- 5.6 Meal plans available for family members, support persons, and guests can be purchased for \$30/person per event/dinner

6 CHANGES TO RULES

- 6.1 Changes to the *rules* will be posted on the ONB before 0830am on the day it will take effect, except that any change to the schedule of races will be posted no later than 1900 on the day before it will take effect.
- 6.2 In accordance with RRS 90.2 (c), oral changes to the SI may be made on the water. A change is in effect when the Race Committee signal vessel displays code flag L with one sound. This means come within hail of the RC Signal Vessel to receive the oral changes.

7 PRELIMINARY SCHEDULE OF EVENTS

Day	Time	Action
Friday, September 26th	0900 – 1700	Equipment Inspection, Measurements and Check-in
Saturday, September 27th	0900 – 1700	Equipment Inspection, Measurements and Check-in
Sunday, September 28th	0900 – 1700 1400	Equipment Inspection, Measurements and Check-in Practice race
Monday, September 29th	0900 1100	Competitor's meeting First warning signal of the day
Tuesday, September 30th	1100	First warning signal of the day
Wednesday, October 1st	1100 1800	First Warning Signal of the day Competitor's dinner at Pensacola Yacht Club
Thursday, October 2nd	1100	First warning signal of the day
Friday, October 3rd	1100 1400 After Racing	First Warning Signal of the day No Warning Signal after this time Awards ceremony

- 7.1 No more than five (5) races are scheduled each day. The OA reserves the right to modify the program due to weather conditions or other causes.

8 EQUIPMENT – Please see Attachment D

- 8.1 Boats will be inspected and weighed, and crews will be weighed according to Class Rules, prior to check-in.
- 8.2 Boats and crews are subject to inspection at any time at the reasonable discretion of the Class, Race Officer, Measurer or his/her designee.
- 8.3 Boats shall display their assigned sail number.

9 [DP] REPLACEMENT OF EQUIPMENT

- 9.1 Substitution of equipment is not allowed unless authorized in writing by the Measurer or his designate before the first race or by the Race committee (Principal Race Officer or his designate) thereafter. Requests for substitution shall be made to the Race Committee at the first reasonable opportunity.
- 9.2 Any substitution granted via SI 9.1 will be posted on the Official Notice Board.

10 VENUE AND RACE AREA

- 10.1 The venue host address: Pensacola Yacht Club, 1897 Cypress St., Pensacola, FL 32502.
- 10.2 The location of the racing area is on Pensacola Bay, Southeast of the entrance to Bayou Chico. See Attachment B.

11 FORMAT OF RACING

- 11.1 The regatta will be sailed in a single fleet except when 60 or more boats are registered, in which case the regatta will consist of a Qualifying Series and a Final Series.

11.2 QUALIFYING SERIES

- 11.2.1 For the Qualifying Series, boats will be assigned to Red, Green, Yellow and Blue fleets of, as nearly as possible, equal size and ability.
- 11.2.2 Initial fleet assignments will be made by a Committee appointed by the Organizing Authority, and posted by 2000 on September 28th. The fleet assignment will not be grounds for a redress. *(This changes RRS 61.1(a)).*
- 11.2.3 Each group will race as follows:

RACE 1		RACE 2		RACE 3		ROUND ROBIN
First start	Second start	First start	Second start	First start	Second start	
Red	Yellow	Blue	Yellow	Green	Red	
Green	Blue	Red	Green	Blue	Yellow	

And so on.

- 11.2.4 If all groups have not completed the same number of races by the end of a day, the program will continue racing the following day until both fleets have completed the same number of races.
- 11.2.5 A maximum of three (3) Round Robins are scheduled for the Qualifying Series.
- 11.2.6 One (1) Round Robin is required to be completed to constitute a Qualifying Series. If one (1) Round Robin is not completed, the Qualifying Series will be extended to complete it.

11.3 FINAL SERIES

- 11.3.1 Boats will be assigned to Final Series Fleets Gold and Silver based on their ranks in the Qualifying Series. The top half of the fleet from the overall in the Qualifying Series will be assigned to the Gold fleet. The bottom half of the fleet in the Qualifying Series will be assigned to the Silver fleet.
- 11.3.2 Any recalculation of Qualifying Series rankings after boats have been assigned to final series fleets will not affect the assignments except that a redress decision may promote a boat to a higher fleet.
- 11.3.3 A maximum of twelve (12) races are scheduled for the Final Series.

12 SIGNALS MADE ASHORE

- 12.1 Signals made ashore will be displayed from the flagpole located in the main yard at Pensacola YC.
- 12.2 When flag AP is displayed ashore, '1 minute' is replaced with 'not less than 30 minutes.' *(This changes RRS 25.2 and Race Signals)*

13 CLASS FLAG

- 13.1 The class flag is a white flag with the Hobie Class logo in black.

- 13.2 If races are sailed as Qualifying and Final Series, the color flags for the groups starting in the next start will be displayed, at least, one minute before the warning signal.

14 OFFICIAL VESSELS

- 14.1 Official vessels will be identified as follows:
- Race committee signal vessel with a blue flag and white letters RC.
 - Protest Committee vessels with an INTERCO Flag J.
 - Safety vessels will display INTERCO Pennant 8.

15 COURSES

- 15.1 The diagram in Attachment A shows the courses, the course designations, including the approximate angles between legs, the order in which marks are to be passed, and the side on which each mark is to be left. Courses 3, 4 and 7 of the approved Class Courses will not be used.
- 15.2 No later than the warning signal, the Race Committee Signal Vessel may display the approximate compass bearing of the first leg and shall display the Race Course to be sailed.
- 15.3 If the offset or a Leeward Gate Mark (2s or 2p) is missing the remaining mark shall be left to port.

16 MARKS

- 16.1 Marks 1, 1a and Leeward Gate will be orange inflatable tetrahedrons.
- 16.2 New marks used according to SI 18 will be yellow inflatable tetrahedron.
- 16.3 The starting marks will be RC vessel with an orange flag and a green inflatable tetrahedron.
- 16.4 The finishing marks will be RC vessel with a blue flag and a red buoy.

17 THE START

- 17.1 The start line will be between the staff displaying an orange flag on the Race Committee Signal Vessel on the starboard end and the windward side of the starting mark on the port end.
- 17.2 To alert boats that a race will begin soon, an orange flag will be displayed at least one (1) minute before a warning signal is displayed.
- 17.3 The Race Committee may display a board at the stern of the Race Committee Signal Vessel showing the number of the OCS/UFD boats. Any improper action or omission associated with this display board will not be grounds for requesting redress. *(This changes RRS 61.1(a))*
- 17.4 **[SP] [NP]** A boat that does not start within five (5) minutes after her starting signal will be scored Did Not Start without a hearing. *(This changes RRS 35, A5.1 and A5.2)*

18 CHANGE OF THE NEXT LEG OF THE COURSE

- 18.1 If during a race the Race Committee changes the position of mark 1, mark 1a (offset mark) will no longer be a mark of the course for the remainder of that race. After rounding the new mark 1, boats will sail directly to the gate or finish line.
- 18.2 Any adjustment of any leg of the course, while boats are racing, by moving mark(s) up to 010° in bearing and/or 0.2 nm in length will not be considered a change of course. *(This changes RRS 33)*

19 THE FINISH

- 19.1 The finishing line is between staff displaying a blue flag on the Race Committee vessel on the starboard side and the finishing mark on port side.

20 TIME LIMITS AND TARGET TIMES

- 20.1 The mark 1 time limit, race time limit, the finishing window and target times are shown in the table below.

Mark 1 Time Limit	Race Time Limit	Finishing Window	Target Time
30 mins.	90 mins.	30 mins.	40 mins.

- 20.2 If no boat has passed the first mark within the mark 1 time limit, the race shall be abandoned. *(This changes RRS 32.1)*
- 20.3 **[SP] [NP]** The finishing window is the time for boats to finish after the first boat sails the course and finishes. Boats failing to finish within the finishing window, and not subsequently retiring, penalized or given redress, will be scored DNF. *(This changes RRS 35, A5.1 and A5.2)*
- 20.4 Failure to meet the target time will not be grounds for redress. *(This changes RRS 61.1(a)).*

21 PENALTY SYSTEM

- 21.1 RRS Appendix P, T and US Sailing Appendix V will apply.
- 21.2 RRS 44.2 is changed as follows:
- One turn penalty replaces the Two turns penalty, and
 - Unless the course is shortened to finish at the windward mark, penalties while in the zone of the windward mark or on the offset leg may be delayed and taken as soon as possible on the downwind leg.

22 HEARING REQUESTS

- 22.1 The protest time limit is 60 minutes after the last boat finishes the last race of the day or the Race Committee signals no more racing today, whichever is later. The time will be posted on the ONB.
- 22.2 Hearing requests shall be delivered, within the appropriate time limit, at the following link <https://docs.google.com/forms/d/e/1FAIpQLSfuRupOHjDCRHO6qcscNWg3UQjvw2UumKq8PZvGzArxfrG5sg/viewform> and using the email to deliver it: cesar@pycflboard.com
- 22.3 Notices will be posted no later than 30 minutes after the protest time limit to inform competitors of hearings in which they are parties or named as witnesses. Hearings will be held in the protest room, located at the race office beginning at as soon as possible.
- 22.4 Rule 42 infringements will be posted by the Protest Committee on the ONB before the protest time limit expires.
- 22.5 Within the protest time limit, the RC shall post on the ONB the boats that are disqualified or penalized under A5. A boat so notified may only request for redress within 30 minutes after that posting. *(This changes RRS 61.2 (b) (3))*
- 22.6 Notices of protests by the RC or the Protest Committee will be posted on the ONB to inform boats under rule 60.2 (a) (2).

23 SCORING

23.1 REGATTA SAILED IN SINGLE FLEET

- Four (4) races are required to constitute the Championship.
- When fewer than five (5) races have been completed, a boat's Series score will be the total of her race scores.
- When five (5) to eleven (11) races have been completed, a boat's Series score will be the total of her race scores excluding her worst score.
- When twelve (12) or more races have been completed, a boat's series score will be the total of her race scores excluding her two worst scores.

23.2 REGATTA SAILED IN QUALIFYING AND FINALS

- Four (4) races are required to constitute the Championship.
- If at the end of the Qualifying Series some boats have more race completed than others, scores for the most recent races will be excluded so that all boats have the same number of races completed.
- Rule A4.2 is changed so that the scores are based on the number of boats assigned to the largest fleet.
- Each Final Series fleet will be scored separately. Different final series fleets don't need to complete the same number of final races. The boats in the Gold fleet will be ranked always over Silver fleet.

- e) A boat's total score for the Championship will be the total of her race scores after applying excluded races, if any, as follows:
- Excluded races are applied separately to Qualifying and Final Series.
 - When five (5) or fewer races of a Series have been completed, a boat's Series score will be the total of her races scores.
 - When more than five (5) races of a Series have been completed, a boat's Series score will be the total of her races scores excluding her worst score.

24 COMMUNICATIONS

- 24.1 Notices to competitors will be posted on the Official Notice Board Online (ONB) at <https://www.regattanetwork.com/event/28927>
- 24.2 It is recommended (but not required) that all boats have a hand-held VHF radio on board to receive communication from the Race Committee and to communicate in emergency situations.
- 24.3 **[DP]** From the first warning signal until the end of the last race of the day, except in an emergency or as required by a rule, a boat shall not make voice nor data transmissions and shall not receive voice nor data communication that is not available to all boats.
- 24.4 The RC may broadcast on the designated VHF Channel:
- the course, bearing and distance information before the warning signal, start times, course changes and any other information important to racing.
 - Individual recalls and boats penalized under RRS 30.2, 30.3 or 30.4 using bow/sail numbers. (*This changes RRS 29.1, 30.2, 30.3 and 30.4*)
- 24.5 Any failure of a boat to receive or properly interpret the information or an action of the RC acting under SI 24.4 will not be grounds for request a redress (*This Changes RRS 61.1 (a)*).

25 SAFETY AND SUPPORT PERSON / SUPPORT VESSEL REGULATIONS

- 25.1 A towing line minimum 15 meters (48 feet) long and 6 mm (1/4 inch) diameter is required to be onboard while on the water.
- 25.2 **[DP]** Before the first warning signal of each day, all boats shall sail past the stern of the RC Signal Vessel on starboard tack and check in by hailing their sail/bow number. They shall continue to do so until their sail/bow number is verbally acknowledged by the RC.
- 25.3 **[DP] [NP] [SP]** A boat that retires from a race shall notify the RC before leaving the course area or immediately after arriving ashore via radio contact from PYC (Regatta Director or PYC staff).
- 25.4 Each support vessel shall have a working VHF radio and monitor the radio, an anchor suitable for anchoring in the waiting area, a basic first aid kit and **a kill-cord attached to the driver at all times while on the water.**
- 25.5 **[SP]** No drones are allowed closer than 500 meters from racing areas from the Warning Signal for a race and after the last boat has finished the race. As a penalty for breaching this rule the protest committee may impose a discretionary penalty to all boats associated with the owner / operator of the drone. This *rule* does not apply to the OA drones.
- 25.6 Support persons and Support Vessels shall register with the race office during registration times. They shall declare which boat or boats to which they are attached. Support persons and support vessels shall declare proof of insurance and provide photo ID of the driver. Vessels shall comply with local laws and regulations regarding their operation.
- 25.7 Under all circumstances support vessels are expected to assist any boat in danger.
- 25.8 Support boats shall display a flag or other identification symbol, as may be required by the RC.
- 25.9 **[DP] [NP]** Team leaders and other support personnel / spectator vessels shall be outside of the racing area described in 25.10 and 25.11 below from the Preparatory Signal until the last boat finishes the race or the RC displays a postponement, general recall or abandonment signal, unless they are helping a boat in danger. Breaking this rule will be penalized by the Protest Committee.
- 25.10 The **racing area** is defined as a surface which borders are over 100 meters from the layline.
- 25.11 The **starting area** is a rectangle with its borders 100 meters to windward and leeward and 100 meters to pin ends of the starting line.

26 [NP] INSURANCE

- 26.1 Each participating boat shall have current third-party liability insurance with a minimum coverage of not less than \$100,000 USD. Proof of insurance must be presented at registration.

27 PRIZES

- 27.1 The top placing North American Team shall be named the 2025 Hobie 16 North American Champions.
- 27.2 If 5 or more boats of Under16 and Under21 categories are registered:
- a) The top placing Under21 North American Team shall be named the 2025 Hobie 16 North American Under21 Champions.
 - b) The top placing Under16 North American Team shall be named the 2025 Hobie 16 North American Under16 Champions.
- 27.4 Additional awards may be presented, at the discretion of the OA.

28 DISCLAIMER OF LIABILITY

- 28.1 Competitors participate in the event entirely at their own risk. See RRS 3, Decision to Race. The OA will not accept any liability for material damage or personal injury or death sustained in conjunction with or prior to, during, or after the regatta.
- 28.2 Sailing is by its nature an unpredictable sport and therefore inherently involves an element of risk. By taking part in the event, each competitor and the responsible adult agree and acknowledges that:
- a) They are aware of the inherent element of risk involved in the sport and accept responsibility for the exposure of themselves and their boat to such inherent risk whilst taking part in the event;
 - b) They are responsible for the safety of themselves, their boat and their other property whether afloat or ashore;
 - c) They accept responsibility for any injury, damage or loss to the extent caused by their own actions or omission;
 - d) Their boat is in good order, equipped to sail in the event and they are fit to participate;
 - e) The provision of a race management team, patrol boats and other officials and volunteers by the event organizer does not relieve them of their own responsibilities;
 - f) The provision of patrol boat cover is limited to such assistance, particularly in extreme weather conditions, as can be practically provided in the circumstances.

29 FOR MORE INFORMATION

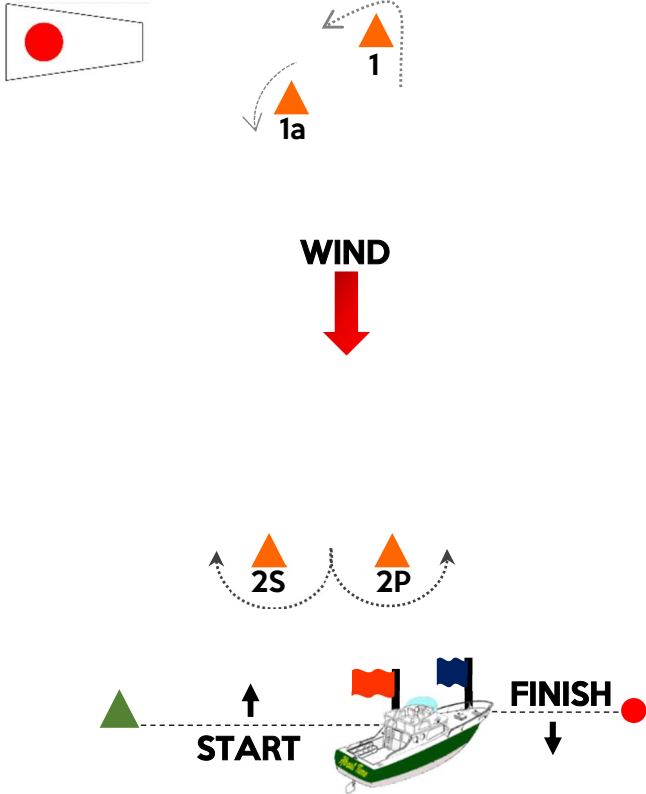
- | | | |
|-----------------------------|----------------|--|
| • Regatta Chair: | Susan Domagala | susan@pycflboard.com |
| • PRO | Hal Smith | hal_smith@mindspring.com |
| • Hobie Class President | Jason Sanchez | jmsgroupcontracting@gmail.com |
| • Technical Committee Chair | John Smith | rules@hobieclass.com |

Approved by Hobie Class Association of North America
Signature: Jason Sanchez

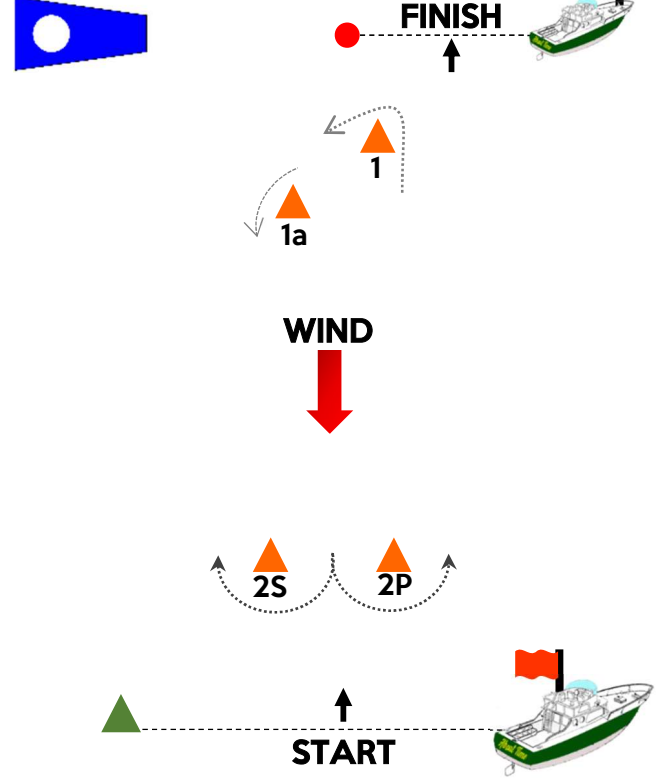
Principal Race Officer
Signature: Hal Smith

Attachment A COURSES DIAGRAMS

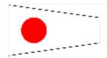
COURSE 1



COURSE 2



COURSE AND ORDER TO PASS THE MARKS



Pennant 1: Start – 1 – 1a – 2S/2P – 1 – 1a – Finish



Pennant 2: Start – 1 – 1a – 2S/2P – 1 – 1a – 2S/2P – Finish

MARKS



1, 1a, 2S and 2P
(Inflatable Orange)



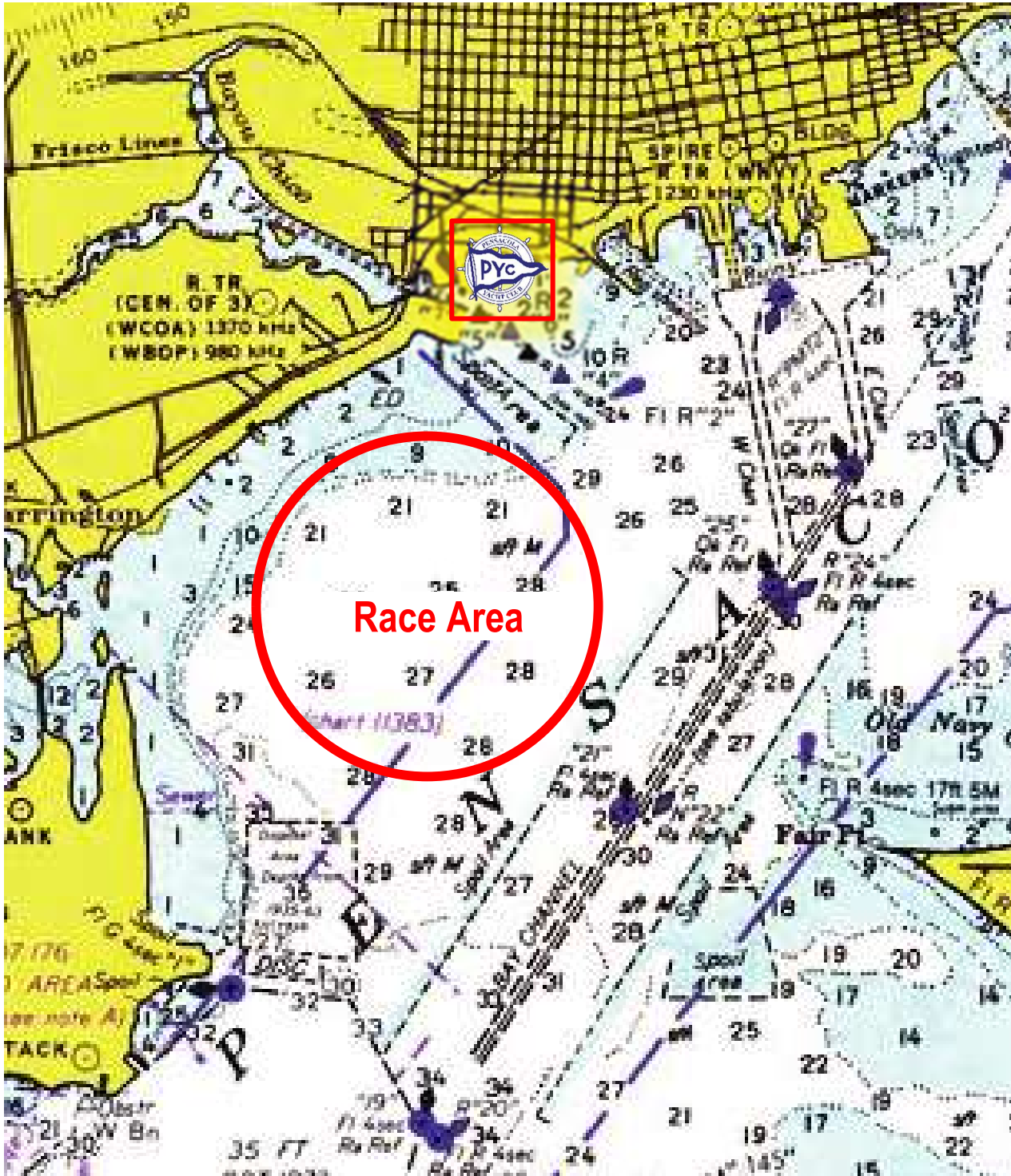
Starting mark



Finishing mark

Marks are to be rounded to **PORT**, except that boats shall sail between the gate marks (2S/2P) from the direction of the previous mark and round either gate mark.

Attachment B RACE AREA



Attachment C

IHCA Class Rule Penalty Policy

- C.1. Start by using the Base Penalty Band Tables to find which band applies except band 3 and 4 which may only be increased. Consider the 'base penalty' to be at the mid-point of the band. Then determine if there is a cause to increase or decrease the penalty within the band or to change the band.
- C.2. Penalties are divided into 4 bands with the midpoint being the normal base penalty:
- (a) Band 1 – 10 - 30% (midpoint 20%)
 - (b) Band 2 – 30 - 70% (midpoint 50%)
 - (c) Band 3 – DSQ
 - (d) Band 4 – DNE
- C.3. A positive answer to these questions would lead to reducing the penalty.
- (a) Was the breach accidental?
 - (b) Was there a good reason or justification for the breach?
 - (c) Was the breach reported by the competitor?
 - (d) Did anyone who was not part of the boat's crew or support team contribute to the breach?
- C.4. A positive answer to these questions would lead to increasing the penalty.
- (a) Was the breach repeated?
 - (b) Was the breach deliberate as opposed to a misjudgement or carelessness?
 - (c) Was there any attempt to conceal the breach?
 - (d) Was anybody inconvenienced?
- C.5. The Protest Committee may use other questions to determine if a penalty should be increased or decreased.
- C.6. To calculate and apply the penalty:
- (a) The discretionary penalty may not make a boat's score worse than retirement or disqualification.
 - (b) Percentage penalties are calculated to the nearest tenth of a point, (0.05 to be rounded upward).
 - (c) When the breach affected racing performance, it should be applied to all races sailed that day, provided any protest is valid for all races.
 - (d) When the breach does not affect racing performance or safety, the penalty should be applied to the race sailed nearest in time to that of the incident as specified in RRS 60.5
 - (e) The penalty was increased because..... or There were no circumstances to justify increasing the penalty.
 - (f) The penalty applied is xx% applied to [all races of the day] or to [race numbers yy]
- C.7. When writing a decision applying a discretionary penalty, include the following statements:
- (a) Using the DP Guide a starting penalty of xx% was decided
 - (b) The penalty was decreased because.....or There were no circumstances to justify decreasing the penalty.
 - (c) The penalty was increased because..... or There were no circumstances to justify increasing the penalty.
 - (d) The penalty applied is xx% applied to [all races of the day] or to [race numbers yy]

Penalty Tables

Band	CREW-WEIGHT	Penalty
2	Less than 2 kg under combined minimum crew weight.	But not greater than a DSQ - applies for the race before the check.
3	2-5 kg under combined minimum crew weight.	DSQ - applies to all races of the day/round prior to the check.
4	More than 5 kg under combined minimum crew weight.	DNE - applies to all races of the day/round prior to the check.
4	More than 2 kg under combined minimum crew weight and no corrector weights carried although weigh-in indicated the need for corrector weights.	DNE - applies to all races of the day/round prior the check.

Band	EQUIPMENT & BOAT	Penalty
1	Illegal righting line dimensions.	But not greater than a DSQ - applies to all races where used.
1	Violation of Gen. Rule 16.3 or TIWI Rule C 5.2 (a) (1) (<i>Compasses and electronic devices</i>).	But not greater than a DSQ - applies to all races where used.
3	Personal flotation device (PFD) does not meet class rule requirements.	DSQ - applies to all races where used.
3	Not carrying PFD.	DSQ - applies to all races where not carried.
3	Missing righting line.	DSQ - applies to all races where missing.
3	Violation of rules related to downhaul.	DSQ - applies to all races where used.
4	Spinnaker-pole blunt end cap missing.	DNE - applies to all races where missing.
4	Illegal sails, battens, rudder-blades, daggerboards & trampolines.	DNE - applies to all races where used.

Attachment D

TECHNICAL COMMITTEE

NOTES TO COMPETITORS

(Not part of the NoR)

D.1 CLASS MEMBERSHIP

D.1.1 As the North American Hobie Cat 16 Championships is classified as a regional event all crew members on board shall be members in good standing of the International Hobie Class Association, e.g. through a full membership of Hobie Class Association North America. This to meet the requirements of General Class Rule 26.

D.2 PERSONAL FLOTATION DEVICE (PFD)

D.2.1 Bring your PFD for inspection during registration at the desk of the Technical Committee. PFDs shall meet the requirements of General Class Rule 8.1.

D.3 RIGHTING LINES

D.3.1 Mount a righting-line meeting the requirements of General Class Rule 8.2 on the boat.

D.4 ELECTRONIC EQUIPMENT

D.4.1 VHF radios are allowed and encouraged for this event per the NOR. The use of all other electronic equipment on board is restricted by General Class Rule 16.3. It means the use of smartwatches, smartphones or any GPS device is not permitted while racing.

D.5 TWIST TOGGLES

D.5.1 Twist toggles, as outlined in General Class Rule 15.2, shall attach the shrouds to the anchor pins and shall not be removed.



Twist Toggle

D.6 TRAMPOLINES

D.6.1 Trampolines must be manufactured by Hobie Cat Company (General Class Rule 16.5).

D.7 COMPTIP MASTS

D.7.1 A COMPTIP mast is mandatory when racing the Hobie Cat 16 within the North American Region (General Class Rule 13.3 a)).

D.8 MINIMUM BOAT WEIGHT

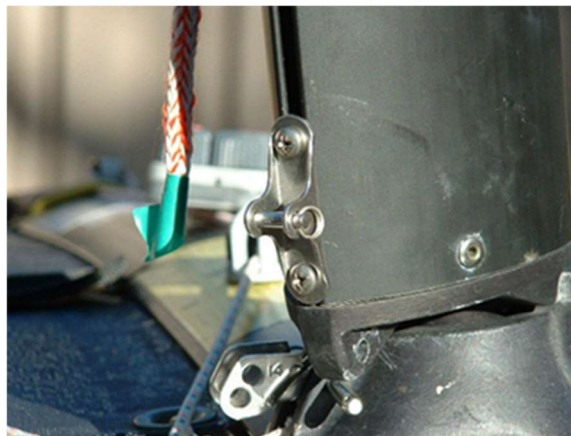
D.8.1 All boats will be weighed, with MASTS DOWN. Boats must be prepared per General Class Rule 19.1, and drained and dry for weighing. If used, VHF radios are considered “personal gear.” For the weighing of boats during registration bring any boat corrector weights if required to meet class minimum boat weight. Weights shall be attached per General Class Rule 19.2. The IHCA Rules Committee defines “weights” as dry solid, and “attached” as tied or taped to the boat.

D.9 MINIMUM COMBINED CREW WEIGHT

D.9.1 For the weighing of competitors during registration bring any crew corrector weights if required to meet class minimum crew weight. As required by General Class Rule 17.4 corrector weights shall be dry solid. Also see General Class Rule 17.5 and 17.6. The IHCA Rules Committee defines “attached” as tied or taped to the boat.

D.10 UPGRADED 6:1 DOWNHAUL SYSTEM

D.10.1 If using the upgraded 6:1 downhaul system, the lower end of system must connect directly to the custom HCC supplied mast track attachment fitting near the mast-base and the upper end to the gooseneck via a shackle/pin (HC16 Rule 6.1).



Custom HCC Supplied Mast Track Attachment Fitting

If you have any questions, please write rules@hobieclass.com
John Smith, Technical Committee Chair

Attachment E

General Information

(Not part of the NoR)

E.1 CAMPING

E.1.1 There is tent camping available at this venue. Prior approval from the Organizing Authority is required. Other local campgrounds can be found at the following link: <https://www.visitpensacola.com/places-to-stay/campgrounds-and-rv-parks/>

E.2 HOTELS

E.2.1 There are no hotels within walking distance of the venue.

E.2.2 Use any of the following accommodation search sites or others to find suitable lodging to fit your budget:
www.expedia.com – for hotels and apartments www.hometogo.com – this site searches all vacation rental sites
www.vrbo.com – vacation rental options www.airbnb.com - vacation rental options

E.3 NEAREST AIRPORT

E.3.1 Pensacola International Airport is the closest major airport and is located 7 miles from the venue.

E.4 PARKING

E.4.1. Parking is available on site next to the boat launch ramps and storage fields.

E.5 FACILITIES CONTACT

E.5.1 Contact Greg Spitzer – Pensacola YC Dockmaster, dockmaster@pycfl.com – to coordinate boats arrival and camping requirements.