



Buccaneer Blast Youth Regatta

February 1-2, 2025

Organizing Authority:
Mark Sorensen Youth Sailing Program
Rowell's Waterfront Park and Upper Keys Sailing Center
Key Largo, FL 33037

Sailing Instructions

1. RULES

- 1.1. The regatta will be governed by the rules as defined in *The Racing Rules of Sailing* (RRS), the Notice of Race, and these Sailing Instructions.
- 1.2. Only the US Prescriptions to RRS 63.1(b), 70.3(b), 81, and Appendix R and Appendix V shall apply. *This changes NoR 1(e).*

2. COMMUNICATIONS WITH COMPETITORS AND SUPPORT PERSONS

- 2.1. Notices to competitors will be posted on the Official Notice Board located at https://www.regattanetwork.com/event/28932#_newsroom.
- 2.2. On the water, the race committee intends to monitor and communicate with coaches and committee members via VHF radio on channel: Safety 69, Opti RWB 72, ILCA/420 74, Opti Green 80a

3. CHANGES TO SAILING INSTRUCTIONS

- 3.1. Any change to these SIs will be posted before 0900 on Saturday, February 1, and 0730 on Sunday, February 2 except that any change in the schedule of races will be posted by 2000 on the day before it will take effect.
- 3.2. RRS 90.2(c) will be used for on-the-water verbal changes to the SIs. While signaling with the "L" flag, the change will be given verbally to competitors as they sail behind the RC signal boat. The change will also be announced to coaches on the designated VHF channel.

4. SIGNALS MADE ASHORE

- 4.1. Signals made ashore will be displayed on the flag poles at UKSC or Rowell's Park depending on what course the signal applies.
- 4.2. When Flag AP is displayed ashore, "1 minute" is replaced with "not less than 30 minutes" in the Race Signal AP.

5. SCHEDULE OF RACES

5.1. Saturday, February 1

0730-0900	Onsite check-in is available at the park.
0930	Coaches Meeting: beach area facing basin for Optis at Rowell's Waterfront Park and for C420s at the flagpole at UKSC.
0945	Skippers' Meeting, beach area facing basin for Optis at Rowell's Waterfront Park and for C420s the flagpole at UKSC.
1030	First scheduled warning for ILCA/420, Opti RWB, and Windsurfers
1045	First scheduled warning for Opti Green.

1530	No warning signal for a race will be made after this time.
------	--

Sunday, February 2

0930	First warning signal for first race of the day for RWB, ILCA/420, and Windsurfer
1000	First warning signal for first race of the day for Opti Green.
1400	No warning signal for a race will be made after this time

5.2. For RWB, ILCA, and 420, the race committee intends to run no more than nine (9) races. Total races for Opti Green will be at the discretion of the Race Officer.

5.3. To alert boats that a race or sequence of races will begin soon, the orange starting line flag will be displayed with multiple sounds at least one minute before a warning signal.

6. RACING AREA

6.1. The racing area for Opti RWB and Opti Green will be on Blackwater Sound as shown in Addendum 1.

6.2. The racing area for ILCA/420/Windsurfer will be on Buttonwood Sound as shown in Addendum 1.

7. CLASS FLAGS

7.1. 420 class flag will be a white flag with a blue 420 insignia.

7.2. ILCA class flag will be a yellow flag with red ILCA insignia.

7.3. Opti RWB will be a solid red flag.

7.4. Opti Green will be a solid green flag with a white Opti insignia.

8. MARKS AND COURSES

8.1.

	Opti RWB	Opti Green	ILCA and 420
Rounding Marks	Yellow	Orange	Yellow
Start Pin End	Powerboat w/ orange flag	Powerboat w/ orange flag	Orange
Finish Pin End	Powerboat w /blue flag	Powerboat w/ blue flag	Orange
Signal Boat and Finish Boat	Start – blue sailboat “Lunasea” Finish – Tidewater 21	Pontoon boat	UKSC Pontoon boat

8.2. See course diagrams in Addendum 2.

9. THE START

9.1. Races will be started by using RRS 26.

9.2. The starting line will be between a staff displaying an orange flag on the race committee signal vessel and the course side of the starting mark as described in SI 8.1

9.3. The race committee will not hail the sail numbers of boats that are OCS or subject to starting penalties under RRS 29.1 or 30.

9.4. The race committee may broadcast the sail numbers of boats penalized for starting penalties on the course VHF channel only after all boats have started.

9.5. A boat shall not start later than four (4) minutes after her starting signal. Any boat that does so will be scored DNS without a hearing. *This changes RRS A5.1 and A5.2.*

10. CHANGE OF THE NEXT LEG OF THE COURSE

10.1. To change the next leg of the course, the race committee will lay a new mark (or move the finishing line) and remove the original mark as soon as practicable. When in a subsequent change a new mark is replaced, it will be replaced by an original mark.

10.2. Change marks on the Opti RWB and ILCA/420 courses will be orange. Change marks on the Opti Green course will be yellow.

11. THE FINISH

The finishing line will be between a staff displaying a blue flag on the race committee finishing vessel and the course side of a finishing mark or a staff displaying a blue flag on a second finishing vessel.

12. TIME LIMITS

12.1. The time limit for the first boat in each class to finish a race will be 45 minutes for Opti Green and 60 minutes for RWB, ILCA, and 420. If the time limit has elapsed, the race will be abandoned.

12.2. The Finishing Window shall be 20 minutes after the first boat sails the course and finishes.

12.3. Boats failing to finish within the Finishing Window shall be scored Did Not Finish without a hearing. *This changes RRS 35, A5.1, and A5.2.*

13. PROTESTS AND REQUESTS FOR REDRESS

13.1 Hearing request forms are available at the check-in desk. Protests and requests for redress or reopening shall be delivered there within the appropriate time limit.

13.2 For each class, the protest time limit is 60 minutes after the last boat has finished the last race of the day or the race committee signals no more racing today, whichever is later.

13.3 Notices will be posted no later than 30 minutes after the protest time limit to inform competitors of hearings in which they are parties or named as witnesses and where the hearings will be held.

13.4 Notices of protests by the race committee, technical committee or protest committee will be posted to inform boats under RRS 60.2(d).

14. SCORING

14.1. One (1) race must be completed to constitute a regatta for each class except windsurf where three (3) races are required.

14.2. For all classes except Windsurfer, the worst score will be excluded with the completion of five (5) races. For Windsurfer, there will be one (1) discard for every four (4) races sailed. *This changes RRS A2.1.*

14.3. RRS A5.3 will apply.

15. SAFETY REGULATIONS

15.1. The Beach Master is a member of the race committee. A Beach Master will be stationed at the launching area of each class. Boats not competing shall inform the Beach Master no later than 30 minutes before the first warning. The Beach Master will then notify the course Race Officer.

15.2. Before leaving shore, each competitor shall check out with safety personnel located at the launch ramps. Sailors must check in immediately when returning to shore, no later than 30 minutes after the finish boat docks. It is the responsibility of the sailor to visibly confirm their sail number or name when checking in/out with the safety personnel.

15.3. [DP] A competitor who fails to comply with SI 15.2 may receive a 20% scoring penalty for the first violation without a hearing and a 40% scoring penalty for the second violation without a hearing. Penalties will be calculated as stated in RRS 44.3(c) and will be applied to the last race sailed that day. Additional violations are subject to protest by the race committee and, following a hearing, a penalty may include disqualification. *This changes RRS 63.1.*

15.4. A boat retiring from a race or leaving the course shall notify the race committee or, when that is impossible, the Beach Master immediately after arrival ashore.

15.5. RRS 40.1 shall apply at all times while competitors are on the water.

16. OFFICIAL VESSELS

Identified as follows:

Race Committee Vessels	Blue or yellow flag with RC insignia
Coach Boats	Yellow numbered flags
Spectator Boats	Teal/green numbered flags
Safety Boats	Orange flags with S

17. [DP] SUPPORT TEAMS

- 17.1. Support boats with spectators, team leaders, coaches, and other support persons must register with the Organizing Authority per the Notice of Race and display the provided ID flag.
- 17.2. For RWB, ILCA, and 420, no spectator or coach boats are allowed at either end of the starting line during a start sequence and must remain at least 100 yards outside the course during races.
- 17.3. For Opti Green, no spectator boats are allowed at either end of the starting line during a start sequence and must remain at least 100 yards outside the course during races. Coach boats on the Green course are encouraged to coach all sailors on the course after the start. Coaches and spectators must stay 100 yards clear of the finish area.
- 17.4. All support boats on the course must be registered and flying appropriate flags.

18. TRASH DISPOSAL

Trash may be placed aboard support or official boats.

19. RISK STATEMENT

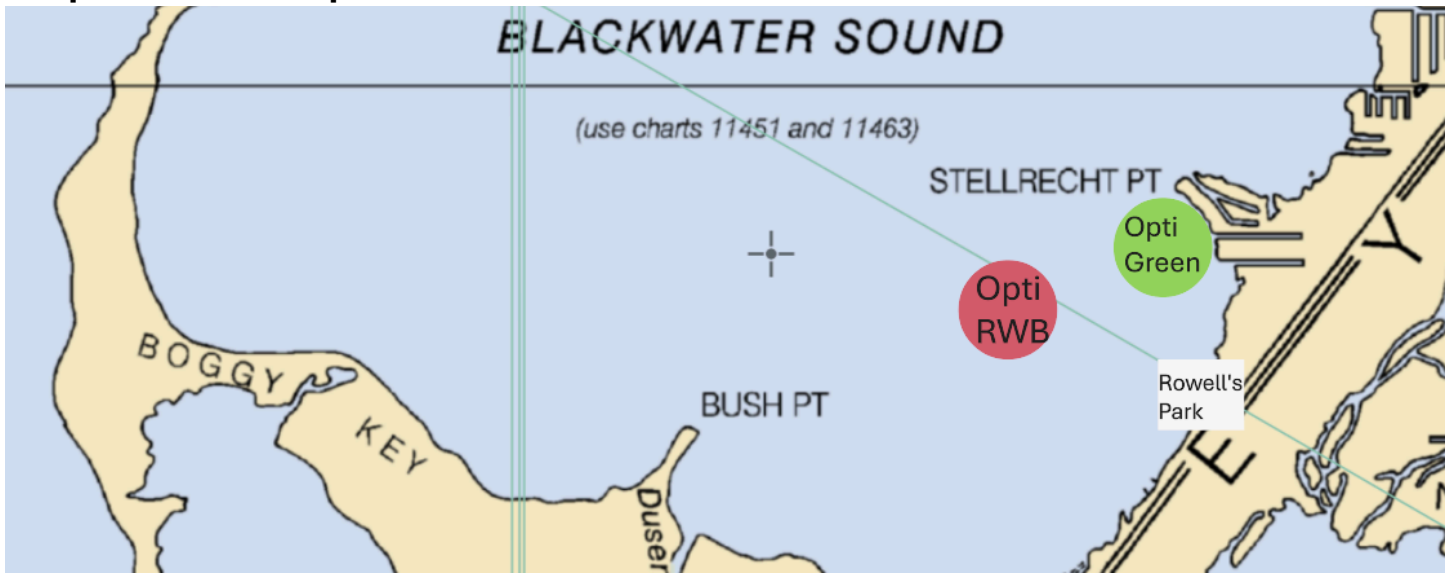
RRS 3 states: 'The responsibility for a boat's decision to participate in a race or to continue to race is hers alone.' By participating in this event each competitor agrees and acknowledges that sailing is a potentially dangerous activity with inherent risks. These risks include strong winds and rough seas, sudden changes in weather, failure of equipment, boat handling errors, poor seamanship by other boats, loss of balance on an unstable platform, and fatigue resulting in increased risk of injury. Inherent in the sport of sailing is the risk of permanent, catastrophic injury or death by drowning, trauma, hypothermia, or other causes.

20. CONTACT INFORMATION

- 20.1. Opti RWB PRO: Mike Austin (330) 351-0340
- 20.2. Opti Green PRO: Jay Austin (330) 351-0283
- 20.3. 420/ILCA PRO: Jeremy Pape (770) 540-5860

Addendum 1 – Racing Circles

Opti RWB and Opti Green



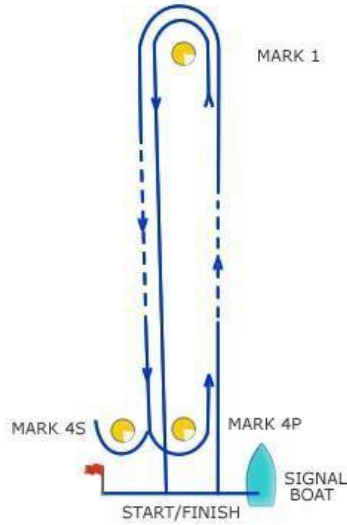
ILCA/420



Addendum 2 – Course Diagrams

ILCA/420

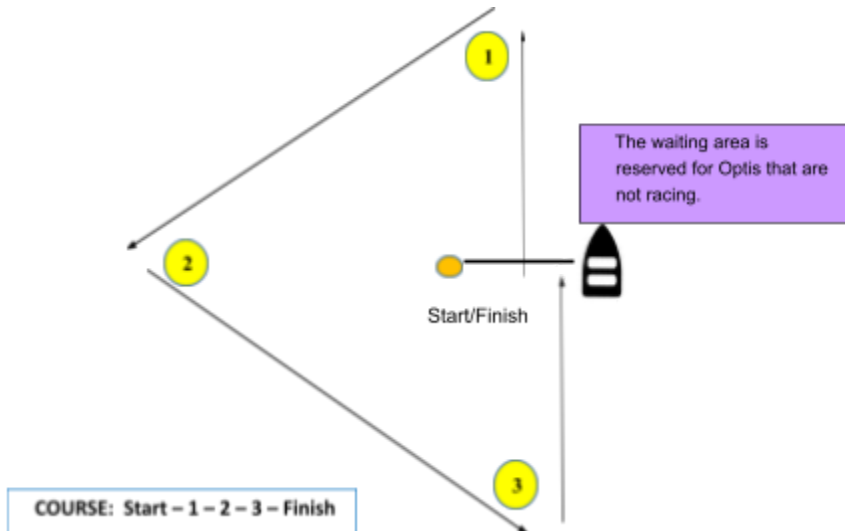
Windward Leeward Course



Course 1: Start – 1 – 4P/S – 1 – Finish

Course 2: Start – 1 – 4P/S – 1 – 4P/S – 1 - Finish

Optimist Green Fleet



Opti RWB

