



PCYC Women's+ Invitational
Hosted by:
Pass Christian Yacht Club
March 22nd-23rd, 2025
Posted: 03/21/2025
SAILING INSTRUCTIONS (SIs)



The notation [DP] means that the penalty for breaking this provision will be a discretionary penalty, which may be less than disqualification. The notation [NP] in a rule of the sailing instructions means that a boat may not protest another boat for breaking that rule. This changes RRS 60.1.

1 RULES

- 1.1** The event is governed by the rules as defined in The Racing Rules of Sailing and the Melges 15 Class Rules.
- 1.2** The Organizing Authority (OA) is the Pass Christian Yacht Club (PCYC).
- 1.3** The following US Sailing Prescriptions will apply: the Preamble to RRS Part 5, RRS 63.1, 65.1, and Appendix R. These are attached as Addendum A in the Notice of Race.

2 CHANGES TO SAILING INSTRUCTIONS

- 2.1** Any change to the sailing instructions will be posted before 0900 on the day it will take effect, except that any change to the schedule of races will be posted by 2000 on the day before it will take effect.
- 2.2** In accordance with RRS 90.2 (c), oral changes to the Sailing Instructions may be made on the water. A change is in effect when the RC signal boat displays Flag L over A with one sound signal. This means "come within hail of the RC boat" to receive the oral changes to the Sailing Instructions. The Race Committee will monitor and may advise the fleet via VHF Channel 68.

3 COMMUNICATIONS WITH COMPETITORS

- 3.1** Notices to competitors will be posted on the official notice board located at <https://www.regattanetwork.com/event/28967>.
- 3.2** For information, please contact Principal Race Officer, Samson Vasquez, telephone 228-596-7686, email sam@passchristianyachtclub.org.
- 3.3** On the water, the race committee intends to monitor and communicate with competitors via VHF radio on channel 68.

4 CODE OF CONDUCT

- 4.1** [DP] Competitors and support persons shall comply with reasonable requests from race officials.

5 SIGNALS MADE ASHORE

- 5.1** Signals made ashore will be displayed on the flag pole located on the Southlawn of PCYC.
- 5.2** Flag "L", when displayed ashore signifies that a change in SIs or other notice to competitors has been posted on the official notice boards.
- 5.3** When flag AP is displayed ashore, '1 minute' is replaced with 'not less than 30 minutes' in Race Signals AP.

6 SCHEDULE OF RACES

- 6.1** 8 races are scheduled, 4 per day.
- 6.2** The scheduled time of the warning signal for the first race each day is 12:30am on Saturday and at 11:00am on Sunday.
- 6.3** To alert boats that a race or sequence of races will begin soon, the orange starting line flag will be displayed with one sound at least five minutes before a warning signal is made.
- 6.4** On the last scheduled day of racing no warning signal will be made after 3:30pm.

7 CLASS FLAGS

- 7.1** The Melges 15 Class flag will be a green flag.

8 RACING AREA

- 8.1** The racing area is .75 NM South-southeast of the PCYC pier.

9 COURSES

- 9.1** The course to be sailed will be a windward-leeward twice around using inflatable marks.
- 9.2** The diagram in SI Addendum A shows the courses, including the approximate angles between legs, the order in which marks are to be passed, and the side on which each mark is to be left.
- 9.2** No later than the warning signal, the race committee signal vessel will display the course to be sailed, the distance, and compass bearing of the first leg.

10 MARKS

- 10.1** Mark 1 will be an orange tetrahedron. Mark 1a (offset) will be an orange ball. Mark 2/Start Mark will be a green tetrahedron.
- 10.2** All rounding marks shall be left to port.
- 10.3** New marks, as provided in SI 13, are yellow tetrahedrons.

11 THE START

- 11.1** Races will be started using RRS 26 with the warning signal made 5 minutes before the starting signal.
- 11.3** The starting line is between a staff displaying an orange flag on the signal vessel and the Start Mark.
- 11.4** Boats whose warning signal has not been made shall avoid the starting area during the starting sequence for other races.
- 11.5** [NP] If any part of a boat's hull is on the course side of the starting line during the two minutes before her starting signal and she is identified, the race committee will attempt to broadcast her sail number on VHF channel 68. Failure to make a broadcast or to time it accurately will not be grounds for a request for redress. This changes RRS 62.1(a).
- 11.6** If any part of a boat's hull is on the course side of the starting line at her starting signal and she is identified, the race committee will attempt to hail her sail number. Failure to hail her number, failure of her to hear such a hail, or the order in which boats are hailed will not be grounds for a request for redress. This changes RRS 62.1(a).
- 11.7** A boat that does not start within 4 minutes after her starting signal will be scored Did Not Start without a hearing. This changes RRS A5.1 and A5.2.

12 CHANGE OF THE NEXT LEG OF THE COURSE

- 12.1** The RC may make minor adjustments (up to 10 degrees and .1NM in length) to the course during a race without signalling a course change. This changes RRS 33.
- 12.2** For a change the next leg of the course, the race committee will lay a new mark (or move the finishing line) and remove the original mark as soon as practicable. When in a subsequent change a new mark is replaced, it will be replaced by an original mark. This changes RRS 33.

13 THE FINISH

- 13.1** The finishing line is between a staff displaying a blue flag on the signal boat and the small orange tetrahedron.
- 13.2** If the race committee is absent when a boat finishes, she shall report her finishing time and her position in relation to nearby boats, to the race committee at the first reasonable opportunity.

14 PENALTY SYSTEM

- 14.1** Appendix V, 'Alternative Penalties,' both V1 and V2 shall apply. This changes RRS 44.1.

15 TIME LIMITS [AND TARGET TIMES]

- 15.1** The Mark 1 Time Limit, Race Time Limit (see RRS 35), and the Finishing Window are shown in the table below.

Mark 1 Time Limit	Race Time Limit	Finishing Window
30 minutes	90 minutes	20 minutes

15.2 If no boat has passed the first mark within the Mark 1 Time Limit, the race will be abandoned.

15.3 The Finishing Window is the time for boats to finish after the first boat sails the course and finishes. Boats failing to finish within the Finishing Window, and not subsequently retiring, penalized or given redress, will be scored Time Limit Expired (TLE) without a hearing. A boat scored TLE shall be scored points for the finishing place two more than the points scored by the last boat that finished within the Finishing Window. This changes RRS 35, A5.1, A5.2 and A10.

15.4 Failure to meet the Target Time will not be grounds for redress. This changes RRS 62.1(a).

16 HEARING REQUESTS

16.1 The protest time limit is 60 minutes after the last boat in that class finishes the last race of the day or the race committee signals no more racing today, whichever is later. The time will be posted on the official notice board.

16.2 Hearing request forms are available at the PCYC Office.

16.3 Notices will be posted no later than 30 minutes after the protest time limit to inform competitors of hearings in which they are parties or named as witnesses. Hearings will be held in the PCYC Board Room.

17 SCORING

17.1 The scoring system is the Low Point System in RRS Appendix A.

17.2 1 race is required to be completed to constitute a series.

17.3 When five (5) or more races have been completed, a boat's series score will be the total of her race scores excluding her worst score. This changes RRS A2.

17.4 Rule A5.3 applies.

18 SAFETY REGULATIONS

18.1 [DP] A boat that retires from a race shall notify the race committee at the first reasonable opportunity.

18.2 [DP] Competitors shall check in with the Race Committee (RC) before the first race of the day, competitors must sail past the stern of the RC boat on starboard tack and hail their sail number.

19 REPLACEMENT OF CREW OR EQUIPMENT

19.1 [DP] Substitution of competitors is allowed without prior written approval. Sailors may swap between boats and the skipper and crew roles.

20 OFFICIAL VESSELS

20.1 Official vessels will be identified with blue and yellow RC flags.

21 [DP] SUPPORT TEAMS

21.2 Team leaders, coaches and other support persons shall stay outside areas where boats are racing from the time of the preparatory signal for the first start until all boats have finished or retired or the race committee signals a postponement, general recall or abandonment.

22 TRASH DISPOSAL

22.1 Trash may be placed aboard any official vessels.

23 PRIZES

23.1 Prizes will be given to the top three positions in each class.

24 RISK STATEMENT

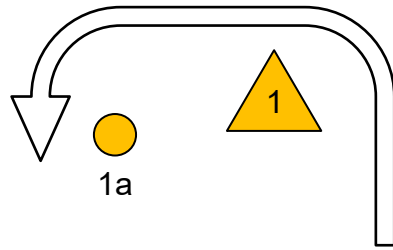
24.1 RRS 3 states: 'The responsibility for a boat's decision to participate in a race or to continue to race is hers alone.' By participating in this event each competitor agrees and acknowledges that sailing is a potentially dangerous activity with inherent risks. These risks include strong winds and rough seas, sudden changes in weather, failure of equipment, boat handling errors, poor seamanship by other boats, loss of balance on an unstable platform and fatigue resulting in increased risk of injury.

Inherent in the sport of sailing is the risk of permanent, catastrophic injury or death by drowning, trauma, hypothermia or other causes.

24 INSURANCE

24.1 Each participating boat shall be insured with valid third-party liability insurance.

SI Addendum A



Windward Leeward Twice Around

START - 1 - 1a - 2 - 1 - 1a - FINISH

