

Snowbird Regatta

PHRF Monohull

- VHF Ch 78
- 1st Warning 13:00 at 'I', 1st boat starts at 13:05
- Target time: 2 hrs, TLE after 4 hrs
- High Tide: 15:42 1.27ft

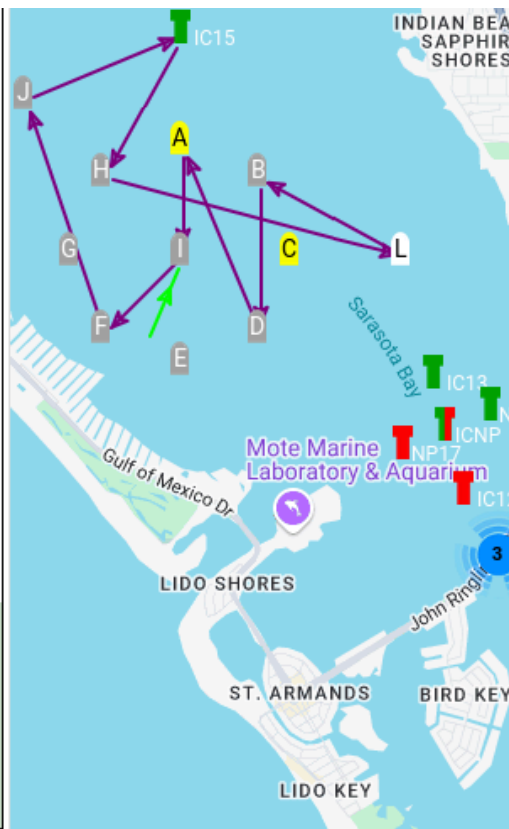
Pursuit Start Sheet For Sarasota Sailing Squadron Snowbird Regatta

Start Time: Distance: MAX PHRF:
 Limit To Division:

Date: _____

| Start | Sail# | Skipper | Boat Name | Class/Fleet | PHRF |
|----------|-------|--------------------|-----------------|---------------|------|
| 13:05:00 | 4084 | Alice Hawrilenko | Lapwing | PHRF Monohull | 313 |
| 13:17:07 | NA | Dennis Savaiano | Journey | PHRF Monohull | 231 |
| 13:20:04 | 127 | Michael Halliday | Runaway | PHRF Monohull | 211 |
| 13:22:00 | 43 | Christopher Palmer | Green with Envy | PHRF Monohull | 198 |
| 13:29:41 | 122 | Marvin Quin | Quinessential | PHRF Monohull | 146 |

| | |
|-------------------|-------|
| I | Start |
| F _s | 0.60 |
| J _s | 1.34 |
| IC15 _s | 0.92 |
| H | 0.89 |
| L | 1.68 |
| B | 0.88 |
| D _s | 0.85 |
| A | 1.11 |
| I | 0.60 |



wind 203° at 9.5 kts
 Distance: 8.87 nm
 Duration: 01:44-02:23 , 01:14-01:51
 Wind Forecast by [OpenWeatherMap](#)
 Course Builder v5.20 by [Mike Halliday](#)

Mark Information at :

<https://sarabayracing.com/racing-tools/navigation-data-coordinates/>

Snowbird Regatta

PHRF Monohull