

# 2025 HYC Midwinter Regatta

February 15, 2025

## Houston Yacht Club

3620 Miramar Drive, Shoreacres, TX 77571

(281) 471-1255



## SAILING INSTRUCTIONS

The notation '[NP]' in a rule means that a boat may not protest another boat for breaking that rule. This changes RRS 60.1.

### 1. RULES

- 1.1 The regatta shall be governed by the rules as defined in the *Racing Rules of Sailing*.
- 1.2 *The US Sailing Prescriptions* shall apply.

### 2. CHANGES TO SAILING INSTRUCTIONS

- 2.1 Any change to the sailing instructions will be posted before 0900 on the day it will take effect, except that any change to the schedule of races will be posted by 2000 on the day before it will take effect.
- 2.2 Changes to a sailing instruction may be made on the water by the display of the L Flag on the Signal Boat and displayed on a notice board located on the stern of the Signal Boat in accordance with RRS 90.2(c). Each competitor will sail past the Signal Boat on starboard tack and acknowledge the change.

### 3. COMMUNICATIONS WITH COMPETITORS

- 3.1 Notices to competitors will be posted on the official notice board located in the breezeway adjacent to the HYC Office.
- 3.2 On the water, the race committee intends to communicate with competitors on VHF Channel 69.
- 3.3 [DP] While racing, except in an emergency, a boat shall not make voice or data transmissions and shall not receive voice or data communication that is not available to all boats.

### 4. SIGNALS MADE ASHORE

- 4.1 Signals made ashore will be displayed from the flagpole at Houston Yacht Club.
- 4.2 When flag AP is displayed ashore, '1 minute' is replaced with 'not less than 60 minutes' in Race Signals AP.

### 5. SCHEDULE OF RACES

- 5.1 In the event that inclement weather prevents racing on Saturday, February 15, racing will be rescheduled to Sunday, February 16. The schedule for Sunday will follow the same timings as originally planned for Saturday.
- 5.2 The intended schedule is as follows:

#### **Thursday, Feb. 13**

- |      |   |
|------|---|
| 1900 | RC to Post racing day Saturday, Feb 15 or Sunday, Feb 16. Notice will be posted on the Official Notice Board and Regatta Network. |
|------|---|

# SAILING INSTRUCTIONS

## Saturday, Feb. 15

0915	Competitor's Briefing, all lines, at the Beachcomber.
1100	First Warning Signal, all race courses.
Post Race	Clam Chowder & Gumbo for competitors at the Beachcomber. Beverages available for purchase. Non-members will need to present an HYC Guest Card for purchases. Club Dining & Buffet is also available to all visitors with guest card. Guest cards may be obtained at the HYC Front Office.
TBA	Awards presentation, post racing.

- 5.3 No warning signal will be made after 1530 hrs on any race day.
- 5.4 Flag "A" (ALPHA) displayed with no sound while boats are finishing means "no more racing today".

## 6. CLASS FLAGS

Class flags and order of starts are defined in the Addendum: *Class Flags and Order of Starts*.

## 7. RACING AREA

All races will be sailed on Upper Galveston Bay in the areas bound by the *Houston Ship Channel* to the East and the *Bayport Ship Channel* to the South, in the vicinity of the Houston Yacht Club. See *Addendum: Racing Area*.

## 8. [NP] CHECK IN

- 8.1 Prior to the warning for the first race of each day, each boat shall check-in. Check-in means passing on starboard tack, close astern of the Race Committee Signal Boat and hailing her sail number until being recognized by the Race Committee.
- 8.2 Boats failing to check-in shall receive a 20% scoring penalty in the first race of the day, without a hearing, calculated as specified in accordance with RRS 44.3 (c). This modifies RRS 63.1 and A5.

## 9. COURSES

- 9.1 The course diagrams are shown in the Addendum: *Course Diagrams* and show the courses, the order in which the marks are to be passed, and the side on which each mark is to be left.
- 9.2 No later than the warning signal, the race committee will designate the course and the approximate compass bearing of the first leg on the course board.
- 9.3 At the gate, if only one mark is present it shall be rounded leaving it to port. This changes RRS 34.

## 10. MARKS

- 10.1 Mark 1, 2, 2S, and 2P are yellow tetrahedrons. Offsets are marks or floating shapes.
- 10.2 For Dinghy classes, mark 1 is a green tetrahedron to create a shorter course. There will be no offset.

## 11. OBSTRUCTIONS

Boats shall not enter any Ship Channel while racing. Ship Channels are designated as obstructions.

## 12. THE START

- 12.1 Races will be started using RRS 26.
- 12.2 The starting line will be between a staff displaying an orange flag from the signal boat on the starboard end and a mark or floating shape at the port end.
- 12.3 Boats whose warning signal has not been made shall avoid the starting area during the starting sequence for other boats.
- 12.4 If any part of a boat's hull is on the course side of the starting line at her starting signal and she is identified, the race committee will attempt to hail her sail number. Failure to hail her number,

## SAILING INSTRUCTIONS

failure of her to hear such a hail, or the order in which boats are hailed will not be grounds for a request for redress. This changes RRS 61.4(b)(1).

- 12.5 A boat that does not start within 4 minutes after her starting signal will be scored Did Not Start without a hearing. This changes RRS 35 and A5.1.

### 13. CHANGE OF THE NEXT LEG OF THE COURSE

- 13.1 The change marks are orange tetrahedrons. Change Mark 1 will not have an offset.
- 13.2 To change the next leg of the course, the Race Committee will lay a new mark and remove the original mark as soon as practicable. When in a subsequent change a new mark is replaced, it will be replaced by an original mark.

### 14. THE FINISH

The Finish Line will be between a staff displaying a blue flag on the Race Committee boat and a nearby floating shape.

### 15. PENALTY SYSTEM

RRS Appendix V1 & V2 are in effect.

### 16. TIME LIMITS AND TARGET TIMES

- 16.1 The Mark 1 Time Limit, Race Time Limit (see RRS 35), and the Finishing Window are shown in the table below.

Class	Mark 1 Time Limit	Finishing Window
One-Design (all)	40 minutes	20 minutes
PHRF	40 minutes	40 minutes

- 16.2 If no boat in a class has passed the first mark within the Mark 1 Time Limit, the race shall be abandoned for that class.
- 16.3 The Finishing Window is the time for boats to finish after the first boat in a class sails the course and finishes. Boats failing to finish within the Finishing Window, and not subsequently retiring, penalized, or given redress, shall be scored DNF.
- 16.4 RRS A5.3 is in effect.

### 17. HEARING REQUESTS

- 17.1 Intent to protest shall be signaled in accordance with RRS 60.2. The protesting boat shall also notify the Race Committee of the intention to protest at the first reasonable opportunity after the end of the race in which the protested incident occurred by and be acknowledged before leaving the finish area. If this instruction is not followed, the protest will be found to be invalid. This changes RRS 61.4(b)(1).
- 17.2 Protests shall be written on forms available at the office of the Houston Yacht Club and delivered there within forty-five (45) minutes following the arrival in the harbor of the Race Committee boat for the racing line involved. This time will be posted on the "HYC Race Information" official notice board. This changes RRS Appendix S13.2.
- 17.3 The times and locations of the protest hearings, along with the names of the boats involved will be posted on the "HYC Race Information" official notice board at the entrance to the breezeway adjacent to the offices of The Houston Yacht Club no later than thirty (30) minutes after the protest time period.
- 17.4 For the purpose of meeting obligations under US Sailing prescriptions concerning redress, notification of a redress hearing shall be by posting on the official notice board for thirty (30) minutes. The requirement for written requests for attendance of the hearing will be satisfied by a

## SAILING INSTRUCTIONS

signup sheet at the official protest table. No more than one person per boat may attend. No request for reopening a hearing will be accepted later than 30 minutes after a protest committee decision has been posted on the "HYC Race Information" official notice board. This changes RRS 61.2.

- 17.5 As a courtesy, the Protest Committee will attempt to notify the parties to a protest hearing or a redress hearing by telephone at the telephone number provided online on Regatta Network upon registration.
- 17.6 Competitors who intend to protest are required to bring their own device for electronic communication in a hearing. Some of the judges are only accessible through Zoom.

### 18. SCORING

- 18.1 The scoring system is in accordance with Appendix A of the RRS.
- 18.2 One (1) race is required to be completed to constitute a regatta.
- 18.3 No score will be excluded from a boat's regatta score, this modifies RRS A2.1.

### 19. SAFETY REGULATIONS

- 19.1 [DP] A boat that retires from a race shall notify the race committee on Channel 69 on the water, or, if that is not possible, The Houston Yacht Club office by telephone: **281-471-1255**. Failure to comply with this requirement may result in disqualification from this regatta.
- 19.2 **DISCLAIMER OF LIABILITY:** Competitors participate in this regatta entirely at their own risk. See RRS 3, Decision to Race.

### 20. RISK STATEMENT

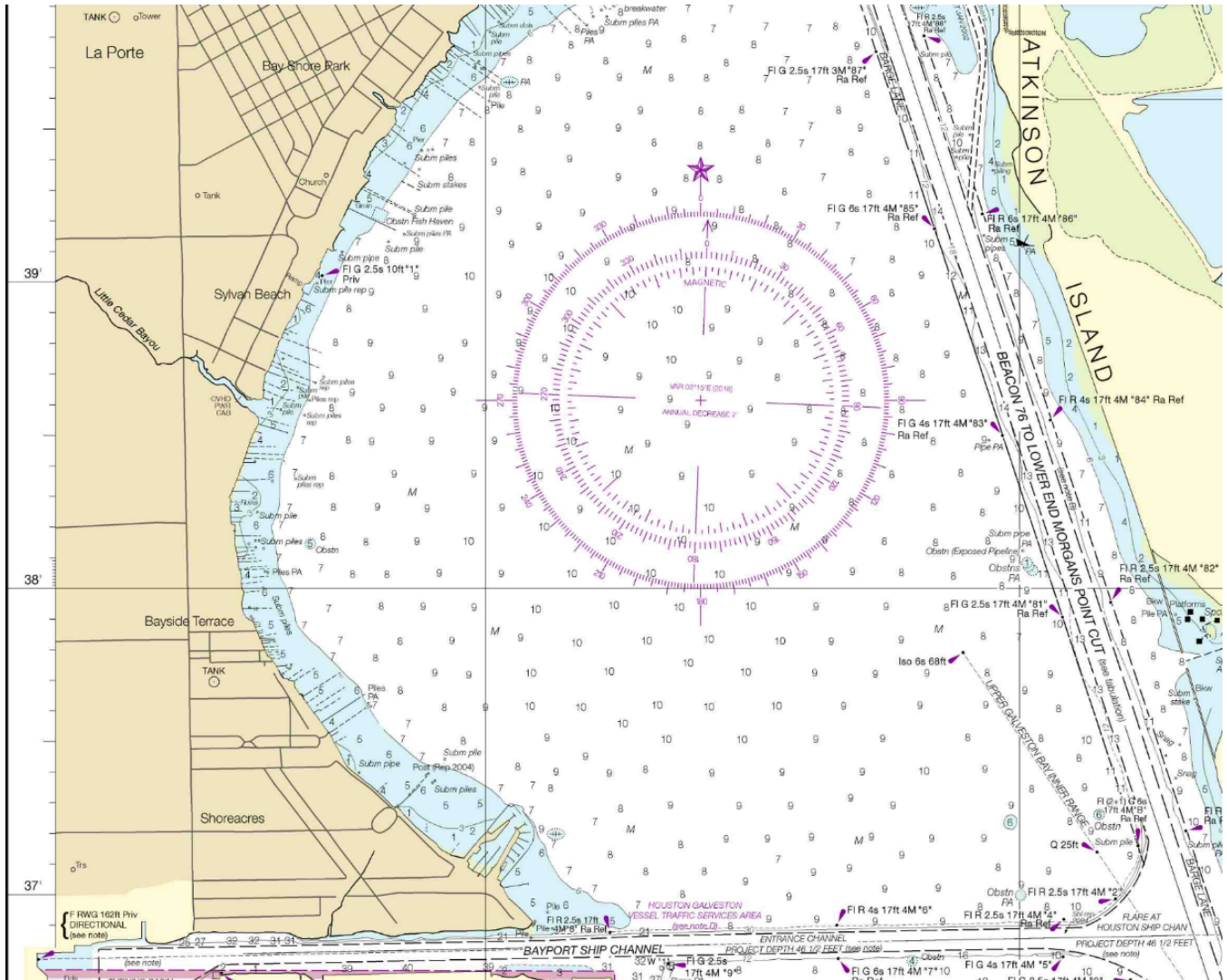
- 20.1 RRS 3 states: "The responsibility for a boat's decision to participate in a race or to continue *racing* is hers alone." By participating in this event each competitor agrees and acknowledges that sailing is a potentially dangerous activity with inherent risks. These risks include strong winds and rough seas, sudden changes in weather, failure of equipment, boat handling errors, poor seamanship by other boats, loss of balance on an unstable platform and fatigue resulting in increased risk of injury. **Inherent in the sport of sailing is the risk of permanent, catastrophic injury or death by drowning, trauma, hypothermia, or other causes.**
- 20.2 The organizing authority will not accept any liability for material damage or personal injury, or death sustained in conjunction with or prior to, during, or after the regatta.

### 21. FURTHER INFORMATION

For further information, or to contact club operations, please feel free to reach out to:  
Park Tupper, Event Chair, [park.tupper@gmail.com](mailto:park.tupper@gmail.com)  
Megan Larson, Principal Race Officer, [megan.larson.hyc@gmail.com](mailto:megan.larson.hyc@gmail.com)

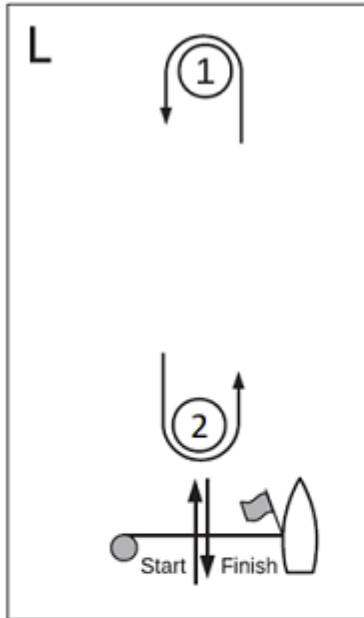
# SAILING INSTRUCTIONS

## ADDENDUM: RACING AREA

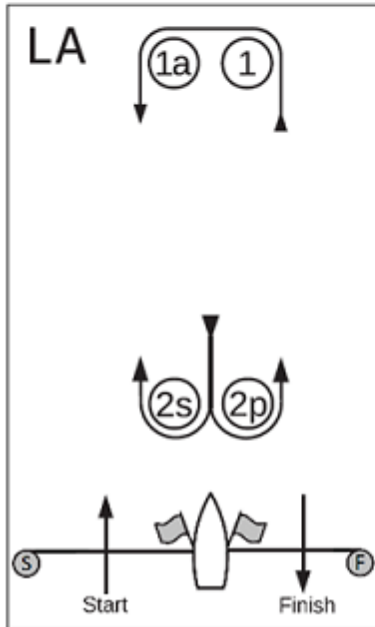


# SAILING INSTRUCTIONS

## ADDENDUM: COURSE DIAGRAMS



Course L – Windward/Leeward, Leeward Finish	
Signal	Mark Rounding Order
L2	Start - 1 - 2 - 1 - Finish
L3	Start - 1 - 2 - 1 - 2 - 1 - Finish
L4	Start - 1 - 2 - 1 - 2 - 1 - 2 - 1 - Finish



Course LA – Windward/Leeward with Offset Mark, Leeward Finish	
Signal	Mark Rounding Order
LA2	Start - 1 - 1a - 2s/2p - 1 - 1a - Finish
LA3	Start - 1 - 1a - 2s/2p - 1 - 1a - 2s/2p - 1 - 1a - Finish
LA4	Start - 1 - 1a - 2s/2p - 1 - 1a - 2s/2p - 1 - 1a - 2s/2p - 1 - 1a - Finish

# SAILING INSTRUCTIONS

## ADDENDUM: CLASS FLAGS and ORDER of STARTS

### Class Flags & Starting Order for FIRST RACE

#### **CLASS**

PHRF Non-Spin

PHRF Spin

J/24

Ensigns

#### **FLAG**

Maroon

Gray Flag

J/24 Class Flag

Ensign Class Flag