



## 2025 GBCA Charge! Cup

March 29, 2025

Organizing Authority: Galveston Bay Cruising Association  
Clear Lake Shores, TX USA

### SAILING INSTRUCTIONS

#### 1 RULES

- 1.1 The event is governed by the *rules* as defined in *The Racing Rules of Sailing (2025-2028) (RRS)*.
- 1.2 The notation “[DP]” in a rule in these Sailing Instructions means that the penalty for a breach of a rule may, at the discretion of the protest committee, be less than disqualification.

#### 2 CHANGES TO SAILING INSTRUCTIONS

- 2.1 Any change to the sailing instructions will be posted before 08:00 on the day it will take effect, except that any change to the schedule of races will be posted by 20:00 on the day before it will take effect.
- 2.2 Changes to a sailing instruction may be made on the water by contacting the specific class(s) affected by VHF notifying of the change.

#### 3 COMMUNICATIONS WITH COMPETITORS

- 3.1 3.1 Notices to competitors will be posted on the Regatta Network event Notice Board;  
[http://www.regattanetwork.com/clubmgmt/applet\\_notice\\_board.php?regatta\\_id=29208](http://www.regattanetwork.com/clubmgmt/applet_notice_board.php?regatta_id=29208)
- 3.2 On the water, the race committee intends to monitor and communicate with competitors on VHF radio channel 69.
- 3.3 The following communications may be made by the race committee on VHF.
  - Race Course to be sailed
  - General Race Committee intentions
- 3.4 Boats are encouraged to monitor VHF radio channel 13, “Bridge to Bridge”, while in proximity to the Bayport channel to remain aware of potential commercial traffic.
- 3.5 [DP] While racing, except in an emergency, a boat shall not make voice or data transmissions and shall not receive voice or data communication that are not available to all boats.

3.6 The use of a tracking program (like RaceQs or Yellowbrick) may be used for post-race evaluation only.

## 4 CODE OF CONDUCT

4.1 [DP] Competitors and support persons shall comply with reasonable requests from race officials.

4.2 [DP] Competitors and support persons shall handle any equipment provided by the organizing authority with care, seamanship, in accordance with any instructions for its use and without interfering with its functionality.

## 5 SIGNALS MADE ASHORE

5.1 Signals made ashore will be displayed via the Regatta Network event Notice Board;

[http://www.regattanetwork.com/clubmgmt/applet\\_notice\\_board.php?regatta\\_id=29208](http://www.regattanetwork.com/clubmgmt/applet_notice_board.php?regatta_id=29208)

5.2 In the event of signals made ashore, the Race Committee *may* also notify participants via SMS text message to the number provided at registration.

## 6 SCHEDULE OF RACES

### 6.1 Schedule

Date	Time	Event
Friday, March 28 <sup>th</sup>	19:00	Competitors briefing, GBCA Clubhouse. (Online link to also be provided)
Saturday, March 29 <sup>th</sup>	11:00	First Warning signal
Saturday, March 29 <sup>th</sup>	Est 19:00	Immediately following racing, social and awards at the GBCA clubhouse

6.2 To alert boats that a race or sequence of races will begin soon, the orange starting line flag will be displayed with one sound at least five minutes before a warning signal is made.

## 7 CLASS FLAGS

7.1 The class flags are as follows:

SCHRS /Multi-hull	Red
ORC Spin/J-105s	Purple
Cruising Club Spin	Pink
PHRF Non-Spin	Green

## 8 RACING AREA

- 8.1 SI Addendum #1 shows the location of the racing area.

## 9 COURSES

- 9.1 No later than the warning signal, the race committee will designate the course, and it may also display the approximate compass bearing of the first leg.
- 9.2 The diagram(s) in SI Addendum #2 show(s) the course(s), including the approximate bearings, the order in which marks are to be passed, approximate distance, and the side on which each mark is to be left. The addendum may include additional courses.

## 10 MARKS

- 10.1 The following Marks are Orange Tetrahedrons.
- Start/Finish (approx.)- .25 SSE of CL Marker #1 – (Est) 29° 32.696'N 94° 59.414'W
  - “CC Tet” – (Est.) 29° 39.303'N 94° 59.398'W
- 10.2 The following fixed marks may be used:
- South Boat Cut - #8 - 29° 32.417'N 94° 55.080'W
  - HYC Judges Stand – Wooden Platform - 29° 37.241'N 94° 59.695'W
  - GBCA “H” - Flat-top Platform - 29° 33.255'N 94° 56.542'W
  - GBCA “E” - Low Range Tower - 29° 35.787'N 94° 56.935'W
  - GBCA “F” - High Range Tower - 29° 34.671'N 94° 56.518'W
- 10.3 In the event a Mark is missing, a boat shall round the respective GPS coordinates.

## 11 OBSTRUCTIONS

- 11.1 The following area is designated as an obstruction: The Houston Ship Channel. Reference is made to NOAA Electronic Navigational Chart US5TX54M, Upper Galveston Bay-Houston Ship Channel-Dollar Pt. to Atkinson (1/29/2021).
- 11.2 **Any commercial traffic encountered while rounding the Bayport Channel mark shall be treated as an obstruction. At no time does a vessel racing have right of way over commercial traffic. Any disruption of commercial traffic will be subject to disqualification without a hearing and Board review of participation in future GBCA events. This changes RRS 60.1 & 60.2.**

## **12 THE START**

- 12.1 Races will be started using RRS 26 with the warning signal made 5 minutes before the starting signal.
- 12.2 The starting line is between a staff displaying an orange flag on the signal vessel at the starboard end and the course side of the port-end starting mark.
- 12.3 Boats whose warning signal has not been made shall avoid the starting area during the starting sequence for other races.
- 12.4 If any part of a boat's hull is on the course side of the starting line at her starting signal and she is identified, the race committee may attempt to hail her sail number. Failure to hail her number, failure of her to hear such a hail, or the order in which boats are hailed will not be grounds for a request for redress. This changes RRS 61.
- 12.5 A boat that does not start within 10 minutes after her starting signal will be scored Did Not Start (DNS) without a hearing.

## **13 THE FINISH**

- 13.1 The finishing line is between a staff displaying a blue flag on the RC vessel and the course side of a nearby finishing mark.
- 13.2 If the race committee is absent when a boat finishes, she shall report her finishing time, and her position in relation to nearby boats, to the race committee at the first reasonable opportunity. It is recommended you take a photograph of GPS time and coordinates to support.

## **14 TIME LIMIT**

- 14.1 Boats failing to Finish by 19:00 shall be scored DNF (Did Not Finish) without a hearing. This changes RRS 35, A5.1 and A5.2.

## **15 HEARING REQUESTS**

- 15.1 The protest time limit is 60 minutes after the last boat finishes. This time will be placed on the official notice board.
- 15.2 Any boats planning on filing a hearing request shall notify the Race Committee via VHF radio prior to leaving the finish area.
- 15.3 Paper hearing request forms are available from the GBCA clubhouse, however electronic filings using the US Sailing app are preferred by the protest committee. Please forward all filings to [may.chris.w@gmail.com](mailto:may.chris.w@gmail.com).
- 15.4 Notices of protests and the hearing schedule will be posted no later than 30 minutes after the close of the deadline for filing protests. Notices and schedules will be posted using the Regatta Network official notice board at: [http://www.regattanetwork.com/clubmgmt/applet\\_notice\\_board.php?regatta\\_id=29208](http://www.regattanetwork.com/clubmgmt/applet_notice_board.php?regatta_id=29208)

- 15.5 Notices of protests by the race committee, technical committee, or protest committee will be posted to inform boats under RRS 60.2(d).
- 15.6 Breaches of Sailing Instructions 3.3, 6.2, 16.3, 18, and 19 will not be grounds for a protest or request for redress by a boat. This changes RRS 60.1.

## **16 SCORING**

- 16.1 One race is required to be completed to constitute a regatta.
- 16.2 ORC boats will be scored Time on Time using the appropriate Triple Number data per each boat's certificate. Prior to the ORC class warning signal, Race Committee will announce the intended Triple Number to be used. The appropriate Triple Number (All-purpose, Windward/Leeward, Predom. Upwind, Predom. Downwind) will be determined at the Race Committee's discretion by observance of the prevailing conditions over the course of the race. If Race Committee intends to change the Triple Number from what was announced, they shall announce via VHF the new Triple Number to be used prior to the first boat finishing in the ORC class. The Triple Number decision used shall not be grounds for redress. This changes Rule 62.1.
- 16.3 PHRF, Cruising Club, and Multi-hull Handicap classes will be scored using Time on Time with the following conversion formula:  $TCF=650/(550+x)$ , where x equals PHRF, TOMA, or Cruising Club Handicap.

## **17 SAFETY REGULATIONS**

- 17.1 Prior to the first warning signal, each boat is required to check in by passing the stern of the respective race committee vessel on starboard tack or via respective VHF channel.
- 17.2 [DP] A boat that retires from a race shall notify the race committee at the first reasonable opportunity by VHF or cell phone.
- 17.3 Contacts for Race Committee: Chris May 713-591-8115

## **18 OFFICIAL VESSELS**

- 18.1 Official vessels will be identified with either the traditional race committee flag (red, fouled anchor on a blue field with red letters "R" and "C"), or GBCA burgee.

## **19 TRASH DISPOSAL**

- 19.1 Trash shall be properly disposed of when a vessel returns to shore.

## 20 PRIZES

20.1 Prizes will be given for 1<sup>st</sup> through 3<sup>rd</sup> places in each class based on number of entries as follows:

- 3 entries – 1<sup>st</sup> Place
- 6 entries – 1<sup>st</sup>, 2<sup>nd</sup> Place
- 9+ entries – 1<sup>st</sup>, 2<sup>nd</sup>, and 3<sup>rd</sup> Place, etc.

20.2 For the purpose of awarding the Bill Scott Memorial Charge! Cup perpetual trophy, the ORC Class and the J-105 Class will be combined into a single ranking. The trophy will be awarded to the competitor with the lowest corrected time among all boats in both classes.

20.2(a) The ORC Class will be scored using ORC time-on-time corrected times, based on each boat's valid ORC certificate.

20.2(b) The J-105 Class will be scored using ORC time-on-time corrected times, based on a valid ORC certificate in one-design configuration.

20.3 Individual class results will be maintained separately for purposes of all class awards and scoring.

## 21 RISK STATEMENT

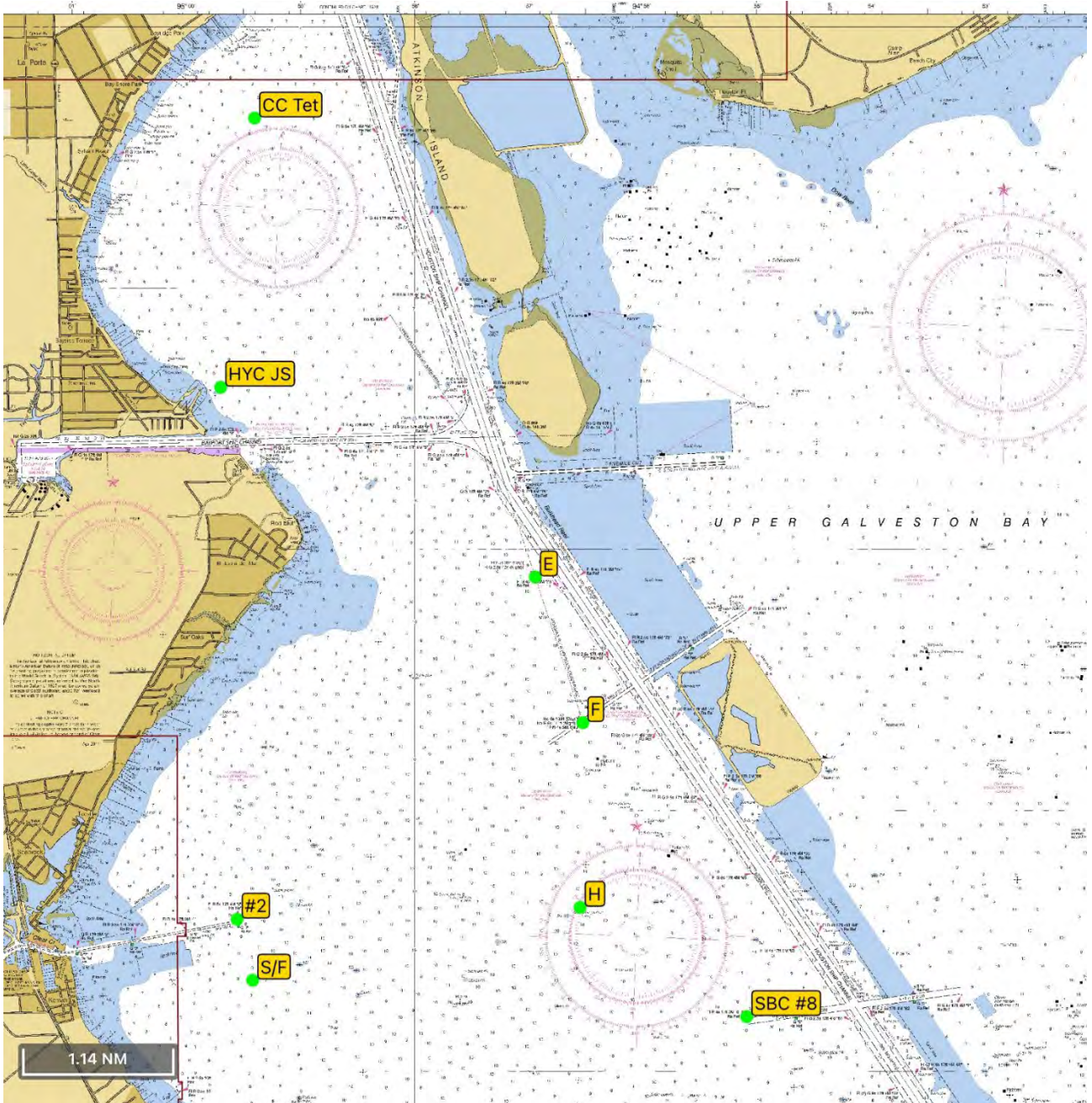
21.1 RRS 3 states: 'The responsibility for a boat's decision to participate in a race or to continue *racing* is hers alone.' By participating in this event each competitor agrees and acknowledges that sailing is a potentially dangerous activity with inherent risks. These risks include strong winds and rough seas, sudden changes in weather, failure of equipment, boat handling errors, poor seamanship by other boats, loss of balance on an unstable platform and fatigue resulting in increased risk of injury. **Inherent in the sport of sailing is the risk of permanent, catastrophic injury or death by drowning, trauma, hypothermia or other causes.**

## 22 INSURANCE

22.1 Each participating boat shall be insured with valid third-party liability insurance with a minimum cover of \$300,000 per incident or the equivalent.



**SI ADDENDUM #1**  
**Race Area**



**SI Addendum #2**  
**Courses**

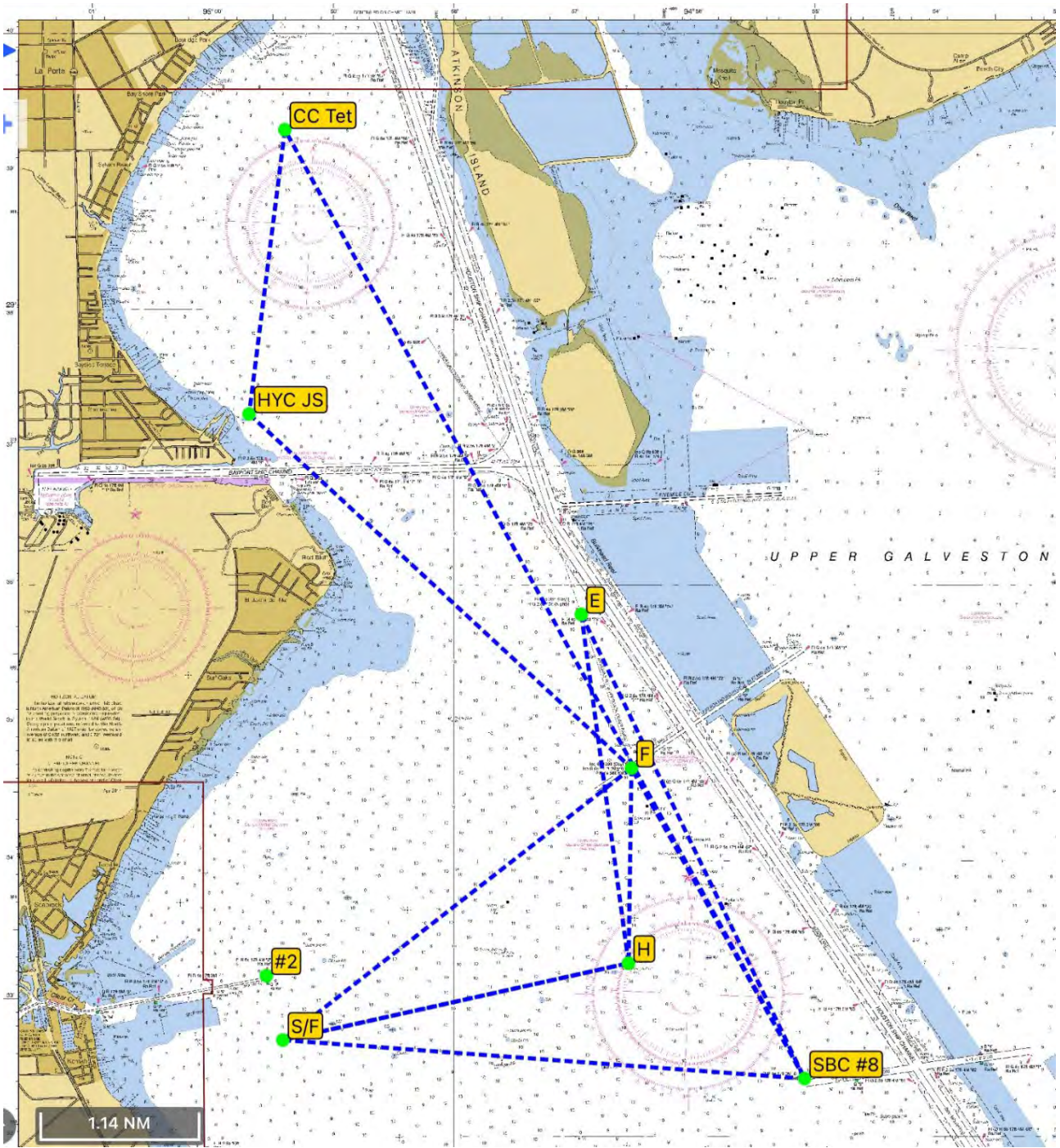
**Course 1**

<b><u>Mark</u></b>	<b><u>Est .Bearing</u></b>	<b><u>Distance (nm)</u></b>	<b><u>Leave Mark to:</u></b>
Start/Finish			
SBC #8	094	3.78	Port
CC Tet	331	7.84	Port
HYC JS	187	2.08	Port
F	133	3.77	Starboard
S/F	232	3.20	Port
H	077	2.56	Port
E	352	2.55	Port
SBC #8	154	3.74	Port
F	331	2.58	Port
H	180	1.42	Starboard
Start/Finish	257	<u>2.56</u>	
	Total Dist.	36.08 nm	

**Per RRS, the course can be shortened. Pay attention to signals approaching any mark of the course.**



# Course 1



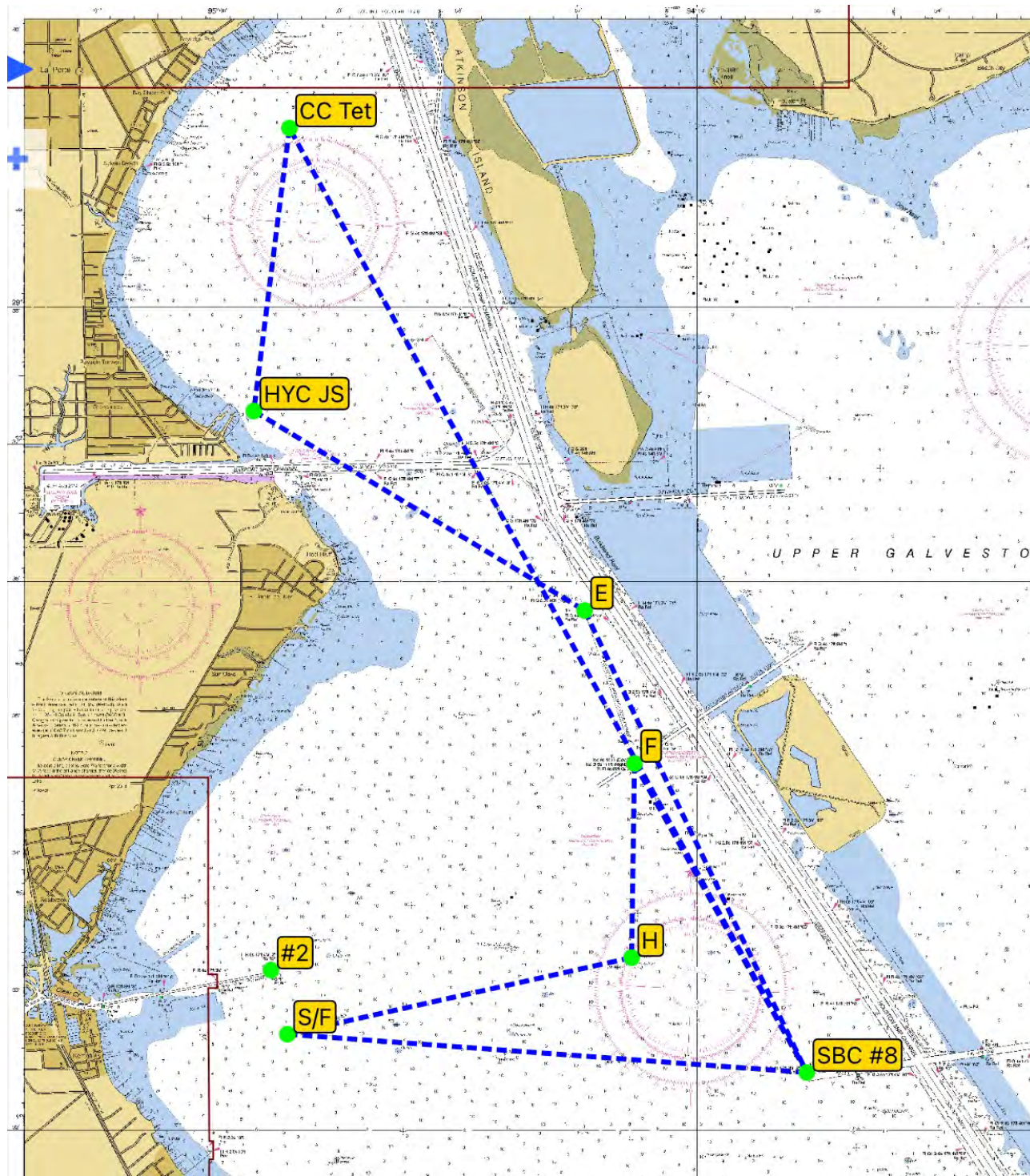
## Course 2

<b>Mark</b>	<b>Est. Bearing</b>	<b>Distance</b>	<b>Leave Mark to:</b>
Start/Finish			
SBC #8	094	3.78	Port
CC Tet	331	7.84	Port
HYC JS	187	2.08	Port
E	121	2.81	Starboard
SBC #8	154	3.74	Port
F	331	2.58	Port
H	180	1.42	Starboard
Start/Finish	257	<u>2.56</u>	
	Total Dist.	26.81 nm	

Per RRS, the course can be shortened. Pay attention to signals approaching any mark of the course.



## Course 2



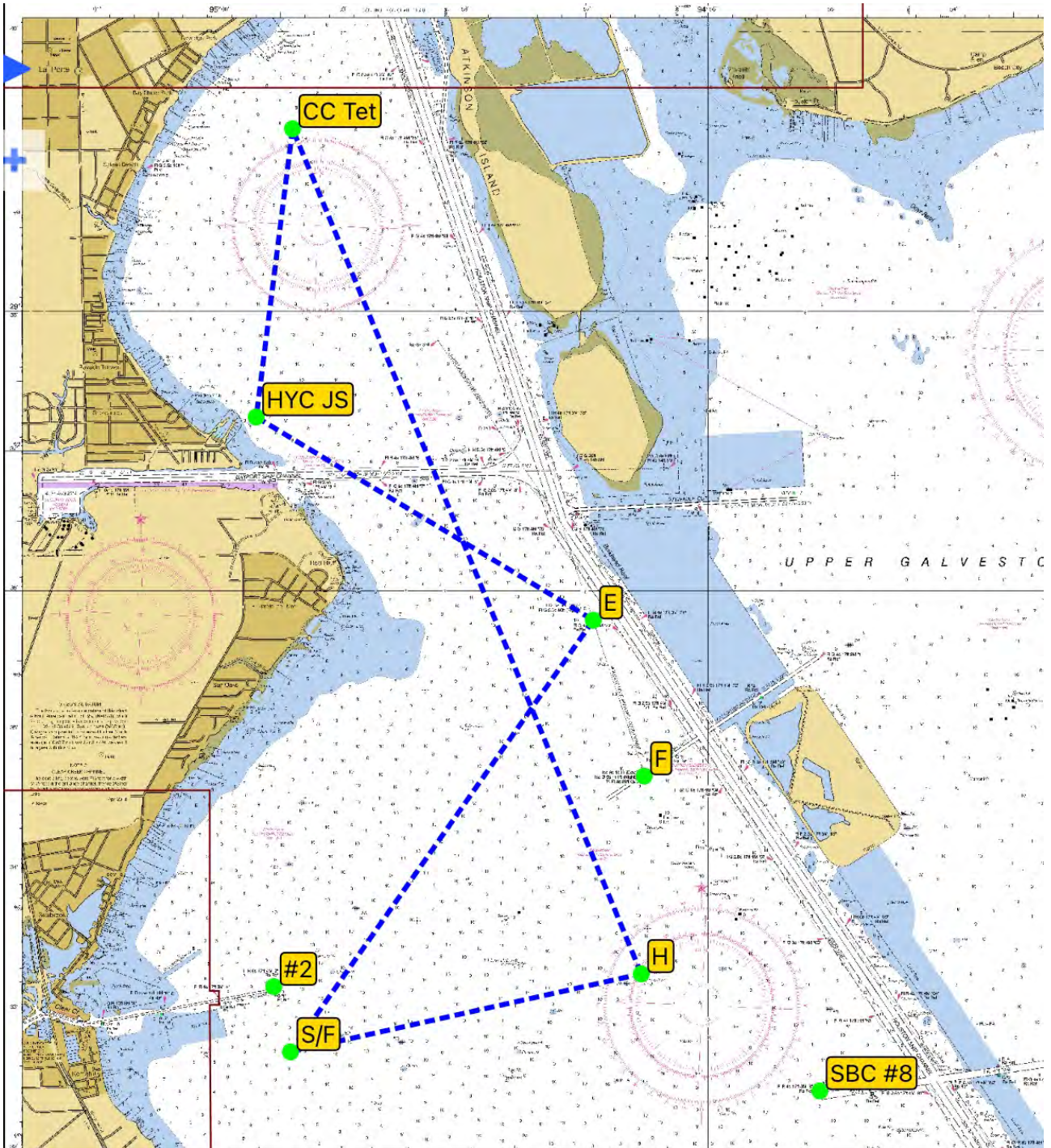
### Course 3

<b>Mark</b>	<b>Est. Bearing</b>	<b>Distance</b>	<b>Leave Mark to:</b>
Start/Finish			
H	077	2.56	Port
CC Tet	338	6.54	Port
HYC JS	187	2.08	Port
E	121	2.81	Starboard
H	172	2.55	Starboard
Start/Finish	257	2.56	
	Total Dist.	19.1 nm	

Per RRS, the course can be shortened. Pay attention to signals approaching any mark of the course.



# Course 3





### Scratch Sheet – Cruising Club-Spin

<u>FLEET</u>	<u>BOATNAME</u>	<u>MODEL</u>	<u>SAIL</u>	<u>NAME</u>	<u>HANDICAP</u>	<u>TCF</u>
Cruising Club-Spin	Sunspot Baby	340	360	Bill Tarnick	171	0.90153
Cruising Club-Spin	Alchemy	320	98	James Miller	162	0.91292
Cruising Club-Spin	Leopard	S2 10.3	31630	Robert Hunkins	138	0.94477
Cruising Club-Spin	Rainbow	3500	51841	William Lind	129	0.95729
Cruising Club-Spin	Alive and Free	Legend 37.5	717	Greg Green	126	0.96154
Cruising Club-Spin	Danelaw	42-2	10312	Roy Olsen	120	0.97015
Cruising Club-Spin	Hobgoblin	Legend 40	586	Marty Pedowicz	120	0.97015
Cruising Club-Spin	Joyride	First 42S7	46864	Greg Casamayor	75	1.04000

---

### Scratch Sheet – PHRF NS

<u>FLEET</u>	<u>BOATNAME</u>	<u>MODEL</u>	<u>SAIL</u>	<u>NAME</u>	<u>HANDICAP</u>	<u>TCF</u>
PHRF NonSpin	Bonifacio	250	426	Kelly Soich	265	0.79755
PHRF NonSpin	Sloop Dog	376	376	Robert Penn	151	0.92725
PHRF NonSpin	Looking Good	38	179	Frank Caruso	146	0.93391
PHRF NonSpin	Picante	First 36.7	25527	Adolph Mares	98	1.00309

---

### Scratch Sheet – Multi

<u>FLEET</u>	<u>BOATNAME</u>	<u>MODEL</u>	<u>SAIL</u>	<u>NAME</u>	<u>HANDICAP</u>	<u>TCF</u>
Multi-hull	Tri'd N True (TnT)	F27	49	William Johnson	72	1.04502
Multi-hull	Icarus	760	148	Kevin Grice	39	1.10357

---

### Scratch Sheet – SCHRS

<u>FLEET</u>	<u>BOATNAME</u>	<u>MODEL</u>	<u>SAIL</u>	<u>NAME</u>	<u>HANDICAP</u>
SCHRS	Big Plans	Miracle 20	1096	Greg Congdon	1.086
SCHRS	Plan B	Miracle 20	1028	Scott Tuma	1.086
SCHRS	PICKLE	A Class Classic	270	John Baker	1.026
SCHRS		F16	156	Chris Santerre	1.038

---