



# Lauderdale Yacht Club - 80th Annual Boomerang Regatta

Sponsored by:  and 

## INSIDE COURSE SAILING INSTRUCTIONS

### 1. RULES

The regatta will be governed by The Racing Rules of Sailing (RRS), as modified by these instructions.

### 2. ENTRIES

Eligible boats may be entered by completing registration (including providing valid payment) with the Lauderdale Yacht Club Race Committee by 0845 on March 1, 2025.

### 3. EQUIPMENT

Each boat shall display the colored streamer provided by the Race Committee from the top end of the sprit.

### 4. NOTICE TO COMPETITORS

Notices to competitors will be posted at the official regatta notice board located at the Lauderdale Yacht Club Pavilion.

### 5. CHANGES IN SAILING INSTRUCTIONS

Unless made afloat in accordance with SI 7.2 below, any change in the sailing instructions will be posted by 0900 on the day it will take effect. Any change to the schedule of races will be posted by 2000 on the day before it will take effect.

### 6. SIGNALS MADE ASHORE

- 6.1. Signals made ashore will be displayed at the easternmost flagpole of the Lauderdale Yacht Club. Signals applying to the Optimist Course shall be accompanied by a flag with an Opti logo. Signals applying to the Ocean course shall be accompanied by a flag with a Laser logo.
- 6.2. When code flag AP, Answering Pennant, is displayed and subsequently lowered, the time of the warning signal for the next race is posted on the regatta notice board. This changes *Race Signals*.

### 7. ORAL INSTRUCTIONS

- 7.1. When Code Flag "L" is displayed ashore, all skippers are instructed to proceed to the "Official Regatta Notice Board."
- 7.2. When Code Flag "L" is displayed afloat oral instructions may be given by the Race Committee on the water. All competitors shall pass astern of the Race Committee Signal Boat on starboard tack. These Oral Instructions shall constitute a change in the Sailing Instructions.

## **8. SCHEDULE**

On Saturday and Sunday, there will be a Skippers Meeting at 0930 at the Lauderdale Yacht Club Pavilion, with racing to follow as soon as possible, and after all ILCA's and Ocean Fleet classes have launched and cleared the racing area.

**No green fleet sailor should launch prior to the Ocean Fleet sailors on each race day.**

## **9. RACING AREA**

**9.1** The racing area is the area west of the Intracoastal Waterway, east of the mouth of the various canals near the Lauderdale Yacht Club, but does not include any area near the finish line where sailors are directed to wait at the Skipper Meeting or by the Race Committee (the "waiting area"). All boats are required to stay clear of the racing area when not racing or preparing to race. Green Fleet competitors who are not racing are requested to wait in the canal immediately to the North of Lauderdale Yacht Club.

**9.2** No competitor may sail in the Intracoastal Waterway, at any time.

**9.3** Boats failing to comply with this section are subject to protest by the Race Committee only.

## **10. COURSES**

See Appendix "A", attached to these sailing instructions. Note that Course "B" contains a restricted Start / Finish line.

## **11. MARKS**

**11.1.** Marks will be described in detail at the skipper's meeting.

**11.2.** The starting line will be between a staff displaying an orange flag on Race Committee Signal boat and a Pin Boat, also displaying an orange flag, as described at the skipper's meeting.

## **12. THE START**

**12.1.** Races will be started in accordance with Appendix U – Sound Signal Starting System.

**12.2.** The order of the start and the class flags for each will be announced at the Skippers Meeting. Classes may be combined.

**12.3.** Rule 30.3 ("U-Flag Rule") will be in effect at the race committee's discretion, following one general recall (non-U-Flag start) each day. A U flag may be displayed. The Race Committee will verbally inform the competitors of the U-Flag prior to their starting signal, and prior to the 1 minute mark before the start.

**12.4.** Boats whose warning signal has not been made shall keep clear of the starting area.

**12.5.** A boat shall not start later than four minutes after her starting signal.

**12.6.** In the event of a general recall, the same class shall restart and the starts for any succeeding classes shall follow the new start.

## **13. NOT COMPETING OR RETIRING**

A boat that decides not to compete in a race or retires after starting a race shall notify the Race Committee or report to a designated Safety Boat as soon as practical.

**15. FINISH**

- 15.1.** The finish line will be between the signal boat displaying an orange flag and the finish buoy (as described at skippers meeting) located on the port side of the signal boat.
- 15.2.** After finishing, all boats shall keep clear of the racing area and remain clear until the last boat has finished unless otherwise directed by the Race Committee.

**16. TIME LIMIT**

- 16.1** The time limit for the first boat to finish the race will be 45 minutes. Boats failing to finish within 20 minutes after the first boat in her class finished will be scored DNF. This modifies Rule 35.

**17. PROTESTS AND REDRESS**

- 17.1.** Appendix T will apply for this event but T1(b) is changed to a 20% penalty.

**18. SCORING**

- 18.1.** The Low Point scoring system, Rule A2, will apply, modified so that each boat's regatta score will be the total of her race scores, with her worst score discarded if six races have been completed.
- 18.2.** Six races are scheduled for each day, of which one race shall be completed to constitute a regatta.
- 18.3.** Green Fleet Sailors will be randomly assigned into either the Green-Green or Green-Yellow fleets for Saturday's preliminary series. On Saturday, each sailor must display, at the top of their sprit pole, either a Green ribbon (signifying Green-Green fleet) or a Yellow ribbon (signifying Green-Yellow fleet). The competitor ribbon displayed Saturday must correspond correctly to the fleet split posted on the official notice board.
- On Sunday, regardless of the number of races completed, the competitors will be required to adjust their displayed ribbon to correspond to their new fleet assignment following Saturday's preliminary series described below.
- 18.4.** Green-Green and Green-Yellow will have separate starts on Saturday. On Sunday, the Yellow Fleet *i.e.* the "Gold Fleet" (utilizing yellow ribbons), and the Green Fleet, *i.e.*, the "Silver Fleet" (utilizing green ribbons) will have separate starts.
- 18.5.** Following Saturday's preliminary series, if at least one race has been completed in both the Green-Green and Green-Yellow fleets, the top 50% of sailors in the Green-Yellow and Green-Green fleets will be placed into the Yellow Fleet (*i.e.* the "Gold Fleet") for Sunday's races. The remaining sailors will be placed into Green Fleet (*i.e.* the "Silver Fleet") for Sunday's races.
- 18.6.** A competitor's final score total shall reflect their total score, less their worst score if six or more races are completed, and less their second-worst score if 12 or more races are completed. If six races are completed Saturday, each boat's worst score will be discarded prior to the fleet split calculation.

**19. SUPPORT AND SPECTATOR BOATS**

- 19.1.** Team leaders, spectators, coaches and other support personnel shall not be in the

Racing Area from the time of the warning signal for the first class to start until all boats have finished, or the Race Committee signals a postponement, general recall or abandonment.

- 19.2. All support and spectator boats are requested to monitor channel 70 for requests from the Race Committee to assist with fleet safety.
- 19.3. Support and spectator boats may only enter the race area at the request of the Race Committee or when they deem it necessary to assist a boat in distress.

**20. ENFORCEMENT OF RULES 42 (PROPULSION)**

- 20.1 Appendix P of the RRS will be in effect; however, competitors who observe a violation of Rule 42 are expected to protest. Judges may or may not be present enforcing Appendix P. RRS P2.3 will not apply, and RRS P2.2 is changed so that it will apply to any penalty after the first one.
- 20.2 The Principal Race Officer on the signal boat is a designated observer in accordance with RRS P1.

**21. ADVERTISING.**

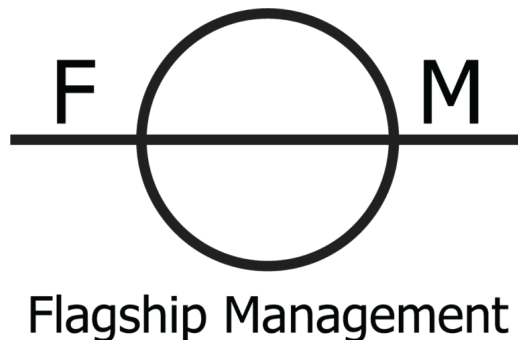
- 21.1 Competitors may have any advertising on their boat and sails.
- 21.2 Anyone still reading this deserves free ice cream. If you are one of the first five (5) competitors to approach the scoring inquiry desk and say “Boomerang is Awesome!” you will receive free ice cream.

**22. COACHING IN GREEN FLEET.**

After the start, coaches appointed by the Race Committee will be permitted to provide basic boat handling assistance and encouragement for the **bottom half** of the Green Fleets. Tactical or other assistance provided to any sailor, as well as any interaction with the sailor in the top half of the fleet, may result in one (1) warning to a coach or parent, and then may result in disqualification from that race.

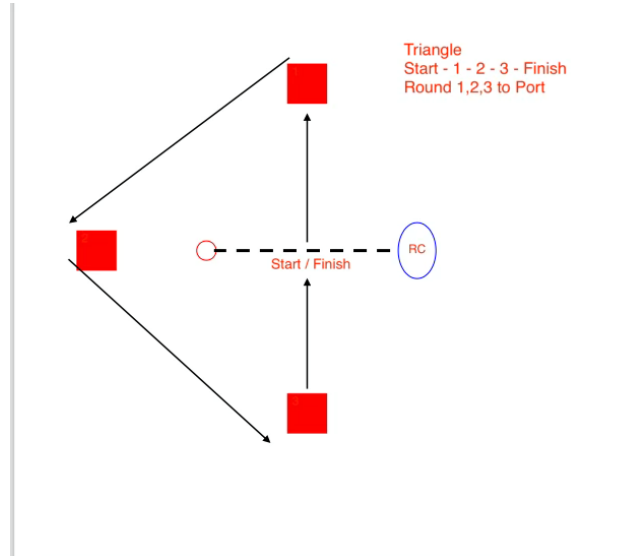
Let’s give the competitors space to learn and focus our coaching efforts on the back half of the fleet.

Good Luck!



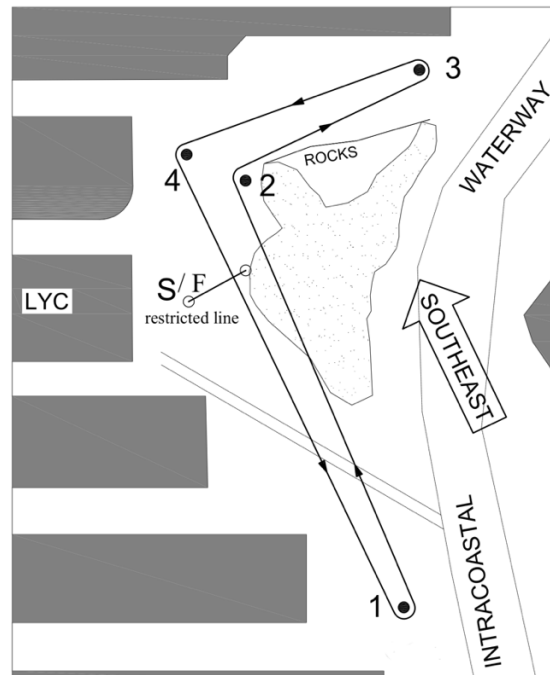
## APPENDIX A – INSIDE RACE COURSES

### COURSE A (TRIANGLE)



### COURSE B (BOOMERANG)\*

Start 1 – 2 – 3 – 4 - Finish. Round 1, 3, and 4 to Port. Round 2 to Starboard.  
Restricted Start / Finish line.



\*Note: Course B may be utilized **even if the actual wind direction does not match the "SOUTHEAST" direction at the angle depicted.**