

SAILING INSTRUCTIONS FOR THE CENTER STRAIT SERIES

Race #1

Lawson Reef Race March 29th - 09:30am GPS time

Start: Guemes Channel West Entrance between G3 & R4.

Course:

- Lawson Reef RG Mark to Starboard,
- R2 Bell Bouy to Starboard

Finish: Guemes Channel West Entrance between G3 & R4. Take your GPS Finish time!

Distance: 20.6nm

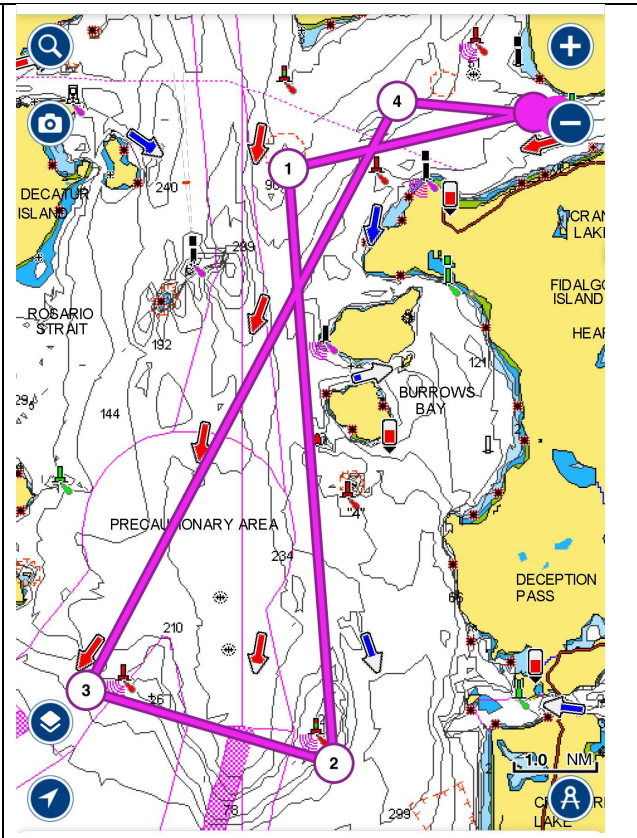
Short Course Distance: 8.9nm

Short Course: Lawson Reef RG Mark to Starboard, magnetic compass bearing 000'

Notes:

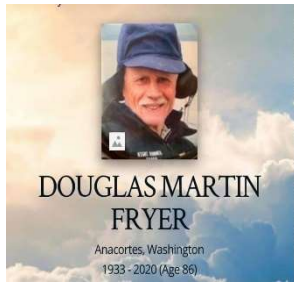
Skippers take your time at Lawson Reef RG Mark, in case race is shortened due to light air.

Skippers will report (text) their finish time to Frank Parker, (757) 718-9781.



SAILING INSTRUCTIONS FOR THE CENTER STRAIT SERIES

RACE #2



Doug Fryer Memorial

SMITH ISLAND RACE April 5th - 09:30am GPS time

Start: Guemes Channel West Entrance between G3 & R4.

Course:

- Smith Island to Port

Finish: Guemes Channel West Entrance between G3 & R4. Take your GPS Finish time!

Distance: 29nm

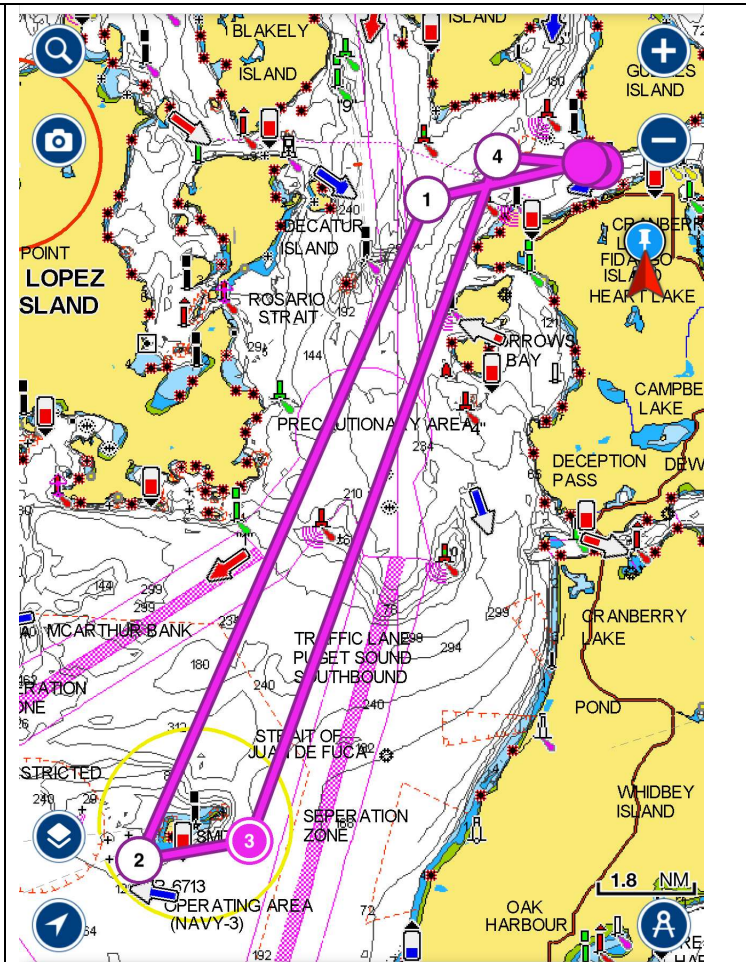
Short Course Distance: 14.5nm

Short Course: Smith Island S.W. point bears magnetic compass 000'

Notes:

Skippers take your time at Smith Island S.W. point in case race is shortened due to light air.

Skippers will report (text) their finish time to Frank Parker, **(757) 718-9781**.



SAILING INSTRUCTIONS FOR THE CENTER STRAIT SERIES

RACE #3

Davidson Rock (Rum Race) April 26th - 9:30 GPS time

Start: Guemes Channel West Entrance between G3 & R4.

Course:

- Davidson Rock Light to Port

Finish: Guemes Channel West Entrance between G3 & R4. Take your GPS Finish time!

Distance: 20.1nm

Short Course Distance: 9.5nm

Short Course: Davidson Rock Light magnetic compass bearing 000'

Notes:

Skippers take your time at Davidson Rock Light, in case the race is shortened due to light air.

Skippers will report (text) their finish time to Frank Parker, (757) 718-9781.

