

SAILING INSTRUCTIONS FOR THE OTTERSTEDT ISLAND SERIES

RACE #1

POST POINT RACE MAY 10th – 11:00 GPS time

Start: Between R2 and the Refinery Pier Range Mark

Course:

- Round Post Point Lighted Bouy R2 to Port

Finish: Between R2 and the refinery pier range mark

Distance: 25nm

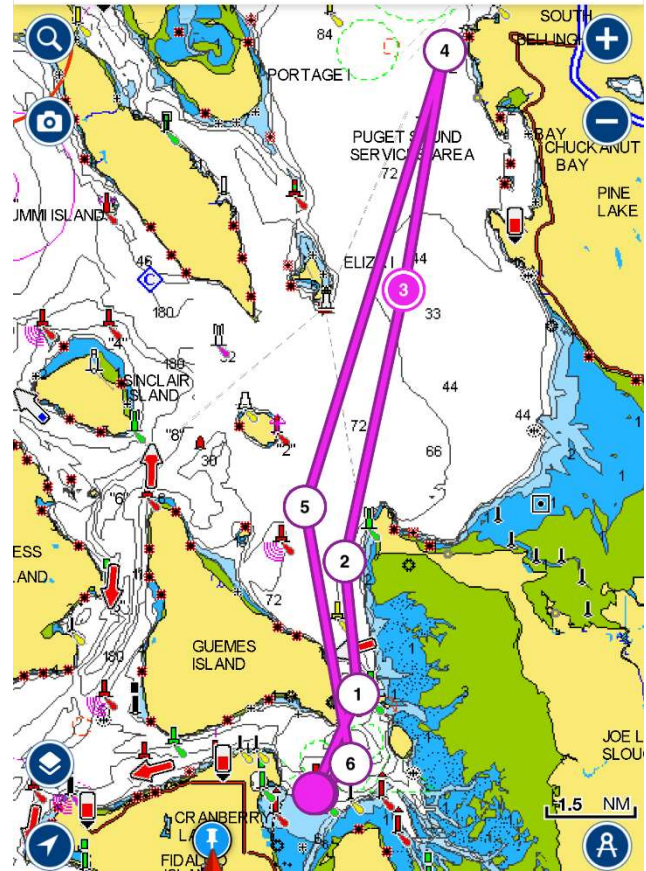
Short Course Distance: 12.5nm

Short Course: Post Point Lighted Bouy R2 magnetic compass bearing 180'

Notes:

Skippers take your time at Post Point Lighted Bouy R2 in case the race is shortened due to light air.

Skippers will report (text) their finish time to Frank Parker, (757) 718-9781.



SAILING INSTRUCTIONS FOR THE OTTERSTEDT ISLAND SERIES

RACE #2

VENDOVI ISLAND RACE JUNE 14th – 11:00 GPS time

Start: Between R2 and the Refinery Pier Range Mark

Course:

- Round Vendovi Island to Port or Starboard (Skipper's Choice!)

Finish: Between R2 and the Refinery Pier Range Mark

Distance: 14.8nm

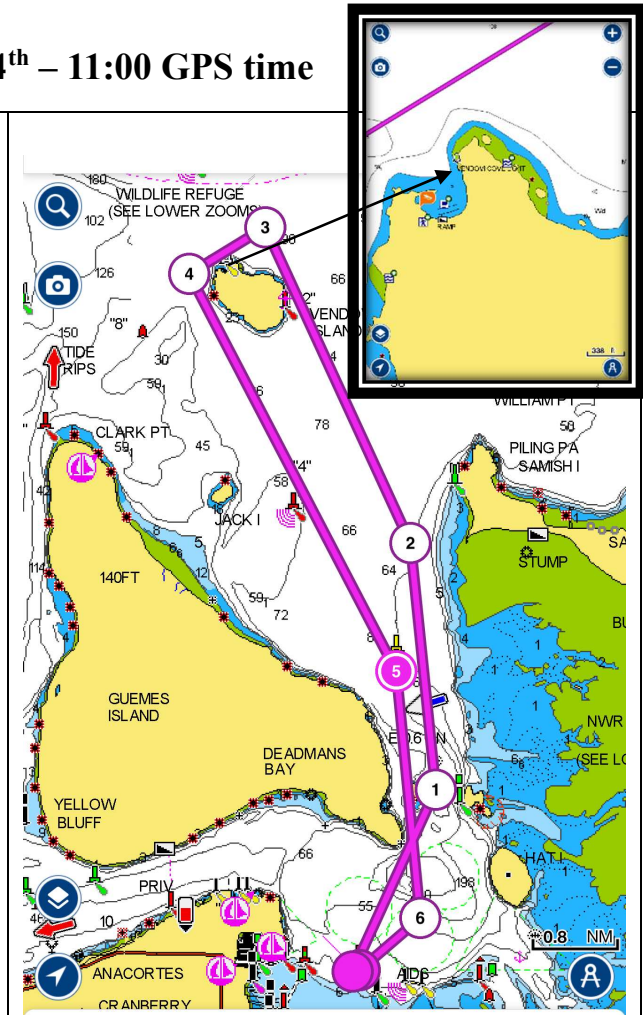
Short Course Distance: 7.4nm

Short Course: Vendovi Cove Light, magnetic compass bearing 180'

Notes:

Skippers take your time at Vendovi Cove Light in case race is shortened due to light air.

Skippers will report (text) their finish time to Frank Parker, (757) 718-9781.



SAILING INSTRUCTIONS FOR THE OTTERSTEDT ISLAND SERIES

RACE #3

JACK ISLAND RACE JULY 5th – 11:00 GPS time

Start: Between R2 and the Refinery Pier Range Mark

Course:

- Round Padillia Bay lighted Bell Bouy R4 to Port
- Round Jack Island to Port

Finish: Between R2 and the Refinery Pier Range Mark

Distance: 10.8nm

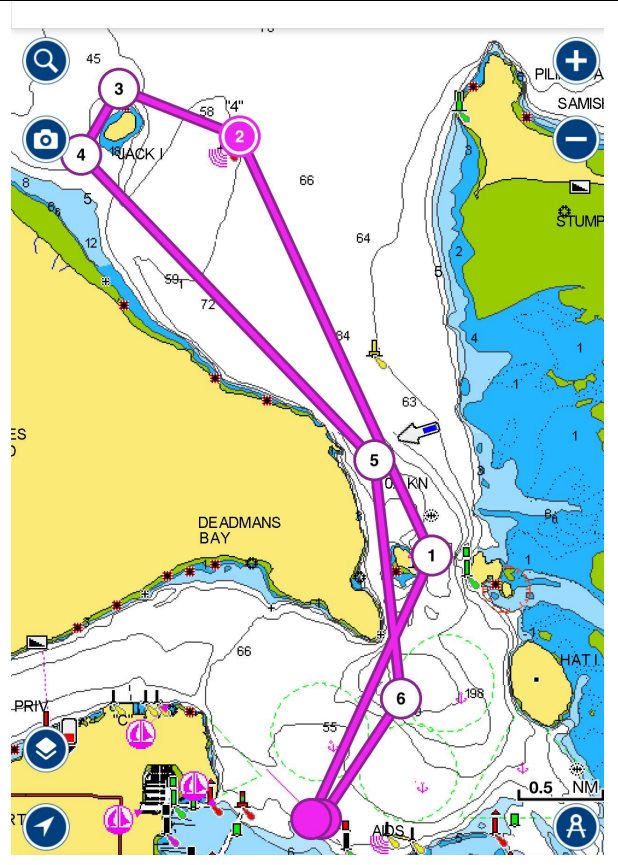
Short Course Distance: 5.4nm

Short Course: Center of Jack Island, magnetic compass bearing 180°

Notes:

Skippers take your time at Jack Island in case the race is shortened due to light air.

Skippers will report (text) their finish time to Frank Parker, (757) 718-9781.



SAILING INSTRUCTIONS FOR THE OTTERSTEDT ISLAND SERIES

RACE #4

GUEMES ISLAND NIGHT RACE July 19th – 19:30 GPS time

Ok! Here's a chance to check out your "Nav Lights" before Northern Century.

Start: Between R2 and the Refinery Pier Range Mark

Course:

- Guemes Island to Port or Starboard (Skippers Choice!)
- Pass Eastward of Padilla Bay Lighted Bell Bouy #R4, by Jack Island.
- Pass Northward of Padilla Bay Lighted Bouy #R6 by Clark Point (Northern tip of Guemes Island.)

Finish: Between R2 and the Refinery Pier Range Mark

Distance: 15nm

Short Course Distance: 7.5nm

Short Course: Lighted Bouy #R6 by Clark Point, magnetic compass bearing 180'

Notes:

Skippers take your time at Lighted Bouy #R6 by Clark Point, in case the race is shortened due to light air.

Skippers will report (text) their finish time to Frank Parker, (757) 718-9781.

