

SAISA SOUTH POINTS #5

April 12, 2025

Sailing Instructions

Hosted by: Sarasota Youth Sailing

Location: Ken Thompson Park, 1717 Ken Thompson Pkwy, Sarasota, FL 34236

1. RULES:

1.1. This regatta will be governed by the current ISSA Procedural Rules and SAISA Supplementary Rules, The Racing Rules of Sailing, the prescriptions of US SAILING, the Notice of Race, and as modified by these Sailing Instructions.

2. NOTICE TO COMPETITORS:

2.1. Notices will be posted on the SYS Office Container in the SSS south yard

3. CHANGES IN THE SAILING INSTRUCTIONS:

3.1. Any changes in the Sailing Instructions will be posted on the Official Notice Board by the end of the competitors' meeting on Saturday.

4. ENTRY FEE

4.1 Entry Fee is \$75 per team.

5. SCHEDULE OF RACES:

5.1 Saturday, April 12, 2025

0830 Check-in, rigging of boats and bow number check-in.

0915 Skippers' meeting at Ken Thompson Park.

1000 Start of the first race of the day.

6. BOATS:

6.1. Each team must bring their own boat and equipment, and will sail their own boat in each race. This changes ISSA Procedural Rules 7.4(a), 7.4(b), and 7.6; and SAISA Supplemental Rules 4.5 and 4.6.

6.2. All VARSITY boats will be assigned jibs at check-in that must be used for the duration of the event unless permission for a substitution is given by the Regatta Chair or PRO.

6.3. Since all equipment is provided by each team, no redress shall be given under ISSA Procedural Rule 9(e), except for a breakdown of a jib provided by the Organizing Authority. Similarly, competitors are responsible for maintaining.

7. SIGNALS MADE ASHORE:

7.1. Signals made ashore will be displayed on the flagpole at the Sarasota Sailing Squadron.

7.2. When the AP flag is displayed ashore, '1 minute' is replaced with 'not less than 15 minutes' in the race signal AP.

8. RACING AREA:

8.1. The racing area will be south east of the Sarasota Sailing Squadron mooring field.

9. ROTATION:

9.1. This will be a two-division regatta; teams will sail two races as a set, then swap A & B Divisions using the same boat. The RC also has the option to run 1 or 3 races in a set to help increase the number of races that can be scored for the event. NO ROUND ROBIN ROTATION.

9.2. Varsity Boats will be identified by the number on their jib. Jib numbers will be assigned at check in.

9.3. JV Boats will be identified by the number on their mainsail, which must be present.

10. THE COURSE:

10.1. Courses shall be approximately 15-18 minutes in length.

10.2. Course diagrams (TBD) will be posted as "Appendix A" on Regatta Network.

10.3. Rounding marks will be orange marks.

10.4. If a leeward gate (2S or 2P) mark is missing, the single leeward mark will be rounded to port.

11. START:

11.1. The starting line will be between an orange flag on the race committee boat and an orange ball.

11.2. Races will be started in accordance with ISSA Procedural Rule 7.8.

12. RECALLS:

12.1 The Race Committee may attempt to notify individual boats by hailing their organizer provided jib numbers (or for JV their mainsail number).

13. THE FINISH:

13.1. The finish line will be between a staff displaying a flag on the Race Committee Finish boat and a white ball.

13.2. If one or more boats are unreasonably delaying the completion of a race, the race committee may score the boat(s) in place and terminate the race. This changes RRS 35 and A4.

14. SAFETY AND CONSERVATION:

14.1. A boat which retires from a race is asked to notify the race committee before leaving the course area.

14.2. Competitors who require assistance from a safety boat should signify by waving their arms overhead.

14.3. Competitors are strongly encouraged to use reusable water bottles. Multiple coolers of cold water will be available for refilling and a water bottle refill station is located on the outside south wall of the Sarasota Sailing Squadron and at the water fountains in Ken Thompson Park.

15. SCORING:

15.1. Scoring will be in accordance with ISSA Procedural Rule 9 and 11.

15.2. Three races must be completed to constitute a regatta in accordance with ISSA Procedural Rule 17.4(c).

16. PROTESTS AND REQUESTS FOR REDRESS:

16.1. Protest procedure will be in accordance with ISSA Procedural Rules Section 16.

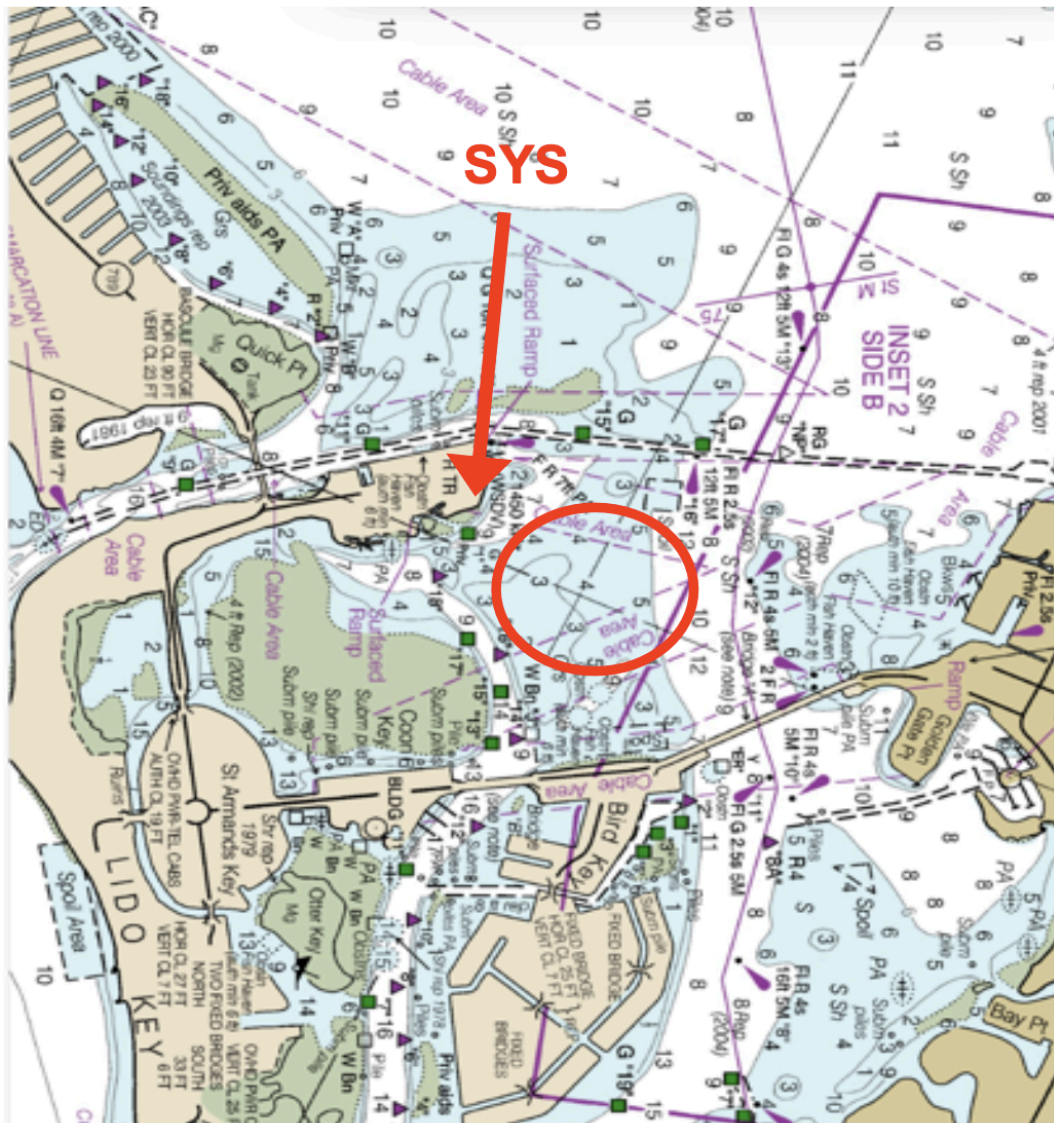
17. COACHING:

17.1. Unless it is with the permission of the Race Committee: team leaders, coaches and other support personnel shall not go afloat in the racing area during the event.

17.2. All coaching, crew rotations, exchange of clothing / food / drink, and communication shall occur from land or as instructed by the Race Committee.

17.3. Coaches viewing site will be on the south most point of City Island.

Appendix A – Approximate Racing Area



Sample Course Diagram

