

Clearwater Hobie Wave Championship

Clearwater Community Sailing Center

March 8-9 2025

## Sailing Instructions/NOR

### 1. RULES

1.1 The regatta will be governed by the rules as defined in *The Racing Rules of Sailing* (RRS).

1.2 If there is a conflict between languages, the English text will take precedence.

### 2. NOTICES TO COMPETITORS

Notices to competitors will be posted on the official notice board located in between the shop and the bathrooms.

### 3. CHANGES TO SAILING INSTRUCTIONS

Any change to the sailing instructions will be posted before 0900 on the day it will take effect, except to the extent that any change to the schedule of races will be posted by 1800 on the day before it will take effect.

### 4. SIGNALS MADE ASHORE

4.1 Signals made ashore shall be made from the flag pole in the middle of the main yard.

4.2 When flag "AP" is displayed, "1 minute" is replaced with "not less than 30 minutes" in Race signal "AP". This changes race signal "AP".

### 5. SCHEDULE OF RACES

Saturday March 8

900-930	Check in
930	Skippers Meeting
1030	First possible warning signal
Following racing	Pizza Social at CCSC

Sunday March 9

1000	First possible warning signal
1400	Last possible warning Signal
Following Racing	Awards

### 6. Format Qualifying Series

6.1 The regatta will be a supplied boat

6.2 The regatta will be divided into a round robin qualifying series and a final series.

6.3 For the qualifying series sailors will be divided into four(4) divisions of four(4) boats each. Divisions will be labeled with the colors blue, yellow, pink, and green.

6.4 Each “race” will consist of two divisions sailing against each other. Race committee intends to run two back to back races between the same divisions before sending the fleet ashore to give the boats to the next two division

6.5 During the qualifying series the fleet will race in “sets” of races. For the purpose of the SI, a “race” is between two divisions and a “set” is four(4) races scored in witch all divisions compete. The race committee will endeavor to run complete “sets” of races, and at its discretion may abandon incomplete “sets”.

6.6 See appendix 2 for qualifying series round robin schedule.

6.7 Rotating Boats will occur as follows. All sailors will be assigned a starting boat based on seeding. Green and Blue division sailors will rotate into the next lowest boat number (boat 8 rotates into boat 7 etc). Yellow and Pink divisions will rotate into the next highest boat number (boat 1 rotates into boat 2 etc). This rotation system will be used for the entirety of the qualifying series.

6.8 The qualifying series can end at the discretion of the race committee. The intention is to run 12 races or to allow for each division to sail each other.

## **7. Format Final Series and medal race**

7.1 At the end of the qualifying series the feet will be divided into gold and silver fleet. The top 8 will be assigned to gold fleet and the bottom 8 will be assigned to silver fleet.

7.2 Gold fleet and silver fleet will alternate sailing two races each. Silver fleet will sail first.

7.3 Silver and gold fleets do not need to have the same amount of races.

7.4 The last race for each fleet will be a double points ‘medal race’ where race scores will count double. 1st will receive 2 points, 2nd will receive 4 points and so on. Sailors will be verbally notified by the race committee before the sequence of the ‘medal race’ .

7.5 Sailors will rotate up into the next highest boat after each. Boats will be assigned at the start of the final series based on your position in the results at the end of qualifying series. For example: Boat 1 will be assigned to the sailor in 1st after the end of the qualifying series. Boat 2 will be assigned to the sailor in 2nd and so on. Silver fleet assignments will be similar with boat 1 assigned to the 9th place sailor and boat 2 assigned to the 10th place sailor after the qualifying series and so on.

## **8. RACING AREA**

All racing will be held in Clearwater Harbor. Details provided at the skippers meeting.

## **9. The Course And Change Of The Next Leg Of the Course**

9.1 SI appendix A illustrates the course, including the general configuration of the marks, the order in which marks are to be passed, and the side on which each mark is to be left. The course length and exact configuration will be based on sailing conditions.

9.2 To change the next leg of the course the, the race committee will move the original mark (or the finishing line) to a new position.

## **10. Marks**

10.1 Rounding marks 1,2,3 will be orange Tetrahedrons.

10.2 The starting pin will be a skinny yellow ball.

## **11. The Finish**

The finish line will be between the staff of an orange flag of the signal boat and a yellow cylinder/ orange sphere to leeward of the signal boat.

**12. Time Limits**

12.1 The time limit for the first boat in a race to sail the course and finish is thirty (30) minutes.

12.2 Boats failing to finish within twenty (10) minutes after the first boat in a race sails the course and finishes will be scored Did Not Finish without a hearing or scored in place.

12.3 Target time for each race will be fifteen minutes(15).

**13. The Start**

13.1 Races will be started using the following signals:

Minutes Before Starting signal	Visual signal	Sound signal
3	Class flag displayed	3 long
2	P, I, U, or Black flag displayed	2 long
1:30	None	1 long 3 short
1	P, I, U, or Black flag	1 long
:30	None	3 short
:20	None	2 short
:10	None	1 short
:5	None	5 short
0	Class Flag removed	1 long

13.2 The starting line will be between a staff displaying an orange starting line flag flown from the signal boat on the starboard end and a skinny yellow cylinder at the port end.

13.3 Race committee will attempt to hail the sail numbers of the boats that are OCS or subject to starting penalties. Failure to hail will not be grounds for protest.

**14. Protests, Scoring Reviews, Redress Requests, and Penalties.**

14.1 Protest and scoring review forms are available at front desk of the CCSC.

14.2 The protest time limit is 45 minutes after the race committee signal vessel docks. The protest time limit will be posted on the official notice board as soon as practical.

**15. Scoring**

15.1 No races will be dropped from a competitors score.

15.2 The “Medal race” will be scored as double points as outlined in SI 7.3.

15.3 All silver fleet sailors will be scored behind gold fleet sailors in the overall regatta results.

**16. Safety**

16.1 Support vessels shall monitor VHF channel 68.

16.2 All competitors shall wear a USCG approved type III PDF while racing.

**17. Risk Statement**

17.1 Competitors and support teams participate in the regatta entirely at their own risk and they are reminded of the provisions of RRS 3, Decision to Race: 'The responsibility for a boat's decision to participate in a race or to continue to race is hers alone.'

17.2 By taking part in the event, each competitor agrees and acknowledges that: Sailing is a potentially dangerous activity with inherent risks. These risks include strong winds and rough seas, sudden changes in weather, failure of equipment, boat handling errors, poor seamanship of other boats, loss of balance on an unstable platform and fatigue resulting in increased risk of injury. Inherent in the sport of sailing is the risk of permanent, catastrophic injury or death by drowning, trauma, hypothermia, or other causes.

**18. Organizing authority supplied boats**

Competitors will not be permitted to change any shroud settings.

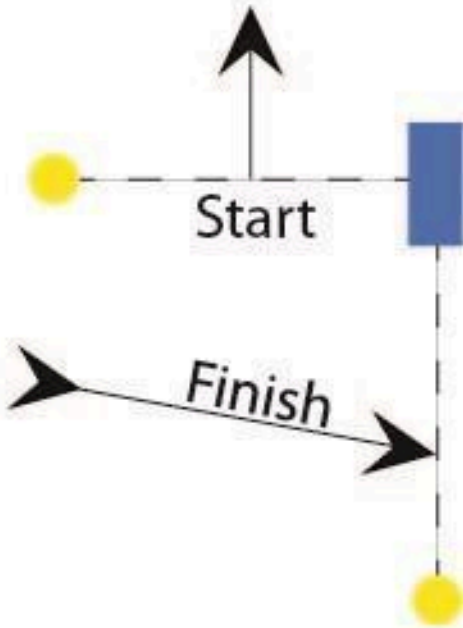
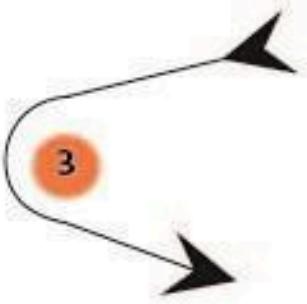
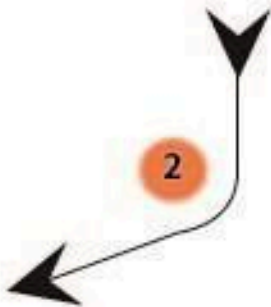
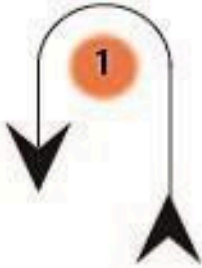
**19. Prizes**

Prizes will be awarded as stated in the notice of race.

Appendix A



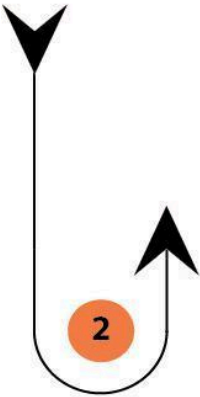
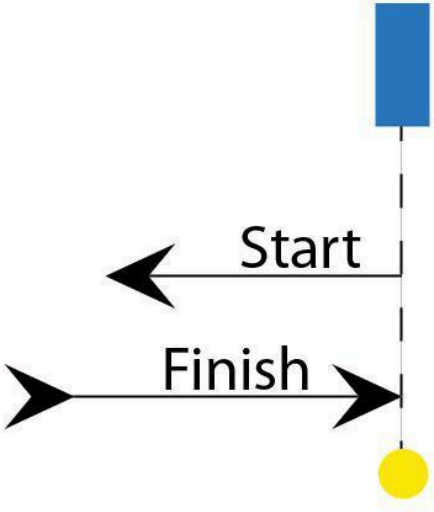
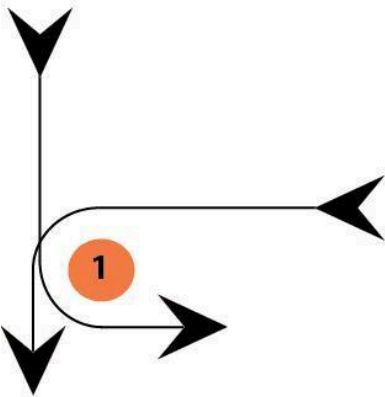
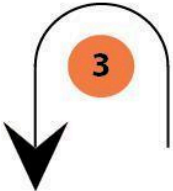
**Course: W1**  
course not to scale  
Mark Rounding Order  
Start - 1P - 2S - 3P - Finish



Appendix A



**Course: GP1**  
course not to scale  
Mark Rounding Order  
Start - 1P - 2P - 3P - 1P - finish



Si Addendum B— Start Rotation - 4 divisions

Set 1

Race 1/2 Green vs Yellow

Race 3/4 Blue vs Pink

Set 2

Race 5/6 Green vs Blue

Race 7/8 Pink vs Yellow

Set 3

Race 9/10 Yellow vs Blue

Race 11/12 Green vs Pink

If more than 12 races are scored during the qualifying round the rotation will repeat.