



# Sailing Instructions

## ALYC 2025 Sundowner Series

### **Mondays May 5 - Aug 25** except May 26

### **Updated Course Chart for 2025**

#### **1. RULES**

- 1.1 The series will be governed by the 2025-2028 Racing Rules of Sailing (*RRS*) and the rules of the fleet in which a boat is racing.
- 1.2 Symmetrical or asymmetrical spinnakers are NOT allowed.
- 1.3 While racing, PHRF and Race Rating boats shall not enter the mooring areas. Moorings are defined as obstructions.

#### **2. CHANGES TO SAILING INSTRUCTIONS**

- 2.1 Any change to the Sailing Instructions (SI's) will be posted before 0900 PDT on the day it will take effect, Except that any change to the schedule of races will be posted by 1000 PDT on the day before it will take effect.
- 2.2 The Race Committee (R/C) may issue verbal changes to the SI' when the "L" flag (Come Within Hail) is displayed.

#### **3. COMMUNICATIONS WITH COMPETITORS**

- 3.1 Notice to competitors will be posted on Regatta Network through ALYC's website.
- 3.2 On the water, the R/C intends to monitor and may communicate with competitors via VHF radio on channel 72.
- 3.3 While racing, except in an emergency, a boat shall not make voice or data transmissions and shall not receive voice or data communication that is not available to all boats.

#### **4. SIGNALS MADE ASHORE**

- 4.1 Signals made ashore will be displayed from the flagpole located at ALYC's Marina.
- 4.2 If a postponement is signaled ashore, the warning signal will be made not less than one hour after flag AP is lowered.

#### **5. SCHEDULE OF RACES**

The scheduled warning signal for the first race each day will be at 1800 PDT.

#### **6. RACING AREA**

- 6.1 The racing area is in Newport Harbor
- 6.2 The start/finish line is in the "5 points area".

## 7. COURSES AND MARKS

7.1 The courses will be designated by numbered pennants (tens digit flying above ones digit) and will be displayed at the warning signal for each class.

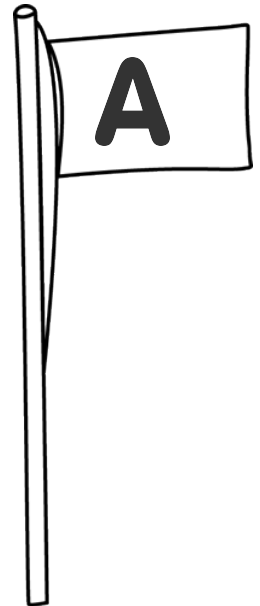
7.2 The Sundowners Series Courses List ([Attachment A 2025](#)) shows the courses, course designations, and the marks in their order to be taken.

7.3 When the numerical pennant “50” is flown, the course for that class will be displayed on a White Board on the Committee Boat.

7.3 All marks shall be rounded to port unless indicated by a small “s” after the mark identification on the Sundowner Series Courses List or White Board.

7.4 An orange tetrahedron mark windward of the start line is designated as “F”.

7.5 A orange tetrahedron mark leeward of the Committee Boat will be displayed on the White Board with the symbol of a black triangle.



## 8. STARTING

8.1 A flag with white with black letters is used to identify a Class for starting.

8.2 Races will be started using *RRS* 26

8.3 The Start line is between an Orange flag on a staff affixed to an anchored float and an orange flag on the R/C boat at the starboard end of the line.

8.4 Approximately one minute before the first warning signal the R/C will sound an attention signal consisting of multiple horns or whistle blasts. Boats whose warning signal has not been made must remain clear of the starting line area.

8.5 The warning signal for each succeeding class shall be made with the starting signal of the preceding class (rolling starts).

## 9. FINISHING

9.1 The Finish line is between an Orange flag on a staff affixed to an anchored float and a Blue flag on the R/C boat at the port end of the line.

9.2 A boat that withdraws, retires or abandons a race must notify the R/C.

## 10. PENALTY SYSTEM

*RRS* 44.1 is changed to a one-turn penalty

## 11. PROTEST

11.1 Any boat protesting **MUST** continue to fly the protest flag when crossing the finish line and indicate to the R/C what boat they are protesting, this modifies *RRS* 61.

11.2 Protest forms will be available through the R/C office or Regatta Network

11.3 Completed protest forms shall be delivered to the Principle Race Officer (PRO) within the protest time limit.

11.4 The protest time limit is 30 minutes after the committee boat arrives at the dock.

11.5 The parties will be advised under *RRS* 63.2 of when and where the protest will be heard, which may be on a date and time other than immediately following the close of the Protest Time Limit.

## **12. TIME LIMITS**

The time limit for a boat is 30 minute after the first boat in its class finishes. Any boat finishing after that time will be scored DNF. This changes *RRS* 35

## **13. SCORING**

13.1 The first half (races 1-8) and second half (races 9-16) will be scored separately.

13.2 First and second half scores (races 1-16) will be combined for the Series Score.

13.3 Boats with a PHRF Rating will be scored based on the boat's Area D RLC Rating PLUS its Non-Spinnaker Offset.

13.4 Boats without a PHRF Rating will be assigned a "Race Rating" by the R/C, and will be scored using that rating.

13.5 Harbor 20 and J22 will be scored according to their finishing position.

13.6 Scoring will be in accordance with *RSS* A4.

13.7 The skipper must notify the R/C that they have retired as soon as possible.

13.8 Boats that do not start, sail the course, finish or retire or were disqualified shall be scored ONE (1) more than the number of starters. This changes *RRS* A5.2

## **14. PRIZES**

14.1 Daily prizes will be awarded after each day of racing.

14.2 The 1st-half prizes will be awarded after Race #8.

14.3 The 2nd-half prizes and the Overall Series will be awarded after Race #16.

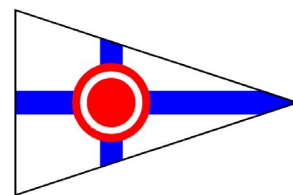
## **15. RISK STATEMENT**

Competitors participate in this series entirely at their own risk (see Rule 3 - Decision to Race).

The organizing authority does not accept any liability for material damage or personal injury or death sustained in conjunction with or prior to, during or after the series.



# ALYC 2025 Sundowner Series Course list



- |    |                     |    |                    |
|----|---------------------|----|--------------------|
| 12 | F Q X F Fin         | 27 | F N Q T Fin        |
| 13 | F K Q X F Fin       | 28 | F N Q U Fin        |
| 14 | F N X F Fin         | 29 | F Q U Q X F Fin    |
| 15 | F Q Z F Fin         | 30 | F 11 Q T Q Y F Fin |
| 16 | F P 11 T 11 X F Fin | 31 | F N Q T Q X F Fin  |
| 17 | F N Y F Fin         | 32 | F Q T Q Y F Fin    |
| 18 | F N 11 U 11 X F Fin | 33 | F K Q U Fin        |
| 19 | F 8 Y F Fin         | 34 | F Q U Q Y F Fin    |
| 20 | F 8 11 T Q X F Fin  | 35 | F 8 Q U X F Fin    |
| 21 | F P 11 U 11 X F Fin | 36 | F N Q U Q X F Fin  |
| 22 | F Q T Q T Fin       | 37 | F N 8 M T F Fin    |
| 23 | F Q T Q U Fin       | 38 | F N 8 M Y F Fin    |
| 24 | F Q U Q U Fin       | 39 | F P X F Fin        |
| 25 | F P Q T Fin         | 40 | F P N T Fin        |
| 26 | F 11 Q T Q X F Fin  | 50 | WHITE BOARD TBD    |



0



1



2



3



4



5



6



7

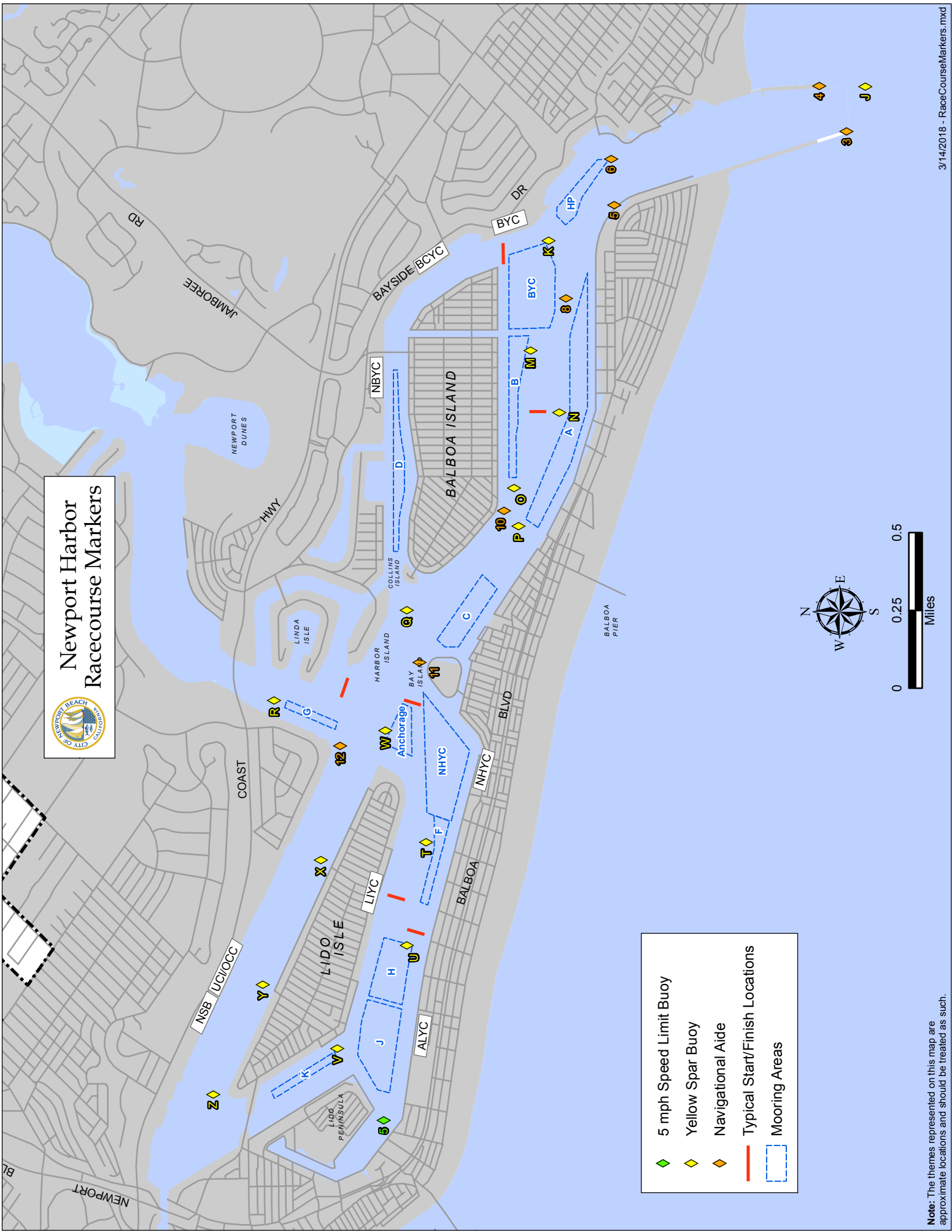


8

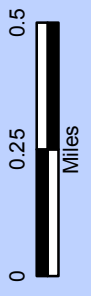


9

# Newport Harbor Racecourse Markers



- ◆ 5 mph Speed Limit Buoy
- ◆ Yellow Spar Buoy
- ◆ Navigational Aide
- Typical Start/Finish Locations
- Mooring Areas



Note: The themes represented on this map are approximate locations and should be treated as such.