



2013 Cowford Cup
The Florida Yacht Club
Jacksonville, Florida
April 13-14, 2013



SAILING INSTRUCTIONS

1 RULES

The regatta will be governed by the rules as defined in the *Racing Rules of Sailing, 2013-2016*.

2 ENTRIES

2.1 This event is open to all competitors who meet the eligibility requirements as stated in the Notice of Race and who have filed valid entries in accordance with the Notice of Race. Competitors may enter by delivering a completed entry form and paying the entry fee specified in the Notice of Race.

2.2 Entry forms must be completed by the competitor's designated adult representative. The decision to sail or to compete in any race will be the sole responsibility of the competitor's designated adult representative and competitor's designated adult representative accepts full responsibility for all actions of the competitor during any activity related to this event.

3 NOTICES TO COMPETITORS

Notices to competitors will be posted on the official notice board located adjacent to the Fleet Center Patio.

4 CHANGES TO SAILING INSTRUCTIONS

Changes to the Sailing Instructions will be posted before 0830 on the day it will take effect.

5 SIGNALS MADE ASHORE

5.1 Signals made ashore will be displayed from the flagpole located on the main lawn of the yacht club.

5.2 If a postponement is signaled ashore, the warning signal will be made not less than 45-minutes after AP is lowered.

6 SCHEDULE (all events take place at the Fleet Center unless noted otherwise):

6.1 Saturday, Apr. 13

Registration (in FYC main office)	0930 – 1200
Lunch available	1100
Competitor's meeting (at Fleet Center patio)	1200

Warning signal for first race 1300 (back to back races to follow)

6.2 Sunday, Apr. 14

Breakfast (at Fleet Center patio)	0800
Warning signal for first race	0930 (back to back races to follow)
Last warning signal	No later than 1300

6.3 Subsequent races will be held as soon as possible after the end of the previous race.

7 CLASS FLAGS

Class flags will be posted during the competitor's meetings.

8 RACING AREA

The racing area will be upon the St. Johns River. The location of each course will be described in the competitor's meeting.

9 COURSES & MARKS

9.1 The attached diagrams show the courses, the course designations, the marks in order, and the rounding direction of each mark.

9.2 All marks will be yellow inflatable marks. (Snipes, 420's and Lasers are using orange marks)

9.3 New marks when used in accordance with RRS 33, Changing the Course After the Start, will be different from the original marks.

10 STARTS

10.1 Prior to the first race of each day, competitors shall check in by sailing on starboard tack past the stern of the signal boat and hailing their sail number.

10.2 The starting line will be between the staff displaying the orange flag on the RC signal boat and the nearby orange starting buoy. Boats not *racing* shall stay clear of the starting line.

10.3 Races will be started in accordance with RRS 26. Boats who fail to start 3-minutes after their starting signal will be scored DNS.

10.4 The RC may hail premature starters. Failure of the RC to hail a premature starter or a competitor's failure to hear such a hail shall not be grounds for redress; the skipper is solely responsible for starting in accordance with the RRS.

11 FINISHING

The finishing lines will be between the staff displaying the orange flag on the RC signal boat and the nearby orange finishing buoy. Boats shall not sail through the finish line unless they are finishing.

12 TIME LIMIT

12.1 The time limit for each race will be 60-minutes for the first boat to finish.

12.2 Boats still racing still racing more than 20 minutes after the first boats sails the course and finishes will be scored TLE and will receive two more points than the last finisher, but not more than DNF. This changes Rule 35, 63.1, A4, A5 and adds to A11.If boats are delaying the start of the next race the RC may terminate the race and score those boats in the place they would have finished.

13 PROTESTS

13.1 Competitors intending to protest must inform the RC immediately after finishing the race to be protested and before communicating with coaches, parents, or spectators. Written protests shall be delivered to protest committee within 60 minutes of the RC signal boat docking.

13.2 A list of protests received will be posted on the notice board within 30-minutes after the protest time has expired. Hearings will be held as soon as possible after racing each day in the club's ground floor regatta room or as determined by the protest committee.

14 SCORING

14.1 The Low Point System of Appendix A of the racing rules will apply. When fewer than 6 races have been completed, a boat's series score will be the total of her race scores. This changes RRS A2.

14.2 One completed race will constitute a regatta.

15 ENVIRONMENTAL AND SAFETY

15.1 Competitors shall not discharge trash into the water. Any competitor who throws trash into the water is subject to disqualification. Such disqualification will be posted on the official notice board and any competitor so disqualified may request a hearing.

15.2 A boat retiring from a race shall notify a RC vessel before leaving the course if possible; otherwise a boat retiring from a race shall notify the Main Office immediately after arrival ashore.

15.3 Support, spectator, and coach boats shall stay well clear of the course while any race is in progress unless rendering assistance to competitor's in danger. If a competitor receives such assistance they shall retire. After the finish, coach, parent and support boats shall not communicate with competitors until they are well clear of the finish area. No wake is permitted within 500 yards of the race course while boats are racing. Violation of any of this part may result in a penalty up to and including disqualification of the competitor or competitors associated with the craft violating this instruction this instruction for the race in which the violation occurs.

16 TROPHIES

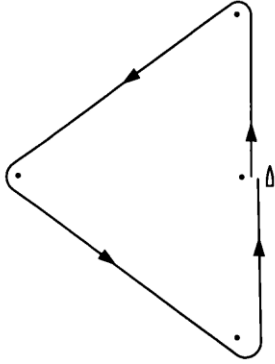
Trophies will be awarded to the top three finishers in each division. There will be an award for the top overall finisher in the combined Optimist Red, White, and Blue Fleets. Champions in each division will have their names engraved on the perpetual trophy. Participation awards will be given to all Opti Green Fleet sailors.

17 SPONSORS

Special thanks to Lamb's Yacht Center for donating Friday's dinner, Subway for providing Saturday lunch and Bagel Love of Avondale for donating Sunday's breakfast.

OPTI CLASSES COURSE OPTIONS

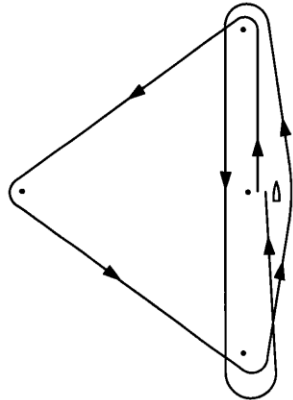
GREEN FLEET COURSE



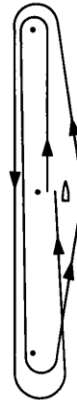
ALL MARKS TO PORT. TRIANGLE WITH START/FINISH IN THE MIDDLE OF THE WEATHER LEG.

RED, BLUE AND WHITE FLEET COURSES

COURSE "T"



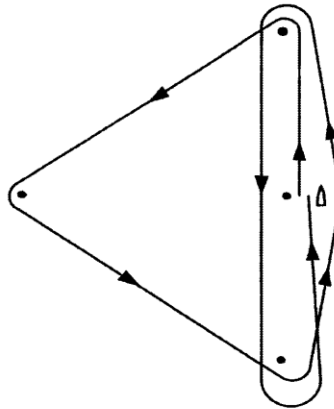
COURSE "W"



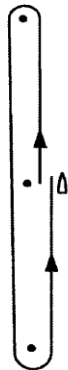
ALL MARKS TO PORT. THE START/FINISH LINE IS BETWEEN THE WINDWARD MARK AND THE LEEWARD MARK AND IS A RESTRICTED AREA UNLESS YOU ARE STARTING OR FINISHING (THE GATE IS CLOSED). ANYONE CROSSING THE START/FINISH LINE IMPROPERLY MAY BE DISQUALIFIED.

LASER, 420, COURSE OPTIONS

COURSE "T"



COURSE "W1"



COURSE "W2"



ALL MARKS TO PORT. THE START/FINISH LINE IS BETWEEN THE WINDWARD MARK AND THE LEEWARD MARK AND IS A RESTRICTED AREA UNLESS YOU ARE STARTING OR FINISHING (THE GATE IS CLOSED). ANYONE CROSSING THE START/FINISH LINE IMPROPERLY MAY BE DISQUALIFIED.